

Haojue

PARTS CATALOGUE

EH150

PREFACE

This catalogue lists the spare parts used for the following model. Please do refer to the parts catalogue and indicate the parts number and the name listed in this catalogue correctly when you need to replace the spare parts.

Design Code	Factory Reference No. (Abbr. form in the catalogue)	Engine Reference No.	Engine Cad No.
EH150	FA173LU12N-XXE05	EG3LU07-E05	10091H3L011H000

一、 How to place an order for spare parts?

1. Required document:

The number must be provided as follow when order the spare parts:

- (a) The Engine parts: parts number and the Engine number
- (b) The Body parts: parts number and the Frame number

2. Revision

The Revised Version would be published at a suitable time when the parts Catalogue needed to be revised or renewed. In this case, the edition number would be marked on the cover. The parts would have some difference because our products are improved continuously and the modified parts no. will not be informed before the new edition published.

二、 How to use the parts catalogue?

1. Size

The unit of the parts' size indicated in the catalogue is 'mm', for example:

Parts name	Description
Bolt 6×12	Diameter 6mm, Length 12mm

O Ring D: 3.0, ID: 29.5	Section diameter 3mm, inner diameter 29.5mm
Bearing 35×72×17	Inner diameter 35mm, Outer diameter 72mm, Thickness 17mm

2. Abbr.

The meaning of the Abbreviations in the catalogue are as the followings:

D: Section diameter NT: Number of Teeth L: Length ID: Inner diameter W: Width

OPT: Optional T: Thickness OD: Outer diameter OS: Over size

STD: Standard US: Under size LH: Left hand side RH: Right hand side

3. Assy and the inner parts

The part number with a hyphen '-' in the front means this part could be supplied with the Assy (or the comp.), also could be supplied separately.

For example:

Item 1 CYLINDER HEAD ASSY

Item1-1 PIN,CAMSHAFT COVER

That means Item1-1 can be supplied with Item 1 and aslo can be supplied separately.

4. The illustrations in the catalogue are just for the purpose to distinguish the parts. There might be some discrepancies between the illustrations and the real parts.. Furthermore, the illustrations can not be used for the assembling purpose. When assembling, pls use the Service Manual of the relative models.

5. The instruction for the color parts

The catalogue lists are being supervised by color code.

For example: Assy,Fuel Tank 44100H22000HF01 F01 is the colour code and means "RED".

When place an order for the color parts, please use the correct parts number (with the color code), based on the compound color sheet of the models.

This catalogue is edited according to the datas before 2020-12-30. The modification after that time should refer to the latest SPS(Spare Parts Modification notice).

EH150 COLOR TABLE FA173LU12N-XXE05 3 COLOR STYLES

REF. NO.	DESCRIPTION	PART NO.	a01 RED	a02 BLUE	a03 BLACK	REMARKS
1	FUEL TANK SET	44011H17302H000	F01	F02	F03	
2	LOGO	68170H2E220H000	T99	T99	T99	NOT SUPPLY
3	BODY, COWLING	94411H17100H000	104	608	541	
4	TAPE, COVER SIDE, L	68136H17100H000	TA1	TA1	TA1	
5	TAPE, FRAME COVER, R	68135H17100H000	TA1	TA1	TA1	
6	WHEEL COMP, FRONT	54110H11A10H000	801	801	801	
7	WHEEL COMP, REAR	64150H11A10H000	801	801	801	

INFORMATION ILLUSTRATION INDEX

1

ENGINE & TRANSMISSION

2

ELECTRICAL

3

BODY

4

PARTS NUMBER INDEX

5

Fig. 1 CYLINDER HEAD&CYLINDER HEAD COVER (P05-S010-0052)

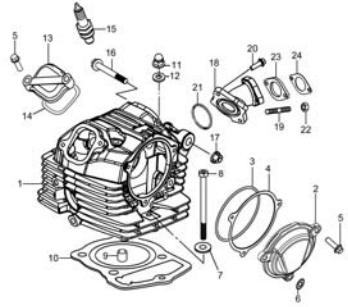


Fig. 2 CYLINDER (P05-S020-0025)

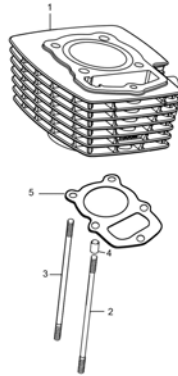


Fig. 3 CRANKCASE (P05-S030-0034)

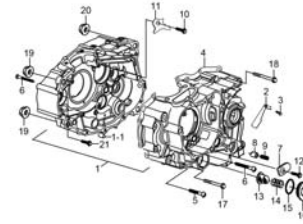


Fig. 4 CRANKCASE COVER (P05-S040-0048)

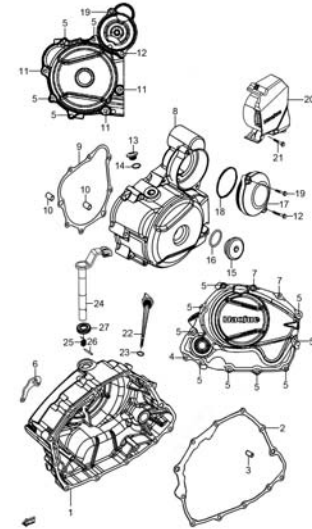


Fig. 5 CRANKSHAFT (P05-S050-0046)

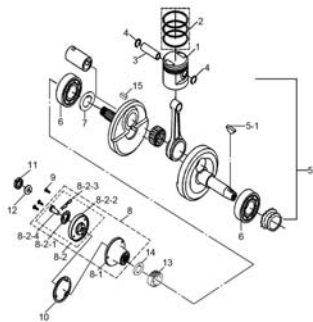


Fig. 6 STARTER CLUTCH (P05-S060-0007)

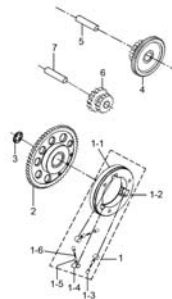


Fig. 7 CAMSHAFT-VALVE (P05-S070-0007)

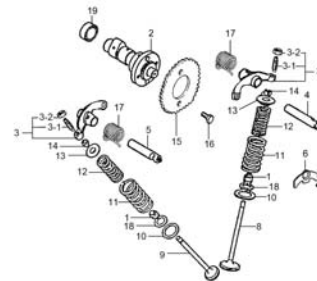


Fig. 8 CAM CHAIN (P05-S080-0019)

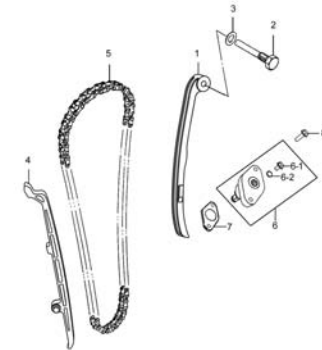


Fig. 9 CARBURETOR (P05-S090-0051)

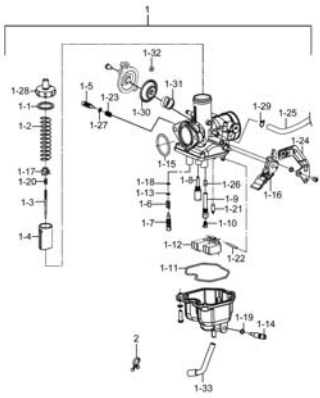


Fig. 10 AIR CLEANER (P05-S100-0027)

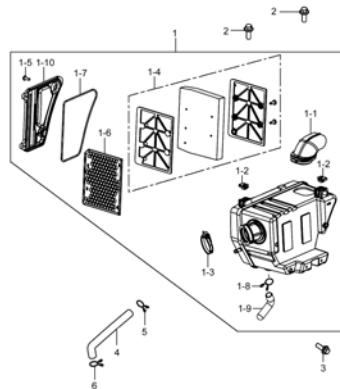


Fig. 11 MUFFLER (P05-S110-0052)

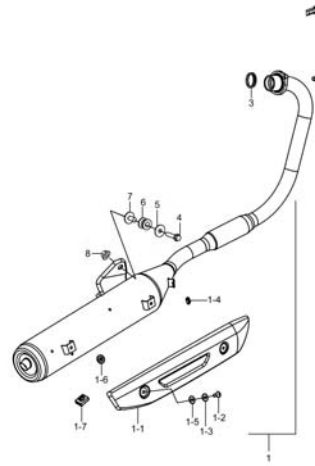


Fig. 12 OIL PUMP (P05-S130-0004)

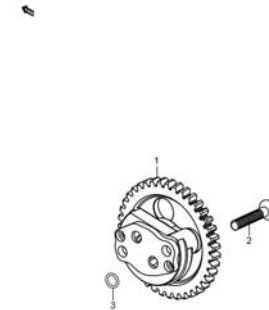


Fig. 13 CLUTCH (P05-S140-0023)

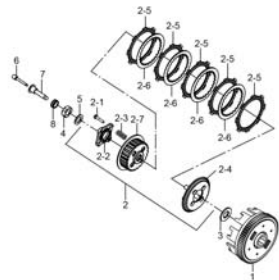


Fig. 14 TRANSMISSION (P05-S150-0037)

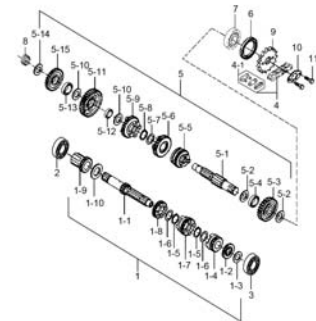


Fig. 15 GEAR SHIFTING (P05-S160-0024)

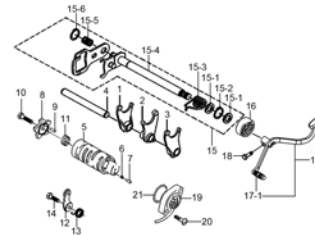


Fig. 16 KICK STARTER (P05-S165-0004)

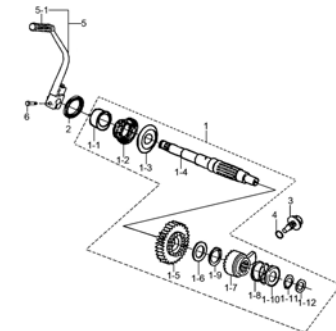


Fig. 17 STARTING MOTOR (P05-S170-0022)

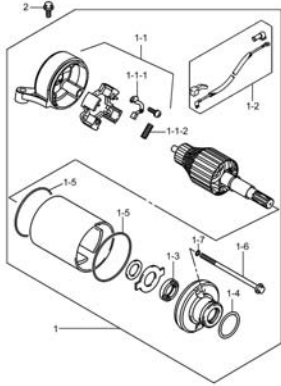


Fig. 18 MAGNETO (P05-S180-0017)

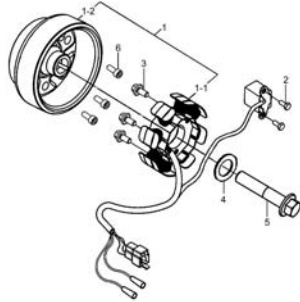


Fig. 19 BATTERY (P05-S190-0032)

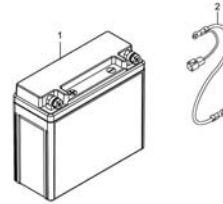


Fig. 20 ELECTRICAL (P05-S200-0048)

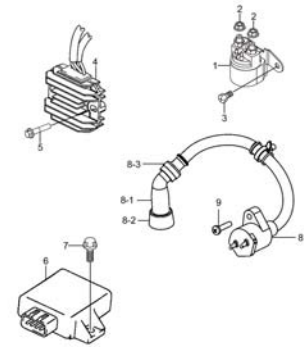


Fig. 21 SPEEDOMETER (P05-S210-0044)

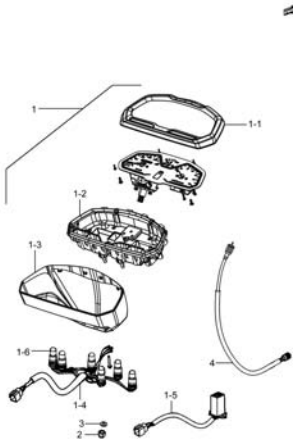


Fig. 22 HEADLAMP (P05-S220-0037)

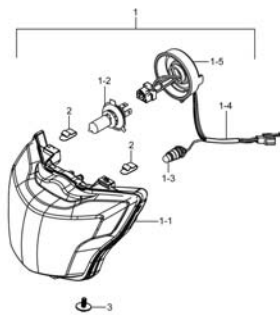


Fig. 23 TURN SIGNAL LAMP (P05-S230-0034)

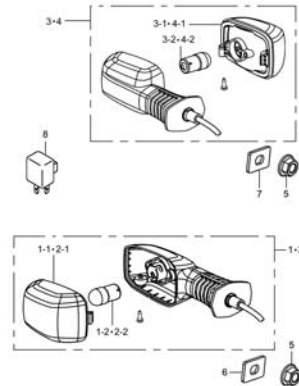


Fig. 24 REAR COMBINATION LAMP (P05-S240-0032)

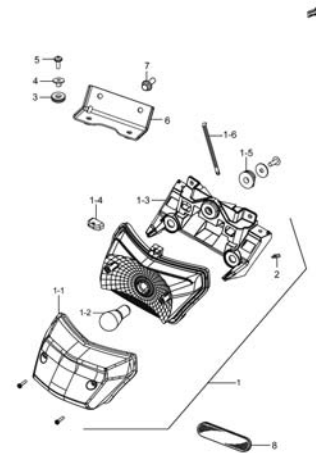


Fig. 25 WIRING HARNESS (P05-S250-0052)

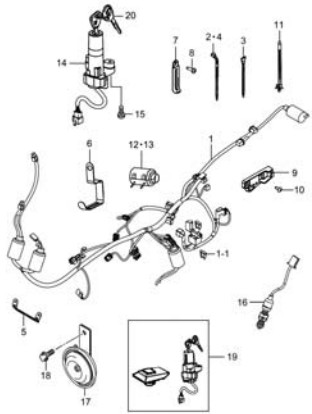


Fig. 26 FRAME (P05-S260-0082)

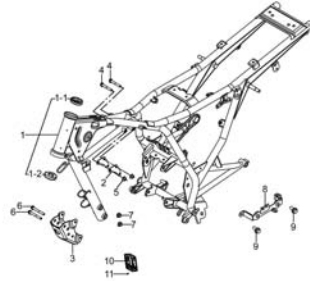


Fig. 27 STAND (P05-S270-0035)

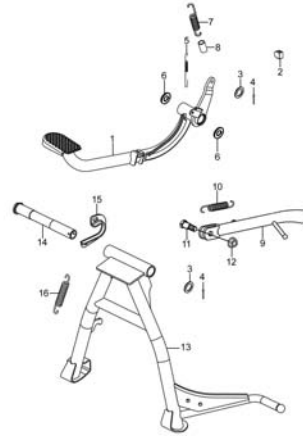


Fig. 28 FOOTREST (P05-S280-0052)

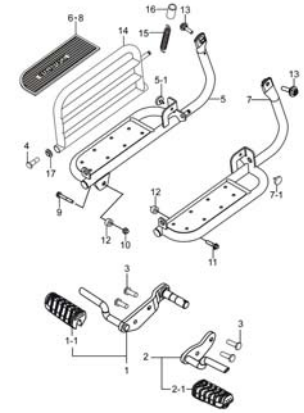


Fig. 29 FUEL TANK (P05-S290-0053)

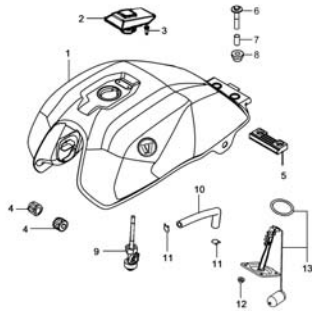


Fig. 30 FRAME COVER (P05-S310-0055)

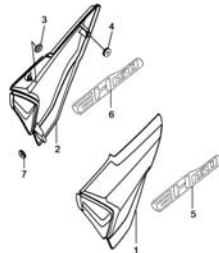


Fig. 31 FRONT FENDER (P05-S320-0029)

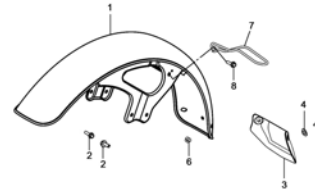


Fig. 32 HANDLEBAR (P05-S330-0069)

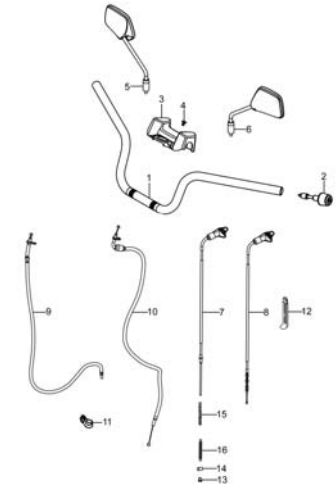


Fig. 33 HANDLE SWITCH (P05-S340-0052)

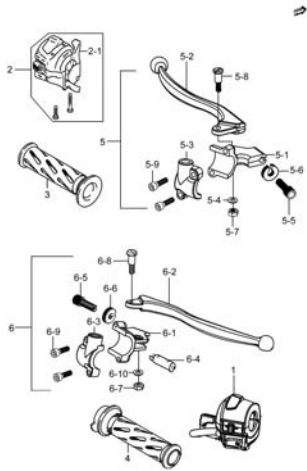


Fig. 34 REAR FENDER (P05-S350-0039)

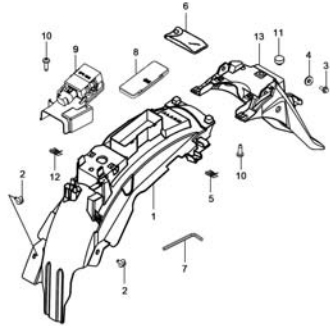


Fig. 35 COWLING (P05-S360-0030)

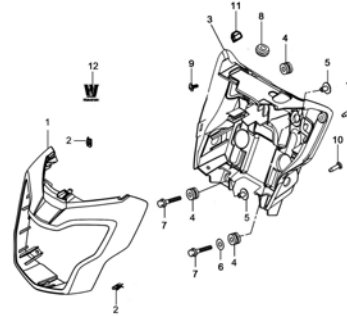


Fig. 36 LABEL (P05-S370-0073)

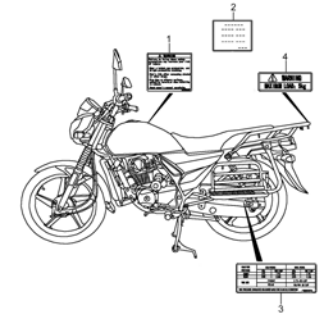


Fig. 37 SEAT (P05-S380-0026)

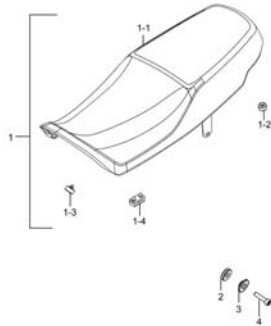


Fig. 38 COVER, SEAT TAIL (P05-S390-0046)

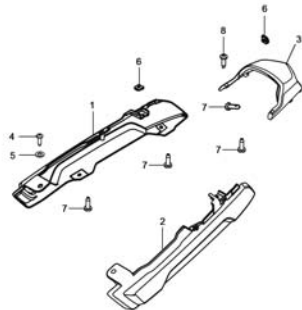


Fig. 39 STEERING STEM (P05-S400-0052)

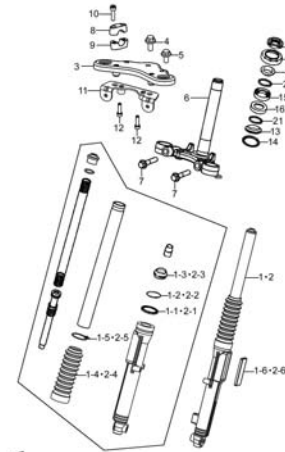
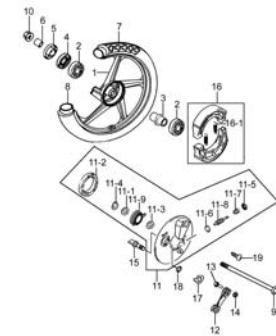


Fig. 40 FRONT WHEEL (P05-S410-0043)



1

Fig. 41 REAR SWINGING ARM
(P05-S440-0025)

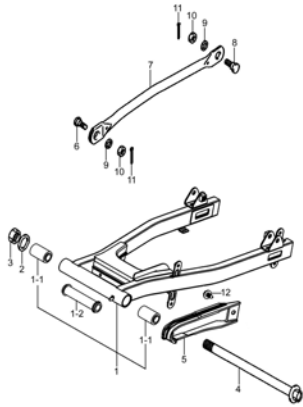


Fig. 42 REARSHOCK ABSORBER
(P05-S450-0026)

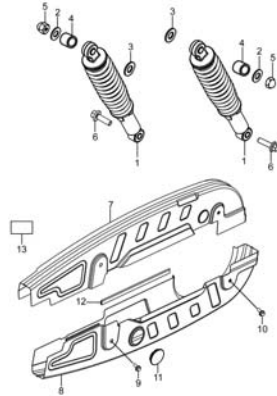


Fig. 43 REAR WHEEL (P05-S460-0075)

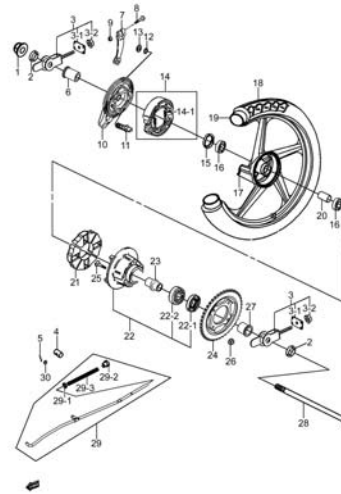


Fig. 44 BUMPER COMP (P05-S470-0013)

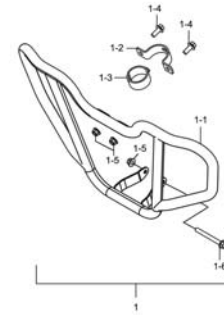


Fig. 45 CARRIER (P05-S480-0031)

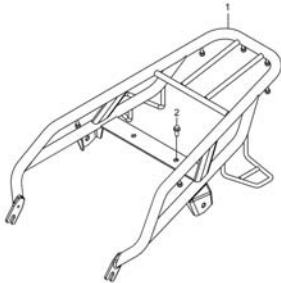


Fig.1

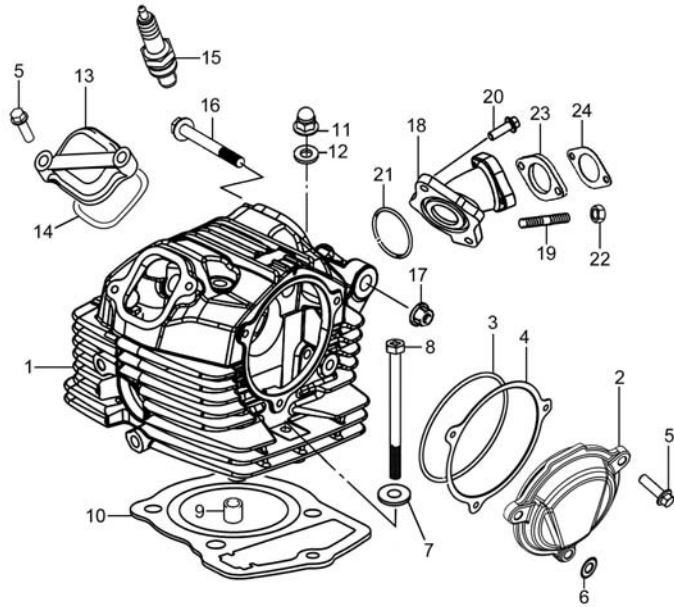


Fig.1 CYLINDER HEAD&CYLINDER HEAD COVER (P05-S010-0052)

REF. No.	PART No.	DESCRIPTION	Q'TY	REMARKS
1	11110H3E0B0H000	HEAD COMP, CYLINDER	1	
2	11121H2F000H000	COVER, CYLINDER HEAD, L	1	
3	09280H75001H000	O-RING	1	
4	11123H3F000H000	WASHER, CYL HEAD COVER, L	1	
5	01547-0620A-000	BOLT	7	
6	09168-06023-000	GASKET, CSHAFT COVER R SCREW	1	
7	11167H12000H000	WASHER, PLAIN (COPPER)	1	
8	09128H06006H000	BOLT, HEX WITH CROSS RECESS	1	
9	09206H10008H000	PIN	2	
10	11141H3F000H000	GASKET, CYLINDER HEAD	1	
11	11165H35010H000	NUT, TECTIFORM	4	
12	09160H08003H000	WASHER	4	
13	11175H3F000H000	CAP, INSPECTION	2	
14	09280H50003H000	O-RING	2	
15	09482H00002H000	PLUG, SPARK	1	
16	09103H08011H000	BOLT	1	
17	08319-3108A-000	NUT	1	
18	13111H17500H000	PIPE, INTAKE	1	
19	09108H06014H000	BOLT, STUD	2	
20	01550-0620A-000	BOLTS, HEXAGON HEAD FLANGE	2	
21	09280H34002H000	O-RING	1	
22	08310-0006A-000	NUT	2	
23	13112H22500H000	PLATE, CARB HEAT GUARD	1	
24	13113H22502H000	GASKET, CARB HEAT GUARD PL	1	

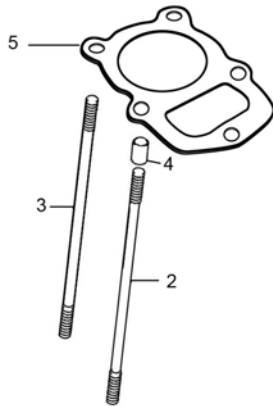
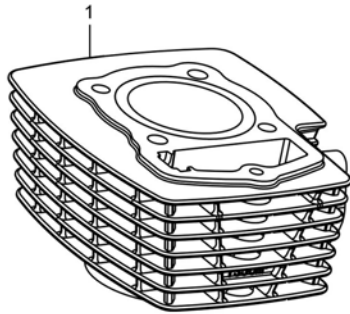
2



Fig. 2

Fig.2 CYLINDER (P05-S020-0025)

REF. No.	PART No.	DESCRIPTION	Q' TY	REMARKS
1	11210H3E030H0B0	CYLINDER COMP	1	
2	11243H35000H000	BOLT, CYL SYUD	2	
3	11244H35000H000	STUD BOLT B, CYLINDER	2	
4	09206H10007H000	PIN, KNOCK	2	
5	11241H36000H000	GASKET, CYLINDER	1	



2



Fig. 3

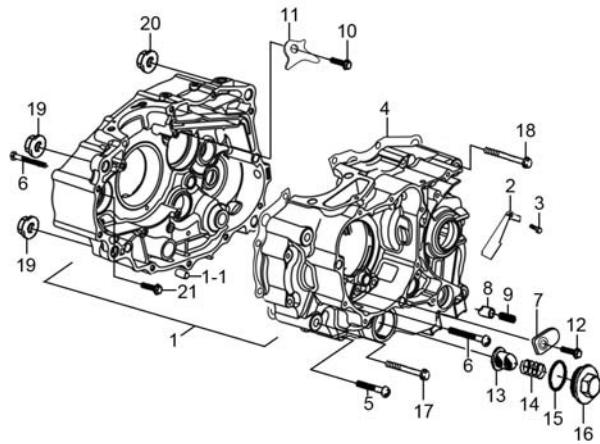


Fig.3 CRANKCASE (P05-S030-0034)

REF. No.	PART No.	DESCRIPTION	Q'TY	REMARKS
1	11300H3FY11H000	CRANKCASE	1	
1-1	09206H10007H000	PIN, KNOCK	2	
2	32115H35000H000	PLATE, WIRE PRESSURE	1	
3	01547-0612A-000	HEXAGON BOLT WITH FLANGE	1	
4	11481H3F000H000	GASKET, CRANKCASE	1	
5	01547-0650A-000	BOLTS, HEXAGON HEAD FLANGE	11	
6	01547-0660A-000	BOLT	4	
7	12545H36010H000	PLATE, BRG PUSH PIN SPRING	1	
8	12543H36010H000	PIN, BRG PUSH	1	
9	09440H07002H000	SPRING, COMPRESSION	1	
10	01547-0614A-000	BOLTS, HEXAGON HEAD FLANGE	1	
11	24741H36000H000	RETAINER, CNTR SHAFT BEARING	1	
12	09100-06026-000	BOLT	1	
13	16520H21D01H000	STRAINER COMP, ENG OIL	1	
14	16541H33001H000	SPRING, ENGINE OIL FILTER	1	
15	09280H35001H000	O-RING	1	
16	16542H36000H000	COVER, FILTER SPRING	1	
17	09103H08010H000	BOLT, HEXAGON	2	
18	09103H10003H000	BOLT, HEXAGON	2	
19	08319-3108A-000	NUT	2	
20	08319-3110A-000	NUT	2	
21	01547-0665A-000	BOLTS, HEXAGON HEAD FLANGE	1	

2



Fig. 4

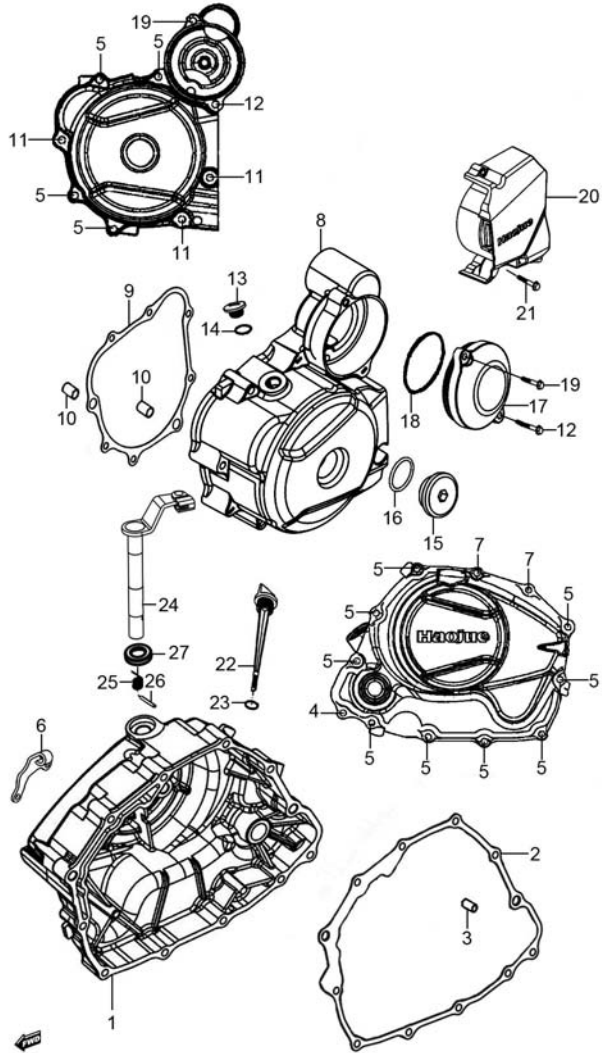


Fig.4 CRANKCASE COVER (P05-S040-0048)

REF. No.	PART No.	DESCRIPTION	Q' TY	REMARKS
1	11340H2F100H000	COVER COMP, CLUTCH	1	
2	11482H35000H000	GASKET, CRANKCASE COVER RH	1	
3	09206H08004H000	PIN, KNOCK	2	
4	01547-0625A-000	BOLT	1	
5	01547-0640A-000	BOLTS, HEXAGON HEAD FLANGE	13	
6	11421H2D000H000	BRACKET, CLUTCH CABLE	1	
7	01547-0645A-000	BOLT	2	
8	11351H2F100H000	COVER, MAGNETO	1	
9	11483H3F000H000	GASKET, MAGNETO COVER	1	
10	09206H10007H000	PIN, KNOCK	2	
11	01547-0650A-000	BOLTS, HEXAGON HEAD FLANGE	3	
12	01547-0670A-000	BOLTS, HEXAGON HEAD FLANGE	1	
13	09247-12104-000	PLUG, TDC	1	
14	09168-12002-000	GASKET, TDC PLUG	1	
15	09259-26023-000	PLUG	1	
16	09280-22008-000	O-RING	1	
17	11441H36031H000	COVER, GEAR CASE	1	
18	09280H63001H000	O-RING	1	
19	01547-0620A-000	BOLT	1	
20	11360H17100H000	COVER COMP, ENG SPROCKET	1	
21	01547-0628A-000	BOLTS, HEXAGON HEAD FLANGE	2	
22	11971H3F000H000	GAUGE, OIL LEVEL	1	
23	09280H18002H000	O RING	1	
24	23270H3J000H000	SHAFT COMP, CLUTCH RELEASE	1	
25	09448H15001H000	SPRING, TORSION	1	
26	09205H03001H000	PIN, SPRING	1	
27	23285H35000H000	SEAL, RELEASE POLE	1	

Fig. 5

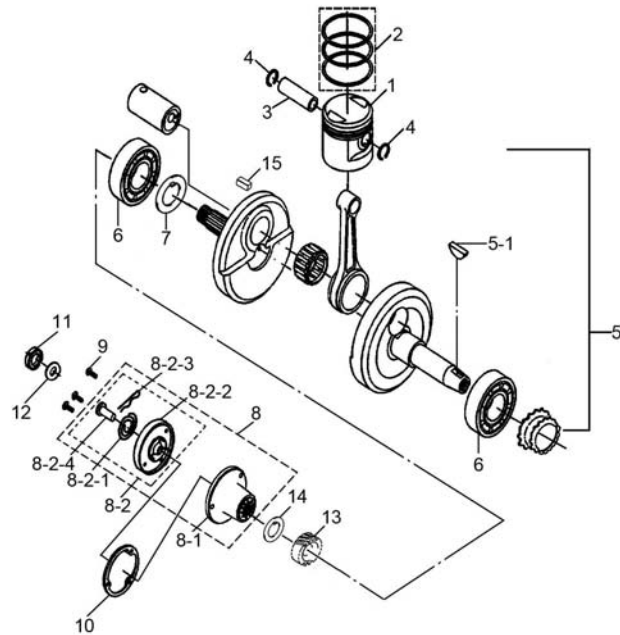


Fig.5 CRANKSHAFT (P05-S050-0046)

REF. No.	PART No.	DESCRIPTION	Q'TY	REMARKS
1	12111H3E010H0B0	PISTON	1	
2	12140H3E030H000	RING SET, PISTON	1	
3	12151H3E000H000	PIN, PISTON	1	
4	09381H14001H000	RING, SNAP	2	
5	12200H3F030H000	CRANKSHAFT ASSY	1	
5-1	09420H04002H000	KEY	1	
6	09262H35005H000	BEARING	2	
7	09181-35108-000	SHIM, CRANKSHAFT ASSY	1	
8	16052H3D000H000	FILTER SET, ENGINE OIL	1	
8-1	16514H3D000H000	FILTER ROTOR, ENG OIL	1	
8-2	16520H33000H000	COVER ASSY, ENGINE OIL FILTER	1	
8-2-1	16532H33000H000	SPRING	1	
8-2-2	16521H33000H000	ROTOR COVER	1	
8-2-3	16551H33000H000	PIN	1	
8-2-4	16531H33000H000	OIL PIPE	1	
9	02122-0512A-000	CROSS RECESSED HEAD SCREW	3	
10	16561H33000H000	GASKET, ROTOR COVER	1	
11	21346H3E000H000	NUT, LOCK	1	
12	09160H16004H000	WASHER, PLAIN	1	
13	21111H3F010H000	GEAR, PRIMARY DRIVE	1	
14	21113H3F000H000	WASHER, PRIMARY DRIVE GEAR	1	
15	09421H04003H000	KEY	1	

2



Fig. 6

2

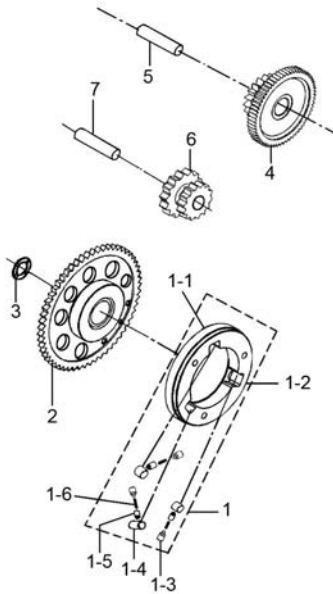
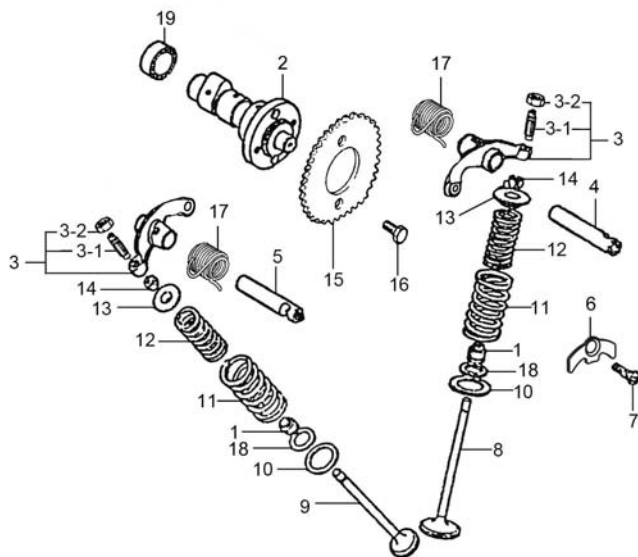


Fig.6 STARTER CLUTCH (P05-S060-0007)

REF. No.	PART No.	DESCRIPTION	Q' TY	REMARKS
1	12630H33001H000	HUB COMP, STARTER CLUTCH	1	
1-1	12642H33000H000	SHIM	1	
1-2	12631H33000H000	HUB STARTER CLUTCH	1	
1-3	12632H33001H000	PLUG, STARTER CLUTCH HUB	3	
1-4	09261H10005H000	ROLLER	3	
1-5	12633H33000H000	PIN	3	
1-6	09440H04013H000	SPRING	3	
2	12620H36001H000	GEAR COMP, STARTER CLUTCH	1	
3	12623H3E020H000	WASHER, STARTER CLUTCH GAER	1	
4	12681H36000H000	GEAR, ELECTRIC STARTER	1	
5	12683H36000H000	SHAFT, GEAR 1ST	1	
6	12651H36000H000	GEAR, STARTER IDLE	1	
7	12691H36000H000	SHAFT, GEAR 2ND	1	

Fig.7

Fig.7 CAMSHAFT-VALVE (P05-S070-0007)



REF. No.	PART No.	DESCRIPTION	Q'TY	REMARKS
1	09283H10002H000	SEAL, OIL	2	
2	12710H3D021H000	CAMSHAFT COMP	1	
3	12840H3D000H000	ARM COMP, VALVE ROCKER	2	
3-1	12842H3D000H000	SCREW, TAPPET ADJUSTING	1	
3-2	12852H33000H000	NUT	1	
4	12861H3D000H000	SHAFT, VALVE ROCKER ARM INTAKE	1	
5	12871H3D000H000	SHAFT, VALVE ROCKER ARM, EXH	1	
6	12862H35022H000	RETAINER, ROCKER ARM SHAFT	1	
7	02122-0616A-000	SCREW	1	
8	12911H3E002H000	VALVE, INTAKE	1	
9	12912H3E002H000	VALVE, EXHAUST	1	
10	09181H17001H000	SHIM	2	
11	12922H3F000H000	SPRING, VALVE OUTER	2	
12	12921H3F000H000	SPRING, VALVE INNER	2	
13	12931H3E000H000	RETAINER VALVE SPRING	2	
14	12932H50100H000	COTTER VALVE	4	
15	12741H35010H000	SPROCKET, CAMSHAFT	1	
16	09100H06003H000	BOLT, HEXAGON	2	
17	09448H22001H000	SPRING, TORSION	2	
18	09181H12003H000	SHIM	2	
19	08140-60030-000	BALL BEARING	1	

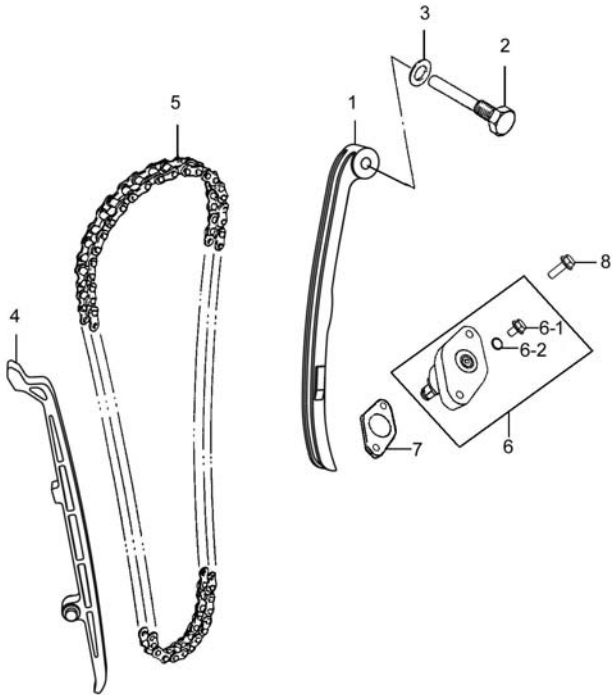
2



Fig. 8

Fig.8 CAM CHAIN (P05-S080-0019)

REF. No.	PART No.	DESCRIPTION	Q' TY	REMARKS
1	12811H3F000H000	TENSIONER, CAM CHAIN	1	
2	09135H08004H000	BOLT	1	
3	09160H08011H000	WASHER	1	
4	12771H35000H000	GUIDE, CAM CHAIN	1	
5	12760H35020H000	CHAIN COMP, CAMSHAFT DRIVE	1	
6	12830H36Y00H000	ADJUSTER SET, TENSIONER	1	
6-1	09128H06010H000	BOLT, HEX WITH CROSS RECESS	1	
6-2	11142H35000H000	O RING	1	
7	12837H35000H000	GASKET, TENSIONER ADJUSTER	1	
8	01547-0620A-000	BOLT	2	



2

Fig.9

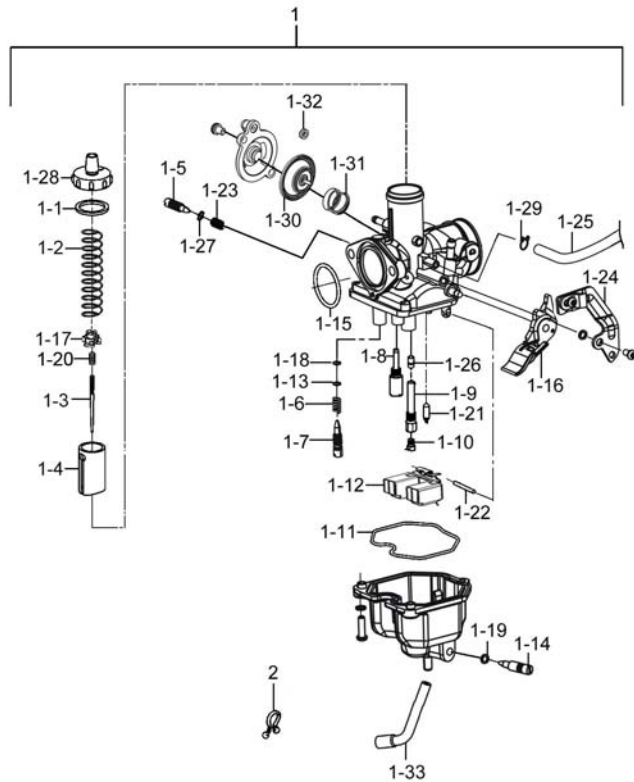


Fig.9 CARBURETOR (P05-S090-0051)

REF. No.	PART No.	DESCRIPTION	Q' TY	REMARKS
1	13200H17510H000	CARBURETOR ASSY	1	
1-1	13255H11200H000	TOP GASKET	1	
1-2	13573H12700H000	COMPRESSION SPRING	1	
1-3	13383H17510H000	JET NEEDLE	1	
1-4	13551H2C010H000	VALVE, PISTON	1	
1-5	13267H2D030H000	ADJUSTER	1	
1-6	13268H33000H000	SPRING COMPR	1	
1-7	13279H36900H000	ADJUSTER	1	
1-8	13351H2D030H000	JET, PILOT	1	
1-9	13385H17510H000	JET HOLDER	1	
1-10	09491H11200H000	JET, MAIN	1	
1-11	13251H11A10H000	GASKET	1	
1-12	13252H33000H000	FLOAT COMP	1	
1-13	13262H11200H000	WASHER	1	
1-14	13247H33000H000	DRAIN SCREW	1	
1-15	13253H33000H000	O RING	1	
1-16	13432H33000H000	LEVER CHOKE	1	
1-17	13389H12700H000	CAP, JET NEEDLE	1	
1-18	13295H21D00H000	O RING	1	
1-19	13225H11200H000	O RING	1	
1-20	13388H12700H000	COMPRESSION SPRING	1	
1-21	13370H21D00H000	VALVE ASSY, NEEDLE	1	
1-22	13254H21D00H000	PIN	1	
1-23	13263H11200H000	COMPRESSION SPRING	1	
1-24	13270H12900H000	BRACKET	1	
1-25	13684H17310H000	AIR VENT HOSE	1	
1-26	09494H12700H000	NEEDLE JET	1	
1-27	13299H17510H000	X RING	1	
1-28	13261H12700H000	MIXING CAP	1	

2

Fig. 9

2

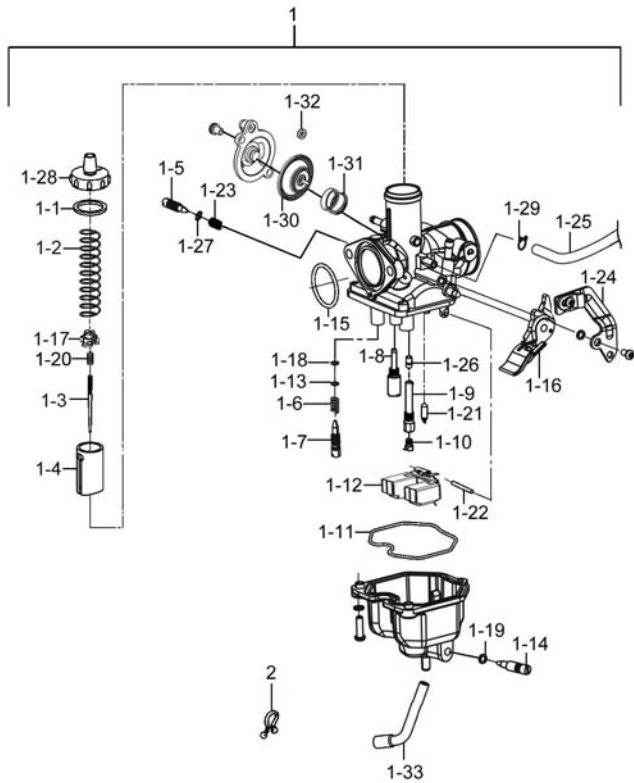


Fig.9 CARBURETOR (P05-S090-0051)

REF. No.	PART No.	DESCRIPTION	Q' TY	REMARKS
1-29	13224H2A000H000	CLIP, DRAIN HOSE	1	
1-30	13480H2G200H000	DIAPHRAGM ASSY	1	
1-31	13285H2C010H000	ACV SPRING	1	
1-32	13258H2C010H000	O-RING	1	
1-33	13683H17310H000	HOSE, DRAIN	1	
2	09408-00021-000	CLAMP	1	

Fig. 10

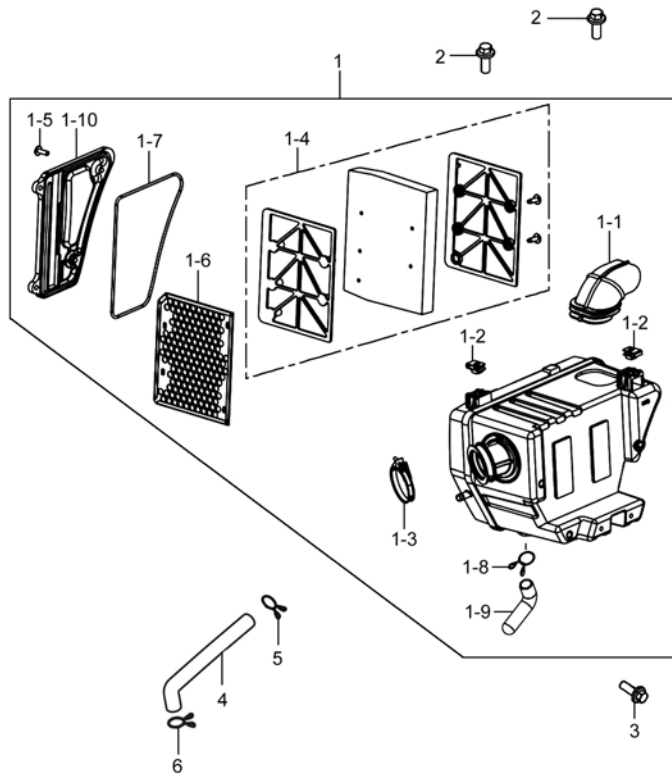


Fig.10 AIR CLEANER (P05-S100-0027)

REF. No.	PART No.	DESCRIPTION	Q'TY	REMARKS
1	13700H17501H000	CLEANER ASSY, AIR	1	
1-1	13891H17300H000	TUBE, INLET	1	
1-2	35157H37200H000	NUT	2	
1-3	13170H2C002H000	CLAMP, OUTLET TUBE	1	
1-4	13780H17Y01H000	FILTER COMP, AIR CLEANER	1	
1-5	02142-0516A-000	CROSS RECESSED HEAD SCREW	4	
1-6	13810H17300H000	TRAP COMP, FLAME	1	
1-7	13723H17300H000	GASKET, AIR CLNR CAP	1	
1-8	09401H13201H000	CLIP	1	
1-9	13863H22500H000	TUBE, DRAIN	1	
1-10	13741H17300H000	CAP, AIR CLNR	1	
2	01550-0616A-000	BOLT	2	
3	01550-0612A-000	BOLT	1	
4	13851H17500H000	TUBE, BREATHER	1	
5	09401-11102-000	CLIP	1	
6	09401-13409-000	CLIP, 2ND AIR VALVE HOSE	1	

2

Fig. 11

2

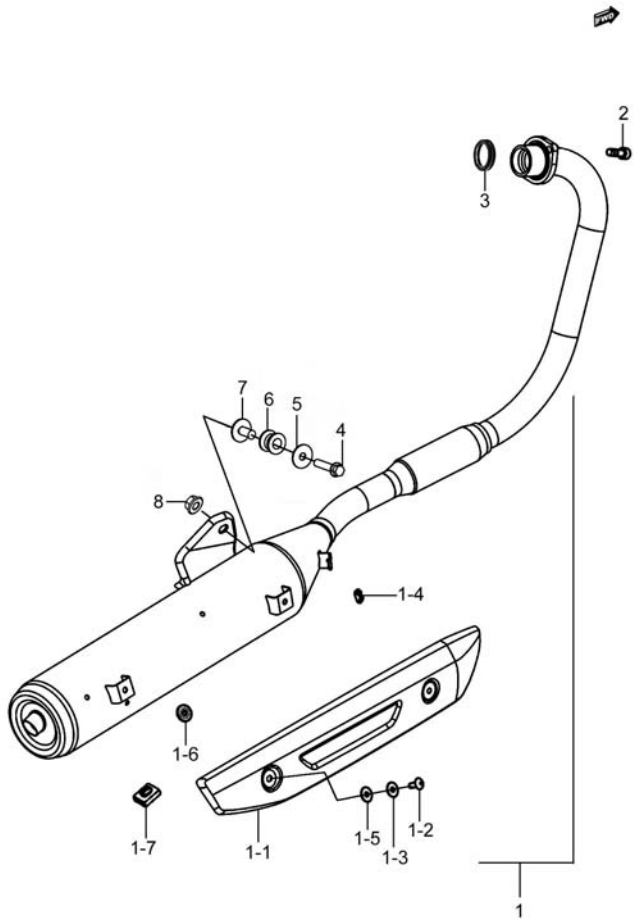


Fig.11 MUFFLER (P05-S110-0052)

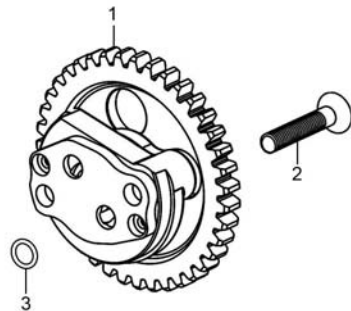
REF. No.	PART No.	DESCRIPTION	Q' TY	REMARKS
1	14036H17500H000	MUFFLER SET	1	
1-1	14781H17100H000	COVER, MUF	1	
1-2	09139-06167-000	SCREW	2	
1-3	09160-06164-000	WASHER, PLAIN	2	
1-4	14414H37200H000	CUSHION	1	
1-5	09161H06004H000	WASHER	2	
1-6	09168H06002H000	GASKET	2	
1-7	42278-26H00-000	STOPPER, CENTER STAND	1	
2	07130-0825A-000	BOLT	2	
3	14181H11200H000	GASKET, EXH PIPE	1	
4	01550-1055A-000	BOLT, HEXAGON HEAD FLANGE	1	
5	09160H10019H000	WASHER, PLAIN	1	
6	14414H28100H000	CUSHION	1	
7	14413H28101H000	SPACER	1	
8	08319-3110A-000	NUT	1	

Fig. 12



Fig.12 OIL PUMP (P05-S130-0004)

REF. No.	PART No.	DESCRIPTION	Q'TY	REMARKS
1	16400H3D000H000	PUMP ASSY, ENG OIL	1	
2	02122-0630A-000	CROSS RECESSED HEAD SCREW	2	
3	09280H35000H000	O-RING	2	



2

Fig. 13

2

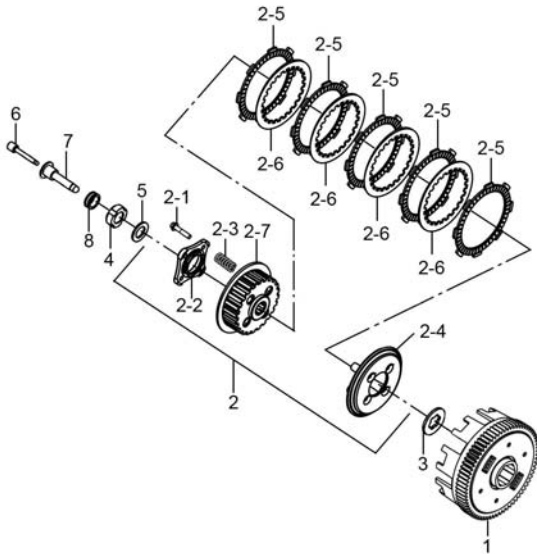


Fig.13 CLUTCH (P05-S140-0023)

REF. No.	PART No.	DESCRIPTION	Q' TY	REMARKS
1	21200H3F010H000	GEAR ASSY, PRIMARY DRIVEN	1	
2	21410H3E050H000	HUB COMP, CLUTCH SLEEVE	1	
2-1	01550-0622A-000	BOLT, HEXAGON HEAD FLANGE	4	
2-2	21471H35000H000	PLATE, CLUTCH PUSH ROD	1	
2-3	21413H3D000H000	SPRING, CLUTCH	4	
2-4	21462H3E000H000	DISC, CLUTCH PRESSURE	1	
2-5	21441H33020H000	PLATE, CLUTCH DRIVE	5	
2-6	21451H3E020H000	PLATE, CLUTCH DRIVEN	4	
2-7	21411H3E000H000	HUB, CLUTCH SLEEVE	1	
3	21481H33000H000	WASHER	1	
4	21346H33000H000	NUT, LOCK	1	
5	16581H33000H000	WASHER	1	
6	23131H3D000H000	POLE, CLUTCH PUSH	1	
7	23121H3D000H000	PIECE, CLUTCH PUSH	1	
8	09262H17001H000	BEARING, CLUTCH	1	

Fig. 14

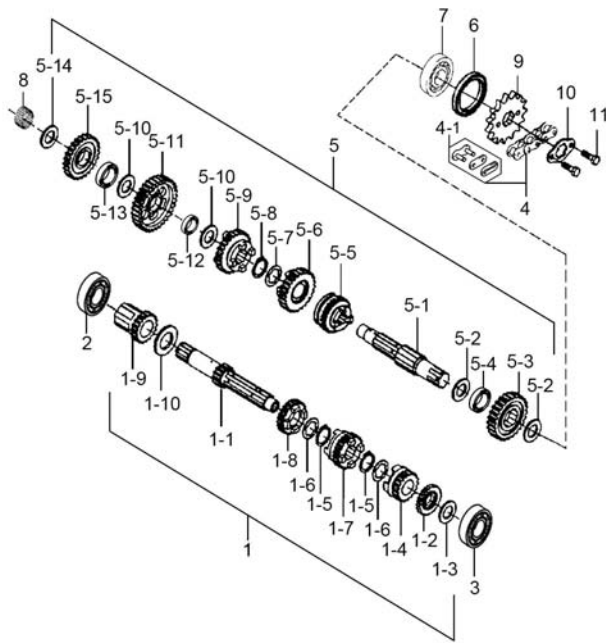


Fig.14 TRANSMISSION (P05-S150-0037)

REF. No.	PART No.	DESCRIPTION	Q'TY	REMARKS
1	24102H3E030H000	SHAFT ASSY, COUNTER	1	
1-1	24121H3F000H000	SHAFT, COUNTER	1	
1-2	24221H3E010H000	GEAR, 2ND DRIVE	1	
1-3	08211-15251-000	WASHER, 1ST DRIVEN GEAR, R THR	1	
1-4	24251H3E010H000	GEAR, 5TH DRIVE	1	
1-5	08331-31209-000	CIRCLIP	2	
1-6	24232H33000H000	WASHER	1	
1-7	24241H3E010H000	GEAR, 4TH DRIVE	1	
1-8	24231H3E000H000	GEAR, 3RD DRIVE	1	
1-9	24210H3F000H000	GEAR COMP, DRIVE	1	
1-10	09181H20270H000	WASHER	1	
2	08110-60060-000	BEARING	1	
3	09262H15010H000	BEARING	1	
4	27600H3D000H118	CHAIN ASSY, DRIVE	1	
4-1	27620H3D000H000	JOINT SET, CHAIN	1	
5	24103H3E061H000	SHAFT ASSY, DRIVE	1	
5-1	24131H3D001H000	SHAFT, DRIVE	1	
5-2	08211-20271-000	WASHER	2	
5-3	24321H3E000H000	GEAR, 2ND DRIVEN	1	
5-4	24322H3E000H000	BUSH, 2ND DRIVEN GEAR	1	
5-5	24351H3E010H000	GEAR, 5TH DRIVEN	1	
5-6	24341H3E000H000	GEAR, 4TH DRIVEN	1	
5-7	24232H33000H000	WASHER	1	
5-8	08331-31209-000	CIRCLIP	1	
5-9	24331H3E010H000	GEAR, 3RD DRIVEN	1	
5-10	09181H17240H000	WASHER	2	
5-11	24311H3E000H000	GEAR, 1ST DRIVEN	1	
5-12	24314H35000H000	BUSH, 1ST DRIVEN GEAR	1	
5-13	26263H35000H000	BUSH, KICK STARTER IDLE GEAR	1	

2

Fig. 14

2

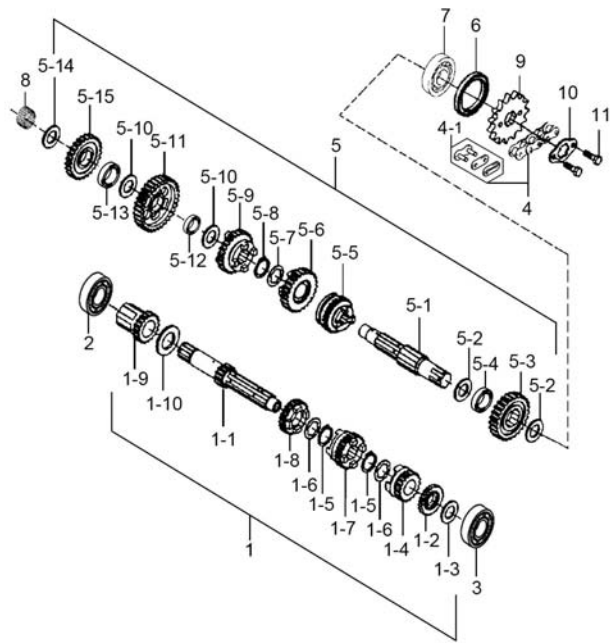


Fig.14 TRANSMISSION (P05-S150-0037)

REF. No.	PART No.	DESCRIPTION	Q' TY	REMARKS
5-14	08211-15301-000	WASHER	1	
5-15	26261H3E000H000	GEAR, KICK STARTER IDLE	1	
6	09283H20007H000	SEAL, OIL	1	
7	08110-62040-000	BEARING, DRIVE SHAFT	1	
8	09263H15002H000	BEARING, NEEDLE	1	
9	27511H36010H000	SPROCKET, ENGINE	1	
10	27521H33010H000	WASHER	1	
11	07130-0610A-000	HEXAGON SOCKET HEAD CAP SCREW	2	

Fig. 15

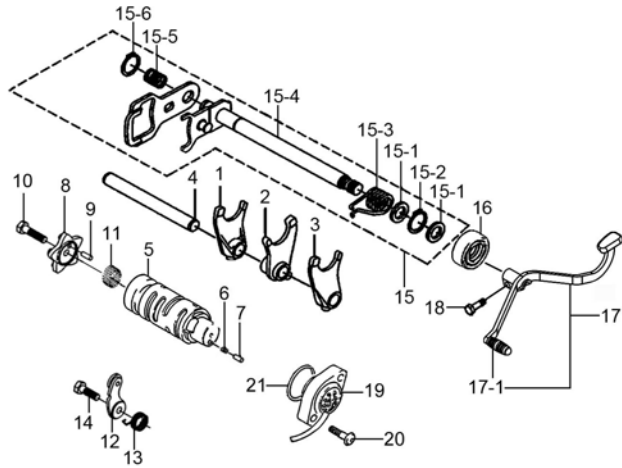


Fig.15 GEAR SHIFTING (P05-S160-0024)

REF. No.	PART No.	DESCRIPTION	Q'TY	REMARKS
1	25211H3D000H000	FORK, GEAR SHIFT, R	1	
2	25231H3D000H000	FORK, GEAR SHIFT, MIDDLE	1	
3	25241H3D000H000	FORK, GEAR SHIFT, L	1	
4	25411H35000H000	SHAFT, GEAR SHIFT FORK	1	
5	25311H36010H000	CAM, GEAR SHIFT	1	
6	09440H04030H000	SPRING, COMPRESSION	1	
7	25314H3E000H000	PIN, CAM SHIFT	1	
8	25381H3F000H000	PLATE, SHIFT CAM STOPPER	1	
9	04221-04109-000	PIN	1	
10	09128H06001H000	BOLT, HEX WITH CROSS RECESS	1	
11	09263H23000H000	BEARING, NEEDLE	1	
12	25350H35000H000	STOPPER COMP, GEAR SHIFT CAM	1	
13	09448H18001H000	SPRING, TORSION	1	
14	01500-0620A-000	BOLT	1	
15	25500H36020H000	SHAFT ASSY, GEAR SHIFT	1	
15-1	09181H16200H000	WASHER	2	
15-2	08331-31149-000	CIRCLIP, KICK SHAFT	1	
15-3	25518H35000H000	SPRING, SHIFT SHAFT RETURN	1	
15-4	25510H36020H000	SHAFT COMP, GEAR SHIFT	1	
15-5	09440H15002H000	SPRING, COMPRESSION	1	
15-6	08331-31129-000	CIRCLIP	1	
16	09283H14001H000	OIL SEAL	1	
17	25600H17100H000	LEVER ASSY, GEAR SHIFT	1	
17-1	25652H16500H000	RUBBER, GEAR SHIFT PEDAL	1	
18	01500-0820A-000	BOLT	1	
19	37720H22500H000	BASE ASSY, GEAR SHIFT TERM	1	
20	02112-0418A-000	CROSS RECESSED HEAD SCREW	2	
21	09280H19001H000	O-RING	1	

2



Fig. 16

2

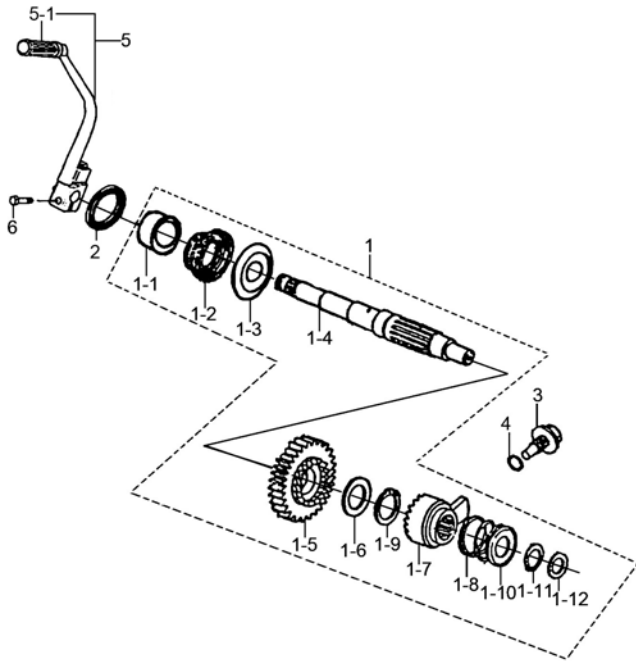


Fig.16 KICK STARTER (P05-S165-0004)

REF. No.	PART No.	DESCRIPTION	Q' TY	REMARKS
1	26210H3E000H000	SHAFT COMP, KICK STARTER	1	
1-1	26221H35000H000	GUIDE, KICK STARTER SHAFT SPRIN	1	
1-2	09448H48003H000	SPRING, TORSION	1	
1-3	26222H35000H000	HOLDER, KICK STARTER SHAFT SPRI	1	
1-4	26211H3E000H000	SHAFT, KICK STARTER	1	
1-5	26241H35000H000	GEAR, KICK STARTER DRIVE	1	
1-6	09181H20001H000	SHIM	1	
1-7	26251H35000H000	RATCHET WHEEL	1	
1-8	26226H36000H000	SPRING, RELEASE	1	
1-9	09380H19001H000	RING, SNAP	1	
1-10	26225H35000H000	SEAT, RELEASE SPRING	1	
1-11	09380H15001H000	RING, SNAP	1	
1-12	09181H12004H000	SHIM	1	
2	09283H16001H000	SEAL, OIL	1	
3	09135H12001H000	BOLT	1	
4	09280H11001H000	O-RING	1	
5	26300H22510H000	LEVER ASSY, KICK STARTER	1	
5-1	26352-01000-000	RUBBER, KICK STARTER LEVER	1	
6	01500-0825A-000	BOLTS, HEXAGON HEAD	1	

Fig.17

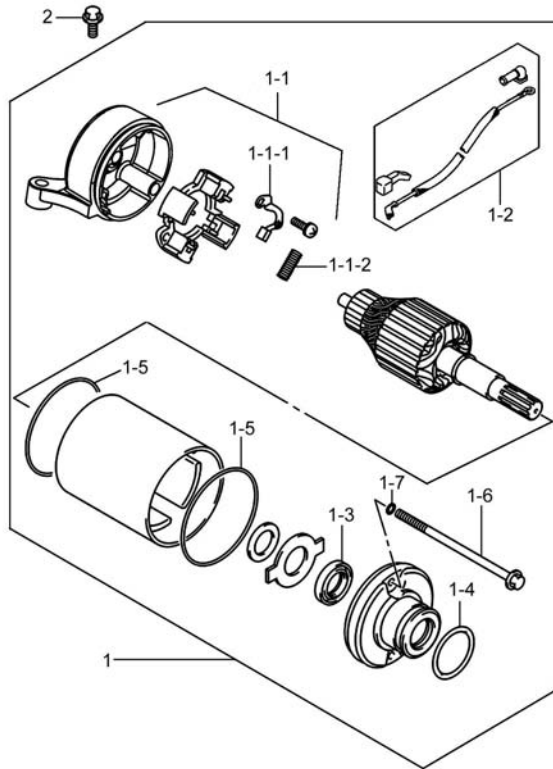


Fig.17 STARTING MOTOR (P05-S170-0022)

REF. No.	PART No.	DESCRIPTION	Q' TY	REMARKS
1	31100H17101H000	MOTOR ASSY, STARTING	1	
1-1	31175H36000H000	FRAME ASSY	1	
1-1-1	31133H2A200H000	BRUSH, STARTER MOTOR, MINUS	1	
1-1-2	31135H36000H000	SPRING, STARTER MOTOR BRUSH	2	
1-2	33810H17101H000	WIRE, STARTER MOTOR	1	
1-3	31153H22500H000	OIL SEAL, STARTER MOTOR	1	
1-4	31156H22500H000	O-RING	1	
1-5	31264H36000H000	O-RING	2	
1-6	31281H36000H000	BOLT	2	
1-7	31156H36000H000	O-RING	2	
2	01547-0630A-000	BOLT	2	

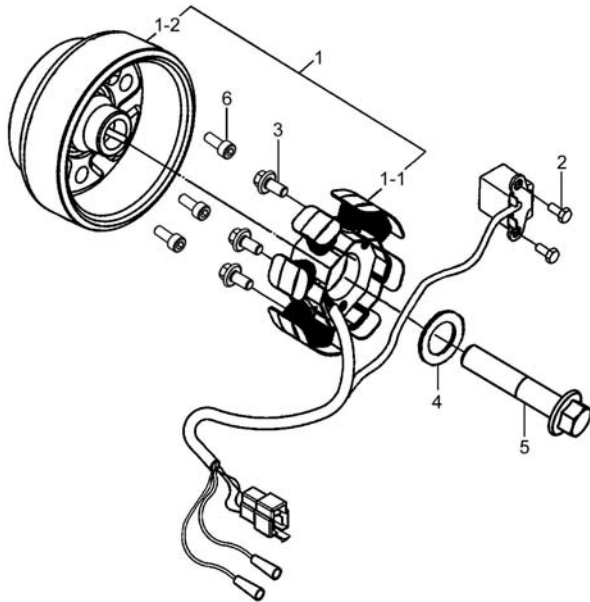
3



Fig. 18

Fig.18 MAGNETO (P05-S180-0017)

REF. No.	PART No.	DESCRIPTION	Q' TY	REMARKS
1	32100H2F300H000	MAGNETO ASSY	1	
1-1	32101H22500H000	STATOR ASSY	1	
1-2	32102H2F300H000	ROTOR ASSY	1	
2	09100H05004H000	BOLT, HEXAGON	2	
3	01547-0525A-000	BOLTS, HEXAGON HEAD FLANGE	3	
4	32113H35000H000	WASHER	1	
5	32111H33000H000	BOLT	1	
6	32491H33010H000	BOLT, MAGNETO ROTOR	3	



3

Fig. 19

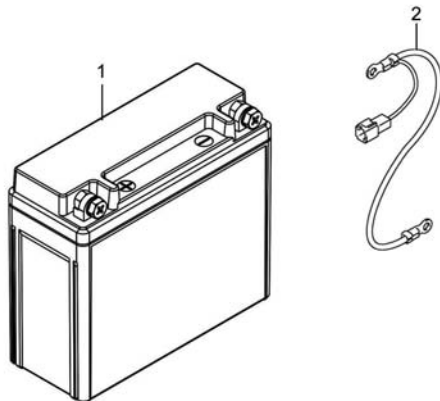


Fig.19 BATTERY (P05-S190-0032)

REF. No.	PART No.	DESCRIPTION	Q'TY	REMARKS
1	33620H17400H000	FILLED BATTERY ASSY	1	
2	33860H17100H000	WIRE, BATTERY MINUS LEAD	1	

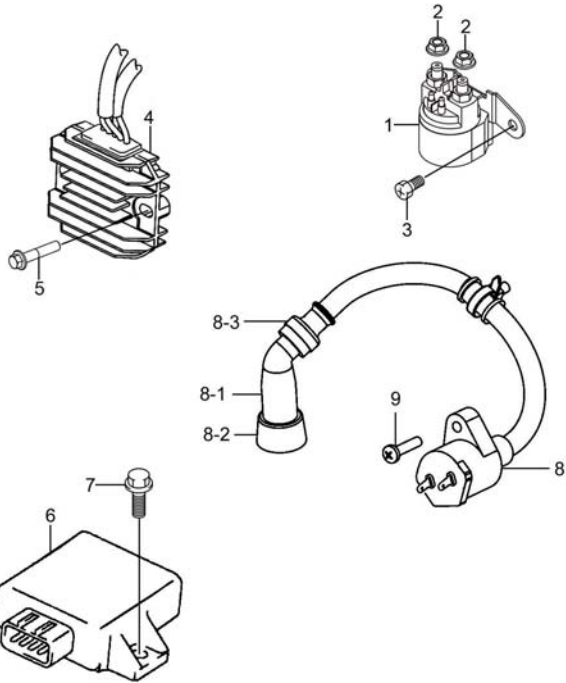
3



Fig. 20

Fig.20 ELECTRICAL (P05-S200-0048)

REF. No.	PART No.	DESCRIPTION	Q' TY	REMARKS
1	31800-49110-000	RELAY ASSY, STARTING MOTOR	1	
2	08361-3506A-000	NUT	2	
3	09128-06004-000	SCREW, STG MOT RLY	2	
4	32800H05523H000	RECTIFIER ASSY	1	
5	01550-0612A-000	BOLT	2	
6	32900H2A401H000	CDI UNIT	1	
7	01550-0625A-000	BOLT	2	
8	33410H17300H000	COIL ASSY, IGNITION	1	
8-1	33510-04H10-000	CAP, SPARK PLUG	1	
8-2	33541H05500H000	SEAL, SPARK PLUG	1	
8-3	33542H05500H000	SEAL, HIGH TENSION CORD	1	
9	02112-1520A-000	CROSS RECESSED HEAD SCREW	1	



3

Fig. 21

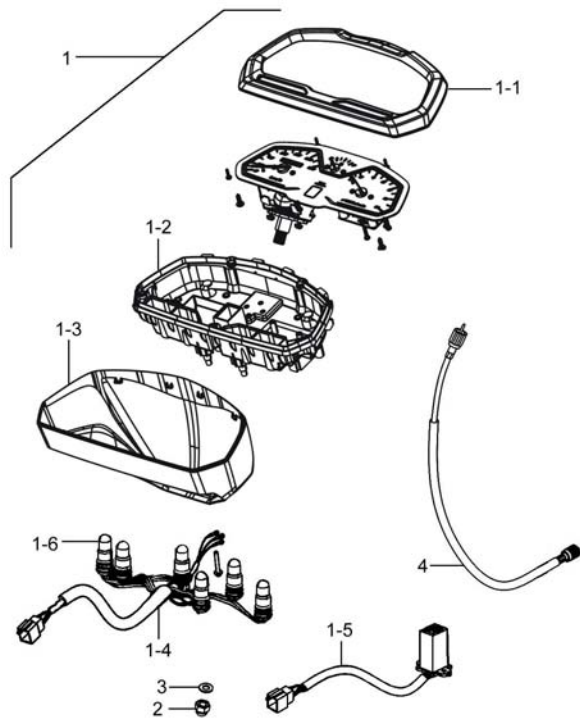


Fig.21 SPEEDOMETER (P05-S210-0044)

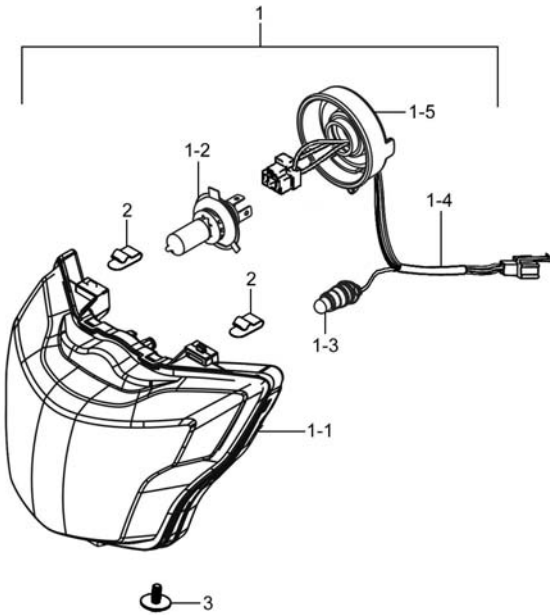
REF. No.	PART No.	DESCRIPTION	Q'TY	REMARKS
1	34100H17301H000	SPEEDOMETER ASSY	1	
1-1	34150H17101H000	HOOD, SPEEDOMETER	1	
1-2	34111H17300H000	CASE, SPEEDOMETER, LOWER	1	
1-3	34152H17100H000	LOW CASE, SPEEDOMETER	1	
1-4	34173H17300H000	WIRE HARNESS, SPEEDOMETER	1	
1-5	34173H17100H000	WIRE HARNESS, SPEEDOMETER	1	
1-6	09471-12077-000	BULB	6	T10 12V 2W
2	08310-0006A-000	NUT	3	
3	09160-06129-000	WASHER, PLAIN	3	
4	34910H12E01H000	CABLE ASSY, SPEEDOMETER	1	

3

Fig. 22

Fig.22 HEADLAMP (P05-S220-0037)

REF. No.	PART No.	DESCRIPTION	Q' TY	REMARKS
1	35100H17100H000	HEADLAMP ASSY	1	
1-1	35121H17100H000	UNIT, HEADLAMP	1	
1-2	09471H12001H000	BULB (12V, 35/35W)	1	HS1 12V 35/35W
1-3	09471-12081-000	BULB, POSITION LAMP	1	12V 5W
1-4	35171H7H000H000	CORD, HEADLAMP	1	
1-5	35174H7J000H000	BOOT, HEADLAMP HOUSING	1	
2	35194H51000H000	CLAMP, HEAD LAMP	2	
3	09136-05051-000	SCREW	1	



3



Fig. 23

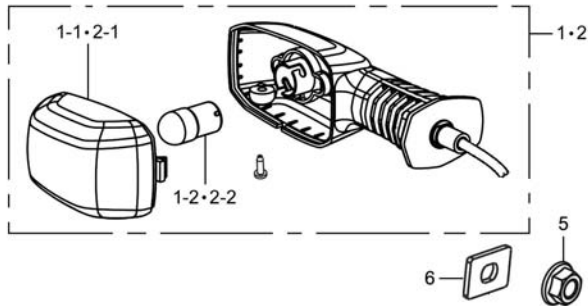
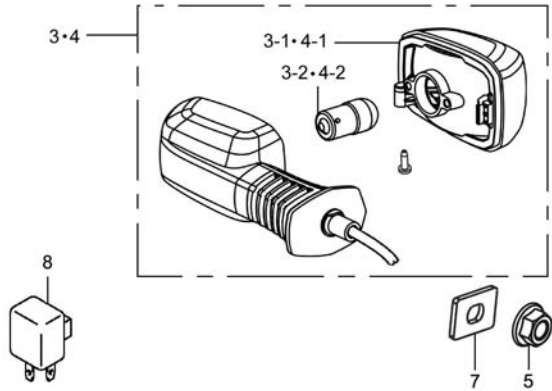


Fig.23 TURN SIGNAL LAMP (P05-S230-0034)

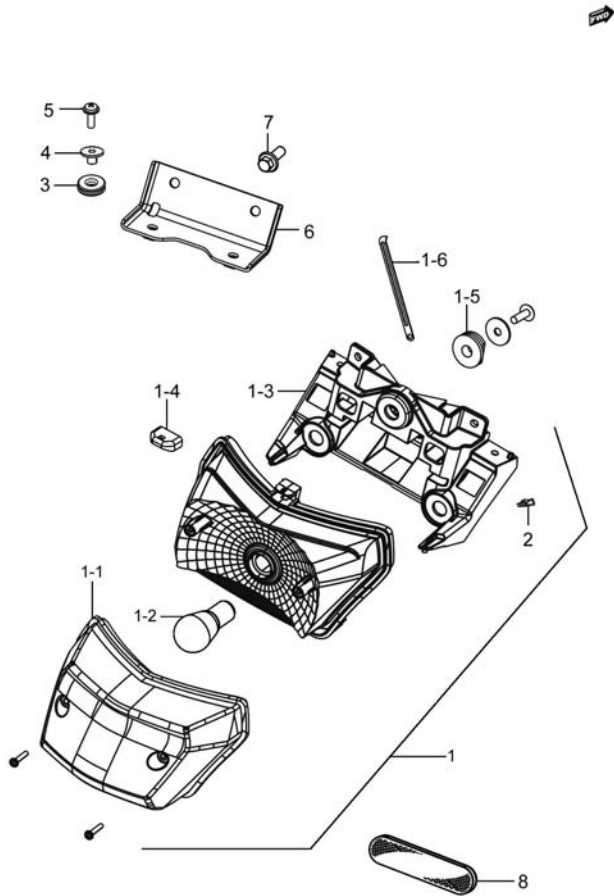
REF. No.	PART No.	DESCRIPTION	Q'TY	REMARKS
1	35601H11A01H000	LAMP ASSY, FRONT TURNSIGNAL, R	1	
1-1	35610H11A00H000	UNIT, FRONT TURNSIGNAL, R	1	
1-2	09471-12177-000	BULB (12V 10W)	1	12V 10W
2	35602H11A01H000	LAMP ASSY, FRONT TURNSIGNAL, L	1	
2-1	35630H11A00H000	UNIT, FRONT TURNSIGNAL, L	1	
2-2	09471-12177-000	BULB (12V 10W)	1	12V 10W
3	35603H11A01H000	LAMP ASSY, REAR TURNSIGNAL, R	1	
3-1	35630H11A00H000	UNIT, FRONT TURNSIGNAL, L	1	
3-2	09471-12177-000	BULB (12V 10W)	1	12V 10W
4	35604H11A01H000	LAMP ASSY, REAR TURNSIGNAL, L	1	
4-1	35610H11A00H000	UNIT, FRONT TURNSIGNAL, R	1	
4-2	09471-12177-000	BULB (12V 10W)	1	12V 10W
5	08316-1010A-000	NUT	4	
6	35616H11A01H000	PLATE, TURNSIGNAL	2	
7	35616H17500H000	PLATE, TURNSIGNAL	2	
8	38610H11A30H000	RELAY ASSY, TURNSIGNAL	1	

3

Fig. 24

Fig.24 REAR COMBINATION LAMP (P05-S240-0032)

REF. No.	PART No.	DESCRIPTION	Q' TY	REMARKS
1	35710H17100H000	LAMP ASSY, REAR COMB	1	
1-1	35712H17100H000	LENS, REAR COMB	1	
1-2	09471-12128-000	BULB (12V, 21/5W)	1	12V P21/5W
1-3	35726H17100H000	BRACKET, REAR COMB LAMP	1	
1-4	35764H2E000H000	CUSHION, REAR COMB, INNER	1	
1-5	35765H2E000H000	CUSHION, REAR COMB, OUTER	3	
1-6	09404-06030-000	CLAMP	1	
2	09148-05077-000	NUT	2	
3	09320-08047-000	CUSHION, SEAT TAIL COVER FRONT	2	
4	09180H06018H000	SPACER	2	
5	02142-0620A-000	CROSS RECESSED HEAD SCREW	2	
6	35716H17100H000	BRACKET, REAR COMB	1	
7	01550-0616A-000	BOLT	2	
8	35970H2C001H000	REFLEX REFLECTOR ASSY, REAR	1	



3

Fig. 25

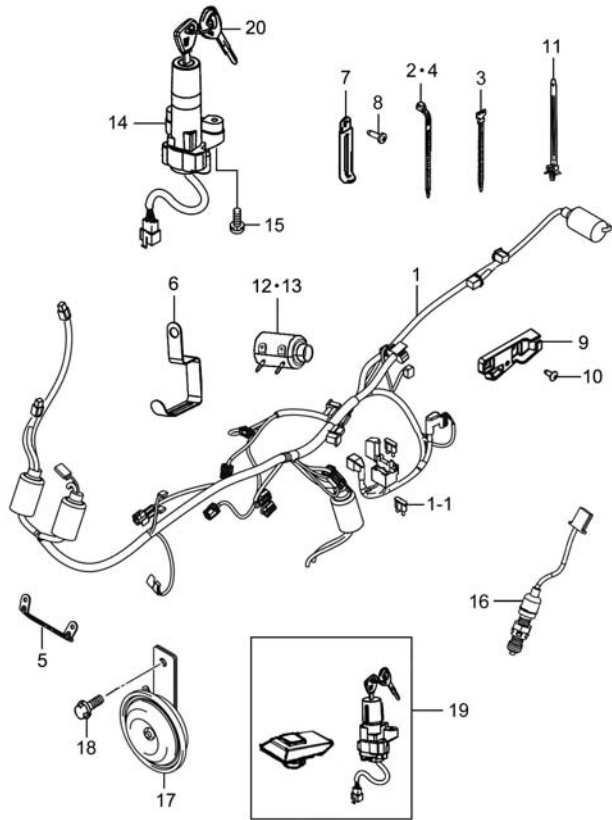


Fig.25 WIRING HARNESS (P05-S250-0052)

REF. No.	PART No.	DESCRIPTION	Q'TY	REMARKS
1	36610H17500H000	HARNESS WIRING	1	
1-1	36720H2C100H000	FUSE ASSY	1	15A
2	09407-14403-000	CLAMP, FUEL HOSE	6	L=125
3	09407-12402-000	CLAMP, WIRING HARNESS	2	L=128
4	09407-18402-000	CLAMP, FUEL FILTER NO. 2	2	L=165
5	51881H17100H000	BRACKET, FRONT FORK COVER	1	
6	36651-26H60-000	CLAMP, WIRING HARNESS	1	T=55.8
7	09404-06030-000	CLAMP	2	
8	03541-0416A-000	CROSS RECESSED HEAD TAPPING SCREW	2	
9	36619H17100H000	BRACKET, WIRING HARENESS CLAMP	1	
10	03541-0616B-000	CROSS RECESSED HEAD TAPPING SCREW	2	
11	36651-12F10-000	CLAMP	2	
12	36618H79201H000	BOOT, WIRING HARNESS	1	OD=50
13	36618H2A000H000	BOOT, WIRING HARNESS	2	OD=60
14	37100H17100H000	LOCK ASSY, STEERING	1	
15	09139-06048-000	BOLT, STEERING LOCK	2	
16	37740H2J000H000	SWITCH ASSY, STOP LAMP	1	
17	38500-055E0-000	HORN ASSY	1	
18	09103-08527-000	BOLT	1	
19	37011H1710AH000	LOCK SET	1	
20	37146H17100H000	KEY, BLANK	1	

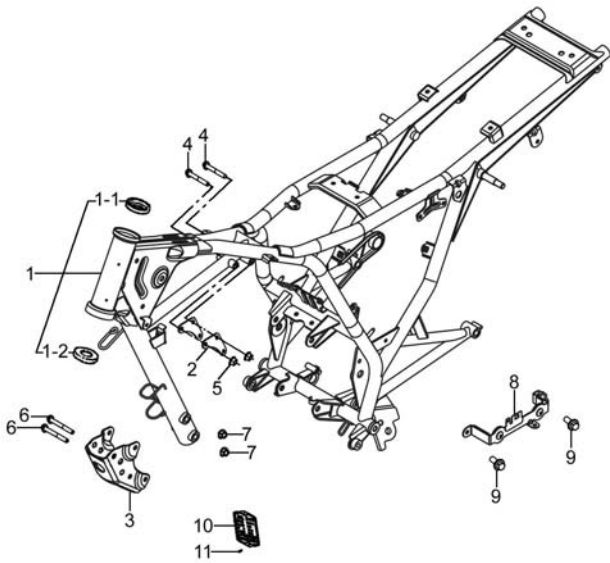
3



Fig. 26

Fig.26 FRAME (P05-S260-0082)

REF. No.	PART No.	DESCRIPTION	Q' TY	REMARKS
1	41100H17Y10H000	FRAME SET	1	
1-1	51611H2A201H000	RACE, STEERING INNER UPPER	1	
1-2	51612H2A200H000	RACE, STEERING INNER LOWER	1	
2	41991H17100H000	PLATE, ENG MTG UPPER	2	
3	41992H17100H000	BRACKET, ENG MTG LOWER	1	
4	09103H08011H000	BOLT	2	
5	08319-3108A-000	NUT	2	
6	09103H10013H000	BOLT	2	
7	08319-3110A-000	NUT	2	
8	41560H17300H000	BRACKET ASSY, BATTERY	1	
9	01550-0610A-000	BOLTS, HEXAGON HEAD FLANGE	2	
10	68311H56110H000	PLATE, LICENSE	1	
11	09229H03003H000	RIVET, BLIND	2	



4

Fig. 27

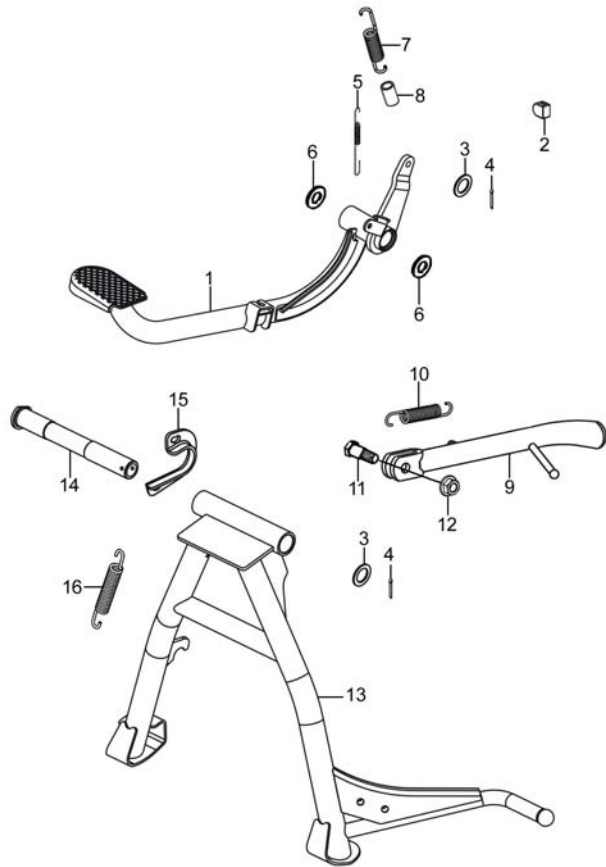


Fig.27 STAND (P05-S270-0035)

REF. No.	PART No.	DESCRIPTION	Q'TY	REMARKS
1	43110H17501H000	PEDAL COMP, BRAKE	1	
2	43125H2A203H000	CUSHION, BRAKE PEDAL	1	
3	09160H17001H000	WASHER, PLAIN	2	
4	04111-2525A-000	COTTER PIN	2	
5	43115H36600H000	SPRING, STOP LAMP	1	
6	43116H22500H000	SEAL, BRAKE PEDAL	2	
7	09443H14004H000	SPRING, TENSION	1	
8	43142H21302H000	HOSE, RUBBER	1	
9	42310-45F20-000	STAND COMP, PROP	1	
10	42241-26H10-000	SPRING, CENTER STAND	1	
11	42341-36H00-000	BOLT, PROP STAND	1	
12	08319-3110A-000	NUT	1	
13	42100H17100H000	STAND COMP, CENTER	1	
14	42211H17100H000	SHAFT, CENTER STAND	1	
15	42112H2D002H000	SPRING PLATE, CENTER STAND	1	
16	09443-19020-000	SPRING, TENSION	1	

4

Fig. 28

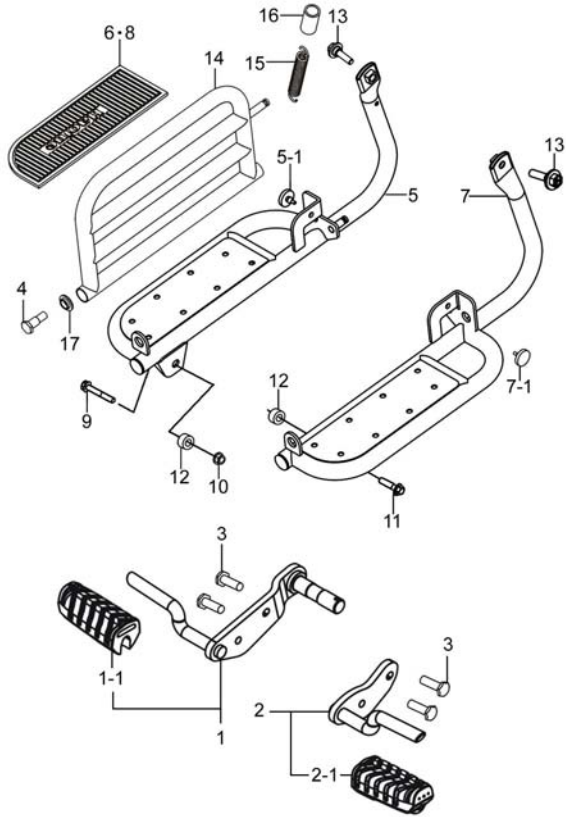


Fig.28 FOOTREST (P05-S280-0052)

REF. No.	PART No.	DESCRIPTION	Q' TY	REMARKS
1	43501H17101H000	FOOTREST ASSY, FRONT, R	1	
1-1	43551H17100H000	RUBBER, FRONT FOOTREST	1	
2	43502H17100H000	FOOTREST ASSY, FRONT, L	1	
2-1	43551H17100H000	RUBBER, FRONT FOOTREST	1	
3	01550-1025B-000	HEXAGON BOLT WITH FLANGE	4	
4	42322H2A200H000	BOLT, SIDE STAND	4	
5	43610H17100H000	BOARD COMP, PILLION FOOTREST, R	1	
5-1	41569H05610H000	WASHER RUBBER	1	
6	43618H2A200H000	RUBBER, PILLION FOOTREST, R	1	
7	43710H17100H000	BOARD COMP, PILLION FOOTREST, L	1	
7-1	41569H05610H000	WASHER RUBBER	1	
8	43718H2A200H000	RUBBER, PILLION FOOTREST, L	1	
9	01550-1060A-000	BOLT, HEXAGON HEAD FLANGE	1	
10	08319-3110A-000	NUT	1	
11	01550-1035A-000	BOLTS, HEXAGON HEAD FLANGE	1	
12	43829H17100H000	BOSS, PILLION FOOTREST	2	
13	01550-1020A-000	BOLT, HEXAGON HEAD FLANGE	2	
14	46311H2A200H000	OVERTURN CARRIER	2	
15	09443H16007H000	SPRING, TENSION	2	
16	43141H17100H000	RUBBER, SPRING	2	
17	43631H12600H000	SPACER, PILLION FOOTREST	4	

4

Fig. 29

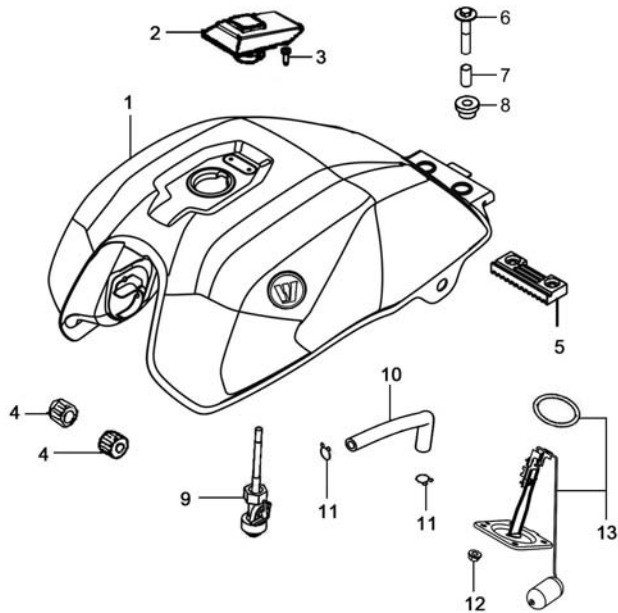


Fig.29 FUEL TANK (P05-S290-0053)

REF. No.	PART No.	DESCRIPTION	Q'TY	REMARKS
1	44011H17302HF01	FUEL TANK SET (RED)	1	
1	44011H17302HF02	FUEL TANK SET (BLUE)	1	
1	44011H17302HF03	FUEL TANK SET (BLACK)	1	
2	44200H11750H000	CAP ASSY, FUEL TANK FILLER	1	
3	02112-0406A-000	CROSS RECESSED HEAD SCREW	2	
4	44541H11200H000	CUSHION, FRONT	2	
5	44542-38300-000	CUSHION, FUEL TANK REAR NO. 1	1	
6	09116-06084-000	BOLT, FUEL TANK REAR	2	
7	09180-06067-000	SPACER, FUEL TANK REAR	2	
8	44542-36H10-000	CUSHION, FUEL TANK REAR UPPER	2	
9	44300H2A240H000	COCK ASSY, FUEL	1	
10	44421H17300H000	HOSE, OUTLET	1	
11	09401H08302H000	CLAMP	2	
12	08316-1006A-000	NUT	4	
13	34810H17300H000	GAUGE ASSY, FUEL LEVEL SENDER	1	

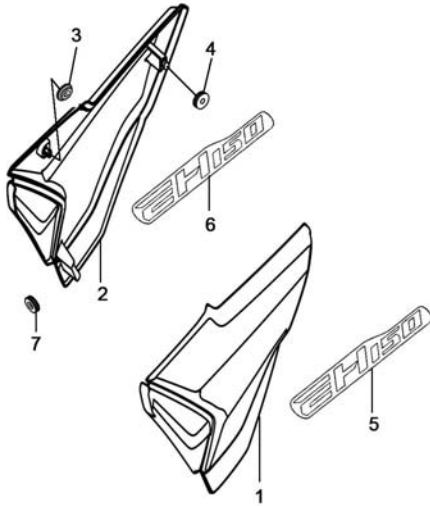
4



Fig. 30

Fig.30 FRAME COVER (P05-S310-0055)

REF. No.	PART No.	DESCRIPTION	Q' TY	REMARKS
1	47211H17100H00	COVER, FRAME, L	1	
2	47111H17100H00	COVER, FRAME, R	1	
3	47312H02100H00	RUBBER CUSHION	2	
4	09320-08513-000	CUSHION	2	
5	68136H17100HTA1	TAPE, COVER SIDE, L (TA1)	1	
6	68135H17100HTA1	TAPE, FRAME COVER, R (TA1)	1	
7	09320-03004-000	CUSHION, FRAME COVER LOWER, R	2	



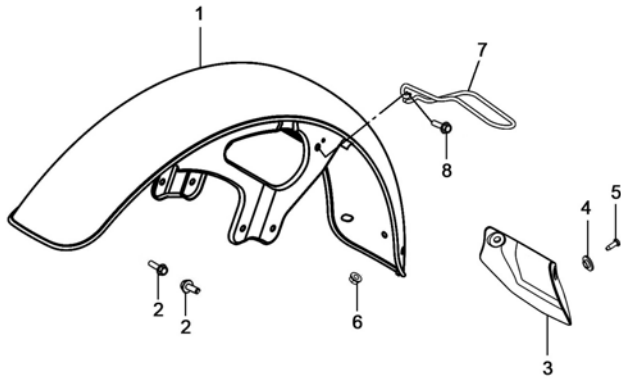
4



Fig. 31

Fig.31 FRONT FENDER (P05-S320-0029)

REF. No.	PART No.	DESCRIPTION	Q' TY	REMARKS
1	53110H17101H000	FENDER COMP, FRONT	1	
2	01580-0616A-000	HEXAGON HEAD BOLT SET WITH WASHER	4	
3	53115H17102H000	DUST CAP, FR FENDER	1	
4	53116H11200H000	SPACING	2	
5	02142-0512A-000	CROSS RECESSED HEAD SCREW	2	
6	08316-1005A-000	HEXAGON FLANGE NUT	2	
7	58621H17101H000	GUIDE, SPEEDOMETER CABLE	1	
8	01550-0610A-000	BOLTS, HEXAGON HEAD FLANGE	1	

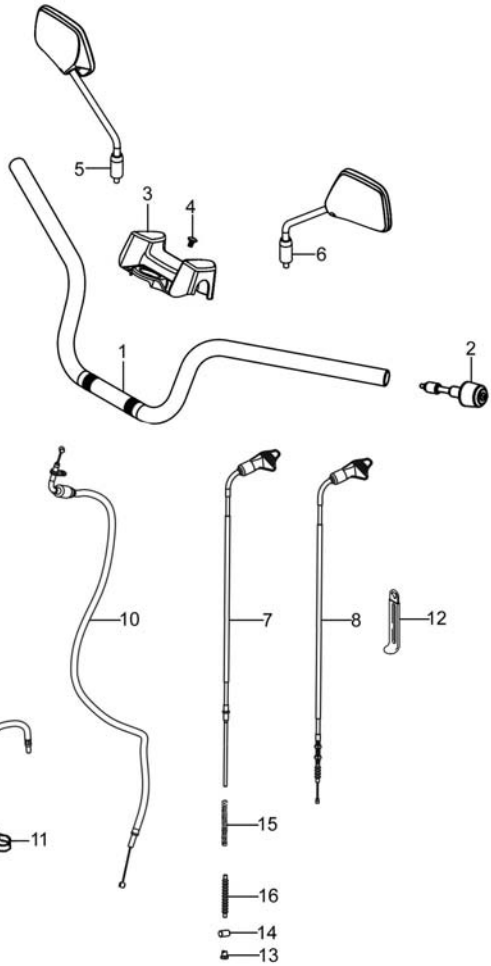


4



Fig. 32

Fig.32 HANDLEBAR (P05-S330-0069)



REF. No.	PART No.	DESCRIPTION	Q' TY	REMARKS
1	56111H17500H000	HANDLEBAR	1	
2	56270H17100H000	BALANCER ASSY, HANDLEBAR	2	
3	56171H2F000H000	COVER, STEERING HEAD	1	
4	09139H06007H000	SCREW	1	
5	56500H17101H000	MIRROR ASSY, REAR VIEW, R	1	
6	56600H17101H000	MIRROR ASSY, REAR VIEW, L	1	
7	58110H17100H000	CABLE COMP, FRONT BRAKE	1	
8	58200H17100H000	CABLE ASSY, CLUTCH	1	
9	58300H17300H000	CABLE ASSY, THROTTLE	1	
10	58410H17300H000	CABLE COMP, STARTER	1	
11	34938H12600H000	CLAMP	1	
12	36651-45F10-000	CLAMP	1	
13	09150H06001H000	NUT	1	
14	09209H12004H000	PIN	1	
15	09440H09003H000	SPRING, COMPRESSION	1	
16	09287H09001H000	SEAL, DUST	1	

4

Fig. 33

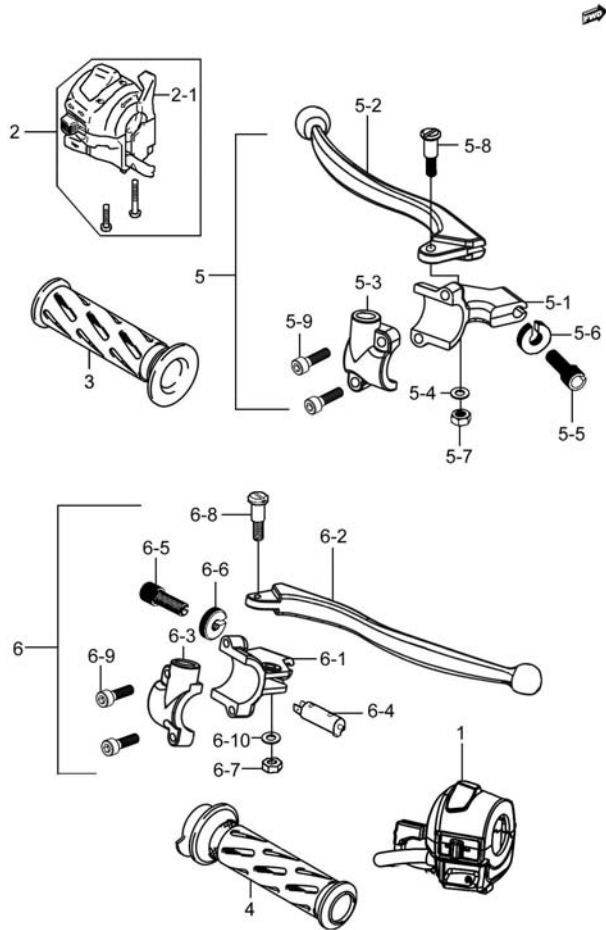


Fig.33 HANDLE SWITCH (P05-S340-0052)

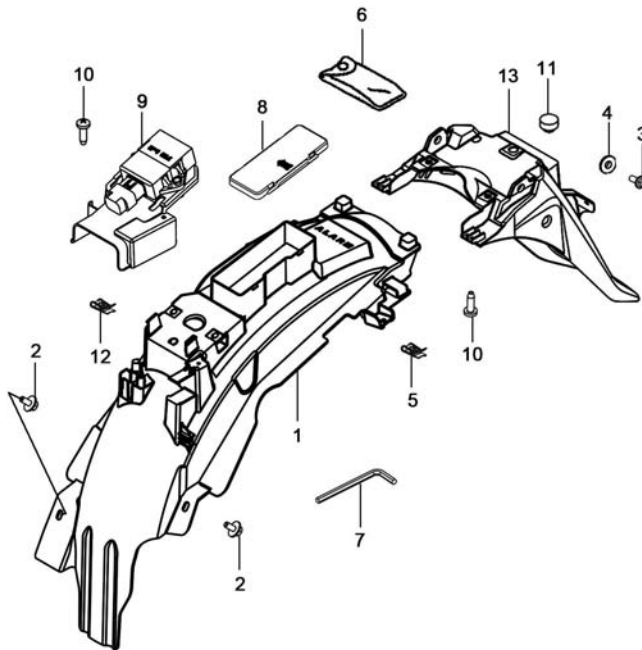
REF. No.	PART No.	DESCRIPTION	Q'TY	REMARKS
1	37200H17500H000	SWITCH ASSY, HANDLE, R	1	
2	37400H2E030H000	SWITCH ASSY, HANDLE, L	1	
2-1	37571H05503H000	LEVER, CHOKE	1	
3	57211-45FB0-000	GRIP, L	1	
4	57110-28G10-000	GRIP COMP THROTTLE	1	
5	57500H17111H000	LEVER ASSY, CLUTCH & SWITCH	1	
5-1	57511H17100H000	HOLDER, CLUTCH	1	
5-2	57621H17100H000	LEVER, CLUTCH	1	
5-3	57512H12900H000	HOLDER	1	
5-4	08321-2105B-000	SPRING LOCK WASHER	1	
5-5	57441H2J000H000	ADJUSTER, WIRE	1	
5-6	57442H12910H000	NUT, LOCK	1	
5-7	08310-0005B-000	HEXAGON NUT	1	
5-8	57431H12910H000	BOLT, LEVER PIVOT	1	
5-9	07130-0520B-000	HEXAGON SOCKET HEAD CAP SCREW	2	
6	57300H17100H000	LEVER ASSY, FR BRAKE & SWITCH	1	
6-1	57311H12900H000	HOLDER, FRONT BRAKE	1	
6-2	57421H12900H000	LEVER, FRONT BRAKE	1	
6-3	57512H12910H000	HOLDER	1	
6-4	57470H12900H000	SWITCH ASSY, BRAKE	1	
6-5	57441H12910H000	ADJUSTER, WIRE	1	
6-6	57442H12910H000	NUT, LOCK	1	
6-7	08310-0005B-000	HEXAGON NUT	1	
6-8	57431H12910H000	BOLT, LEVER PIVOT	1	
6-9	07130-0520B-000	HEXAGON SOCKET HEAD CAP SCREW	2	
6-10	08321-2105B-000	SPRING LOCK WASHER	1	

4

Fig. 34

Fig.34 REAR FENDER (P05-S350-0039)

REF. No.	PART No.	DESCRIPTION	Q' TY	REMARKS
1	63112H17400H000	BODY, REAR FENDER, FRONT	1	
2	09118H06002H000	BOLT WITH WASHER	2	
3	01550-0620A-000	BOLTS, HEXAGON HEAD FLANGE	2	
4	09180H06025H000	SPACER	2	
5	09148-05077-000	NUT	2	
6	09800H20027H000	TOOL ASSY	1	
7	09816-00059-000	SPANNER 5	1	
8	47432H17100H000	CAP, TOOL BOX	1	
9	63152H17300H000	COVER, AIR CLEANER WATERPROOF	1	
10	09136H04003H000	SCREW WITH WASHER	5	
11	09329-10001-000	CUSHION	1	
12	35157H22501H000	NUT	2	
13	63113H17400H000	BODY, REAR FENDER, REAR	1	



4

Fig. 35

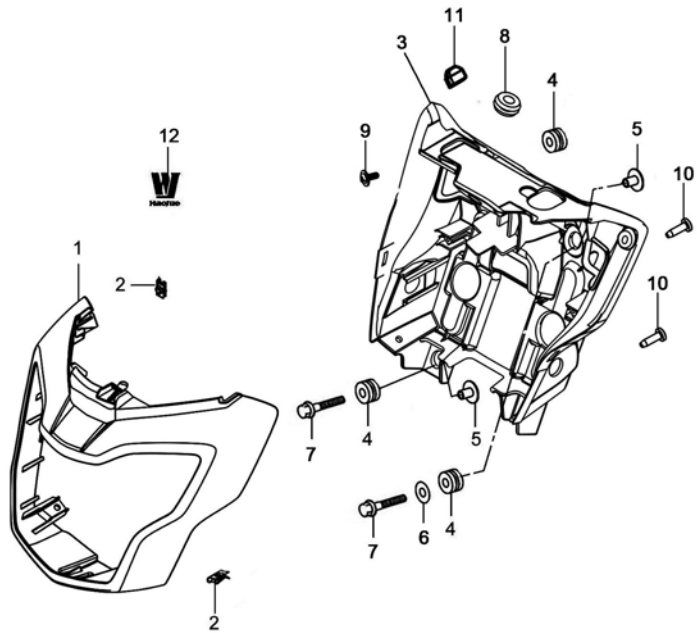


Fig.35 COWLING (P05-S360-0030)

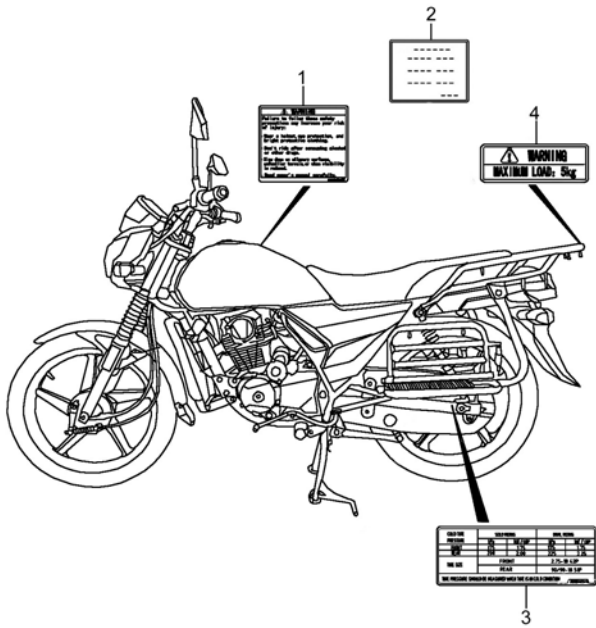
REF. No.	PART No.	DESCRIPTION	Q' TY	REMARKS
1	94411H17100H104	BODY, COWLING (RED)	1	
1	94411H17100H608	BODY, COWLING (BLUE)	1	
1	94411H17100H541	BODY, COWLING (BLACK)	1	
2	09148-05077-000	NUT	4	
3	56321H17101H000	COVER, HANDLE REAR	1	
4	09320-08047-000	CUSHION, SEAT TAIL COVER FRONT	5	
5	09180H06022H000	SPACER	4	
6	09160-06027-000	WASHER, CHAIN CASE FRONT	2	
7	01550-0625A-000	BOLT	4	
8	09320H07001H000	CUSHION	3	
9	03541-0512A-000	CROSS RECESSED HEAD TAPPING SCREW	2	
10	03241-0512B-000	SCREW	4	
11	35764H2C000H000	CUSHION, REAR COMB, INNER	1	
12	68170H12E00H000	LOGO	1	

4

Fig. 36

Fig.36 LABEL (P05-S370-0073)

REF. No.	PART No.	DESCRIPTION	Q' TY	REMARKS
1	68319H22510H000	LABEL, GENERAL WARNING	1	
2	99011H17502H000	MANUAL, OWNER'S	1	
3	68332H12911H000	LABEL, TIRE INFORMATION	1	
4	68391H05700H000	LABEL, LOADING CAPACITY	1	



4

Fig. 37

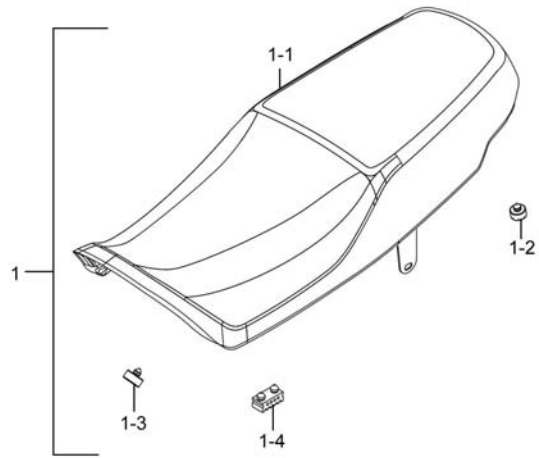


Fig.37 SEAT (P05-S380-0026)

REF. No.	PART No.	DESCRIPTION	Q'TY	REMARKS
1	45100H17100H000	SEAT ASSY	1	
1-1	45160H17100H000	COVER COMP, SEAT	1	
1-2	45148-20G00-000	CUSHION, SEAT MOUNT REAR	2	
1-3	45148-33G00-000	CUSHION, SEAT MOUNT REAR	2	
1-4	45147-12FB0-000	CUSHION, SEAT MOUNT	4	
2	56272H2G101H000	EXPANDER, HANDLE BALANCER	2	
3	09180H06037H000	SPACER	2	
4	07130-0620B-000	SCREWS, HEXAGON SOCKET HEAD CAP	2	

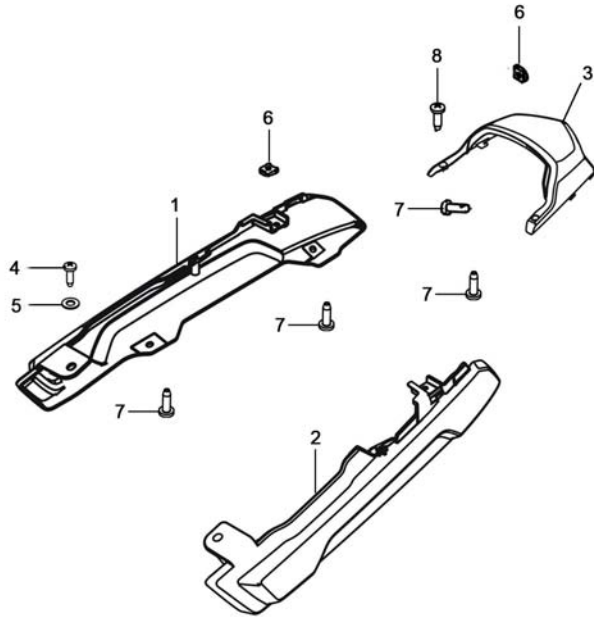
4



Fig. 38

Fig.38 COVER,SEAT TAIL (P05-S390-0046)

REF. No.	PART No.	DESCRIPTION	Q' TY	REMARKS
1	45511H17100H000	COVER, SEAT TAIL, R	1	
2	45512H17100H000	COVER, SEAT TAIL, L	1	
3	45513H17100H000	COVER, SEAT TAIL, CTR	1	
4	02142-0616A-000	CROSS RECESSED HEAD SCREW	2	
5	09169-06071-000	WASHER, FRONT LEG SHIELD	2	
6	09148-05077-000	NUT	4	
7	03241-0512A-000	CROSS RECESSED HEAD TAPPING SCREW	8	
8	03541-0416A-000	CROSS RECESSED HEAD TAPPING SCREW	2	



4

Fig. 39

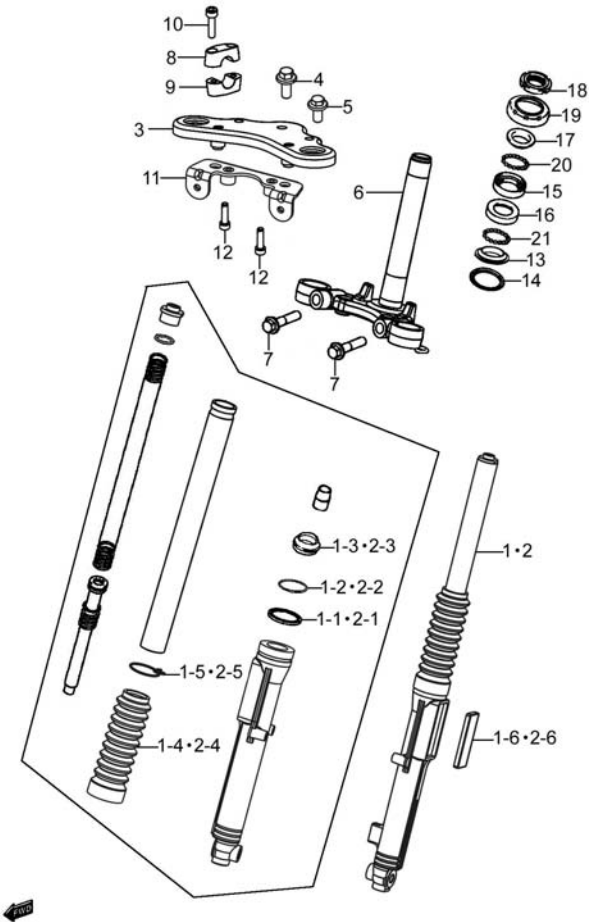


Fig.39 STEERING STEM (P05-S400-0052)

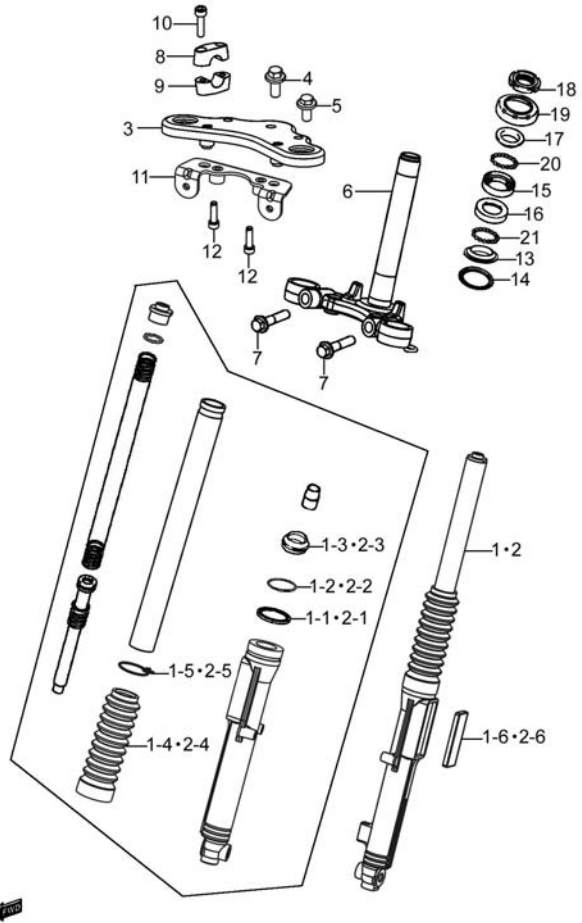
REF. No.	PART No.	DESCRIPTION	Q'TY	REMARKS
1	51103H17101H000	DAMPER ASSY, FRONT FORK, R	1	
1-1	51153H12710H000	OIL SEAL	1	
1-2	51156H12710H000	RING STOPPER OIL SEAL	1	
1-3	51173H12710H000	SEAL, DUST	1	
1-4	51571H11A00H000	BOOT	1	
1-5	51575H11A00H000	BAND, BOOT	1	
1-6	35950H2F000H000	REFLEX REFLECTOR ASSY, FR SIDE	1	
2	51104H17101H000	DAMPER ASSY, FRONT FORK, L	1	
2-1	51153H12710H000	OIL SEAL	1	
2-2	51156H12710H000	RING STOPPER OIL SEAL	1	
2-3	51173H12710H000	SEAL, DUST	1	
2-4	51571H11A00H000	BOOT	1	
2-5	51575H11A00H000	BAND, BOOT	1	
2-6	35950H2F000H000	REFLEX REFLECTOR ASSY, FR SIDE	1	
3	51310H2F000H000	BRACKET COMP, UPPER	1	
4	09103H10002H000	BOLT, HEXAGON	1	
5	51352H2C001H000	BOLT	2	
6	51410H2F020H000	BRACKET COMP, UNDER	1	
7	01570-1235A-000	HEXAGON HEAD BOLT SET	2	
8	56211-45F10-000	HOLDER, HANDLE UPPER	2	
9	56221-45F10-000	HOLDER, HANDLE LOWER	2	
10	07130-0845A-000	HEXAGON SOCKET HEAD CAP SCREW	4	
11	51320H17100H000	BRACKET COMP	1	
12	09106H08005H000	BOLT, HEXAGON SOCKET HEAD	2	
13	51622H2A200H000	RACE, STEERING OUTER LOWER	1	
14	51644-45FA0-000	SEAL, STEERING, LOWER	1	
15	51611H2A201H000	RACE, STEERING INNER UPPER	1	
16	51612H2A200H000	RACE, STEERING INNER LOWER	1	
17	51621H2A200H000	RACE, STEERING OUTER, UPPER	1	

4

Fig. 39

Fig.39 STEERING STEM (P05-S400-0052)

REF. No.	PART No.	DESCRIPTION	Q' TY	REMARKS
18	51631-48H00-000	NUT, STEERING STEM	1	
19	51643H2A200H000	SEAL, STEERING DUST UPPER	1	
20	51610H2A200H000	BALL, STEERING STEEL UPPER	1	
21	51620H2A200H000	BALL, STEERING STEEL LOWER	1	



4

Fig. 40

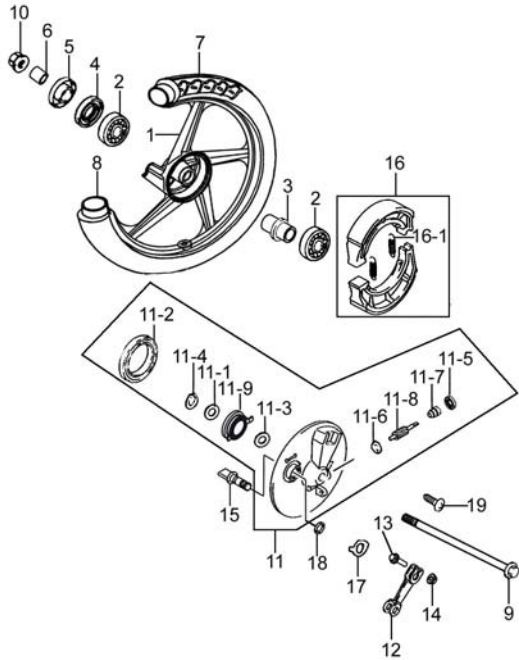


Fig.40 FRONT WHEEL (P05-S410-0043)

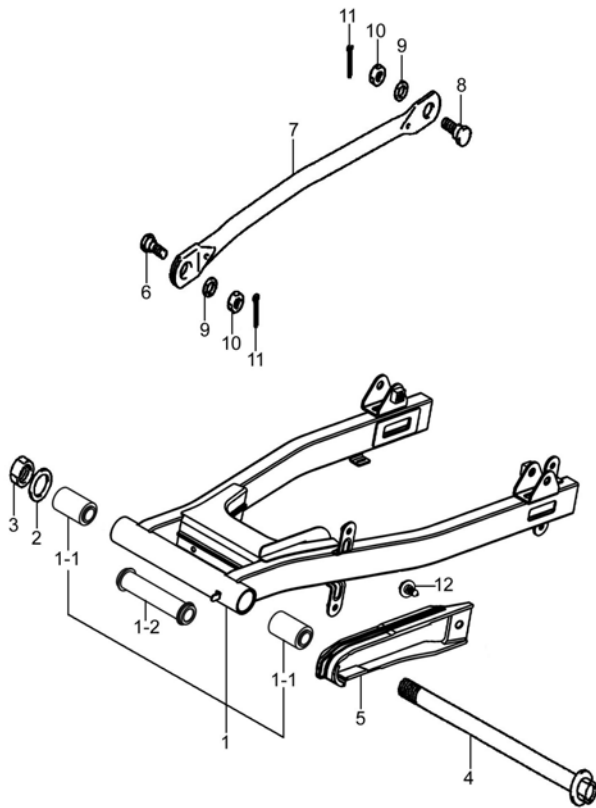
REF. No.	PART No.	DESCRIPTION	Q'TY	REMARKS
1	54110H11A10H801	WHEEL COMP, FRONT (SILVER)	1	
2	08133-6301B-000	BALL BEARING	2	
3	54750H11200H000	SPACER	1	
4	54742-45F00-000	SEAL, FRONT HUB	1	
5	54892-45F00-000	COVER, FRONT HUB DUST SEAL	1	
6	54741H2A000H000	SPACER, FRONT AXLE, R	1	
7	55100H11020H000	TIRE COMP, FRONT	1	
8	55200H11020H000	TUBE ASSY, WHEEL INNER	1	
9	54711-05310-000	AXLE, FRONT	1	
10	08319-3112A-000	U-NUT	1	
11	54200H12930H000	PANEL ASSY, FRONT BRAKE	1	
11-1	54613H11200H000	WASHER	1	
11-2	54267-36H00-000	SEAL, FRONT BRAKE PANEL OIL	1	
11-3	54614H11200H000	WASHER	1	
11-4	08331-31208-000	CIRCLIP	1	
11-5	54626H11200H000	OIL SEAL	1	
11-6	54623H11200H000	THRUST WASHER	2	
11-7	54632H12930H000	BUSH, SPEEDOMETER PINION	1	
11-8	54621H12930H000	PINION, SPEEDOMETER	1	
11-9	54610H12900H000	DRIVER COMP, SPEEDOMETER GEAR	1	
12	54451H11230H000	LEVER, FRONT BRAKE CAM	1	
13	01550-0633A-000	BOLT, HEXAGON HEAD FLANGE	1	
14	08316-1006A-000	NUT	1	
15	54441H12B10H000	CAM, FRONT BRAKE	1	
16	54400H7DY00H000	SHOE COMP, BRAKE	1	
16-1	55421-45F10-000	SPRING, BRAKE SHOE	2	
17	54492H11201H000	PLATE, FR BK LINING INDICATOR	1	
18	09280-14003-000	O-RING, REAR BRAKE CAM	1	
19	02132-0516A-000	SCREW	1	

4

Fig. 41

Fig.41 REAR SWINGING ARM (P05-S440-0025)

REF. No.	PART No.	DESCRIPTION	Q' TY	REMARKS
1	61019H17100H000	SWINGINGARM SET, REAR	1	
1-1	61200H45F00H000	SPACER, RR SWGARM PIVOT	2	
1-2	61280H2E100H000	SPACER COMP, RR SWGARM PIVOT	1	
2	08322-0114A-000	PLAIN WASHER	1	
3	08319-2114A-000	U-NUT	1	
4	61211H2E100H000	SHAFT, RR SWG ARM PIVOT	1	
5	61273H17100H000	BUFFER, CHAIN TOUCH DEFENSE	1	
6	09111-08012-000	BOLT, REAR TORQUELINK FRONT	1	
7	64311H11701H000	TORQUELINK, REAR	1	
8	09111-08013-000	BOLT	1	
9	09162-08008-000	LOCK WASHER, RR TORQUELINK	2	
10	09140H08001H000	NUT	2	
11	04111-2020A-000	COTTER PIN	2	
12	09409-06322-000	CLIP, LEG LOWER	1	



4

Fig. 42

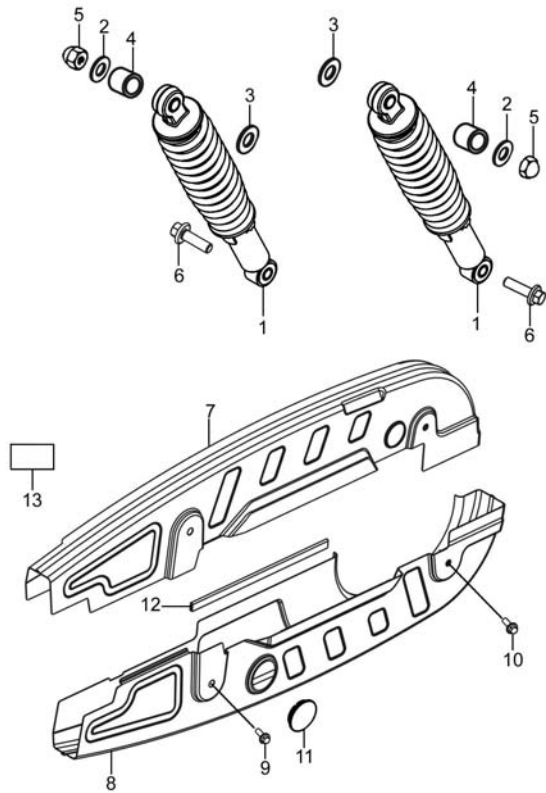


Fig.42 REARSHOCK ABSORBER (P05-S450-0026)

REF. No.	PART No.	DESCRIPTION	Q' TY	REMARKS
1	62100H17500H000	ABSORBER ASSY, REAR SHOCK	2	
2	09160H10001H000	WASHER, PLAIN	2	
3	09160-12090-000	WASHER, RR SHK ABS INNER	2	
4	09180H12013H000	SPACER	2	
5	09145H10003H000	NUT, CAP	2	
6	09103-10041-000	BOLT	2	
7	61310H17102H000	CASE COMP, CHAIN UPPER	1	
8	61320H17102H000	CASE COMP, CHAIN LOWER	1	
9	01560-0608B-000	HEXAGON HEAD BOLT	2	
10	01550-0612B-000	BOLT	2	
11	09250H34001H000	CAP	1	
12	61399H17100H000	MOLDING, CHAIN CASE	1	
13	44256H56010H000	SEPARATOR	3	

4



Fig. 43

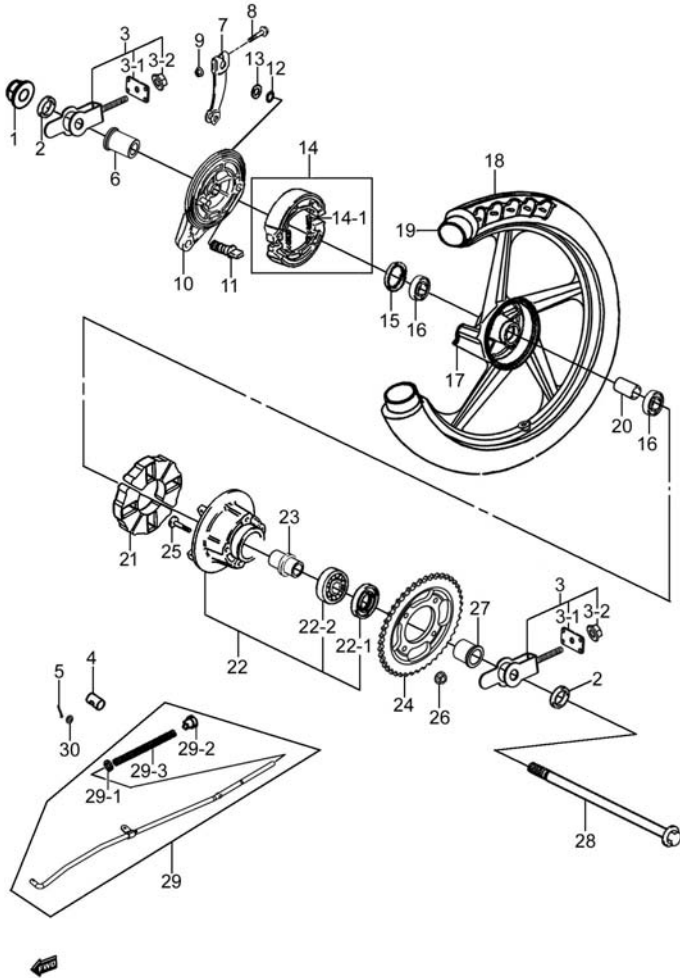


Fig.43 REAR WHEEL (P05-S460-0075)

REF. No.	PART No.	DESCRIPTION	Q' TY	REMARKS
1	08319-3114A-000	U-NUT	1	
2	64712H2C010H000	WASHER, CHAIN ADJUSTER	2	
3	61041H2C000H000	ADJUSTER SET, CHAIN	2	
3-1	61421H2C000H000	PLATE, CHAIN ADJUSTER GUIDE	1	
3-2	08319-3108A-000	NUT	1	
4	43321H11200H000	PIN	1	
5	04111-2015A-000	COTTER PIN	1	
6	64741H17100H000	SPACER, REAR AXLE, R	1	
7	64451H12B10H000	LEVER, REAR BRAKE CAM	1	
8	01550-0633A-000	BOLT, HEXAGON HEAD FLANGE	1	
9	08316-1006A-000	NUT	1	
10	64210H11000H000	PANEL COMP, REAR BRAKE	1	
11	64441H12B10H000	CAM, REAR BRAKE	1	
12	09280-14003-000	O-RING, REAR BRAKE CAM	1	
13	64492H11200H000	FINGER, REAR BRAKE	1	
14	54400H7DY00H000	SHOE COMP, BRAKE	1	
14-1	55421-45F10-000	SPRING, BRAKE SHOE	2	
15	64653H11A00H000	O-RING, REAR WHEEL	1	
16	08144-6302B-000	BALL BEARING	2	
17	64150H11A10H801	WHEEL COMP, REAR (SILVER)	1	
18	65100H17100H000	TIRE SET, RR	1	
19	65200H11020H000	TUBE ASSY, WHEEL INNER	1	
20	64916H11A00H000	SPACER, REAR HUB	1	
21	64651H11A00H000	ABSORBER, REAR HUB SHOCK	4	
22	64610H11A00H000	DRUM COMP, RR SPROCKET MOUNTING	1	
22-1	64612H11200H000	OIL SEAL	1	
22-2	08123-60047-000	BALL BEARING	1	
23	64733H11A00H000	RETAINER, REAR SPROCKET DRUM	1	
24	64511H17300H000	SPROCKET, REAR	1	

Fig. 43

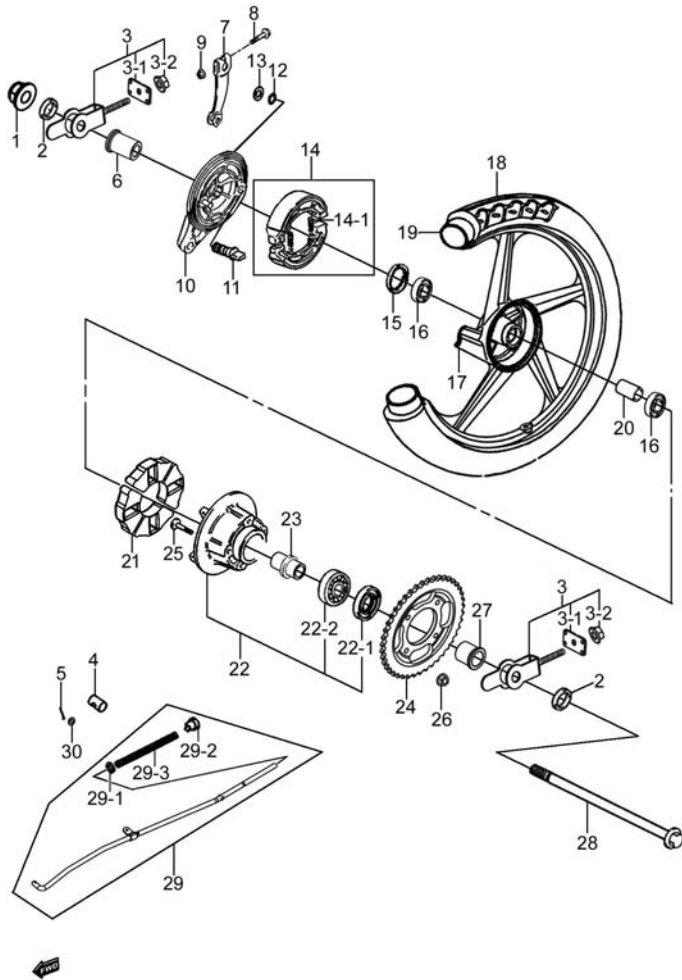


Fig.43 REAR WHEEL (P05-S460-0075)

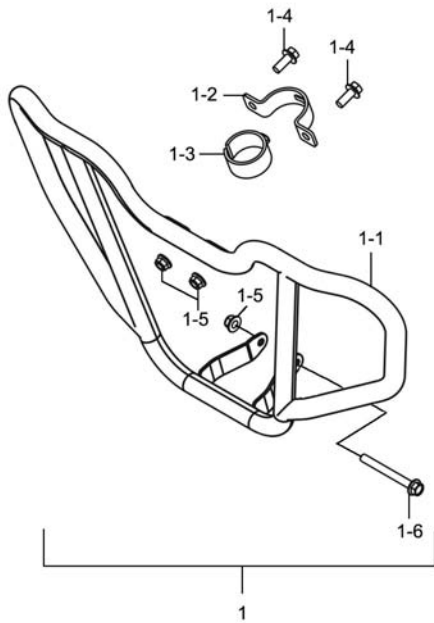
REF. No.	PART No.	DESCRIPTION	Q' TY	REMARKS
25	09119H08003H000	BOLT	4	
26	08319-3108A-000	NUT	4	
27	64614H17100H000	BUSH, RR SPROCKET DRUM	1	
28	64711H17100H000	AXLE, REAR	1	
29	43031H17100H000	ROD SET, REAR BRAKE	1	
29-1	08322-0106A-000	WASHER, PLAIN	1	
29-2	09150-06001-000	NUT, REAR BRAKE ROD ADJUSTER	1	
29-3	09440H09007H000	SPRING, COMPRESSION	1	
30	08322-0106A-000	WASHER, PLAIN	1	

4

Fig. 44

Fig.44 BUMPER COMP (P05-S470-0013)

REF. No.	PART No.	DESCRIPTION	Q' TY	REMARKS
1	94210H17Y00H000	BUMPER COMP, FRONT SET	1	
1-1	94210H17100H000	BUMPER COMP, FRONT	1	
1-2	94221H37200H000	PLATE, FRONT BUMPER UPPER FIT	1	
1-3	94231H37200H000	CUSHION, FRONT BUMPER	1	
1-4	01550-0820A-000	BOLTS, HEXAGON HEAD FLANGE	2	
1-5	08319-3108A-000	NUT	3	
1-6	09103-08016-000	BOLT, ENG MTG (L80)	1	



4



Fig. 45

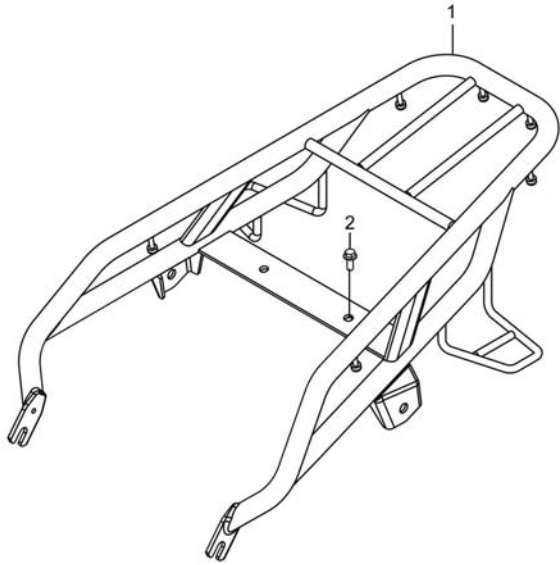


Fig.45 CARRIER (P05-S480-0031)

REF. No.	PART No.	DESCRIPTION	Q'TY	REMARKS
1	46310H17101H000	CARRIER COMP, REAR	1	
2	01550-0816A-000	HEXAGON BOLT WITH FLANGE	2	

4



PART NO.	FIG. NO. – REF. NO.	PART NO.	FIG. NO. – REF. NO.	PART NO.	FIG. NO. – REF. NO.	PART NO.	FIG. NO. – REF. NO.
00000		01550-0625A-000	35-7	07130-0520B-000	33-6-9	08319-3112A-000	40-10
		01550-0633A-000	40-13	07130-0610A-000	14-11	08319-3114A-000	43-1
		01550-0633A-000	43-8	07130-0620B-000	37-4	08321-2105B-000	33-5-4
		01550-0816A-000	45-2	07130-0825A-000	11-2	08321-2105B-000	33-6-10
		01550-0820A-000	44-1-4	07130-0845A-000	39-10	08322-0106A-000	43-29-1
01500-0620A-000	15-14	01550-1020A-000	28-13	08110-60060-000	14-2	08322-0106A-000	43-30
01500-0820A-000	15-18	01550-1025B-000	28-3	08110-62040-000	14-7	08322-0114A-000	41-2
01500-0825A-000	16-6	01550-1035A-000	28-11	08123-60047-000	43-22-2	08331-31129-000	15-15-6
01547-0525A-000	18-3	01550-1055A-000	11-4	08133-6301B-000	40-2	08331-31149-000	15-15-2
01547-0612A-000	03-3	01550-1060A-000	28-9	08140-60030-000	07-19	08331-31208-000	40-11-4
01547-0614A-000	03-10	01560-0608B-000	42-9	08144-6302B-000	43-16	08331-31209-000	14-1-5
01547-0620A-000	08-8	01570-1235A-000	39-7	08211-15251-000	14-1-3	08331-31209-000	14-5-8
01547-0620A-000	01-5	01580-0616A-000	31-2	08211-15301-000	14-5-14	08361-3506A-000	20-2
01547-0620A-000	04-19	02112-0406A-000	29-3	08211-20271-000	14-5-2	09100-06026-000	03-12
01547-0625A-000	04-4	02112-0418A-000	15-20	08310-0005B-000	33-5-7	09100H05004H000	18-2
01547-0628A-000	04-21	02112-1520A-000	20-9	08310-0005B-000	33-6-7	09100H06003H000	07-16
01547-0630A-000	17-2	02122-0512A-000	05-9	08310-0006A-000	01-22	09103-08016-000	44-1-6
01547-0640A-000	04-5	02122-0616A-000	07-7	08310-0006A-000	21-2	09103-08527-000	25-18
01547-0645A-000	04-7	02122-0630A-000	12-2	08316-1005A-000	31-6	09103-10041-000	42-6
01547-0650A-000	03-5	02132-0516A-000	40-19	08316-1006A-000	29-12	09103H08010H000	03-17
01547-0650A-000	04-11	02142-0512A-000	31-5	08316-1006A-000	40-14	09103H08011H000	01-16
01547-0660A-000	03-6	02142-0516A-000	10-1-5	08316-1006A-000	43-9	09103H08011H000	26-4
01547-0665A-000	03-21	02142-0616A-000	38-4	08316-1010A-000	23-5	09103H10002H000	39-4
01547-0670A-000	04-12	02142-0620A-000	24-5	08319-2114A-000	41-3	09103H10003H000	03-18
01550-0610A-000	26-9	03241-0512A-000	38-7	08319-3108A-000	01-17	09103H10013H000	26-6
01550-0610A-000	31-8	03241-0512B-000	35-10	08319-3108A-000	26-5	09106H08005H000	39-12
01550-0612A-000	10-3	03541-0416A-000	25-8	08319-3108A-000	03-19	09108H06014H000	01-19
01550-0612A-000	20-5	03541-0416A-000	38-8	08319-3108A-000	43-3-2	09111-08012-000	41-6
01550-0612B-000	42-10	03541-0512A-000	35-9	08319-3108A-000	43-26	09111-08013-000	41-8
01550-0616A-000	10-2	03541-0616B-000	25-10	08319-3108A-000	44-1-5	09116-06084-000	29-6
01550-0616A-000	24-7	04111-2015A-000	43-5	08319-3110A-000	11-8	09118H06002H000	34-2
01550-0620A-000	01-20	04111-2020A-000	41-11	08319-3110A-000	26-7	09119H08003H000	43-25
01550-0620A-000	34-3	04111-2525A-000	27-4	08319-3110A-000	27-12	09128-06004-000	20-3
01550-0622A-000	13-2-1	04221-04109-000	15-9	08319-3110A-000	28-10	09128H06001H000	15-10
01550-0625A-000	20-7	07130-0520B-000	33-5-9	08319-3110A-000	03-20	09128H06006H000	01-8

5

PART NO.	FIG. NO. – REF. NO.	PART NO.	FIG. NO. – REF. NO.	PART NO.	FIG. NO. – REF. NO.	PART NO.	FIG. NO. – REF. NO.
09128H06010H000	08-6-1	09180H06025H000	34-4	09280H35000H000	12-3	09440H09003H000	32-15
09135H08004H000	08-2	09180H06037H000	37-3	09280H35001H000	03-15	09440H09007H000	43-29-3
09135H12001H000	16-3	09180H12013H000	42-4	09280H50003H000	01-14	09440H15002H000	15-15-5
09136-05051-000	22-3	09181-35108-000	05-7	09280H63001H000	04-18	09443-19020-000	27-16
09136H04003H000	34-10	09181H12003H000	07-18	09280H75001H000	01-3	09443H14004H000	27-7
09139-06048-000	25-15	09181H12004H000	16-1-12	09283H10002H000	07-1	09443H16007H000	28-15
09139-06167-000	11-1-2	09181H16200H000	15-15-1	09283H14001H000	15-16	09448H15001H000	04-25
09139H06007H000	32-4	09181H17001H000	07-10	09283H16001H000	16-2	09448H18001H000	15-13
09140H08001H000	41-10	09181H17240H000	14-5-10	09283H20007H000	14-6	09448H22001H000	07-17
09145H10003H000	42-5	09181H20001H000	16-1-6	09287H09001H000	32-16	09448H48003H000	16-1-2
09148-05077-000	24-2	09181H20270H000	14-1-10	09320-03004-000	30-7	09471-12077-000	21-1-6
09148-05077-000	34-5	09205H03001H000	04-26	09320-08047-000	24-3	09471-12081-000	22-1-3
09148-05077-000	35-2	09206H08004H000	04-3	09320-08047-000	35-4	09471-12128-000	24-1-2
09148-05077-000	38-6	09206H10007H000	02-4	09320-08513-000	30-4	09471-12177-000	23-1-2
09150-06001-000	43-29-2	09206H10007H000	03-1-1	09320H07001H000	35-8	09471-12177-000	23-2-2
09150H06001H000	32-13	09206H10007H000	04-10	09329-10001-000	34-11	09471-12177-000	23-3-2
09160-06027-000	35-6	09206H10008H000	01-9	09380H15001H000	16-1-11	09471-12177-000	23-4-2
09160-06129-000	21-3	09209H12004H000	32-14	09380H19001H000	16-1-9	09471H12001H000	22-1-2
09160-06164-000	11-1-3	09229H03003H000	26-11	09381H14001H000	05-4	09482H00002H000	01-15
09160-12090-000	42-3	09247-12104-000	04-13	09401-11102-000	10-5	09491H11200H000	09-1-10
09160H08003H000	01-12	09250H34001H000	42-11	09401-13409-000	10-6	09494H12700H000	09-1-26
09160H08011H000	08-3	09259-26023-000	04-15	09401H08302H000	29-11	09800H20027H000	34-6
09160H10001H000	42-2	09261H10005H000	06-1-4	09401H13201H000	10-1-8	09816-00059-000	34-7
09160H10019H000	11-5	09262H15010H000	14-3	09404-06030-000	24-1-6		
09160H16004H000	05-12	09262H17001H000	13-8	09404-06030-000	25-7		
09160H17001H000	27-3	09262H35005H000	05-6	09407-12402-000	25-3		
09161H06004H000	11-1-5	09263H15002H000	14-8	09407-14403-000	25-2		
09162-08008-000	41-9	09263H23000H000	15-11	09407-18402-000	25-4		
09168-06023-000	01-6	09280-14003-000	40-18	09408-00021-000	09-2	10000	
09168-12002-000	04-14	09280-14003-000	43-12	09409-06322-000	41-12		
09168H06002H000	11-1-6	09280-22008-000	04-16	09420H04002H000	05-5-1	11110H3E0B0H000	01-1
09169-06071-000	38-5	09280H11001H000	16-4	09421H04003H000	05-15	11121H2F000H000	01-2
09180-06067-000	29-7	09280H18002H000	04-23	09440H04013H000	06-1-6	11123H3F000H000	01-4
09180H06018H000	24-4	09280H19001H000	15-21	09440H04030H000	15-6	11141H3F000H000	01-10
09180H06022H000	35-5	09280H34002H000	01-21	09440H07002H000	03-9	11142H35000H000	08-6-2

PART NO.	FIG. NO. – REF. NO.	PART NO.	FIG. NO. – REF. NO.	PART NO.	FIG. NO. – REF. NO.	PART NO.	FIG. NO. – REF. NO.
11165H35010H000	01-11	12741H35010H000	07-15	13267H2D030H000	09-1-5	16514H3D000H000	05-8-1
11167H12000H000	01-7	12760H35020H000	08-5	13268H33000H000	09-1-6	16520H21D01H000	03-13
11175H3F000H000	01-13	12771H35000H000	08-4	13270H12900H000	09-1-24	16520H33000H000	05-8-2
11210H3E030H0B0	02-1	12811H3F000H000	08-1	13279H36900H000	09-1-7	16521H33000H000	05-8-2-2
11241H36000H000	02-5	12830H36Y00H000	08-6	13285H2C010H000	09-1-31	16531H33000H000	05-8-2-4
11243H35000H000	02-2	12837H35000H000	08-7	13295H21D00H000	09-1-18	16532H33000H000	05-8-2-1
11244H35000H000	02-3	12840H3D000H000	07-3	13299H17510H000	09-1-27	16541H33001H000	03-14
11300H3FY11H000	03-1	12842H3D000H000	07-3-1	13351H2D030H000	09-1-8	16542H36000H000	03-16
11340H2F100H000	04-1	12852H33000H000	07-3-2	13370H21D00H000	09-1-21	16551H33000H000	05-8-2-3
11351H2F100H000	04-8	12861H3D000H000	07-4	13383H17510H000	09-1-3	16561H33000H000	05-10
11360H17100H000	04-20	12862H35022H000	07-6	13385H17510H000	09-1-9	16581H33000H000	13-5
11421H2D000H000	04-6	12871H3D000H000	07-5	13388H12700H000	09-1-20		
11441H36031H000	04-17	12911H3E002H000	07-8	13389H12700H000	09-1-17		
11481H3F000H000	03-4	12912H3E002H000	07-9	13432H33000H000	09-1-16		
11482H35000H000	04-2	12921H3F000H000	07-12	13480H2G200H000	09-1-30		
11483H3F000H000	04-9	12922H3F000H000	07-11	13551H2C010H000	09-1-4		
11971H3F000H000	04-22	12931H3E000H000	07-13	13573H12700H000	09-1-2		
12111H3E010H0B0	05-1	12932H50100H000	07-14	13683H17310H000	09-1-33	20000	
12140H3E030H000	05-2	13111H17500H000	01-18	13684H17310H000	09-1-25		
12151H3E000H000	05-3	13112H22500H000	01-23	13700H17501H000	10-1		
12200H3F030H000	05-5	13113H22502H000	01-24	13723H17300H000	10-1-7		21111H3F010H000
12543H36010H000	03-8	13170H2C002H000	10-1-3	13741H17300H000	10-1-10	21113H3F000H000	05-14
12545H36010H000	03-7	13200H17510H000	09-1	13780H17Y01H000	10-1-4	21200H3F010H000	13-1
12620H36001H000	06-2	13224H2A000H000	09-1-29	13810H17300H000	10-1-6	21346H33000H000	13-4
12623H3E020H000	06-3	13225H11200H000	09-1-19	13851H17500H000	10-4	21346H3E000H000	05-11
12630H33001H000	06-1	13247H33000H000	09-1-14	13863H22500H000	10-1-9	21410H3E050H000	13-2
12631H33000H000	06-1-2	13251H11A10H000	09-1-11	13891H17300H000	10-1-1	21411H3E000H000	13-2-7
12632H33001H000	06-1-3	13252H33000H000	09-1-12	14036H17500H000	11-1	21413H3D000H000	13-2-3
12633H33000H000	06-1-5	13253H33000H000	09-1-15	14181H11200H000	11-3	21441H33020H000	13-2-5
12642H33000H000	06-1-1	13254H21D00H000	09-1-22	14413H28101H000	11-7	21451H3E020H000	13-2-6
12651H36000H000	06-6	13255H11200H000	09-1-1	14414H28100H000	11-6	21462H3E000H000	13-2-4
12681H36000H000	06-4	13258H2C010H000	09-1-32	14414H37200H000	11-1-4	21471H35000H000	13-2-2
12683H36000H000	06-5	13261H12700H000	09-1-28	14781H17100H000	11-1-1	21481H33000H000	13-3
12691H36000H000	06-7	13262H11200H000	09-1-13	16052H3D000H000	05-8	23121H3D000H000	13-7
12710H3D021H000	07-2	13263H11200H000	09-1-23	16400H3D000H000	12-1	23131H3D000H000	13-6

5

5

PART NO.	FIG. NO. – REF. NO.	PART NO.	FIG. NO. – REF. NO.	PART NO.	FIG. NO. – REF. NO.	PART NO.	FIG. NO. – REF. NO.
23270H3J000H000	04-24	26211H3E000H000	16-1-4	32115H35000H000	03-2	35630H11A00H000	23-2-1
23285H35000H000	04-27	26221H35000H000	16-1-1	32491H33010H000	18-6	35630H11A00H000	23-3-1
24102H3E030H000	14-1	26222H35000H000	16-1-3	32800H05523H000	20-4	35710H17100H000	24-1
24103H3E061H000	14-5	26225H35000H000	16-1-10	32900H2A401H000	20-6	35712H17100H000	24-1-1
24121H3F000H000	14-1-1	26226H36000H000	16-1-8	33410H17300H000	20-8	35716H17100H000	24-6
24131H3D001H000	14-5-1	26241H35000H000	16-1-5	33510-04H10-000	20-8-1	35726H17100H000	24-1-3
24210H3F000H000	14-1-9	26251H35000H000	16-1-7	33541H05500H000	20-8-2	35764H2C000H000	35-11
24221H3E010H000	14-1-2	26261H3E000H000	14-5-15	33542H05500H000	20-8-3	35764H2E000H000	24-1-4
24231H3E000H000	14-1-8	26263H35000H000	14-5-13	33620H17400H000	19-1	35765H2E000H000	24-1-5
24232H33000H000	14-1-6	26300H22510H000	16-5	33810H17101H000	17-1-2	35950H2F000H000	39-1-6
24232H33000H000	14-5-7	26352-01000-000	16-5-1	33860H17100H000	19-2	35950H2F000H000	39-2-6
24241H3E010H000	14-1-7	27511H36010H000	14-9	34100H17301H000	21-1	35970H2C001H000	24-8
24251H3E010H000	14-1-4	27521H33010H000	14-10	34111H17300H000	21-1-2	36610H17500H000	25-1
24311H3E000H000	14-5-11	27600H3D000H118	14-4	34150H17101H000	21-1-1	36618H2A000H000	25-13
24314H35000H000	14-5-12	27620H3D000H000	14-4-1	34152H17100H000	21-1-3	36618H79201H000	25-12
24321H3E000H000	14-5-3			34173H17100H000	21-1-5	36619H17100H000	25-9
24322H3E000H000	14-5-4			34173H17300H000	21-1-4	36651-12F10-000	25-11
24331H3E010H000	14-5-9	30000		34810H17300H000	29-13	36651-26H60-000	25-6
24341H3E000H000	14-5-6			34910H12E01H000	21-4	36651-45F10-000	32-12
24351H3E010H000	14-5-5			34938H12600H000	32-11	36720H2C100H000	25-1-1
24741H36000H000	03-11		31100H17101H000	17-1	35100H17100H000	22-1	37011H1710AH000
25211H3D000H000	15-1	31133H2A200H000	17-1-1-1	35121H17100H000	22-1-1	37100H17100H000	25-14
25231H3D000H000	15-2	31135H36000H000	17-1-1-2	35157H22501H000	34-12	37146H17100H000	25-20
25241H3D000H000	15-3	31153H22500H000	17-1-3	35157H37200H000	10-1-2	37200H17500H000	33-1
25311H36010H000	15-5	31156H22500H000	17-1-4	35171H7H000H000	22-1-4	37400H2E030H000	33-2
25314H3E000H000	15-7	31156H36000H000	17-1-7	35174H7J000H000	22-1-5	37571H05503H000	33-2-1
25350H35000H000	15-12	31175H36000H000	17-1-1	35194H51000H000	22-2	37720H22500H000	15-19
25381H3F000H000	15-8	31264H36000H000	17-1-5	35601H11A01H000	23-1	37740H2J000H000	25-16
25411H35000H000	15-4	31281H36000H000	17-1-6	35602H11A01H000	23-2	38500-055E0-000	25-17
25500H36020H000	15-15	31800-49110-000	20-1	35603H11A01H000	23-3	38610H11A30H000	23-8
25510H36020H000	15-15-4	32100H2F300H000	18-1	35604H11A01H000	23-4	40000	
25518H35000H000	15-15-3	32101H22500H000	18-1-1	35610H11A00H000	23-1-1		
25600H17100H000	15-17	32102H2F300H000	18-1-2	35610H11A00H000	23-4-1		
25652H16500H000	15-17-1	32111H33000H000	18-5	35616H11A01H000	23-6		
26210H3E000H000	16-1	32113H35000H000	18-4	35616H17500H000	23-7		

PART NO.	FIG. NO. – REF. NO.	PART NO.	FIG. NO. – REF. NO.	PART NO.	FIG. NO. – REF. NO.	PART NO.	FIG. NO. – REF. NO.
41100H17Y10H000	26-1	44200H11750H000	29-2	51156H12710H000	39-2-2	54613H11200H000	40-11-1
41560H17300H000	26-8	44256H56010H000	42-13	51173H12710H000	39-1-3	54614H11200H000	40-11-3
41569H05610H000	28-5-1	44300H2A240H000	29-9	51173H12710H000	39-2-3	54621H12930H000	40-11-8
41569H05610H000	28-7-1	44421H17300H000	29-10	51310H2F000H000	39-3	54623H11200H000	40-11-6
41991H17100H000	26-2	44541H11200H000	29-4	51320H17100H000	39-11	54626H11200H000	40-11-5
41992H17100H000	26-3	44542-36H10-000	29-8	51352H2C001H000	39-5	54632H12930H000	40-11-7
42100H17100H000	27-13	44542-38300-000	29-5	51410H2F020H000	39-6	54711-05310-000	40-9
42112H2D002H000	27-15	45100H17100H000	37-1	51571H11A00H000	39-1-4	54741H2A000H000	40-6
42211H17100H000	27-14	45147-12FB0-000	37-1-4	51571H11A00H000	39-2-4	54742-45F00-000	40-4
42241-26H10-000	27-10	45148-20G00-000	37-1-2	51575H11A00H000	39-1-5	54750H11200H000	40-3
42278-26H00-000	11-1-7	45148-33G00-000	37-1-3	51575H11A00H000	39-2-5	54892-45F00-000	40-5
42310-45F20-000	27-9	45160H17100H000	37-1-1	51610H2A200H000	39-20	55100H11020H000	40-7
42322H2A200H000	28-4	45511H17100H000	38-1	51611H2A201H000	26-1-1	55200H11020H000	40-8
42341-36H00-000	27-11	45512H17100H000	38-2	51611H2A201H000	39-15	55421-45F10-000	40-16-1
43031H17100H000	43-29	45513H17100H000	38-3	51612H2A200H000	26-1-2	55421-45F10-000	43-14-1
43110H17501H000	27-1	46310H17101H000	45-1	51612H2A200H000	39-16	56111H17500H000	32-1
43115H36600H000	27-5	46311H2A200H000	28-14	51620H2A200H000	39-21	56171H2F000H000	32-3
43116H22500H000	27-6	47111H17100H000	30-2	51621H2A200H000	39-17	56211-45F10-000	39-8
43125H2A203H000	27-2	47211H17100H000	30-1	51622H2A200H000	39-13	56221-45F10-000	39-9
43141H17100H000	28-16	47312H02100H000	30-3	51631-48H00-000	39-18	56270H17100H000	32-2
43142H21302H000	27-8	47432H17100H000	34-8	51643H2A200H000	39-19	56272H2G101H000	37-2
43321H11200H000	43-4			51644-45FA0-000	39-14	56321H17101H000	35-3
43501H17101H000	28-1			51881H17100H000	25-5	56500H17101H000	32-5
43502H17100H000	28-2			53110H17101H000	31-1	56600H17101H000	32-6
43551H17100H000	28-1-1			53115H17102H000	31-3	57110-28G10-000	33-4
43551H17100H000	28-2-1			53116H11200H000	31-4	57211-45FB0-000	33-3
43610H17100H000	28-5			54110H11A10H801	40-1	57300H17100H000	33-6
43618H2A200H000	28-6	50000		54200H12930H000	40-11	57311H12900H000	33-6-1
43631H12600H000	28-17			54267-36H00-000	40-11-2	57421H12900H000	33-6-2
43710H17100H000	28-7			54400H7DY00H000	40-16	57431H12910H000	33-5-8
43718H2A200H000	28-8	51103H17101H000	39-1	54400H7DY00H000	43-14	57431H12910H000	33-6-8
43829H17100H000	28-12	51104H17101H000	39-2	54441H12B10H000	40-15	57441H12910H000	33-6-5
44011H17302HF01	29-1	51153H12710H000	39-1-1	54451H11230H000	40-12	57441H2J000H000	33-5-5
44011H17302HF02	29-1	51153H12710H000	39-2-1	54492H11201H000	40-17	57442H12910H000	33-5-6
44011H17302HF03	29-1	51156H12710H000	39-1-2	54610H12900H000	40-11-9	57442H12910H000	33-6-6

5

PART NO.	FIG. NO. – REF. NO.	PART NO.	FIG. NO. – REF. NO.	PART NO.	FIG. NO. – REF. NO.
57470H12900H000	33-6-4	64210H11000H000	43-10	94411H17100H541	35-1
57500H17111H000	33-5	64311H11701H000	41-7	94411H17100H608	35-1
57511H17100H000	33-5-1	64441H12B10H000	43-11	99011H17502H000	36-2
57512H12900H000	33-5-3	64451H12B10H000	43-7		
57512H12910H000	33-6-3	64492H11200H000	43-13		
57621H17100H000	33-5-2	64511H17300H000	43-24		
58110H17100H000	32-7	64610H11A00H000	43-22		
58200H17100H000	32-8	64612H11200H000	43-22-1		
58300H17300H000	32-9	64614H17100H000	43-27		
58410H17300H000	32-10	64651H11A00H000	43-21		
58621H17101H000	31-7	64653H11A00H000	43-15		
		64711H17100H000	43-28		
		64712H2C010H000	43-2		
		64733H11A00H000	43-23		
		64741H17100H000	43-6		
		64916H11A00H000	43-20		
		65100H17100H000	43-18		
		65200H11020H000	43-19		
		68135H17100HTA1	30-6		
		68136H17100HTA1	30-5		
60000					
61019H17100H000	41-1	68170H12E00H000	35-12		
61041H2C000H000	43-3	68311H56110H000	26-10		
61200H45F00H000	41-1-1	68319H22510H000	36-1		
61211H2E100H000	41-4	68332H12911H000	36-3		
61273H17100H000	41-5	68391H05700H000	36-4		
61280H2E100H000	41-1-2				
61310H17102H000	42-7				
61320H17102H000	42-8	90000			
61399H17100H000	42-12				
61421H2C000H000	43-3-1				
62100H17500H000	42-1	94210H17100H000	44-1-1		
63112H17400H000	34-1	94210H17Y00H000	44-1		
63113H17400H000	34-13	94221H37200H000	44-1-2		
63152H17300H000	34-9	94231H37200H000	44-1-3		
64150H11A10H801	43-17	94411H17100H104	35-1		

Haojue EH150 PARTS CATALOGUE

1st Edition

Published in 2020.12

DACHANGJIANG GROUP CO.,LTD.

No.5, Jiandabei Rd., Jiangmen City, Guangdong Province, P.R.China

Tel: 86-750-3288999 Fax: 86-750-3230989 Code: 529000

DACHANGJIANG GROUP COPYRIGHT POSSESSION.

DACHANGJIANG GROUP CO. , LTD.