

Haojue

PARTS CATALOGUE

HJ125-8

PREFACE

This catalogue lists the spare parts used for the following model. Please do refer to the parts catalogue and indicate the parts number and the name listed in this catalogue correctly when you need to replace the spare parts.

Design Code	Factory Reference No. (Abbr. form in the catalogue)	Engine Reference No.	Engine Cad No.
HJ125-8	FA3033D360-XXE97	EG33D49-E05	10091H33077H000

一、 How to place an order for spare parts?

1. Required document:

The number must be provided as follow when order the spare parts:

- (a) The Engine parts: parts number and the Engine number
- (b) The Body parts: parts number and the Frame number

2. Revision

The Revised Version would be published at a suitable time when the parts Catalogue needed to be revised or renewed. In this case, the edition number would be marked on the cover. The parts would have some difference because our products are improved continuously and the modified parts no. will not be informed before the new edition published.

二、 How to use the parts catalogue?

1. Size

The unit of the parts' size indicated in the catalogue is 'mm', for example:

Parts name	Description
Bolt 6×12	Diameter 6mm, Length 12mm

O Ring D: 3.0, ID: 29.5	Section diameter 3mm, inner diameter 29.5mm
Bearing 35×72×17	Inner diameter 35mm, Outer diameter 72mm, Thickness 17mm

2. Abbr.

The meaning of the Abbreviations in the catalogue are as the followings:

D: Section diameter NT: Number of Teeth L: Length ID: Inner diameter W: Width

OPT: Optional T: Thickness OD: Outer diameter OS: Over size

STD: Standard US: Under size LH: Left hand side RH: Right hand side

3. Assy and the inner parts

The part number with a hyphen '-' in the front means this part could be supplied with the Assy (or the comp.), also could be supplied seperately.

For example:

Item 1 CYLINDER HEAD ASSY

Item1-1 PIN,CAMSHAFT COVER

That means Item1-1 can be supplied with Item 1 and aslo can be supplied seperately.

4. The illustrations in the catalogue are just for the purpose to distinguish the parts. There might be some discrepancies between the illustrations and the real parts.. Furthermore, the illustrations can not be used for the assembling purpose. When assembling, pls use the Service Manual of the relative models.

5. The instruction for the color parts

The catalogue lists are being supervised by color code.

For example: Assy,Fuel Tank 44100H22000HF01 F01 is the colour code and means "RED".

When place an order for the color parts, please use the correct parts number (with the color code), based on the compound color sheet of the models.

This catalogue is edited according to the datas before 2022-4-28. The modification after that time should refer to the latest SPS(Spare Parts Modification notice).

HJ125-8 COLOR TABLE FA3033D360-XXE97 5 COLOR STYLES

REF. NO.	DESCRIPTION	PART NO.	a01 RED	a03 MAUVE	a04 BLUE	a06 BLACK	a07 GREY	REMARKS
1	FUEL TANK SET	44011H308B0H000	F01	F03	F04	F06	F07	
2	TAPE, FUEL TANK	68110H30120H000	RG9	RH2	RH6	RH1	UR5	NOT SUPPLY
3	COVER SET, FRAME, R	47011H30130H000	F01	F03	F04	F06	F07	
4	COVER, FRAME, R	47111H30100H000	102	701	608	501	819	NOT SUPPLY
5	TAPE SET, FRAME COVER, R	68141H30120H000	RG9	RH2	RH6	RH1	UR5	
6	COVER SET, FRAME, L	47021H053D0H000	F01	F03	F04	F06	F07	
7	COVER, FRAME, L	47211-05301-000	102	701	608	501	819	NOT SUPPLY
8	TAPE SET, FRAME COVER, L	68142H30120H000	RG9	RH2	RH6	RH1	UR5	
9	NAME TAPE, FRAME COVER	68130H30110H000	MP7	MP7	MP7	MP7	MP7	

INFORMATION ILLUSTRATION INDEX

1

ENGINE & TRANSMISSION

2

ELECTRICAL

3

BODY

4

PARTS NUMBER INDEX

5

Fig. 1 CYLINDER HEAD&CYLINDER HEAD COVER (P03-S010-0016)

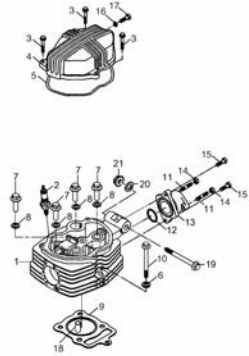


Fig. 2 CYLINDER (P03-S020-0008)

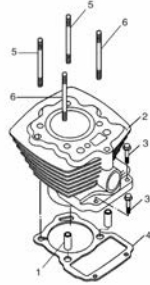


Fig. 3 CRANKCASE (P03-S030-0029)

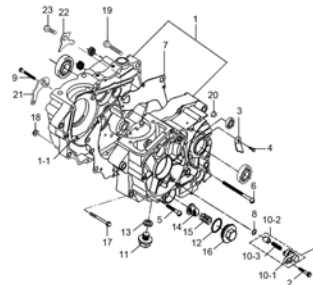


Fig. 4 CRANKCASE COVER (P03-S040-0059)

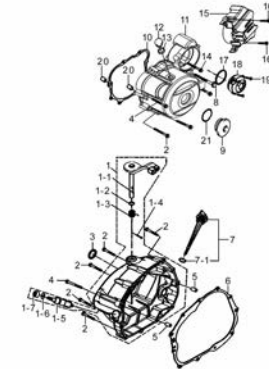


Fig. 5 CRANKSHAFT (P03-S050-0012)

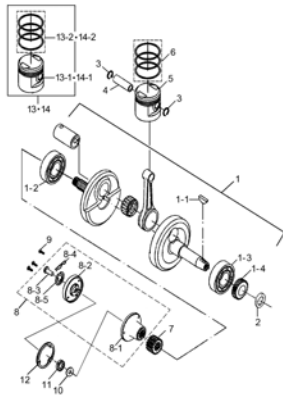


Fig. 6 STARTER CLUTCH (P03-S060-0013)

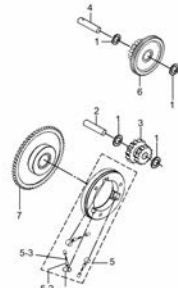


Fig. 7 CAMSHAFT-VALVE (P03-S070-0022)

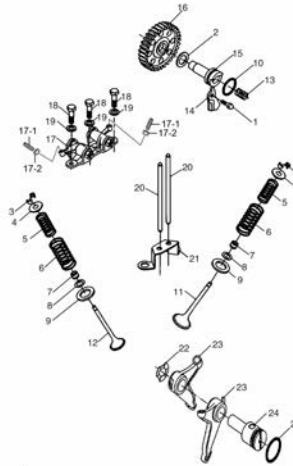
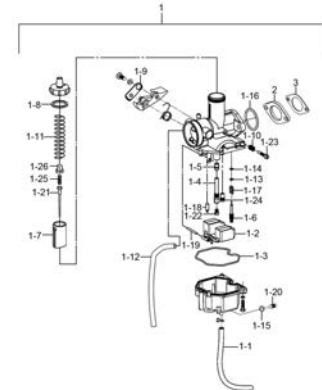


Fig. 8 CARBURETOR (P03-S090-0018)



1

Fig. 9 AIR CLEANER (P03-S100-0006)

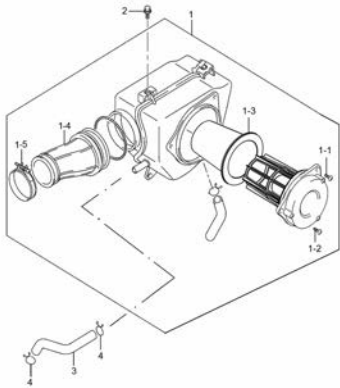


Fig. 10 MUFFLER (P03-S110-0011)

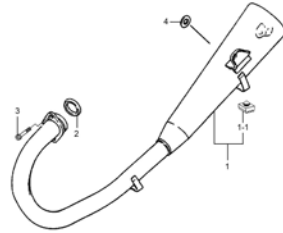


Fig. 11 2ND AIR VAVLE (P03-S120-0010)

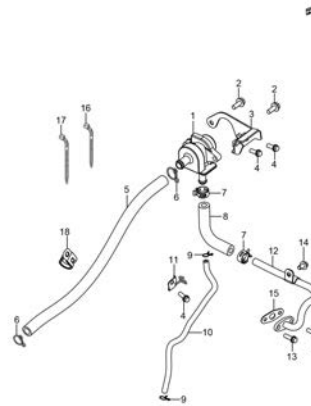


Fig. 12 OIL PUMP (P03-S130-0003)

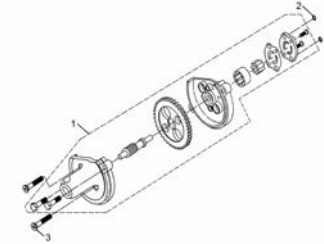


Fig. 13 CLUTCH (P03-S140-0010)

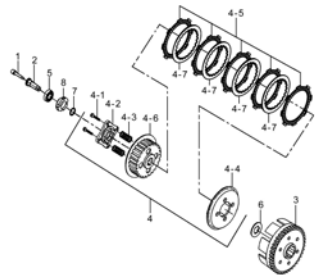


Fig. 14 TRANSMISSION (P03-S150-0010)

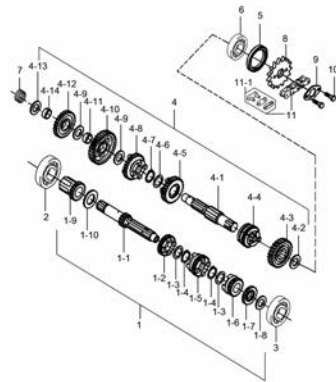


Fig. 15 GEAR SHIFTING (P03-S160-0015)

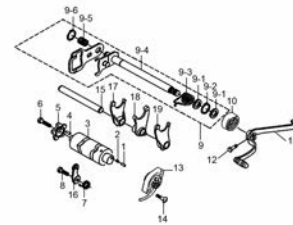
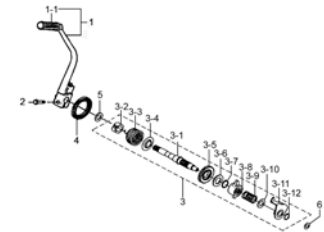


Fig. 16 KICK STARTER (P03-S165-0002)



1

Fig. 25 WIRING HARNESS (P03-S250-0046)

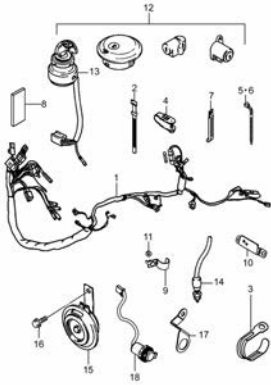


Fig. 26 FRAME (P03-S260-0047)

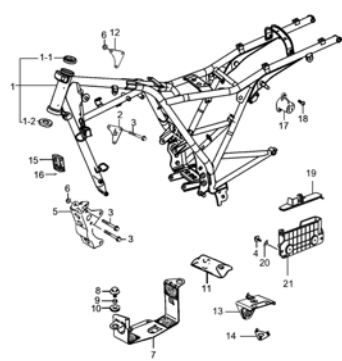


Fig. 27 STAND (P03-S270-0021)

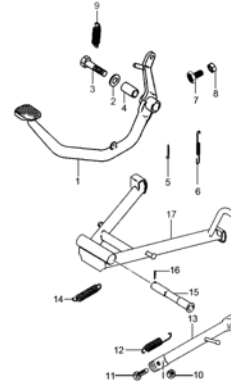


Fig. 28 FOOTREST (P03-S280-0021)

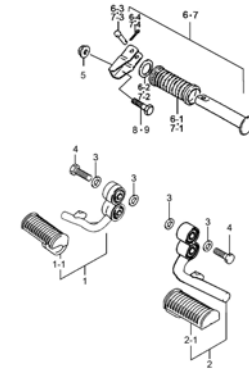


Fig. 29 FUEL TANK (P03-S290-0082)

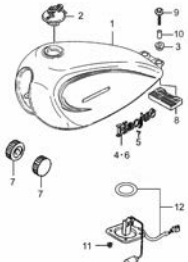


Fig. 30 FUEL COCK (P03-S300-0009)

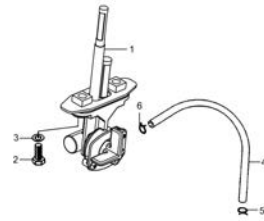


Fig. 31 FRAME COVER (P03-S310-0089)

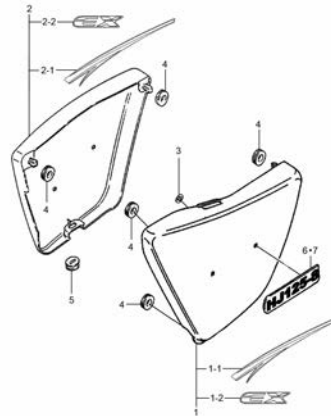


Fig. 32 FRONT FENDER (P03-S320-0022)

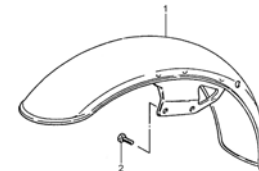


Fig. 33 HANDLEBAR (P03-S330-0041)

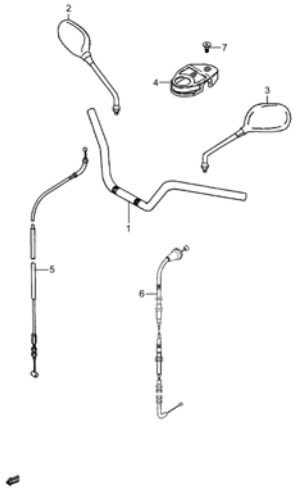


Fig. 34 HANDLE SWITCH (P03-S340-0032)

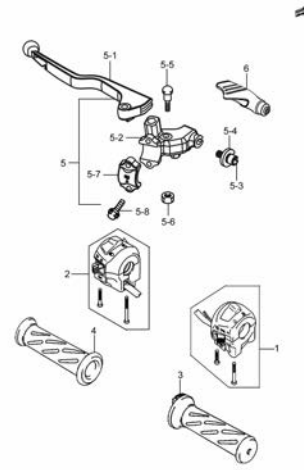


Fig. 35 REAR FENDER (P03-S350-0018)

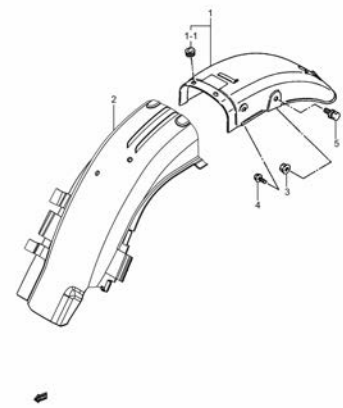


Fig. 36 LABEL (P03-S370-0038)

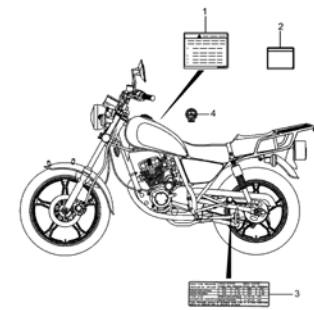


Fig. 37 SEAT (P03-S380-0013)

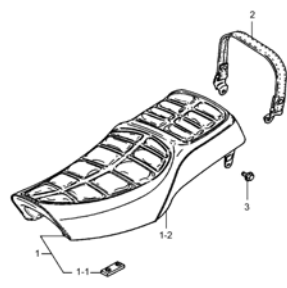


Fig. 38 STEERING STEM (P03-S400-0046)

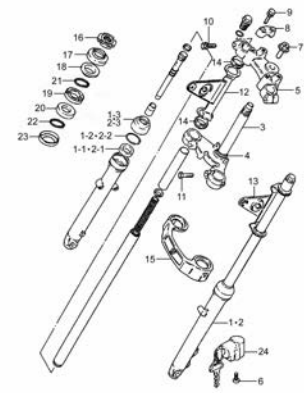


Fig. 39 FRONT WHEEL (P03-S410-0032)

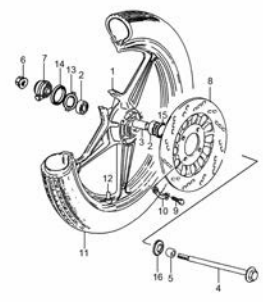
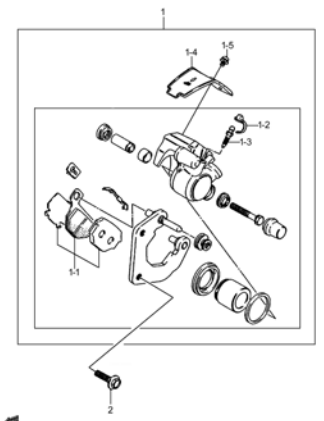


Fig. 40 FRONT CALIPER (P03-S420-0011)



1

Fig. 41 FRONT BRAKE CYLINDER (P03-S430-0012)

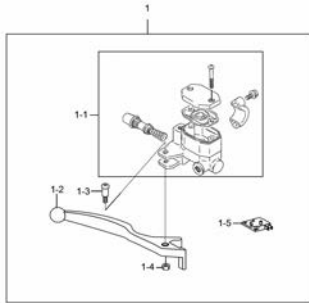


Fig. 42 HOSE, FRONT BRAKE (P03-S435-0015)

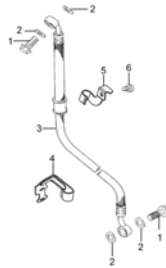


Fig. 43 REAR SWINGING ARM (P03-S440-0008)

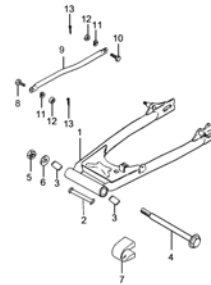


Fig. 44 REARSHOCK ABSORBER (P03-S450-0025)

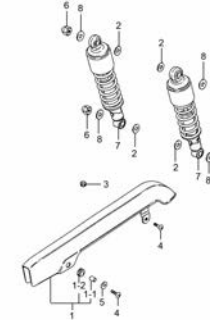


Fig. 45 REAR WHEEL (P03-S460-0036)

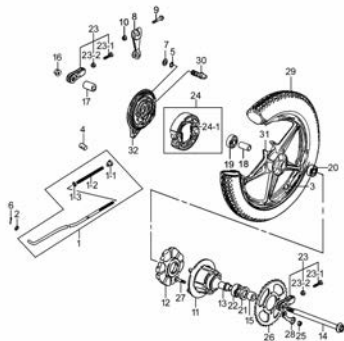


Fig. 46 BUMPER COMP (P03-S470-0004)

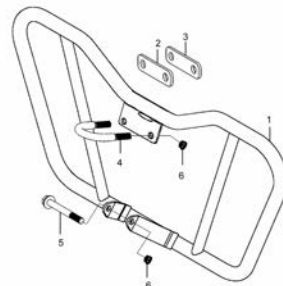


Fig. 47 CARRIER (P03-S480-0011)

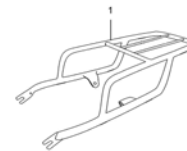


Fig.1

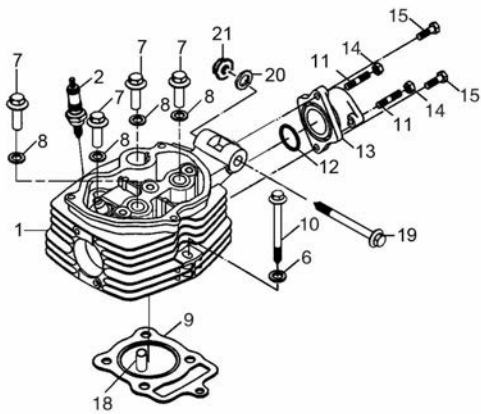
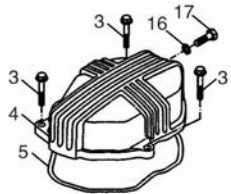


Fig.1 CYLINDER HEAD&CYLINDER HEAD COVER (P03-S010-0016)

REF. No.	PART No.	DESCRIPTION	Q'TY	REMARKS
1	11110H330J1H000	HEAD COMP, CYLINDER	1	
2	09482H33000H000	SPARK PLUG	1	
3	01550-0628A-000	BOLT, HEXAGON HEAD FLANGE	3	
4	11171H33080H000	COVER, CYLINDER HEAD	1	
5	11181H33001H000	GASKET, CYLINDER HEAD COVER	1	
6	09168-08032-000	GASKET, CYLINDER HEAD NUT	1	
7	11151H33001H000	NUT, CYLINDER HEAD	4	
8	09160H12004H000	WASHER	4	
9	11141H33010H000	GASKET, CYLINDER HEAD	1	
10	09103H08009H000	BOLT	1	
11	09108H06009H000	STUD BOLT	2	
12	09280H34002H000	O-RING	1	
13	13110H33042H000	PIPE COMP, INTAKE	1	
14	08310-0006A-000	NUT	2	
15	01547-0620A-000	BOLT	2	
16	09168-06018-000	GASKET	1	
17	01547-0612A-000	HEXAGON BOLT WITH FLANGE	1	
18	09206H10008H000	PIN	2	
19	09103H08013H000	BOLT, HEXAGON	1	
20	08322-0108A-000	PLAIN WASHER	1	
21	08319-3108A-000	NUT	1	

2



Fig. 2

2

Fig.2 CYLINDER (P03-S020-0008)

REF. No.	PART No.	DESCRIPTION	Q' TY	REMARKS
1	09206H10007H000	PIN, KNOCK	2	
2	11210H33042H0B0	CYLINDER COMP	1	
3	01547-0622A-000	BOLTS, HEXAGON HEAD FLANGE	2	
4	11241H33000H000	GASKET, CYLINDER	1	
5	09108H08013H000	BOLT, STUD	2	
6	09108H08012H000	BOLT, STUD	2	

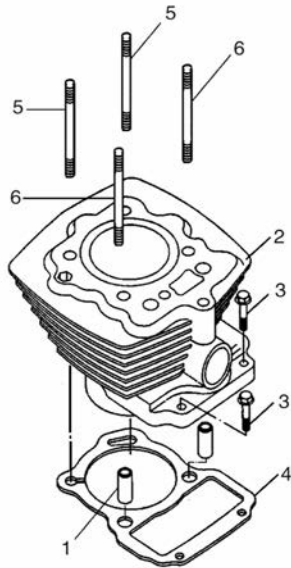


Fig. 3

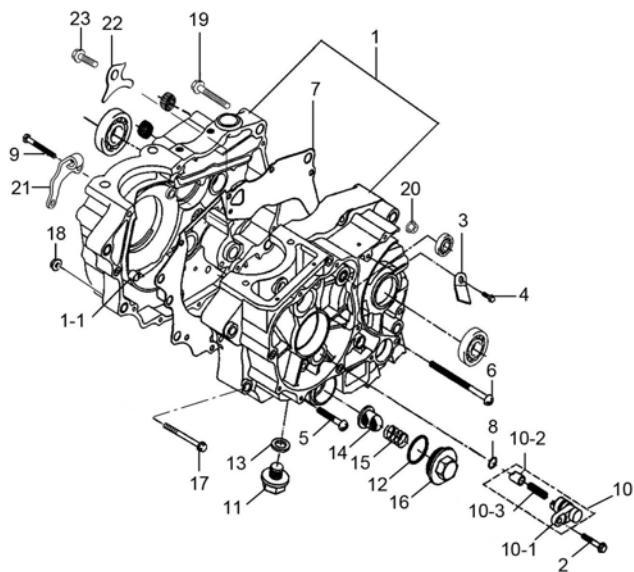


Fig.3 CRANKCASE (P03-S030-0029)

REF. No.	PART No.	DESCRIPTION	Q'TY	REMARKS
1	11300H33YA0H000	CRANKCASE SET	1	
1-1	09206H10007H000	PIN, KNOCK	2	
2	01547-0625A-000	BOLT	1	
3	11411H33000H000	PLATE	1	
4	01547-0612A-000	HEXAGON BOLT WITH FLANGE	1	
5	02112-0650A-000	CROSS RECESSED HEAD SCREW	9	
6	02112-0695A-000	CROSS RECESSED HEAD SCREW	1	
7	11481H33000H000	GASKET, CRANKCASE	1	
8	09280H13002H000	O RING	1	
9	01547-0655A-000	HEXAGON BOLT WITH FLANGE	1	
10	11430H33000H000	HANDSPIKE	1	
10-1	11431H33001H000	BRACKET, BRG PUSH PIN	1	
10-2	11432H33000H000	SEAL	1	
10-3	11433H33000H000	SPRING	1	
11	09247H12105H000	PLUG	1	
12	09280H35001H000	O-RING	1	
13	09168-12002-000	GASKET, TDC PLUG	1	
14	16520H21D01H000	STRAINER COMP, ENG OIL	1	
15	16541H33001H000	SPRING, ENGINE OIL FILTER	1	
16	16542H33000H000	COVER, ENGINE OIL FILTER	1	
17	09103H08015H000	BOLT, HEXAGON	2	
18	08319-3108A-000	NUT	2	
19	09103H10003H000	BOLT, HEXAGON	2	
20	08319-3110A-000	NUT	2	
21	11421H33B00H000	BRACKET, CLUTCH CABLE	1	
22	24741H33000H000	RETAINER, CNTR SHAFT BEARING	1	
23	01547-0616A-000	BOLT	1	

2

Fig. 4

2

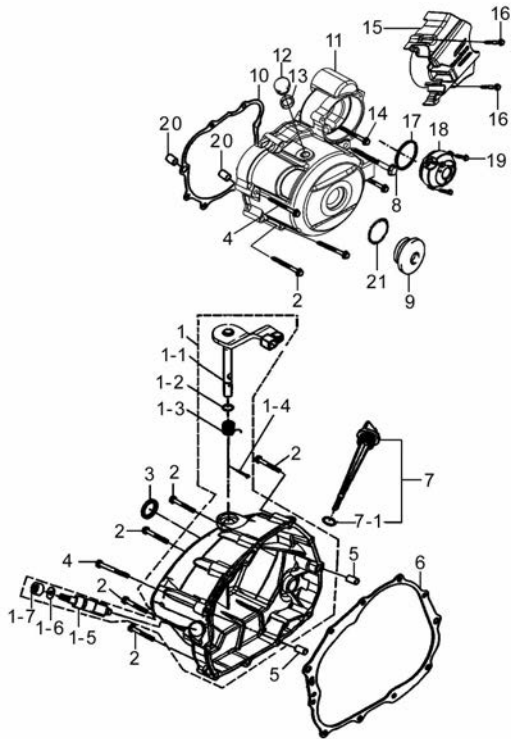


Fig.4 CRANKCASE COVER (P03-S040-0059)

REF. No.	PART No.	DESCRIPTION	Q' TY	REMARKS
1	11342H33Y71H000	COVER SET, CLUTCH	1	
1-1	23270H33B00H000	SHAFT COMP, CLUTCH RELEASE	1	
1-2	09280H09009H000	O RING	2	
1-3	23281H33011H000	TORSION SPRING, RELEASE SHAFT	1	
1-4	09205H03001H000	PIN, SPRING	1	
1-5	26431H33000H000	GEAR, TACHOMETER DRIVEN	1	
1-6	09181H06001H000	GASKET	1	
1-7	09283H07001H000	OIL SEAL	1	
2	01547-0640A-000	BOLTS, HEXAGON HEAD FLANGE	15	
3	09283H16001H000	SEAL, OIL	1	
4	01547-0650A-000	BOLTS, HEXAGON HEAD FLANGE	3	
5	09206H08004H000	PIN, KNOCK	2	
6	11482H33000H000	GASKET	1	
7	09259H99002H000	GAUGE SET, OIL LEVEL	1	
7-1	09280H18002H000	O RING	1	
8	01547-0660A-000	BOLT	1	
9	09259-26016-000	PLUG, CSHAFT HOLE	1	
10	11483H33000H000	GASKET	1	
11	11351H33033H000	COVER, MAGNETO	1	
12	09247-12104-000	PLUG, TDC	1	
13	09168-12002-000	GASKET, TDC PLUG	1	
14	01547-0625A-000	BOLT	1	
15	11361H33561H000	COVER, ENG SPROCKET	1	
16	01547-0628A-000	BOLTS, HEXAGON HEAD FLANGE	2	
17	09280H62001H000	O RING	1	
18	11441H33030H000	COVER, GEAR CASE	1	
19	01547-0616A-000	BOLT	3	
20	09206H10007H000	PIN, KNOCK	2	
21	09280-22008-000	O-RING	1	

Fig. 5

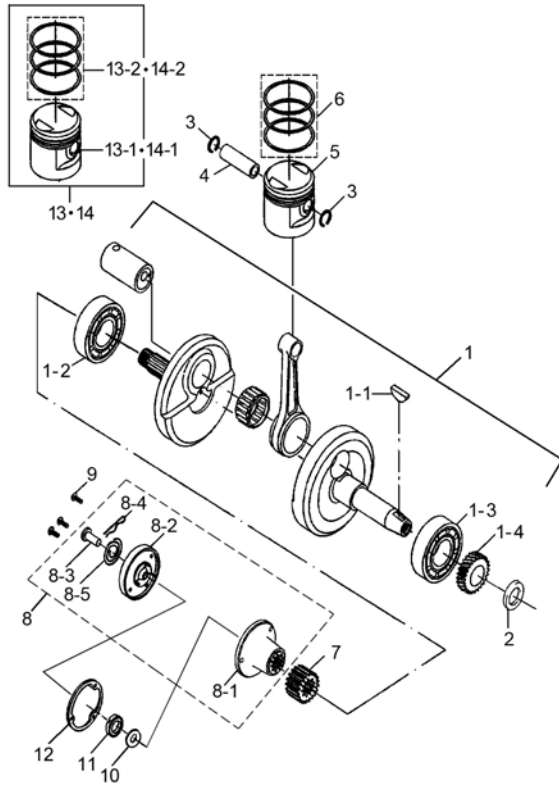


Fig.5 CRANKSHAFT (P03-S050-0012)

REF. No.	PART No.	DESCRIPTION	Q'TY	REMARKS
1	12200H33Y20H000	CRANKSHAFT SET	1	
1-1	09420H04002H000	KEY	1	
1-2	09262H28001H000	BEARING, RH	1	
1-3	09262H28002H000	BEARING, LH	1	
1-4	12751H33000H0B0	TIMING-GEAR	1	
2	09283H34001H000	OIL SEAL	1	
3	09381-14001-000	CIRCLIP	2	
4	12151H3E000H000	PIN, PISTON	1	
5	12111H33023H0B0	PISTON	1	
6	12140H33060H000	RING SET, PISTON	1	
7	21111H33000H000	GEAR, PRIMARY DRIVE	1	
8	16052H33070H000	FILTER SET, ENGINE	1	
8-1	16511H33070H000	BODY, ENGINE OIL FILTER	1	
8-2	16521H33040H000	COVER, ENGINE OIL FILTER	1	
8-3	16531H33040H000	TUBE, OIL PASSING	1	
8-4	16551H33040H000	PIN, COTTER	1	
8-5	16532H33040H000	SPRING, OIL PASSING TUBE	1	
9	02122-0512A-000	CROSS RECESSED HEAD SCREW	3	
10	16581H33000H000	WASHER	1	
11	16571H33000H000	NUT	1	
12	16561H33000H000	GASKET, ROTOR COVER	1	
13	12100H33020H050	PISTON SET (OS:0.5)	1	OPT
13-1	12111H33023H050	PISTON (OS:0.5)	1	
13-2	12140H33060H050	RING SET, PISTON (OS:0.5)	1	
14	12100H33020H025	PISTON SET (OS:0.25)	1	OPT
14-1	12111H33023H025	PISTON (OS:0.25)	1	
14-2	12140H33060H025	RING SET, PISTON (OS:0.25)	1	

2



Fig. 6

2

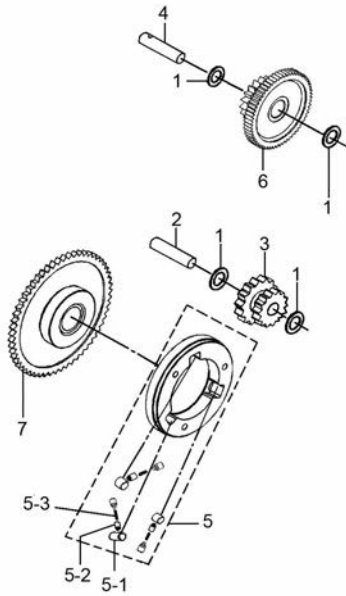


Fig.6 STARTER CLUTCH (P03-S060-0013)

REF. No.	PART No.	DESCRIPTION	Q' TY	REMARKS
1	09181H10190H000	WASHER	4	
2	12612H33010H000	SHAFT, STARTER IDLE GEAR	1	
3	12651H33010H000	GEAR, STARTER IDLE	1	
4	12662H33010H000	SHAFT, STARTER GEAR	1	
5	12630H33001H000	HUB COMP, STARTER CLUTCH	1	
5-1	09261H10005H000	ROLLER	3	
5-2	12633H33000H000	PIN	3	
5-3	09440H04013H000	SPRING	3	
6	12681H33010H000	GEAR, STARTER	1	
7	12620H33001H000	GEAR COMP, STARTER CLUTCH	1	

Fig.7

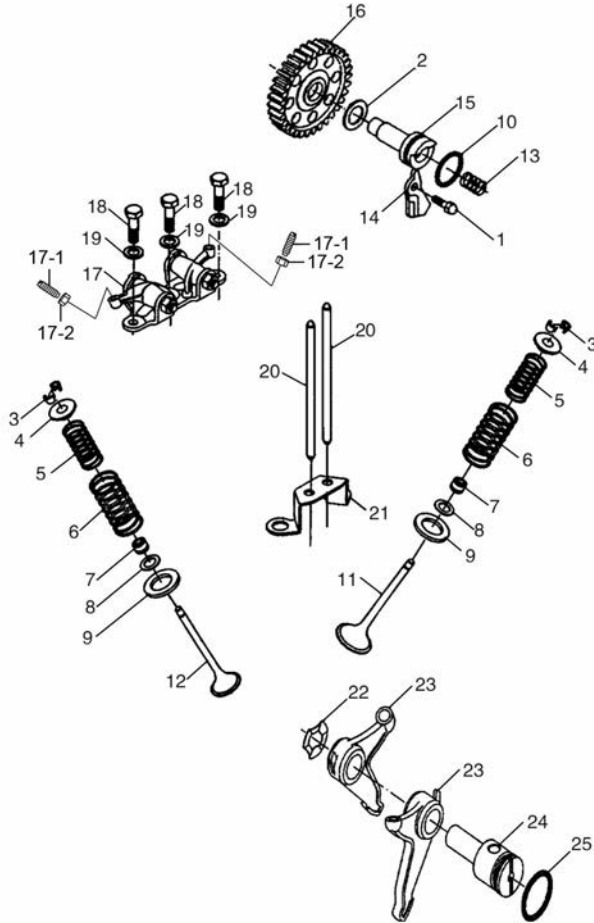


Fig.7 CAMSHAFT-VALVE (P03-S070-0022)

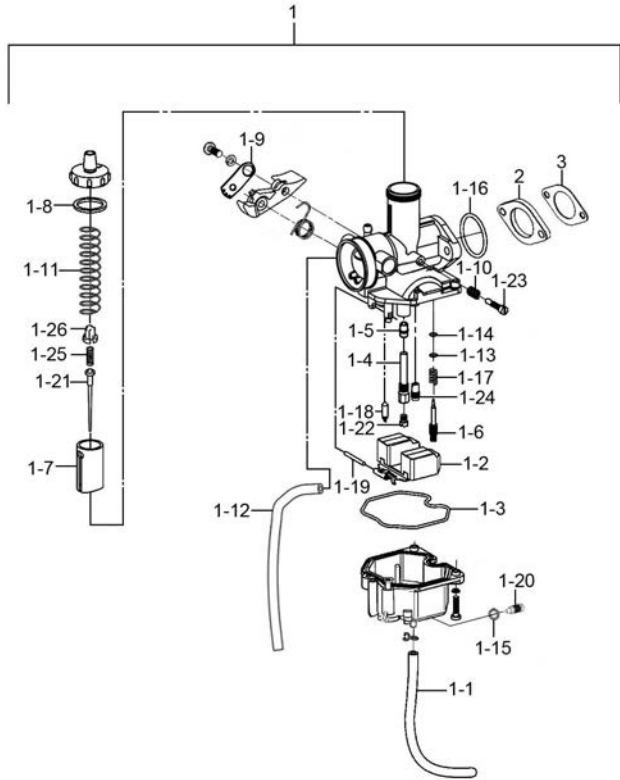
REF. No.	PART No.	DESCRIPTION	Q'TY	REMARKS
1	01547-0612A-000	HEXAGON BOLT WITH FLANGE	1	
2	08211-14241-000	GASKET	1	
3	12932H33010H000	COTTER, VALVE	4	
4	12931H33000H000	VALVE SPRING TRAY	2	
5	12921H33001H000	SPRING, VALVE INNER	2	
6	12922H33001H000	SPRING, VALVE OUTER	2	
7	09289H06001H000	OIL SEAL	2	
8	09181H12180H000	GASKET, VALVE INSIDE SPRING	2	
9	09181-19261-000	GASKET, VALVE OUTSIDE SPRING	2	
10	09280H20003H000	O RING	1	
11	12911H33030H000	VALVE, INTAKE	1	
12	12912H33000H000	VALVE, EXHAUST	1	
13	09440H13004H000	SPRING	1	
14	12741H33001H000	LIMITED LITTLE BOARD	1	
15	12731H33010H0B0	SHAFT, CAM GEAR	1	
16	12710H33030H0F0	GEAR COMP, CAM	1	
17	12840H33011H000	ARM COMP, VALVE ROCKER	1	
17-1	12851H33000H000	SCREW	2	
17-2	12852H33000H000	NUT	2	
18	12871H33010H000	BOLT	3	
19	09160H08021H000	WASHER, PLAIN	3	
20	12873H33030H000	HANDSPIKE	2	
21	11161H33000H000	PLANK, HANDSPIKE	1	
22	09164H12001H000	FLEXUOUS GASKET	1	
23	12843H33031H0A0	UNDERSIDE ROCKER	2	
24	12862H33010H0A0	SHAFT, UNDERSIDE ROCKER	1	
25	09280H17001H000	O RING	1	

2

Fig. 8

Fig.8 CARBURETOR (P03-S090-0018)

2



REF. No.	PART No.	DESCRIPTION	Q' TY	REMARKS
1	13200H30212H000	CARBURETOR ASSY	1	
1-1	13683H30120H000	HOSE, DRAIN	1	
1-2	13232H05200H000	FLOAT COMP.	1	
1-3	13222H05200H000	FLOAT CHAMBER GASKET	1	
1-4	13341H11510H000	PIPE, BLEED	1	
1-5	13241H05200H000	NEEDLE JET	1	
1-6	13261H05200H000	PILOT ADJUST SCREW	1	
1-7	13251H05200H000	THROTTLE VALVE POSTON VALVE	1	
1-8	13255H05200H000	TOP GASKET	1	
1-9	13272H05200H000	WASHER	1	
1-10	13266H05200H000	COMPRESSION SPRING	1	
1-11	13252H05200H000	COMPRESSION SPRING	1	
1-12	13684H21D20H000	AIR VENT HOSE	1	
1-13	13262H05200H000	WASHER	1	
1-14	13295H21D20H000	O RING	1	
1-15	13225H05200H000	O RING	1	
1-16	13213H05200H000	O RING	1	
1-17	13264H05200H000	SPRING	1	
1-18	13234H05200H000	NEEDLE VALVE ASSY.	1	
1-19	13231H05200H000	PIN	1	
1-20	13226H05200H000	DRAIN SCREW	1	
1-21	13383H30210H000	JET NEEDLE	1	
1-22	09491H88070H000	JET, MAIN	1	
1-23	13263H05200H000	SPRING SCREW	1	
1-24	13245H05200H000	PILOT JET	1	
1-25	13257H05200H000	COLLAR	1	
1-26	13258H05200H000	E RING	1	
2	13112H22500H000	PLATE, CARB HEAT GUARD	1	
3	13113H22502H000	GASKET, CARB HEAT GUARD PL	1	

Fig.9

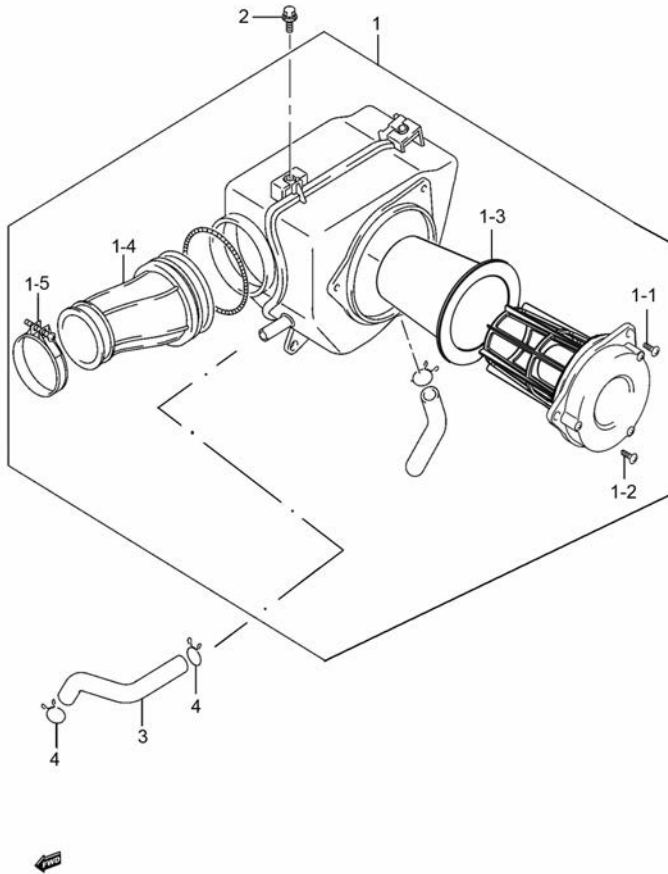


Fig.9 AIR CLEANER (P03-S100-0006)

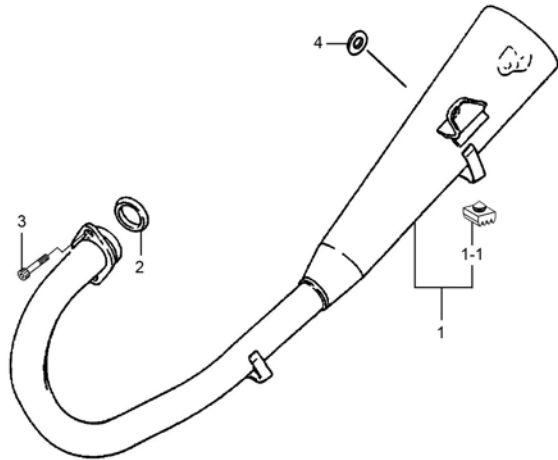
REF. No.	PART No.	DESCRIPTION	Q'TY	REMARKS
1	13700H30103H000	CLEANER ASSY, AIR	1	
1-1	02142-0512A-000	CROSS RECESSED HEAD SCREW	3	
1-2	03241-0416A-000	CROSS RECESSED HEAD TAPPING SCREW	3	
1-3	13781H2A300H000	FILTER, AIR CLNR	1	
1-4	13881H2A300H000	TUBE, OUTLET	1	
1-5	13830H11200H000	CLAMP	1	
2	01580-0616B-000	BOLT	3	
3	13851H30100H000	TUBE, BREATHER	1	
4	09401H15201H000	CLAMP	2	

2

Fig. 10

Fig.10 MUFFLER (P03-S110-0011)

REF. No.	PART No.	DESCRIPTION	Q' TY	REMARKS
1	14036H11850H000	MUFFLER SET	1	
1-1	42278-45F00-000	STOPPER, CENTER STAND	1	
2	14181H11200H000	GASKET, EXH PIPE	1	
3	07130-0825A-000	BOLT	2	
4	08322-0110A-000	PLAIN WASHER	1	



2

Fig. 11

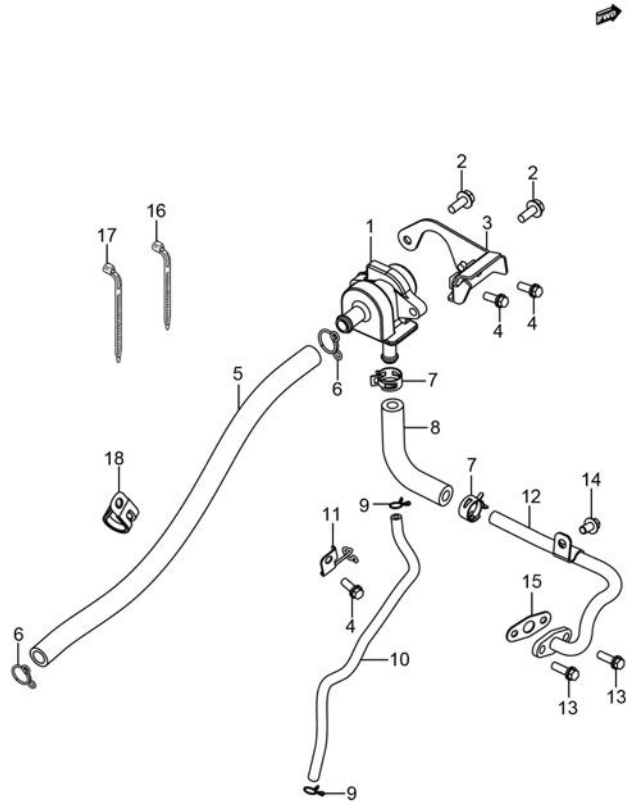


Fig.11 2ND AIR VAVLE (P03-S120-0010)

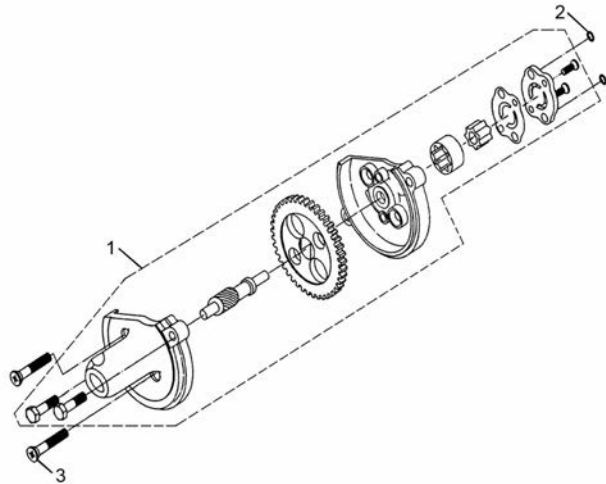
REF. No.	PART No.	DESCRIPTION	Q'TY	REMARKS
1	18450H12E60H000	VALVE ASSY, 2ND AIR	1	
2	01550-0620A-000	BOLTS, HEXAGON HEAD FLANGE	2	
3	18610H21F00H000	BRACKET COMP, 2ND AIR VALVE	1	
4	01550-0612A-000	BOLT	3	
5	18712H21F00H000	HOSE, 2ND AIR CLNR	1	
6	09401-15101-000	CLIP, 2ND AIR CLNR HOSE	2	
7	09401-15404-000	CLIP, FUEL HOSE	2	
8	18461H30201H000	HOSE, 2ND AIR VALVE	1	
9	09401-06101-000	CLIP	2	
10	18463H30200H000	HOSE, 2ND AIR VALVE VACUUM	1	
11	18442H30200H000	GUIDE, 2ND AIR VALVE HOSE	1	
12	18410H30200H000	PIPE COMP, 2ND AIR	1	
13	01547-0616A-000	BOLT	2	
14	01547-0616A-000	BOLT	1	
15	18441H50100H000	SEAL, 2ND AIR HOSE	1	
16	09407-18402-000	CLAMP, FUEL FILTER NO. 2	1	
17	09407-14403-000	CLAMP, FUEL HOSE	1	
18	36651-05320-000	CLAMP	1	

2

Fig. 12

Fig.12 OIL PUMP (P03-S130-0003)

REF. No.	PART No.	DESCRIPTION	Q' TY	REMARKS
1	16400H35031H000	PUMP ASSY, ENG OIL	1	
2	09280H09008H000	O RING	2	
3	02122-0628A-000	CROSS RECESSED HEAD SCREW	2	



2



Fig. 13

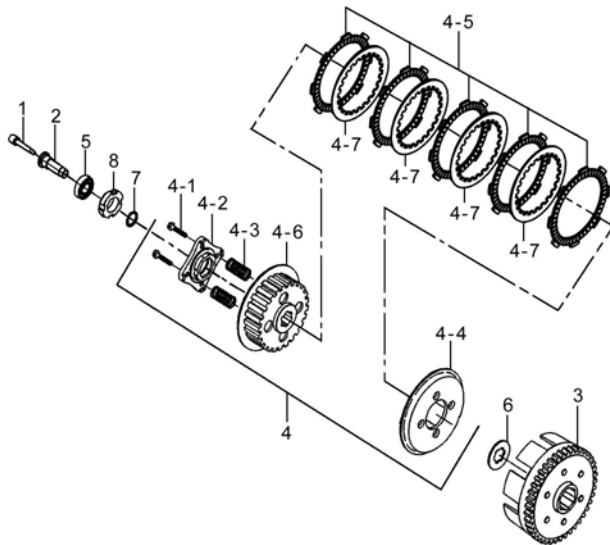


Fig.13 CLUTCH (P03-S140-0010)

REF. No.	PART No.	DESCRIPTION	Q' TY	REMARKS
1	23131H33030H000	POLE, CLUTCH PUSH	1	
2	23121H33020H000	GUIDE PIN, CLUTCH	1	
3	21210H33030H000	HUB COMP, PRIMARY DRIVE	1	
4	21410H33070H000	HUB ASSY, CLUTCH SLEEVE	1	
4-1	01550-0622A-000	BOLT, HEXAGON HEAD FLANGE	4	
4-2	21471H33020H000	PUSH SET, CLUTCH	1	
4-3	09440H33000H000	SPRING CLUTCH	4	
4-4	21461H33000H000	HUB, DRIVEN	1	
4-5	21420H33000H000	PLATE GROUP, CLUTCH DRIVE	1	
4-6	21421H33000H000	SEAT, CLUTCH HUB DRIVEN	1	
4-7	21451H33000H000	PLATE, CLUTCH DRIVEN	4	
5	09262H17001H000	BEARING, CLUTCH	1	
6	21481H33000H000	WASHER	1	
7	16581H33000H000	WASHER	1	
8	21346H33000H000	NUT, LOCK	1	

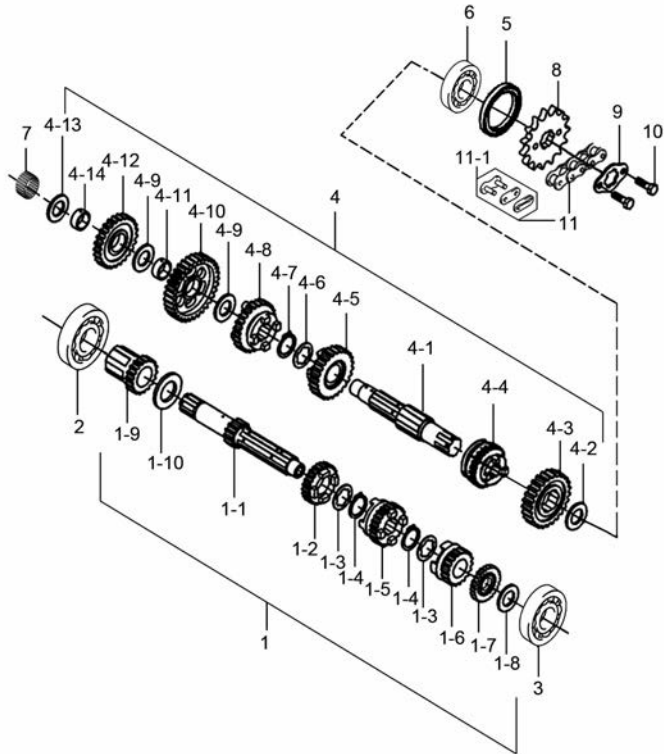
2



Fig. 14

Fig.14 TRANSMISSION (P03-S150-0010)

2



REF. No.	PART No.	DESCRIPTION	Q' TY	REMARKS
1	24130H33041H000	SHAFT ASSY, DRIVE	1	
1-1	24131H33031H000	SHAFT, DRIVE	1	
1-2	24231H33010H000	GEAR, 3RD DRIVE	1	
1-3	24232H33000H000	WASHER	2	
1-4	08331-31209-000	CIRCLIP	2	
1-5	24241H33000H000	GEAR, 4TH DRIVE	1	
1-6	24251H33000H000	GEAR, 5TH DRIVE	1	
1-7	24221H33000H000	GEAR, 2ND DRIVE	1	
1-8	08211-15251-000	WASHER, 1ST DRIVEN GEAR, R THR	1	
1-9	24210H3F000H000	GEAR COMP, DRIVE	1	
1-10	09181H20270H000	WASHER	1	
2	08110-60060-000	BEARING	1	
3	09262H15009H000	BEARING	1	
4	24120H33061H000	SHAFT COMP, COUNTER	1	
4-1	24121H33111H000	SHAFT, COUNTER	1	
4-2	08211-20271-000	WASHER	1	
4-3	24321H33020H000	GEAR, 2ND DRIVEN	1	
4-4	24351H33000H000	GEAR, 5TH DRIVEN	1	
4-5	24341H33010H000	GEAR, 4TH DRIVEN	1	
4-6	24232H33000H000	WASHER	1	
4-7	08331-31209-000	CIRCLIP	1	
4-8	24331H33010H000	GEAR, 3RD DRIVEN	1	
4-9	09181H17240H000	WASHER	2	
4-10	24311H33010H000	GEAR, 1ST DRIVEN	1	
4-11	24312H33000H000	BUSH	1	
4-12	24301H33000H000	GEAR, DRIVEN	1	
4-13	08211-15301-000	WASHER	1	
4-14	24302H33000H000	BUSH, DRIVEN	1	
5	09283H20001H000	SEAL, OIL	1	

Fig. 14

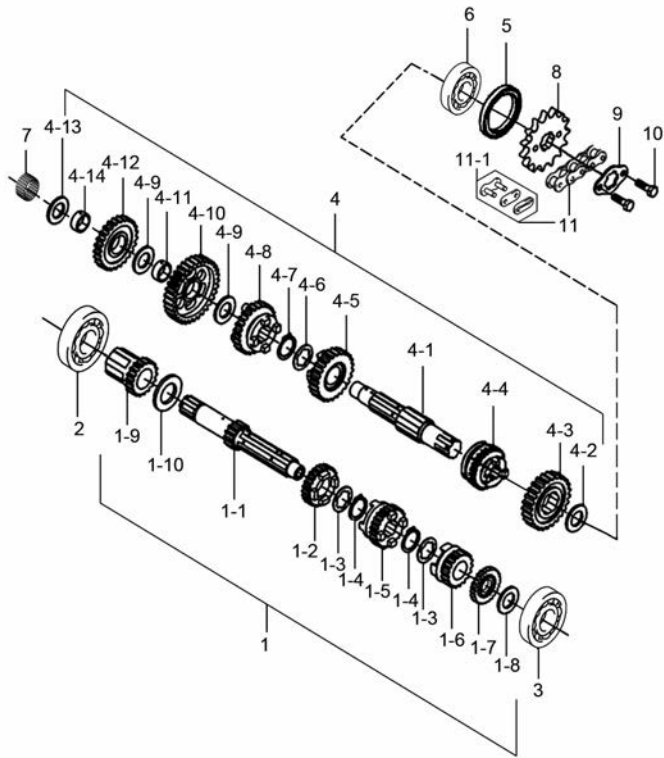


Fig.14 TRANSMISSION (P03-S150-0010)

REF. No.	PART No.	DESCRIPTION	Q' TY	REMARKS
6	08110-62040-000	BEARING, DRIVE SHAFT	1	
7	09263H15001H000	ROLLER BEARING	1	
8	27511H33030H000	SPROCKET, ENGINE	1	
9	27521H33010H000	WASHER	1	
10	01500-0610A-000	BOLT	2	
11	27600H2A010H114	CHAIN ASSY, DRIVE	1	
11-1	27620H2A010H000	JOINT SET, CHAIN	1	

2



Fig. 15

2

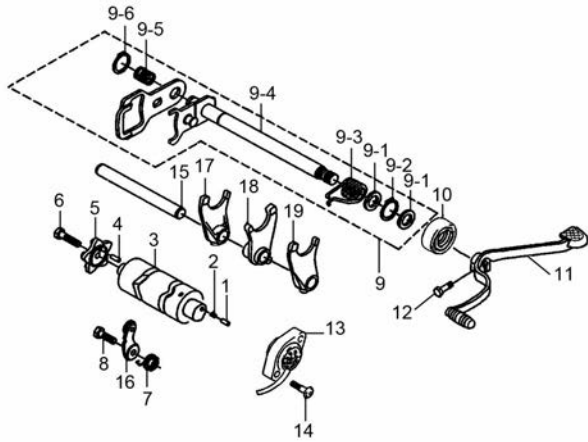


Fig.15 GEAR SHIFTING (P03-S160-0015)

REF. No.	PART No.	DESCRIPTION	Q'TY	REMARKS
1	25311H33000H000	PIN	1	
2	09440H04010H000	SPRING, COMPRESSION	1	
3	25310H33011H000	CAM COMP, GEAR SHIFT	1	
4	04221-04109-000	PIN	1	
5	25381H33010H000	PIN, FIXING CAM	1	
6	01500-0625A-000	BOLTS, HEXAGON HEAD	1	
7	25351H33010H000	SPRING, GEAR SHIFT CAM STOPPER	1	
8	09100H06022H000	BOLT, HEXAGON	1	
9	25500H33050H000	SHAFT ASSY, GEAR SHIFT	1	
9-1	09181H16200H000	WASHER	2	
9-2	08331-31149-000	CIRCLIP, KICK SHAFT	1	
9-3	25531H33000H000	SPRING, SHIFT SHAFT RETURN	1	
9-4	25510H33050H000	SHAFT COMP, GEAR SHIFT	1	
9-5	25561H33000H000	SPRING, GEAR SHIFT PLATE RETURN	1	
9-6	08331-31129-000	CIRCLIP	1	
10	09283H14001H000	OIL SEAL	1	
11	25600H30100H000	LEVER ASSY, GEAR SHIFT	1	
12	01500-0820A-000	BOLT	1	
13	37720H33041H000	BASE ASSY, GEAR SHIFT TERM	1	
14	02112-0418A-000	CROSS RECESSED HEAD SCREW	2	
15	25411H33000H000	SHAFT	1	
16	25350H33011H000	STOPPER COMP, GEAR SHIFT CAM	1	
17	25211H33000H000	FORK, GEAR SHIFT, R	1	
18	25231H33000H000	FORK, GEAR SHIFT, MIDDLE	1	
19	25241H33000H000	FORK, GEAR SHIFT, L	1	

Fig.16

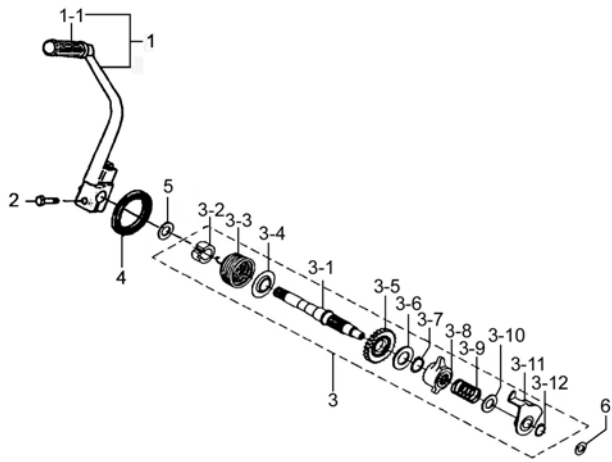


Fig.16 KICK STARTER (P03-S165-0002)

REF. No.	PART No.	DESCRIPTION	Q'TY	REMARKS
1	26300H30100H000	LEVER ASSY, KICK STARTER	1	
1-1	26352-01000-000	RUBBER, KICK STARTER LEVER	1	
2	01500-0825A-000	BOLTS, HEXAGON HEAD	1	
3	26021H33030H000	SHAFT SET, KICK STARTER	1	
3-1	26211H33030H000	SHAFT, KICK STARTER	1	
3-2	26211H33010H000	BUSH	1	
3-3	26221H33000H000	SPRING	1	
3-4	26222H33000H000	SEAT, SPRING	1	
3-5	26241H33000H000	GEAR, KICK STARTER DRIVE	1	
3-6	09181H20270H000	WASHER	1	
3-7	08331-31209-000	CIRCLIP	1	
3-8	26251H33000H000	RATCHET WHEEL	1	
3-9	26252H33000H000	SPRING RATCHET	1	
3-10	08211-16241-000	WASHER	1	
3-11	26261H33000H000	GUIDE	1	
3-12	08331-31169-000	CIRCLIP	1	
4	09283H16001H000	SEAL, OIL	1	
5	08211-16301-000	WASHER	1	
6	08211-12181-000	WASHER	1	

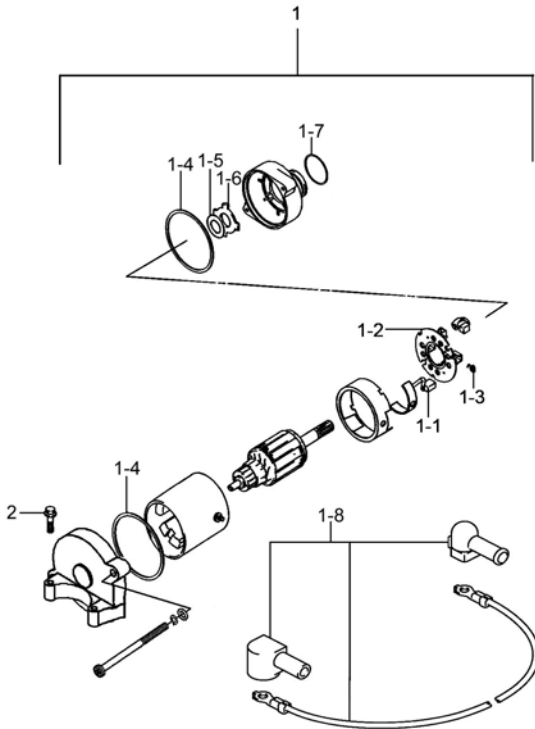
2



Fig. 17

Fig.17 STARTING MOTOR (P03-S170-0003)

REF. No.	PART No.	DESCRIPTION	Q' TY	REMARKS
1	31100H33050H000	MOTOR ASSY, STARTING	1	
1-1	31130H33000H000	BRUSH, STARTER	1	
1-2	31133H33000H000	BRUSH SUB ASSY	1	
1-3	31135H33000H000	SPRING	4	
1-4	31156H33050H000	O-RING	2	
1-5	31362H33000H000	WASHER	1	
1-6	31361H33000H000	WASHER	1	
1-7	09280H33000H000	O RING	1	
1-8	33810H33050H000	WIRE, STARTER MOTOR	1	
2	01550-0628A-000	BOLT, HEXAGON HEAD FLANGE	2	



3



Fig. 18

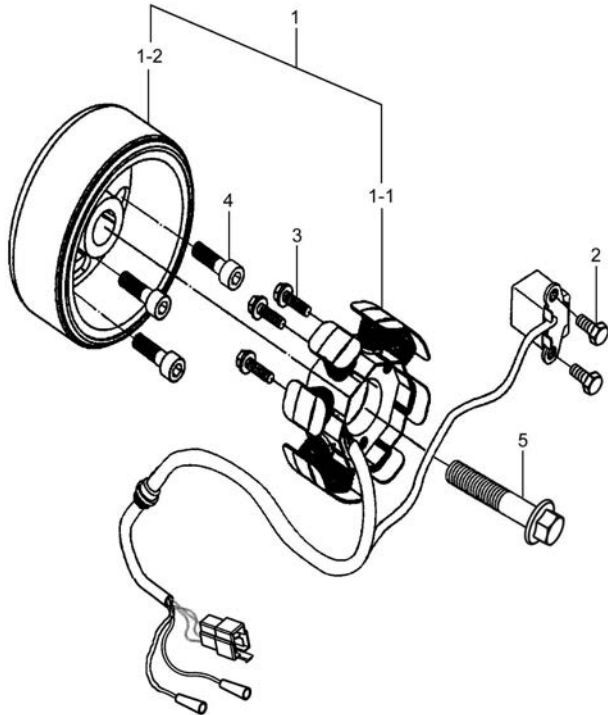


Fig.18 MAGNETO (P03-S180-0008)

REF. No.	PART No.	DESCRIPTION	Q' TY	REMARKS
1	32100H2E000H000	MAGNETO ASSY	1	
1-1	32101H330C0H000	STATOR ASSY	1	
1-2	32102H2E000H000	ROTOR ASSY	1	
2	09100H05004H000	BOLT, HEXAGON	2	
3	01547-0525A-000	BOLTS, HEXAGON HEAD FLANGE	3	
4	32491H33010H000	BOLT, MAGNETO ROTOR	3	
5	32111H33010H000	BOLT, MAGNETO	1	

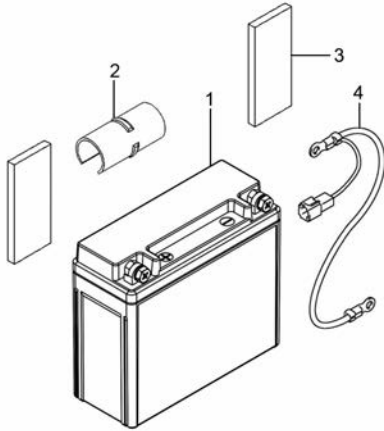
3



Fig. 19

Fig.19 BATTERY (P03-S190-0018)

REF. No.	PART No.	DESCRIPTION	Q' TY	REMARKS
1	33620H2E000H000	FILLED BATTERY ASSY	1	
2	33652-05320-000	PROTECTOR, BATTERY	1	
3	33652-38000-000	PROTECTOR, BATTERY	4	
4	33860H12600H000	WIRE, BATTERY MINUS LEAD	1	



3



Fig. 20

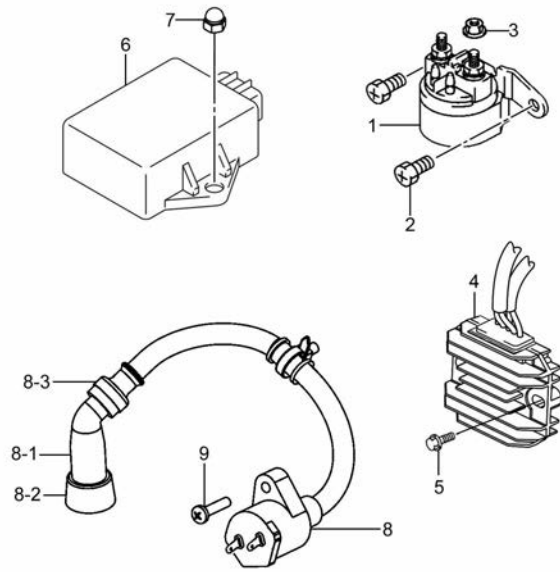


Fig.20 ELECTRICAL (P03-S200-0013)

REF. No.	PART No.	DESCRIPTION	Q'TY	REMARKS
1	31800-49110-000	RELAY ASSY, STARTING MOTOR	1	
2	09128-06004-000	SCREW, STG MOT RLY	2	
3	08361-3506A-000	NUT	2	
4	32800H05523H000	RECTIFIER ASSY	1	
5	01547-0616A-000	BOLT	2	
6	32900H2E010H000	CDI UNIT	1	
7	08313-2006B-000	DOMED CAP NUT	2	
8	33410H30200H000	COIL ASSY, IGNITION	1	
8-1	33510-04H10-000	CAP, SPARK PLUG	1	
8-2	33541H30200H000	SEAL, SPARK PLUG	1	
8-3	33542H30200H000	SEAL, HIGH TENSION CORD	1	
9	02112-1520A-000	CROSS RECESSED HEAD SCREW	1	

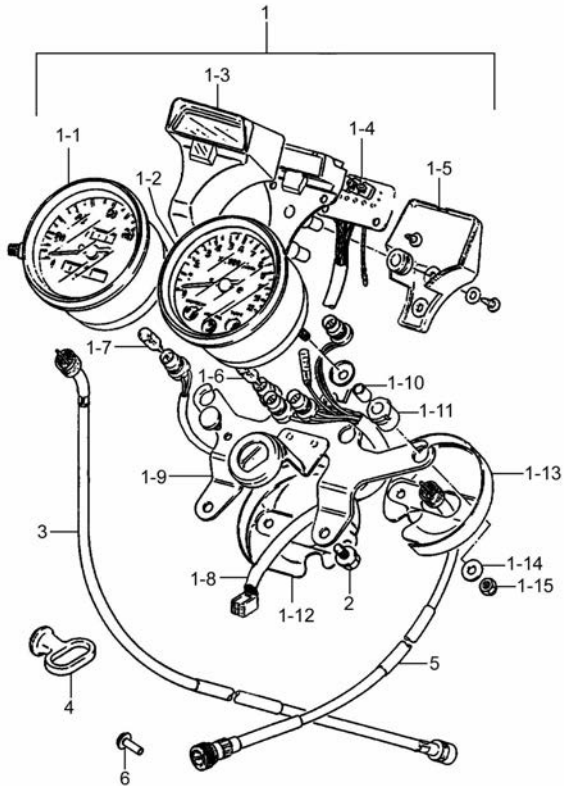
3



Fig. 21

Fig.21 SPEEDOMETER (P03-S210-0029)

3



REF. No.	PART No.	DESCRIPTION	Q' TY	REMARKS
1	34100H30813H000	SPEEDOMETER ASSY	1	
1-1	34110H11810H000	SPEEDOMETER COMP	1	
1-2	34210H11810H000	TACHOMETER ASSY	1	
1-3	34150H30810H000	HOOD, SPEEDOMETER	1	
1-4	34174H30811H000	WIER HARNES, METER NO. 2	1	
1-5	34152H30811H000	LOW CASE, SPEEDOMETER	1	
1-6	09471-12196-000	BULB, CUNIFORM LAMP HOLDER	3	T10 12V 3W
1-7	09471H12090H000	BULB	2	T10 12V 3W BALCK
1-8	34173H30810H000	WIRE HARNES, SPEEDOMETER	1	
1-9	34950H05320H000	BRACKET, METER	1	
1-10	34187H28310H000	SPACER	4	
1-11	34189H28310H000	CUSHION	4	
1-12	34193H05300H000	UNDER COVER, SPEEDOMETER	1	
1-13	34293H05300H000	UNDER COVER, TACHOMETER	1	
1-14	34968H36010H000	WASHER	4	
1-15	08316-03920-000	NUT	4	
2	01550-0616A-000	BOLT	2	
3	34910H30801H000	CABLE ASSY, SPEEDOMETER	1	
4	58621-05300-000	GUIDE, SPEEDOMETER CABLE	1	
5	34940H30812H000	CABLE ASSY, TACHOMETER	1	
6	02132-05257-000	SCREW	1	

Fig. 22

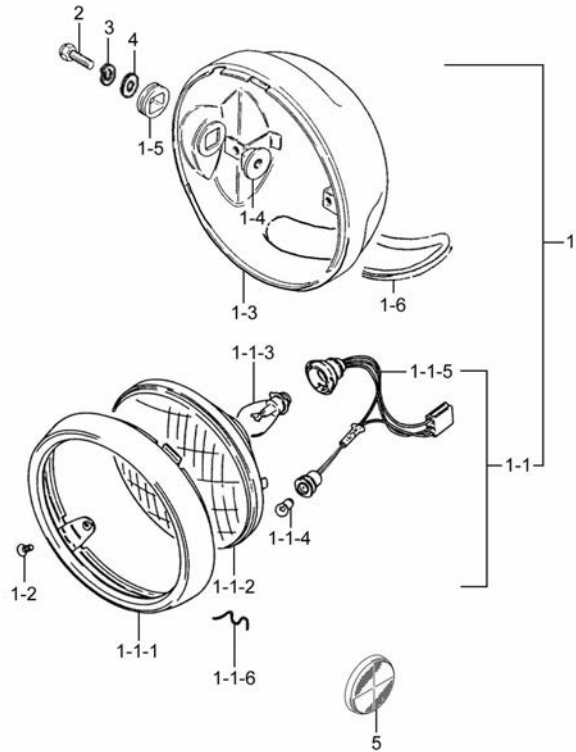


Fig.22 HEADLAMP (P03-S220-0021)

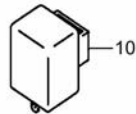
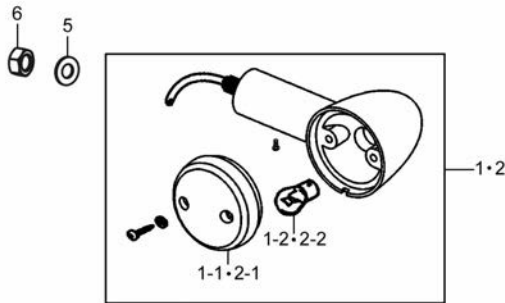
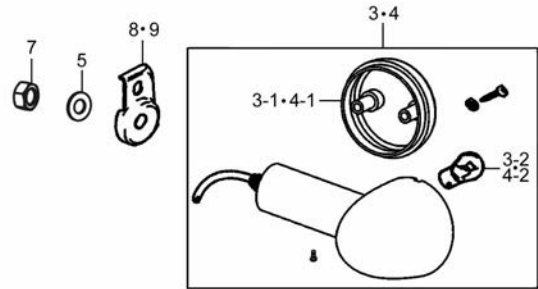
REF. No.	PART No.	DESCRIPTION	Q'TY	REMARKS
1	35011H3080AH000	HEADLAMP SET	1	
1-1	35100H30802H000	HEADLAMP ASSY	1	
1-1-1	35111H30800H000	RIM, HEADLAMP	1	
1-1-2	35121H30801H000	UNIT, HEADLAMP	1	
1-1-3	09471-12020-000	BULB, HEADLAMP	1	12V 35/35W
1-1-4	09471-12063-000	BULB	1	12V 4W
1-1-5	35171H30801H000	CORD, HEADLAMP	1	
1-1-6	35172H30800H000	SPRING, HEADLAMP SOCKET	4	
1-2	02122-05127-000	SCREW	2	
1-3	51810H44220H000	HOUSING COMP, HEADLAMP	1	
1-4	51821-36200-000	SPACER, HEADLAMP HOUSING	2	
1-5	51827-27303-000	CUSHION, HEADLAMP HOUSING	2	
1-6	94631-05300-000	MOLDING	1	
2	01204-08207-000	BOLT	2	
3	08321-01087-000	WASHER	2	
4	08322-01087-000	PLATE WASHER	2	
5	35950H7A000H000	REFLEX REFLECTOR ASSY, FR SIDE	2	

3

Fig. 23

Fig.23 TURN SIGNAL LAMP (P03-S230-0021)

REF. No.	PART No.	DESCRIPTION	Q' TY	REMARKS
1	35601H05320H000	LAMP ASSY, FRONT TURNSIGNAL, R	1	
1-1	35612H05320H000	LENS, FRONT TURNSIGNAL, R	1	
1-2	09471-12177-000	BULB (12V 10W)	1	12V R10W
2	35602H05320H000	LAMP ASSY, FRONT TURNSIGNAL, L	1	
2-1	35632H05320H000	LENS, FRONT TURNSIGNAL, L	1	
2-2	09471-12177-000	BULB (12V 10W)	1	12V R10W
3	35603H05320H000	LAMP ASSY, REAR TURNSIGNAL, R	1	
3-1	35632H05320H000	LENS, FRONT TURNSIGNAL, L	1	
3-2	09471-12177-000	BULB (12V 10W)	1	12V R10W
4	35604H05320H000	LAMP ASSY, REAR TURNSIGNAL, L	1	
4-1	35612H05320H000	LENS, FRONT TURNSIGNAL, R	1	
4-2	09471-12177-000	BULB (12V 10W)	1	12V R10W
5	09160-10501-000	WASHER, PLAIN	4	
6	08310-0010A-000	HEXAGON NUT	2	
7	08310-00107-000	NUT, REAR TURNSIGNAL LAMP	2	
8	35621H05320H000	BRACKET, REAR TURNSIGNAL LAMP, R	1	
9	35641H05320H000	BRACKET, REAR TURNSIGNAL LAMP, L	1	
10	38610-04H02-000	RELAY ASSY, TURNSIGNAL	1	



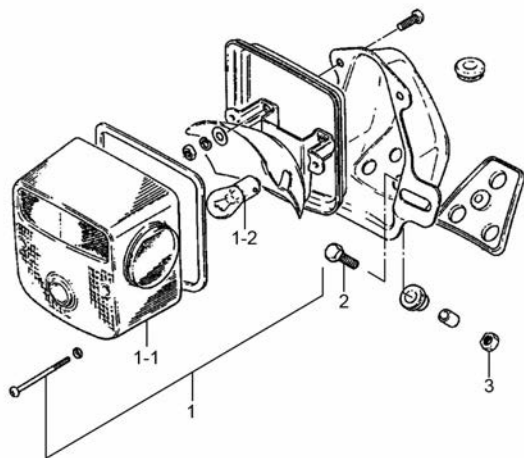
3



Fig. 24

Fig.24 REAR COMBINATION LAMP (P03-S240-0016)

REF. No.	PART No.	DESCRIPTION	Q' TY	REMARKS
1	35710H05352H000	LAMP ASSY, REAR COMB	1	
1-1	35712H05350H000	LENS, REAR COMB	1	
1-2	09471H12030H000	BULB	1	12V P21/5W
2	09116-06167-000	BOLT WITH WASHER	3	
3	08310-0006A-000	NUT	3	

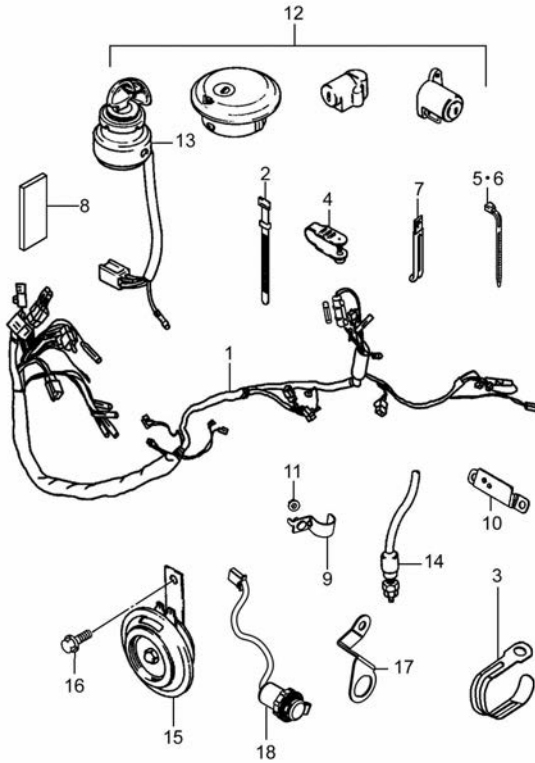


3

Fig. 25

Fig.25 WIRING HARNESS (P03-S250-0046)

REF. No.	PART No.	DESCRIPTION	Q'TY	REMARKS
1	36610H30231H000	HARNESS WIRING	1	
2	09407-12402-000	CLAMP, WIRING HARNESS	2	
3	36651-05320-000	CLAMP	2	
4	09407-05403-000	CLAMP, REAR FENDER	2	
5	09407-14403-000	CLAMP, FUEL HOSE	5	
6	09407-18402-000	CLAMP, FUEL FILTER NO. 2	4	
7	09404-06030-000	CLAMP	2	
8	33652H30100H000	PROTECTOR, BATTERY	1	
9	36651H12E01H000	CLAMP, WIRING HARNESS	1	
10	51455H30101H000	CLIP	1	
11	08316-1006B-000	NUT	1	
12	37011H11810H000	LOCK SET	1	
13	37110-11800-000	SWITCH ASSY, IGNITION	1	
14	37740H30J00H000	SWITCH ASSY, STOP LAMP	1	
15	38500H21401H000	HORN ASSY	1	
16	09103-08527-000	BOLT	1	
17	39411H30230H000	BRACKET, POWER SOURCE TERMINAL	1	
18	39420H17311H000	CHARGER ASSY, USB	1	



3

Fig. 26

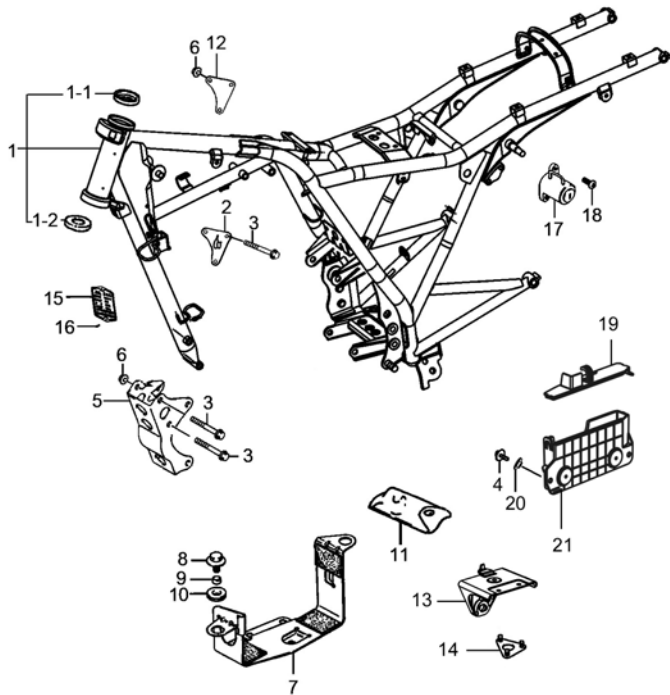


Fig.26 FRAME (P03-S260-0047)

REF. No.	PART No.	DESCRIPTION	Q'TY	REMARKS
1	41102H30Y71H000	FRAME SET	1	
1-1	51611H2A201H000	RACE, STEERING INNER UPPER	1	
1-2	51612H2A200H000	RACE, STEERING INNER LOWER	1	
2	41980H21F00H000	PLATE COMP, ENG MTG UPPER, L	1	
3	09103H08013H000	BOLT, HEXAGON	5	
4	02162-0512B-000	CROSS RECESSED HEAD SCREW	2	
5	41992H2E000H000	BRACKET, ENG MTG LOWER	1	
6	08319-3108A-000	NUT	7	
7	41540H30100H000	HOLDER COMP, BATTERY	1	
8	09116-06008-000	BOLT WITH WASHER	2	
9	09180-06038-000	SPACER, TOOL BOX	2	
10	09320H08005H000	CUSHION	2	
11	09800H20015H000	TOOL ASSY	1	
12	41970H30200H000	PLATE COMP, ENG MTG UPPER, R	1	
13	18572-26H10-000	HOLDER, CANISTER COMP	1	
14	47440-05301-000	PLATE COMP, TOOL HOLDER	1	
15	68311H30180H000	PLATE, LICENSE	1	
16	68389-45F00-000	RIVET	2	
17	95700-37400-000	LOCK ASSY, HELMET	1	
18	95729-05360-000	SCREW, HELMET LOCK	2	
19	47432-05311-000	CAP, TOOL BOX	1	
20	09169-05012-000	WASHER, REAR FENDER LOWER	2	
21	47430H30202H000	BOX ASSY, TOOL	1	

4



Fig. 27

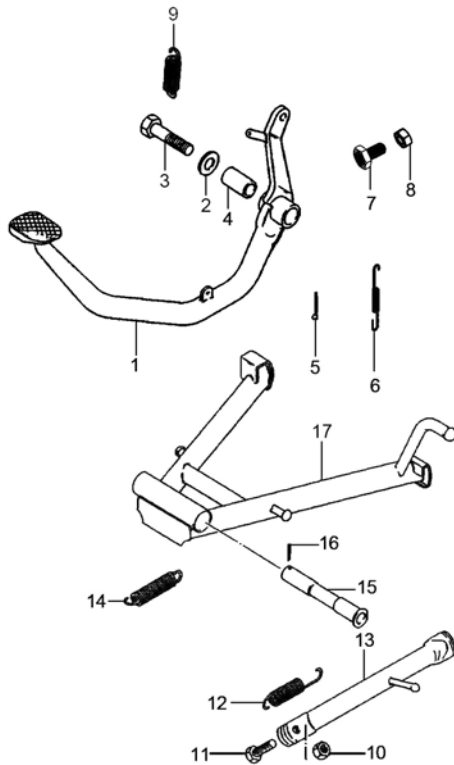


Fig.27 STAND (P03-S270-0021)

REF. No.	PART No.	DESCRIPTION	Q' TY	REMARKS
1	43110H30131H000	PEDAL COMP, BRAKE	1	
2	08322-0110A-000	PLAIN WASHER	1	
3	43213-45F00-000	BOLT, BRAKE PEDAL	1	
4	43231-05302-000	SPACER, BRAKE PEDAL BOSS	1	
5	04111-2020A-000	COTTER PIN	1	
6	09443H07004H000	SPRING, TENSION	1	
7	43159-45F00-000	BOLT, BRAKE PEDAL ADJUSTER	1	
8	08310-0006A-000	NUT	1	
9	09443-14015-000	SPRING, TENSION	1	
10	08319-3110A-000	NUT	1	
11	42341-36H00-000	BOLT, PROP STAND	1	
12	42241-26H10-000	SPRING, CENTER STAND	1	
13	42310-05340-000	STAND COMP, PROP	1	
14	09443-19020-000	SPRING, TENSION	1	
15	42211H2A200H000	SHAFT, CENTER STAND	1	
16	04111-2525A-000	COTTER PIN	1	
17	42100H21400H000	STAND COMP, CENTER	1	

4

Fig. 28

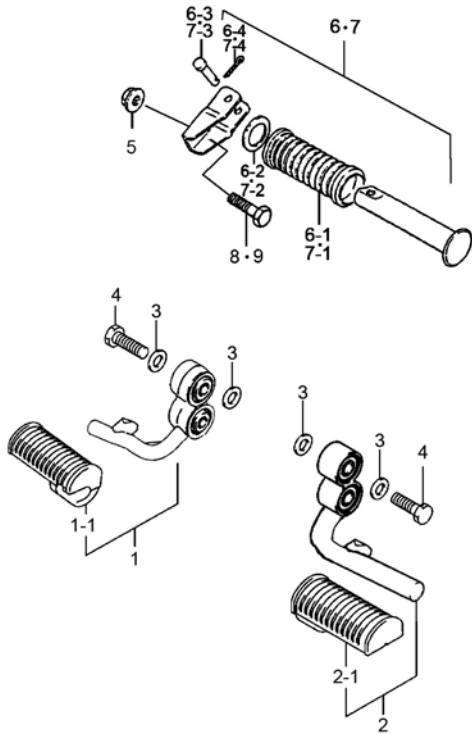


Fig.28 FOOTREST (P03-S280-0021)

REF. No.	PART No.	DESCRIPTION	Q'TY	REMARKS
1	43501H30112H000	FOOTREST ASSY, FRONT, R	1	
1-1	43551-05500-000	RUBBER, FR FOOTREST	1	
2	43502H05360H000	FOOTREST ASSY, FRONT, L	1	
2-1	43551-05500-000	RUBBER, FR FOOTREST	1	
3	09160-10059-000	WASHER, PLAIN	8	
4	43539-45F00-000	BOLT, FR FOOTREST BAR	4	
5	08316-1010A-000	NUT	1	
6	43600-05321-000	FOOTREST ASSY, PILLION, R	1	
6-1	43612-33210-000	RUBBER, PILLION FOOTREST	1	
6-2	09160-19006-000	WASHER, PILLION FOOTREST	1	
6-3	09200-06033-000	PIN, PILLION FOOTREST	1	
6-4	04111-2015A-000	COTTER PIN	1	
7	43700-05321-000	FOOTREST ASSY, PILLION, L	1	
7-1	43612-33210-000	RUBBER, PILLION FOOTREST	1	
7-2	09160-19006-000	WASHER, PILLION FOOTREST	1	
7-3	09200-06033-000	PIN, PILLION FOOTREST	1	
7-4	04111-2015A-000	COTTER PIN	1	
8	01550-1025B-000	HEXAGON BOLT WITH FLANGE	1	
9	01550-1045A-000	BOLT	1	

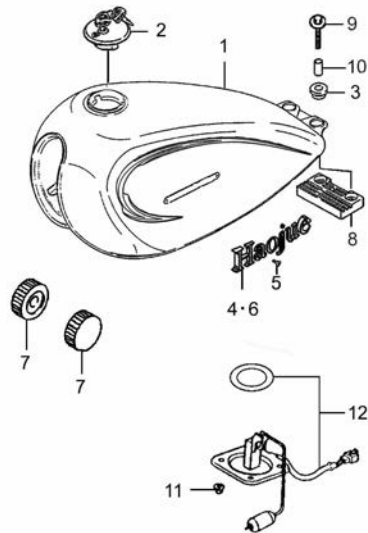
4



Fig. 29

Fig.29 FUEL TANK (P03-S290-0082)

REF. No.	PART No.	DESCRIPTION	Q' TY	REMARKS
1	44011H308B0HF01	FUEL TANK SET (RED)	1	
1	44011H308B0HF03	FUEL TANK SET (PURPLE)	1	
1	44011H308B0HF04	FUEL TANK SET (BLUE)	1	
1	44011H308B0HF06	FUEL TANK SET (PEARL BLACK)	1	
1	44011H308B0HF07	FUEL TANK SET (GREY)	1	
2	44200H053H0H000	CAP ASSY, FUEL TANK FILLER	1	
3	44542-36H10-000	CUSHION, FUEL TANK REAR UPPER	2	
4	68111H11810H000	EMBLEM, LH	1	
5	02122-0306B-000	CROSS RECESSED COUNTERSUNK HEAD SCREW	4	
6	68111H11820H000	EMBLEM, RH	1	
7	44281-12FH0-000	CUSHION, FRONT	2	
8	44542-38300-000	CUSHION, FUEL TANK REAR NO. 1	1	
9	09116-06084-000	BOLT, FUEL TANK REAR	2	
10	09180-06067-000	SPACER, FUEL TANK REAR	2	
11	08316-1006A-000	NUT	4	
12	34810H30100H000	GAUGE ASSY, FUEL LEVEL SENDER	1	



4



Fig. 30

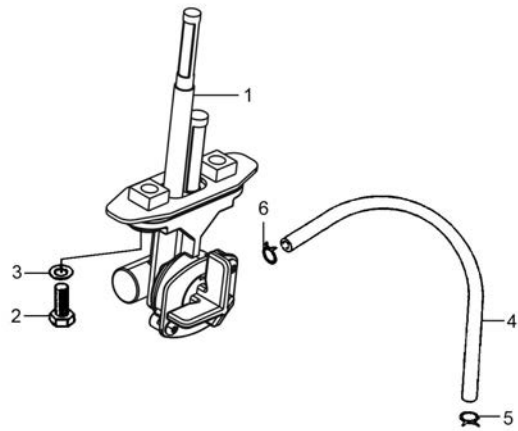


Fig.30 FUEL COCK (P03-S300-0009)

REF. No.	PART No.	DESCRIPTION	Q' TY	REMARKS
1	44300H36300H000	COCK ASSY, FUEL	1	
2	09128-06006-000	BOLT, FUEL COCK	2	
3	09168H06026H000	GASKET, FUEL COCK	2	
4	44420H05502H000	HOSE COMP, FUEL	1	
5	09401H08302H000	CLAMP	1	
6	09401-09101-000	CLAMP	1	

4



Fig. 31

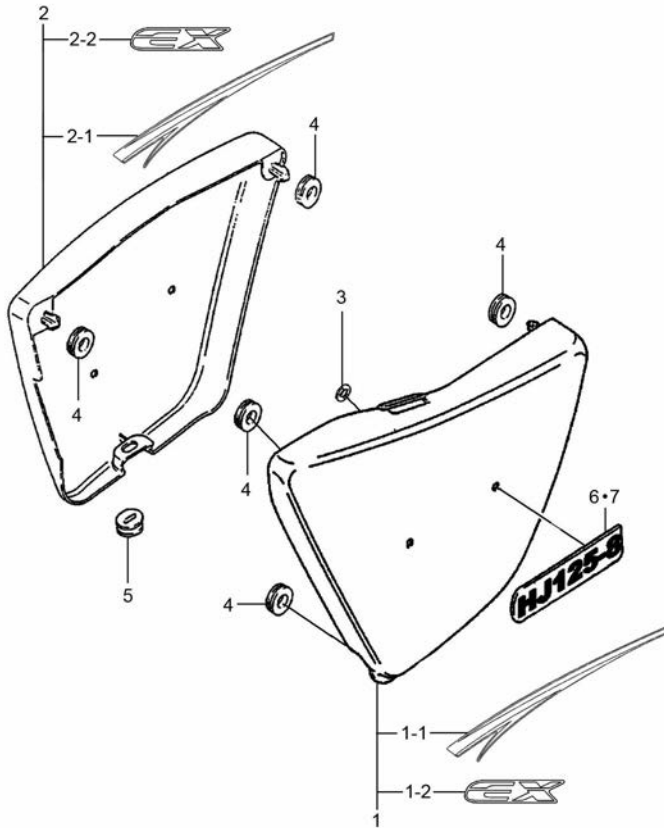


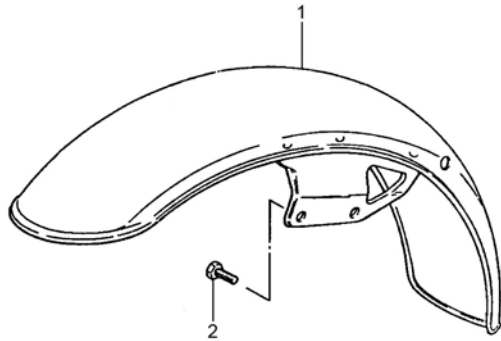
Fig.31 FRAME COVER (P03-S310-0089)

REF. No.	PART No.	DESCRIPTION	Q' TY	REMARKS
1	47021H053DOHF01	COVER SET, FRAME, L (RED)	1	
1	47021H053DOHF03	COVER SET, FRAME, L (PURPLE)	1	
1	47021H053DOHF04	COVER SET, FRAME, L (BLUE)	1	
1	47021H053DOHF06	COVER SET, FRAME, L (PEARL BLACK)	1	
1	47021H053DOHF07	COVER SET, FRAME, L (GREY)	1	
1-1	68142H30120HRG9	TAPE, FRAME COVER, L (RG9)	1	
1-1	68142H30120HRH2	TAPE, FRAME COVER, L (RH2)	1	
1-1	68142H30120HRH6	TAPE, FRAME COVER, L (RH6)	1	
1-1	68142H30120HRH1	TAPE, FRAME COVER, L (RH1)	1	
1-1	68142H30120HUR5	TAPE, FRAME COVER, L (UR5)	1	
1-2	68130H30110HMP7	NAME TAPE, FRAME COVER (MP7)	1	
2	47011H30130HF01	COVER SET, FRAME, R (RED)	1	
2	47011H30130HF03	COVER SET, FRAME, R (PURPLE)	1	
2	47011H30130HF04	COVER SET, FRAME, R (BLUE)	1	
2	47011H30130HF06	COVER SET, FRAME, R (PEARL BLACK)	1	
2	47011H30130HF07	COVER SET, FRAME, R (GREY)	1	
2-1	68141H30120HRG9	TAPE, FRAME COVER, R (RG9)	1	
2-1	68141H30120HRH2	TAPE, FRAME COVER, R (RH2)	1	
2-1	68141H30120HRH6	TAPE, FRAME COVER, R (RH6)	1	
2-1	68141H30120HRH1	TAPE, FRAME COVER, R (RH1)	1	
2-1	68141H30120HUR5	TAPE, FRAME COVER, R (UR5)	1	
2-2	68130H30110HMP7	NAME TAPE, FRAME COVER (MP7)	1	
3	09148-03003-000	NUT	4	
4	09320-08513-000	CUSHION	5	
5	09320-03004-000	CUSHION, FRAME COVER LOWER, R	1	
6	68141H11810H000	EMBLEM, FRAME COVER, L	1	
7	68131H11810H000	EMBLEM, FRAME COVER, R	1	

Fig. 32

Fig.32 FRONT FENDER (P03-S320-0022)

REF. No.	PART No.	DESCRIPTION	Q' TY	REMARKS
1	53110H30230H000	FENDER COMP, FRONT	1	
2	01570-0816A-000	HEXAGON HEAD BOLT	4	



4

Fig. 33

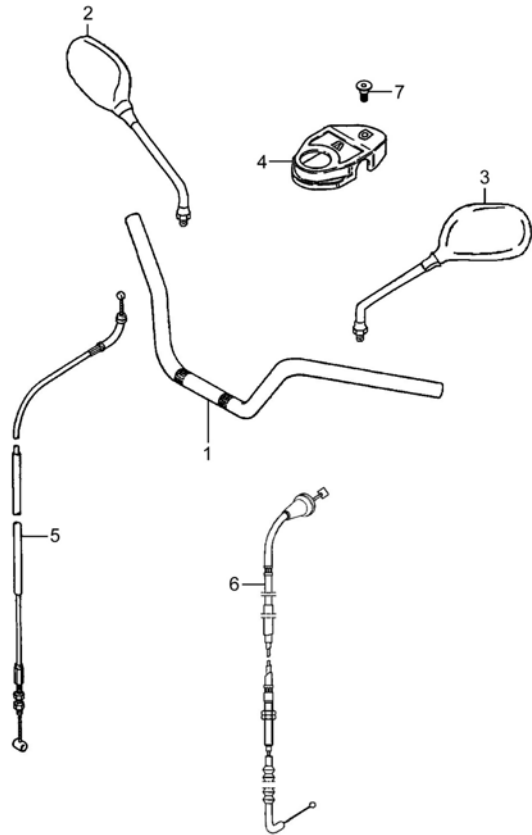


Fig.33 HANDLEBAR (P03-S330-0041)

REF. No.	PART No.	DESCRIPTION	Q' TY	REMARKS
1	56110H30200H000	HANDLEBAR COMP	1	
2	56500H05310H000	MIRROR ASSY, REAR VIEW, R	1	
3	56600H05310H000	MIRROR ASSY, REAR VIEW, L	1	
4	56171H11810H000	COVER, STEERING HEAD	1	
5	58300H30811H000	CABLE ASSY, THROTTLE	1	
6	58200H30820H000	CABLE ASSY, CLUTCH	1	
7	09139H06007H000	SCREW	1	

4

Fig. 34

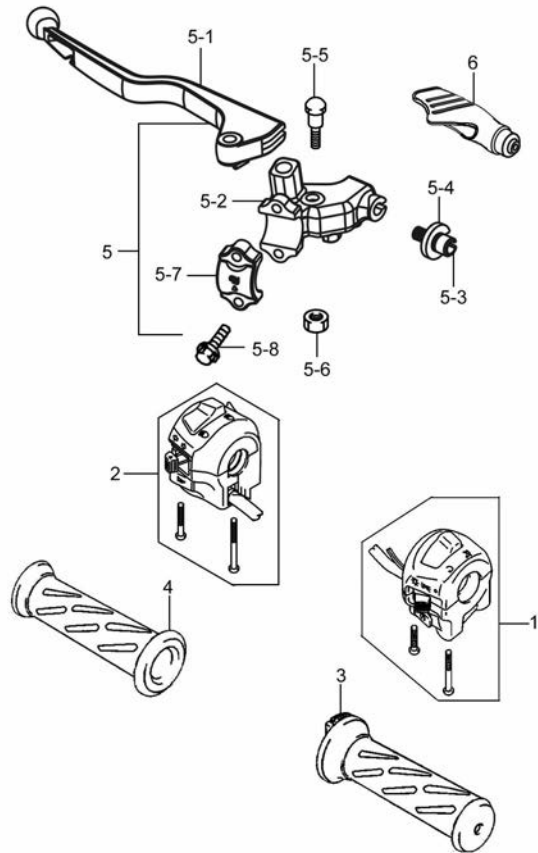


Fig.34 HANDLE SWITCH (P03-S340-0032)

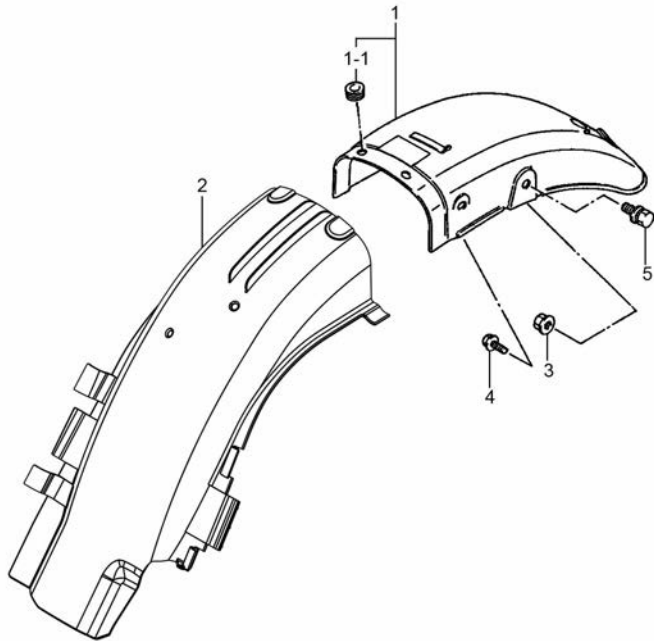
REF. No.	PART No.	DESCRIPTION	Q' TY	REMARKS
1	37200H30210H000	SWITCH ASSY, HANDLE, R	1	
2	37400H30210H000	SWITCH ASSY, HANDLE, L	1	
3	57110-05300-000	GRIP COMP, THROTTLE	1	
4	57211-46111-000	GRIP, L	1	
5	57500-053D2-000	LEVER ASSY, CLUTCH	1	
5-1	57621-053C0-000	LEVER, CLUTCH	1	
5-2	57511-053B0-000	HOLDER, LEVER	1	
5-3	57441-053B0-000	ADJUSTER, BRAKE CABLE	1	
5-4	57442-053B0-000	NUT, LOCK	1	
5-5	57431-45C01-000	BOLT, LEVER	1	
5-6	08319-2106A-000	U-NUT	1	
5-7	57512-45F00-000	BRACKET	1	
5-8	01547-0620B-000	BOLT	2	
6	57661-05300-000	COVER, CLUTCH LEVER	1	

4

Fig. 35

Fig.35 REAR FENDER (P03-S350-0018)

REF. No.	PART No.	DESCRIPTION	Q' TY	REMARKS
1	63011H30220H000	FENDER SET, REAR FENDER REAR	1	
1-1	63191-053G0-000	CUSHION, REAR FENDER REAR	2	
2	63112H30100H000	BODY, REAR FENDER FRONT	1	
3	08316-1008A-000	HEXAGON FLANGE NUT	2	
4	01580-0616B-000	BOLT	2	
5	01580-0825A-000	HEXAGON HEAD BOLT	2	



4

Fig. 36

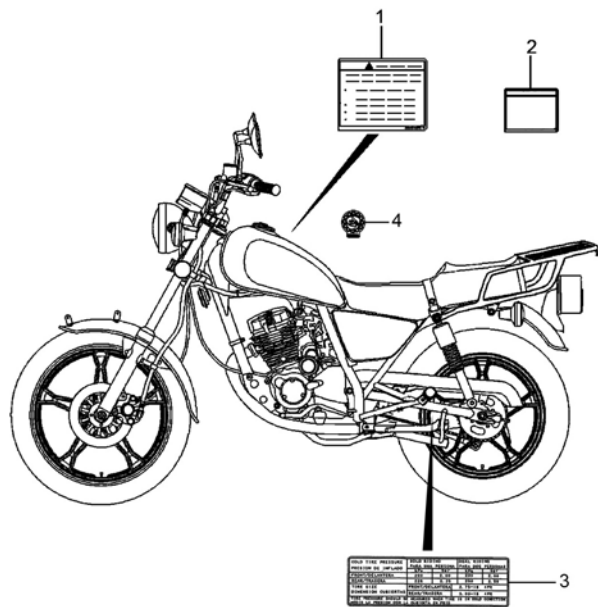


Fig.36 LABEL (P03-S370-0038)

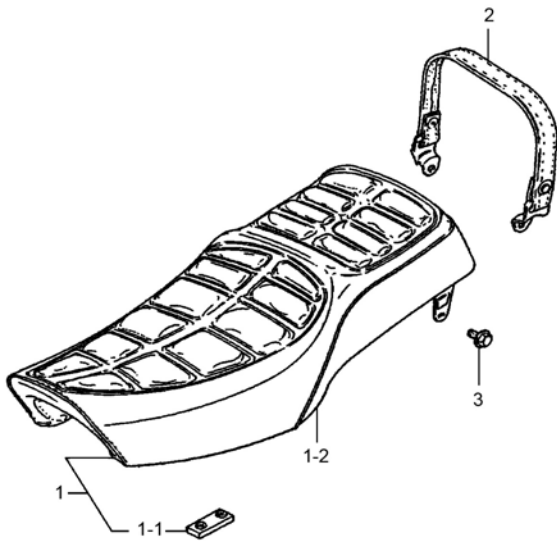
REF. No.	PART No.	DESCRIPTION	Q' TY	REMARKS
1	68319-29F01-000	LABEL, GENERAL WARNING	1	
2	99011H30222H000	MANUAL, OWNER'S	1	
3	68332H30200H000	LABEL, TIRE INFORMATION	1	
4	68464H30101H000	LABEL, TBS	1	

4

Fig. 37

Fig.37 SEAT (P03-S380-0013)

REF. No.	PART No.	DESCRIPTION	Q' TY	REMARKS
1	45100H05312H000	SEAT ASSY	1	
1-1	45148H12900H000	CUSHION, RECTANGEL	6	
1-2	45160H05310H000	COVER COMP, SEAT	1	
2	45180H30200H000	BAND ASSY, SEAT	1	
3	01550-0816B-000	HEXAGON BOLT WITH FLANGE	2	



4

Fig. 38

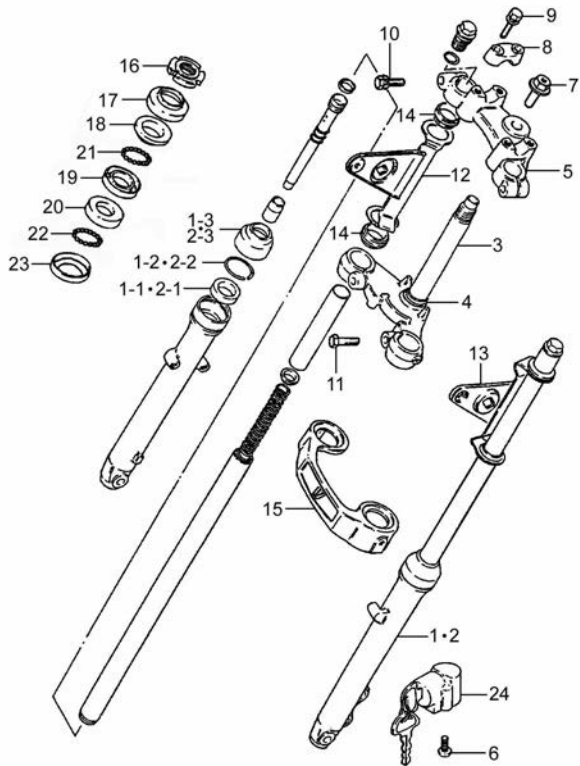


Fig.38 STEERING STEM (P03-S400-0046)

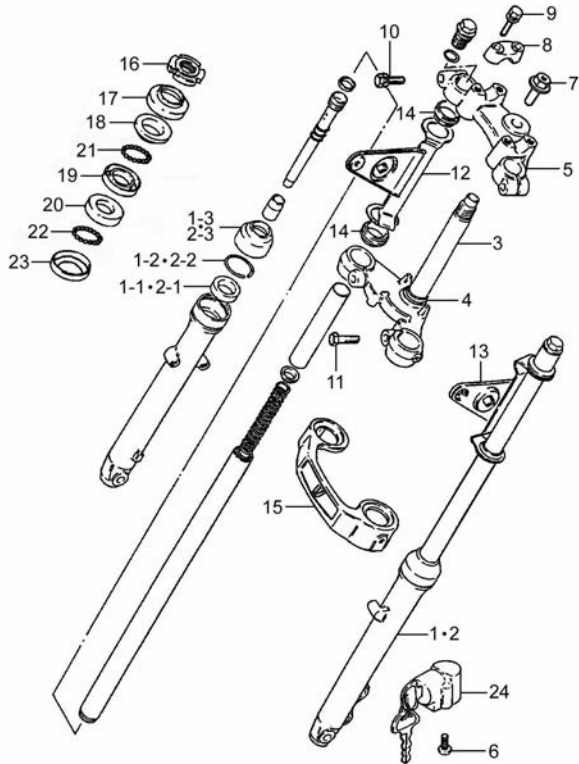
REF. No.	PART No.	DESCRIPTION	Q'TY	REMARKS
1	51103-05440-000	DAMPER ASSY, FRONT FORK, R	1	
1-1	51153-05320-000	SEAL, OIL	1	
1-2	51156-05320-000	RING, SNAP	1	
1-3	51173-05320-000	SEAL, DUST	1	
2	51104-05440-000	DAMPER ASSY, FRONT FORK, L	1	
2-1	51153-05320-000	SEAL, OIL	1	
2-2	51156-05320-000	RING, SNAP	1	
2-3	51173-05320-000	SEAL, DUST	1	
3	51410-05330-000	BRACKET COMP, LOWER	1	
4	51622H2A200H000	RACE, STEERING OUTER LOWER	1	
5	51311-05301-000	BRACKET, UPPER	1	
6	02112-3512A-000	CROSS RECESSED HEAD SCREW	2	
7	09103H10004H000	BOLT, HEXAGON	1	
8	56221-45FA0-000	HOLDER, HANDLE LOWER	2	
9	01274-08357-000	BOLT, HANDLE HOLDER	4	
10	01580-1040A-000	HEXAGON HEAD BOLT SET WITH WASHER	2	
11	01570-1235A-000	HEXAGON HEAD BOLT SET	2	
12	51530H30211H000	BRACKET COMP, HEADLAMP, R	1	
13	51540H30211H000	BRACKET COMP, HEADLAMP, L	1	
14	51553-11301-000	DAMPER, HEADLAMP BRACKET	4	
15	51871H30203H000	COVER, FRONT FORK	1	
16	51631-48H00-000	NUT, STEERING STEM	1	
17	51643H2A200H000	SEAL, STEERING DUST UPPER	1	
18	51621H2A200H000	RACE, STEERING OUTER, UPPER	1	
19	51611H2A201H000	RACE, STEERING INNER UPPER	1	
20	51612H2A200H000	RACE, STEERING INNER LOWER	1	
21	51610H2A200H000	BALL, STEERING STEEL UPPER	1	
22	51620H2A200H000	BALL, STEERING STEEL LOWER	1	

4

Fig. 38

Fig.38 STEERING STEM (P03-S400-0046)

REF. No.	PART No.	DESCRIPTION	Q' TY	REMARKS
23	51644-45FA0-000	SEAL, STEERING, LOWER	1	
24	51900-25311-000	LOCK ASSY, STEERING	1	



4



Fig. 39

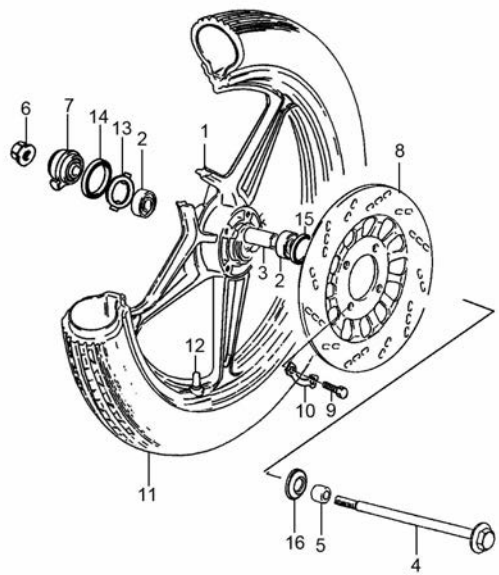


Fig.39 FRONT WHEEL (P03-S410-0032)

REF. No.	PART No.	DESCRIPTION	Q'TY	REMARKS
1	54111H30411H000	WHEEL, FRONT	1	
2	08133-6301B-000	BALL BEARING	2	
3	54731H2A000H000	SPACER, FRONT WHEEL BRG	1	
4	54711-05310-000	AXLE, FRONT	1	
5	54741H2A000H000	SPACER, FRONT AXLE, R	1	
6	08319-3112A-000	U-NUT	1	
7	54600H36410H000	BOX ASSY, SPEEDOMETER GEAR	1	
8	59211-05350-000	DISC, FRONT BRAKE	1	
9	59421-45F00-000	BOLT, FRONT BRAKE DISC	4	
10	09169H08003H000	WASHER	2	
11	55100H25300H000	TIRE COMP, FRONT	1	
12	43130H22500H000	VALVE ASSY, WHEEL RIM	1	
13	54661-18410-000	DRIVER, SPEEDOMETER GEAR	1	
14	54651-45F00-000	SEAL, SPDOM GEAR OIL	1	
15	54742-45F00-000	SEAL, FRONT HUB	1	
16	54892-45F00-000	COVER, FRONT HUB DUST SEAL	1	

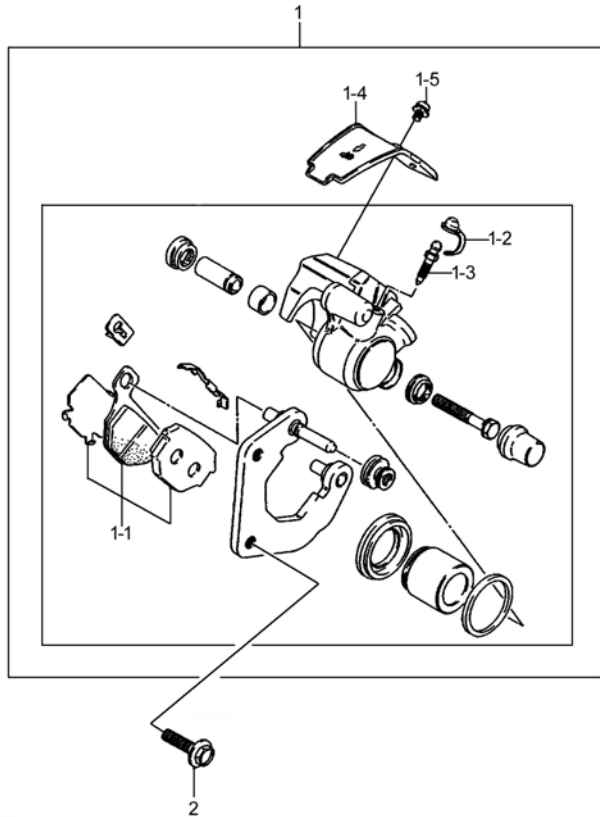
4



Fig. 40

Fig.40 FRONT CALIPER (P03-S420-0011)

REF. No.	PART No.	DESCRIPTION	Q' TY	REMARKS
1	59037H29B2AH000	CALIPER SET, FRONT	1	
1-1	59300H36Y10H000	PAD SET	1	
1-2	55156-26F10-000	CAP, BLEEDER	1	
1-3	59121-26F10-000	BLEEDER	1	
1-4	59313-13001-000	PROTECTOR, CALIPER	1	
1-5	02112-7512A-000	SCREW	1	
2	01550-0830B-000	HEXAGON BOLT WITH FLANGE	2	



4

Fig. 41

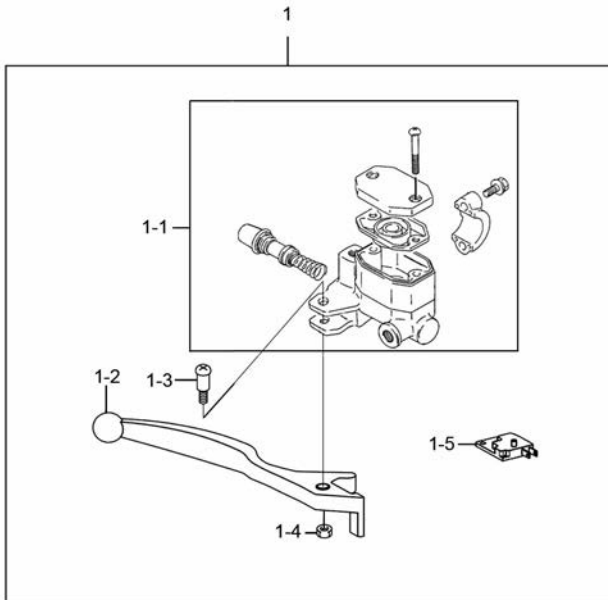


Fig.41 FRONT BRAKE CYLINDER (P03-S430-0012)

REF. No.	PART No.	DESCRIPTION	Q' TY	REMARKS
1	59064H053S0H000	CYLINDER SET, FRONT MASTER	1	
1-1	59600-053D0-000	CYLINDER ASSY, FRONT MASTER	1	
1-2	57421H45F10H000	LEVER, BRAKE, R	1	
1-3	57321-45F20-000	SCREW, BRAKE PIVOT	1	
1-4	57433-09F00-000	NUT, BRAKE LEVER PIVOT	1	
1-5	57460-17C01-000	SWITCH ASSY, STOP	1	

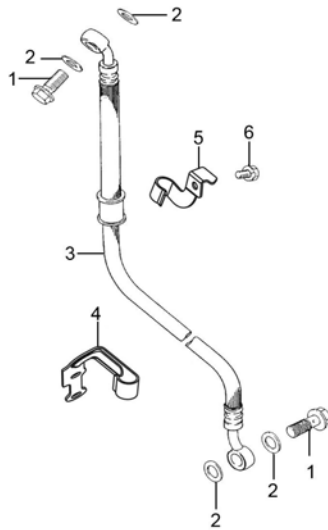
4



Fig. 42

Fig.42 HOSE,FRONT BRAKE (P03-S435-0015)

REF. No.	PART No.	DESCRIPTION	Q' TY	REMARKS
1	09360-10039-000	BOLT, BRAKE FLUID	2	
2	09161-10009-000	WASHER, BRAKE FLUID	4	
3	59480H30330H000	HOSE COMP, FRONT BRAKE	1	
4	59268H26H10H000	CLAMP, BRAKE HOSE	1	
5	59246H26H21H000	CLAMP, FR BRAKE HOSE	1	
6	01570-0612A-000	HEXAGON HEAD BOLT	1	



4



Fig. 43

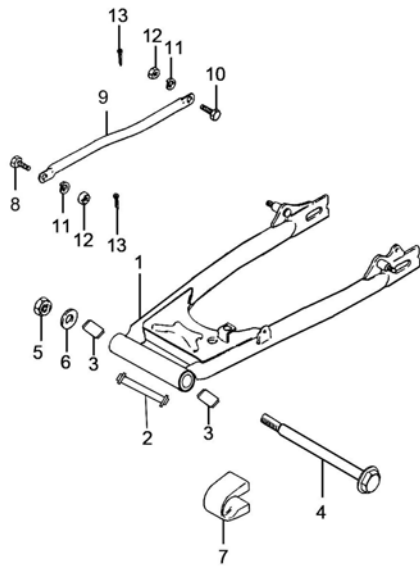


Fig.43 REAR SWINGING ARM (P03-S440-0008)

REF. No.	PART No.	DESCRIPTION	Q' TY	REMARKS
1	61100H30100H000	SWINGINGARM COMP, REAR	1	
2	61270H45F00H000	LOCALIZER SET, BUSH	1	
3	61200H45F00H000	SPACER, RR SWGARM PIVOT	2	
4	61211-45F10-000	SHAFT, RR SWGARM PIVOT	1	
5	08319-2114A-000	U-NUT	1	
6	08322-0114A-000	PLAIN WASHER	1	
7	61273H05300H000	BUFFER, CHAIN TOUCH DEFENSE	1	
8	09111-08012-000	BOLT, REAR TORQUELINK FRONT	1	
9	64310-05300-000	TORQUELINK COMP, REAR	1	
10	09111-08013-000	BOLT	1	
11	09162-08008-000	LOCK WASHER, RR TORQUELINK	2	
12	09140H08001H000	NUT	2	
13	04111-2020A-000	COTTER PIN	2	

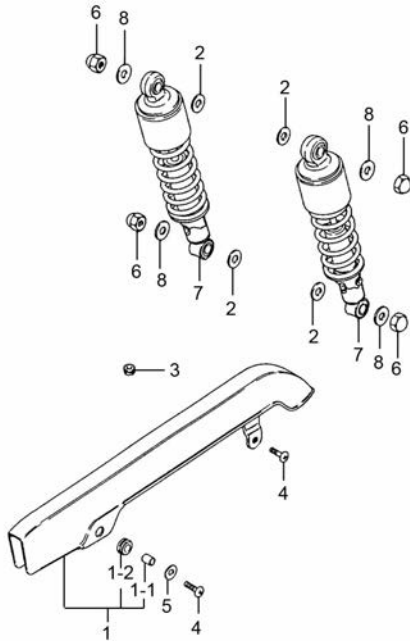
4



Fig. 44

Fig.44 REARSHOCK ABSORBER (P03-S450-0025)

REF. No.	PART No.	DESCRIPTION	Q' TY	REMARKS
1	61031H30211H000	CASE SET, CHAIN	1	
1-1	09180-06259-000	SPACER, CHAIN CASE FRONT	1	
1-2	09320H08005H000	CUSHION	1	
2	09160-12090-000	WASHER, RR SHK ABS INNER	4	
3	09320-08020-000	CUSHION, CHAIN CASE FR INNER	1	
4	09103H06007H000	BOLT	2	
5	09160-06027-000	WASHER, CHAIN CASE FRONT	1	
6	09145H10003H000	NUT, CAP	4	
7	62100H05310H000	ABSORBER ASSY, REAR SHOCK	2	
8	09160H10001H000	WASHER, PLAIN	4	



4



Fig. 45

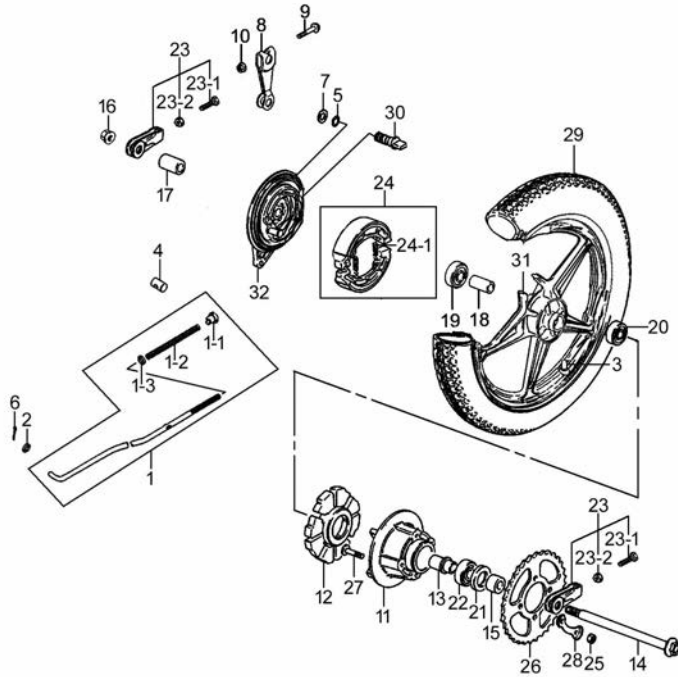


Fig.45 REAR WHEEL (P03-S460-0036)

REF. No.	PART No.	DESCRIPTION	Q'TY	REMARKS
1	43031H30120H000	ROD SET, REAR BRAKE	1	
1-1	09150-06001-000	NUT, REAR BRAKE ROD ADJUSTER	1	
1-2	09440H09007H000	SPRING, COMPRESSION	1	
1-3	08322-0106A-000	WASHER, PLAIN	1	
2	08322-0106A-000	WASHER, PLAIN	1	
3	43130H22500H000	VALVE ASSY, WHEEL RIM	1	
4	09209-11002-000	PIN, REAR BRAKE ROD LEVER	1	
5	09280-14003-000	O-RING, REAR BRAKE CAM	1	
6	04111-2015A-000	COTTER PIN	1	
7	09160-14001-000	WASHER, REAR BRAKE CAM	1	
8	64451H05300H000	LEVER, REAR BRAKE CAM	1	
9	01550-0635A-000	BOLT	1	
10	08316-1006A-000	NUT	1	
11	64610-05310-000	DRUM COMP, RR SPROCKET MOUNTING	1	
12	64651-45F00-000	ABSORBER, REAR HUB SHOCK	1	
13	64733-05301-000	RETAINER, RR SPROCKET DRUM	1	
14	64711H2A000H000	AXLE, REAR	1	
15	09180-15042-000	SPACER, REAR AXLE, L	1	
16	08319-3114A-000	U-NUT	1	
17	09180-15002-000	SPACER, REAR AXLE, R	1	
18	64731-45F00-000	SPACER, REAR HUB BEARING	1	
19	08144-6302B-000	BALL BEARING	1	
20	08143-6202B-000	BALL BEARING	1	
21	09285H28001H000	SEAL, OIL	1	
22	08113-6204B-000	BALL BEARING	1	
23	61041H36020H000	ADJUSTER SET, CHAIN	2	
23-1	09104-080A6-000	BOLT	1	
23-2	08310-0008A-000	HEXAGON NUT	1	
24	54400H7DY00H000	SHOE COMP, BRAKE	1	

4

Fig. 45

Fig.45 REAR WHEEL (P03-S460-0036)

REF. No.	PART No.	DESCRIPTION	Q' TY	REMARKS
24-1	55421-45F10-000	SPRING, BRAKE SHOE	2	
25	08310-0008A-000	HEXAGON NUT	4	
26	64511H30200H000	SPROCKET, REAR	1	
27	09119-08043-000	BOLT, RR SPROCKET	4	
28	09169-08012-000	WASHER, REAR SPROCKET	2	
29	65110H30110H000	TIRE COMP, REAR	1	
30	54441H45FA0H000	CAM, FRONT BRAKE	1	
31	64150H30410H000	WHEEL COMP, REAR	1	
32	64210H2E030H000	PANEL COMP, REAR BRAKE	1	

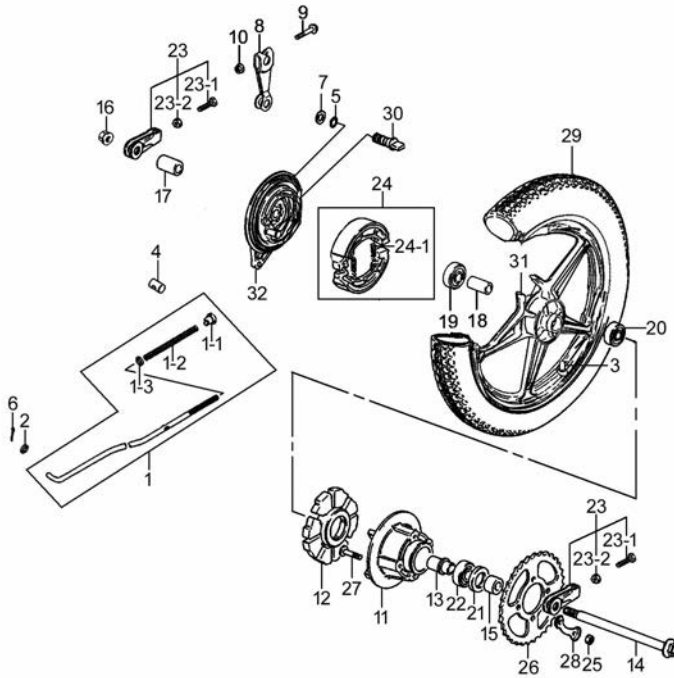


Fig. 46

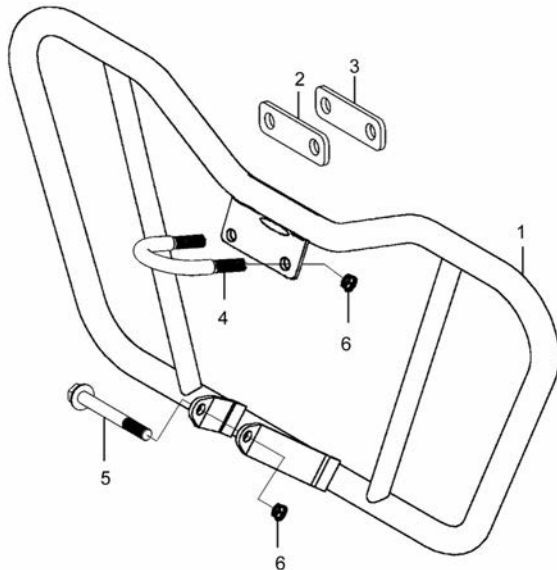


Fig.46 BUMPER COMP (P03-S470-0004)

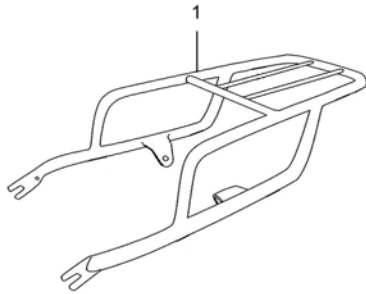
REF. No.	PART No.	DESCRIPTION	Q' TY	REMARKS
1	46410H05520H000	BUMPER	1	
2	46423H05500H000	BRACKET, FRONT BUMPER	1	
3	94219H22500H000	CUSHION, FRONT BUMPER	1	
4	46421H05510H000	BOLT, U SHAPE	1	
5	41919-45F00-000	BOLT, ENG MTG LOWER	1	
6	08319-3108A-000	NUT	3	

4

Fig. 47

Fig.47 CARRIER (P03-S480-0011)

REF. No.	PART No.	DESCRIPTION	Q' TY	REMARKS
1	46310H05301H000	CARRIER COMP, REAR	1	



4



PART NO.	FIG. NO. – REF. NO.	PART NO.	FIG. NO. – REF. NO.	PART NO.	FIG. NO. – REF. NO.	PART NO.	FIG. NO. – REF. NO.
00000		01550-0628A-000	17-2	08110-60060-000	14-2	08319-3112A-000	39-6
		01550-0635A-000	45-9	08110-62040-000	14-6	08319-3114A-000	45-16
		01550-0816B-000	37-3	08113-6204B-000	45-22	08321-01087-000	22-3
		01550-0830B-000	40-2	08133-6301B-000	39-2	08322-0106A-000	45-1-3
		01550-1025B-000	28-8	08143-6202B-000	45-20	08322-0106A-000	45-2
01204-08207-000	22-2	01550-1045A-000	28-9	08144-6302B-000	45-19	08322-01087-000	22-4
01274-08357-000	38-9	01570-0612A-000	42-6	08211-12181-000	16-6	08322-0108A-000	01-20
01500-0610A-000	14-10	01570-0816A-000	32-2	08211-14241-000	07-2	08322-0110A-000	10-4
01500-0625A-000	15-6	01570-1235A-000	38-11	08211-15251-000	14-1-8	08322-0110A-000	27-2
01500-0820A-000	15-12	01580-0616B-000	09-2	08211-15301-000	14-4-13	08322-0114A-000	43-6
01500-0825A-000	16-2	01580-0616B-000	35-4	08211-16241-000	16-3-10	08331-31129-000	15-9-6
01547-0525A-000	18-3	01580-0825A-000	35-5	08211-16301-000	16-5	08331-31149-000	15-9-2
01547-0612A-000	07-1	01580-1040A-000	38-10	08211-20271-000	14-4-2	08331-31169-000	16-3-12
01547-0612A-000	01-17	02112-0418A-000	15-14	08310-0006A-000	01-14	08331-31209-000	14-1-4
01547-0612A-000	03-4	02112-0650A-000	03-5	08310-0006A-000	24-3	08331-31209-000	14-4-7
01547-0616A-000	11-13	02112-0695A-000	03-6	08310-0006A-000	27-8	08331-31209-000	16-3-7
01547-0616A-000	11-14	02112-1520A-000	20-9	08310-0008A-000	45-23-2	08361-3506A-000	20-3
01547-0616A-000	20-5	02112-3512A-000	38-6	08310-0008A-000	45-25	09100H05004H000	18-2
01547-0616A-000	03-23	02112-7512A-000	40-1-5	08310-00107-000	23-7	09100H06022H000	15-8
01547-0616A-000	04-19	02122-0306B-000	29-5	08310-0010A-000	23-6	09103-08527-000	25-16
01547-0620A-000	01-15	02122-05127-000	22-1-2	08313-2006B-000	20-7	09103H06007H000	44-4
01547-0620B-000	34-5-8	02122-0512A-000	05-9	08316-03920-000	21-1-15	09103H08009H000	01-10
01547-0622A-000	02-3	02122-0628A-000	12-3	08316-1006A-000	29-11	09103H08013H000	01-19
01547-0625A-000	03-2	02132-05257-000	21-6	08316-1006A-000	45-10	09103H08013H000	26-3
01547-0625A-000	04-14	02142-0512A-000	09-1-1	08316-1006B-000	25-11	09103H08015H000	03-17
01547-0628A-000	04-16	02162-0512B-000	26-4	08316-1008A-000	35-3	09103H10003H000	03-19
01547-0640A-000	04-2	03241-0416A-000	09-1-2	08316-1010A-000	28-5	09103H10004H000	38-7
01547-0650A-000	04-4	04111-2015A-000	28-6-4	08319-2106A-000	34-5-6	09104-080A6-000	45-23-1
01547-0655A-000	03-9	04111-2015A-000	28-7-4	08319-2114A-000	43-5	09108H06009H000	01-11
01547-0660A-000	04-8	04111-2015A-000	45-6	08319-3108A-000	01-21	09108H08012H000	02-6
01550-0612A-000	11-4	04111-2020A-000	27-5	08319-3108A-000	26-6	09108H08013H000	02-5
01550-0616A-000	21-2	04111-2020A-000	43-13	08319-3108A-000	03-18	09111-08012-000	43-8
01550-0620A-000	11-2	04111-2525A-000	27-16	08319-3108A-000	46-6	09111-08013-000	43-10
01550-0622A-000	13-4-1	04221-04109-000	15-4	08319-3110A-000	27-10	09116-06008-000	26-8
01550-0628A-000	01-3	07130-0825A-000	10-3	08319-3110A-000	03-20	09116-06084-000	29-9

5

5

PART NO.	FIG. NO. – REF. NO.	PART NO.	FIG. NO. – REF. NO.	PART NO.	FIG. NO. – REF. NO.	PART NO.	FIG. NO. – REF. NO.
09116-06167-000	24-2	09181-19261-000	07-9	09280H33000H000	17-1-7	09440H09007H000	45-1-2
09119-08043-000	45-27	09181H06001H000	04-1-6	09280H34002H000	01-12	09440H13004H000	07-13
09128-06004-000	20-2	09181H10190H000	06-1	09280H35001H000	03-12	09440H33000H000	13-4-3
09128-06006-000	30-2	09181H12180H000	07-8	09280H62001H000	04-17	09443-14015-000	27-9
09139H06007H000	33-7	09181H16200H000	15-9-1	09283H07001H000	04-1-7	09443-19020-000	27-14
09140H08001H000	43-12	09181H17240H000	14-4-9	09283H14001H000	15-10	09443H07004H000	27-6
09145H10003H000	44-6	09181H20270H000	14-1-10	09283H16001H000	16-4	09471-12020-000	22-1-1-3
09148-03003-000	31-3	09181H20270H000	16-3-6	09283H16001H000	04-3	09471-12063-000	22-1-1-4
09150-06001-000	45-1-1	09200-06033-000	28-6-3	09283H20001H000	14-5	09471-12177-000	23-1-2
09160-06027-000	44-5	09200-06033-000	28-7-3	09283H34001H000	05-2	09471-12177-000	23-2-2
09160-10059-000	28-3	09205H03001H000	04-1-4	09285H28001H000	45-21	09471-12177-000	23-3-2
09160-10501-000	23-5	09206H08004H000	04-5	09289H06001H000	07-7	09471-12177-000	23-4-2
09160-12090-000	44-2	09206H10007H000	02-1	09320-03004-000	31-5	09471-12196-000	21-1-6
09160-14001-000	45-7	09206H10007H000	03-1-1	09320-08020-000	44-3	09471H12030H000	24-1-2
09160-19006-000	28-6-2	09206H10007H000	04-20	09320-08513-000	31-4	09471H12090H000	21-1-7
09160-19006-000	28-7-2	09206H10008H000	01-18	09320H08005H000	26-10	09482H33000H000	01-2
09160H08021H000	07-19	09209-11002-000	45-4	09320H08005H000	44-1-2	09491H88070H000	08-1-22
09160H10001H000	44-8	09247-12104-000	04-12	09360-10039-000	42-1	09800H20015H000	26-11
09160H12004H000	01-8	09247H12105H000	03-11	09381-14001-000	05-3		
09161-10009-000	42-2	09259-26016-000	04-9	09401-06101-000	11-9		
09162-08008-000	43-11	09259H99002H000	04-7	09401-09101-000	30-6		
09164H12001H000	07-22	09261H10005H000	06-5-1	09401-15101-000	11-6		
09168-06018-000	01-16	09262H15009H000	14-3	09401-15404-000	11-7		
09168-08032-000	01-6	09262H17001H000	13-5	09401H08302H000	30-5		
09168-12002-000	03-13	09262H28001H000	05-1-2	09401H15201H000	09-4		
09168-12002-000	04-13	09262H28002H000	05-1-3	09404-06030-000	25-7	11110H330J1H000	01-1
09168H06026H000	30-3	09263H15001H000	14-7	09407-05403-000	25-4	11141H33010H000	01-9
09169-05012-000	26-20	09280-14003-000	45-5	09407-12402-000	25-2	11151H33001H000	01-7
09169-08012-000	45-28	09280-22008-000	04-21	09407-14403-000	11-17	11161H33000H000	07-21
09169H08003H000	39-10	09280H09008H000	12-2	09407-14403-000	25-5	11171H33080H000	01-4
09180-06038-000	26-9	09280H09009H000	04-1-2	09407-18402-000	11-16	11181H33001H000	01-5
09180-06067-000	29-10	09280H13002H000	03-8	09407-18402-000	25-6	11210H33042H0B0	02-2
09180-06259-000	44-1-1	09280H17001H000	07-25	09420H04002H000	05-1-1	11241H33000H000	02-4
09180-15002-000	45-17	09280H18002H000	04-7-1	09440H04010H000	15-2	11300H33YA0H000	03-1
09180-15042-000	45-15	09280H20003H000	07-10	09440H04013H000	06-5-3	11342H33Y71H000	04-1

10000

PART NO.	FIG. NO. – REF. NO.	PART NO.	FIG. NO. – REF. NO.	PART NO.	FIG. NO. – REF. NO.	PART NO.	FIG. NO. – REF. NO.
11351H33033H000	04-11	12851H33000H000	07-17-1	13295H21D20H000	08-1-14	20000	
11361H33561H000	04-15	12852H33000H000	07-17-2	13341H11510H000	08-1-4		
11411H33000H000	03-3	12862H33010H0A0	07-24	13383H30210H000	08-1-21		
11421H33B00H000	03-21	12871H33010H000	07-18	13683H30120H000	08-1-1		
11430H33000H000	03-10	12873H33030H000	07-20	13684H21D20H000	08-1-12		
11431H33001H000	03-10-1	12911H33030H000	07-11	13700H30103H000	09-1	21111H33000H000	05-7
11432H33000H000	03-10-2	12912H33000H000	07-12	13781H2A300H000	09-1-3	21210H33030H000	13-3
11433H33000H000	03-10-3	12921H33001H000	07-5	13830H11200H000	09-1-5	21346H33000H000	13-8
11441H33030H000	04-18	12922H33001H000	07-6	13851H30100H000	09-3	21410H33070H000	13-4
11481H33000H000	03-7	12931H33000H000	07-4	13881H2A300H000	09-1-4	21420H33000H000	13-4-5
11482H33000H000	04-6	12932H33010H000	07-3	14036H11850H000	10-1	21421H33000H000	13-4-6
11483H33000H000	04-10	13110H33042H000	01-13	14181H11200H000	10-2	21451H33000H000	13-4-7
12100H33020H025	05-14	13112H22500H000	08-2	16052H33070H000	05-8	21461H33000H000	13-4-4
12100H33020H050	05-13	13113H22502H000	08-3	16400H35031H000	12-1	21471H33020H000	13-4-2
12111H33023H025	05-14-1	13200H30212H000	08-1	16511H33070H000	05-8-1	21481H33000H000	13-6
12111H33023H050	05-13-1	13213H05200H000	08-1-16	16520H21D01H000	03-14	23121H33020H000	13-2
12111H33023H0B0	05-5	13222H05200H000	08-1-3	16521H33040H000	05-8-2	23131H33030H000	13-1
12140H33060H000	05-6	13225H05200H000	08-1-15	16531H33040H000	05-8-3	23270H33B00H000	04-1-1
12140H33060H025	05-14-2	13226H05200H000	08-1-20	16532H33040H000	05-8-5	23281H33011H000	04-1-3
12140H33060H050	05-13-2	13231H05200H000	08-1-19	16541H33001H000	03-15	24120H33061H000	14-4
12151H3E000H000	05-4	13232H05200H000	08-1-2	16542H33000H000	03-16	24121H33111H000	14-4-1
12200H33Y20H000	05-1	13234H05200H000	08-1-18	16551H33040H000	05-8-4	24130H33041H000	14-1
12612H33010H000	06-2	13241H05200H000	08-1-5	16561H33000H000	05-12	24131H33031H000	14-1-1
12620H33001H000	06-7	13245H05200H000	08-1-24	16571H33000H000	05-11	24210H3F000H000	14-1-9
12630H33001H000	06-5	13251H05200H000	08-1-7	16581H33000H000	05-10	24221H33000H000	14-1-7
12633H33000H000	06-5-2	13252H05200H000	08-1-11	16581H33000H000	13-7	24231H33010H000	14-1-2
12651H33010H000	06-3	13255H05200H000	08-1-8	18410H30200H000	11-12	24232H33000H000	14-1-3
12662H33010H000	06-4	13257H05200H000	08-1-25	18441H50100H000	11-15	24232H33000H000	14-4-6
12681H33010H000	06-6	13258H05200H000	08-1-26	18442H30200H000	11-11	24241H33000H000	14-1-5
12710H33030H0F0	07-16	13261H05200H000	08-1-6	18450H12E60H000	11-1	24251H33000H000	14-1-6
12731H33010H0B0	07-15	13262H05200H000	08-1-13	18461H30201H000	11-8	24301H33000H000	14-4-12
12741H33001H000	07-14	13263H05200H000	08-1-23	18463H30200H000	11-10	24302H33000H000	14-4-14
12751H33000H0B0	05-1-4	13264H05200H000	08-1-17	18572-26H10-000	26-13	24311H33010H000	14-4-10
12840H33011H000	07-17	13266H05200H000	08-1-10	18610H21F00H000	11-3	24312H33000H000	14-4-11
12843H33031H0A0	07-23	13272H05200H000	08-1-9	18712H21F00H000	11-5	24321H33020H000	14-4-3

PART NO.	FIG. NO. – REF. NO.	PART NO.	FIG. NO. – REF. NO.	PART NO.	FIG. NO. – REF. NO.	PART NO.	FIG. NO. – REF. NO.	
24331H33010H000	14-4-8	30000		34174H30811H000	21-1-4	37110-11800-000	25-13	
24341H33010H000	14-4-5			34187H28310H000	21-1-10	37200H30210H000	34-1	
24351H33000H000	14-4-4			34189H28310H000	21-1-11	37400H30210H000	34-2	
24741H33000H000	03-22			34193H05300H000	21-1-12	37720H33041H000	15-13	
25211H33000H000	15-17			34210H11810H000	21-1-2	37740H30J00H000	25-14	
25231H33000H000	15-18	31100H33050H000	17-1	34293H05300H000	21-1-13	38500H21401H000	25-15	
25241H33000H000	15-19	31130H33000H000	17-1-1	34810H30100H000	29-12	38610-04H02-000	23-10	
25310H33011H000	15-3	31133H33000H000	17-1-2	34910H30801H000	21-3	39411H30230H000	25-17	
25311H33000H000	15-1	31135H33000H000	17-1-3	34940H30812H000	21-5	39420H17311H000	25-18	
25350H33011H000	15-16	31156H33050H000	17-1-4	34950H05320H000	21-1-9			
25351H33010H000	15-7	31361H33000H000	17-1-6	34968H36010H000	21-1-14	40000		
25381H33010H000	15-5	31362H33000H000	17-1-5	35011H3080AH000	22-1			
25411H33000H000	15-15	31800-49110-000	20-1	35100H30802H000	22-1-1			
25500H33050H000	15-9	32100H2E000H000	18-1	35111H30800H000	22-1-1-1			
25510H33050H000	15-9-4	32101H330C0H000	18-1-1	35121H30801H000	22-1-1-2			
25531H33000H000	15-9-3	32102H2E000H000	18-1-2	35171H30801H000	22-1-1-5	41102H30Y71H000	26-1	
25561H33000H000	15-9-5	32111H33010H000	18-5	35172H30800H000	22-1-1-6	41540H30100H000	26-7	
25600H30100H000	15-11	32491H33010H000	18-4	35601H05320H000	23-1	41919-45F00-000	46-5	
26021H33030H000	16-3	32800H05523H000	20-4	35602H05320H000	23-2	41970H30200H000	26-12	
26211H33010H000	16-3-2	32900H2E010H000	20-6	35603H05320H000	23-3	41980H21F00H000	26-2	
26211H33030H000	16-3-1	33410H30200H000	20-8	35604H05320H000	23-4	41992H2E000H000	26-5	
26221H33000H000	16-3-3	33510-04H10-000	20-8-1	35612H05320H000	23-1-1	42100H21400H000	27-17	
26222H33000H000	16-3-4	33541H30200H000	20-8-2	35612H05320H000	23-4-1	42211H2A200H000	27-15	
26241H33000H000	16-3-5	33542H30200H000	20-8-3	35621H05320H000	23-8	42241-26H10-000	27-12	
26251H33000H000	16-3-8	33620H2E000H000	19-1	35632H05320H000	23-2-1	42278-45F00-000	10-1-1	
26252H33000H000	16-3-9	33652-05320-000	19-2	35632H05320H000	23-3-1	42310-05340-000	27-13	
26261H33000H000	16-3-11	33652-38000-000	19-3	35641H05320H000	23-9	42341-36H00-000	27-11	
26300H30100H000	16-1	33652H30100H000	25-8	35710H05352H000	24-1	43031H30120H000	45-1	
26352-01000-000	16-1-1	33810H33050H000	17-1-8	35712H05350H000	24-1-1	43110H30131H000	27-1	
26431H33000H000	04-1-5	33860H12600H000	19-4	35950H7A000H000	22-5	43130H22500H000	39-12	
27511H33030H000	14-8	34100H30813H000	21-1	36610H30231H000	25-1	43130H22500H000	45-3	
27521H33010H000	14-9	34110H11810H000	21-1-1	36651-05320-000	11-18	43159-45F00-000	27-7	
27600H2A010H114	14-11	34150H30810H000	21-1-3	36651-05320-000	25-3	43213-45F00-000	27-3	
27620H2A010H000	14-11-1	34152H30811H000	21-1-5	36651H12E01H000	25-9	43231-05302-000	27-4	
		34173H30810H000	21-1-8	37011H11810H000	25-12	43501H30112H000	28-1	

PART NO.	FIG. NO. – REF. NO.	PART NO.	FIG. NO. – REF. NO.	PART NO.	FIG. NO. – REF. NO.	PART NO.	FIG. NO. – REF. NO.
43502H05360H000	28-2	47021H053D0HF06	31-1	51810H44220H000	22-1-3	57511-053B0-000	34-5-2
43539-45F00-000	28-4	47021H053D0HF07	31-1	51821-36200-000	22-1-4	57512-45F00-000	34-5-7
43551-05500-000	28-1-1	47430H30202H000	26-21	51827-27303-000	22-1-5	57621-053C0-000	34-5-1
43551-05500-000	28-2-1	47432-05311-000	26-19	51871H30203H000	38-15	57661-05300-000	34-6
43600-05321-000	28-6	47440-05301-000	26-14	51900-25311-000	38-24	58200H30820H000	33-6
43612-33210-000	28-6-1	50000		53110H30230H000	32-1	58300H30811H000	33-5
43612-33210-000	28-7-1			54111H30411H000	39-1	58621-05300-000	21-4
43700-05321-000	28-7			54400H7DY00H000	45-24	59037H29B2AH000	40-1
44011H308B0HF01	29-1			54441H45FA0H000	45-30	59064H053S0H000	41-1
44011H308B0HF03	29-1			54600H36410H000	39-7	59121-26F10-000	40-1-3
44011H308B0HF04	29-1	51103-05440-000	38-1	54651-45F00-000	39-14	59211-05350-000	39-8
44011H308B0HF06	29-1	51104-05440-000	38-2	54661-18410-000	39-13	59246H26H21H000	42-5
44011H308B0HF07	29-1	51153-05320-000	38-1-1	54711-05310-000	39-4	59268H26H10H000	42-4
44200H053H0H000	29-2	51153-05320-000	38-2-1	54731H2A000H000	39-3	59300H36Y10H000	40-1-1
44281-12FH0-000	29-7	51156-05320-000	38-1-2	54741H2A000H000	39-5	59313-13001-000	40-1-4
44300H36300H000	30-1	51156-05320-000	38-2-2	54742-45F00-000	39-15	59421-45F00-000	39-9
44420H05502H000	30-4	51173-05320-000	38-1-3	54892-45F00-000	39-16	59480H30330H000	42-3
44542-36H10-000	29-3	51173-05320-000	38-2-3	55100H25300H000	39-11	59600-053D0-000	41-1-1
44542-38300-000	29-8	51311-05301-000	38-5	55156-26F10-000	40-1-2		
45100H05312H000	37-1	51410-05330-000	38-3	55421-45F10-000	45-24-1		
45148H12900H000	37-1-1	51455H30101H000	25-10	56110H30200H000	33-1	60000	
45160H05310H000	37-1-2	51530H30211H000	38-12	56171H11810H000	33-4		
45180H30200H000	37-2	51540H30211H000	38-13	56221-45FA0-000	38-8		
46310H05301H000	47-1	51553-11301-000	38-14	56500H05310H000	33-2		
46410H05520H000	46-1	51610H2A200H000	38-21	56600H05310H000	33-3		
46421H05510H000	46-4	51611H2A201H000	26-1-1	57110-05300-000	34-3	61031H30211H000	44-1
46423H05500H000	46-2	51611H2A201H000	38-19	57211-46111-000	34-4	61041H36020H000	45-23
47011H30130HF01	31-2	51612H2A200H000	26-1-2	57321-45F20-000	41-1-3	61100H30100H000	43-1
47011H30130HF03	31-2	51612H2A200H000	38-20	57421H45F10H000	41-1-2	61200H45F00H000	43-3
47011H30130HF04	31-2	51620H2A200H000	38-22	57431-45C01-000	34-5-5	61211-45F10-000	43-4
47011H30130HF06	31-2	51621H2A200H000	38-18	57433-09F00-000	41-1-4	61270H45F00H000	43-2
47011H30130HF07	31-2	51622H2A200H000	38-4	57441-053B0-000	34-5-3	61273H05300H000	43-7
47021H053D0HF01	31-1	51631-48H00-000	38-16	57442-053B0-000	34-5-4	62100H05310H000	44-7
47021H053D0HF03	31-1	51643H2A200H000	38-17	57460-17C01-000	41-1-5	63011H30220H000	35-1
47021H053D0HF04	31-1	51644-45FA0-000	38-23	57500-053D2-000	34-5	63112H30100H000	35-2

5

PART NO.	FIG. NO. – REF. NO.	PART NO.	FIG. NO. – REF. NO.
63191-053G0-000	35-1-1	90000	
64150H30410H000	45-31		
64210H2E030H000	45-32		
64310-05300-000	43-9		
64451H05300H000	45-8		
64511H30200H000	45-26	94219H22500H000	46-3
64610-05310-000	45-11	94631-05300-000	22-1-6
64651-45F00-000	45-12	95700-37400-000	26-17
64711H2A000H000	45-14	95729-053G0-000	26-18
64731-45F00-000	45-18	99011H30222H000	36-2
64733-05301-000	45-13		
65110H30110H000	45-29		
68111H11810H000	29-4		
68111H11820H000	29-6		
68130H30110HMP7	31-1-2		
68130H30110HMP7	31-2-2		
68131H11810H000	31-7		
68141H11810H000	31-6		
68141H30120HRG9	31-2-1		
68141H30120HRH1	31-2-1		
68141H30120HRH2	31-2-1		
68141H30120HRH6	31-2-1		
68141H30120HUR5	31-2-1		
68142H30120HRG9	31-1-1		
68142H30120HRH1	31-1-1		
68142H30120HRH2	31-1-1		
68142H30120HRH6	31-1-1		
68142H30120HUR5	31-1-1		
68311H30180H000	26-15		
68319-29F01-000	36-1		
68332H30200H000	36-3		
68389-45F00-000	26-16		
68464H30101H000	36-4		

5

Haojue HJ125-8 PARTS CATALOGUE

1st Edition

Published in 2022.4

DACHANGJIANG GROUP CO.,LTD.

No.5, Jiandabei Rd., Jiangmen City, Guangdong Province, P.R.China

Tel: 86-750-3288999 Fax: 86-750-3230989 Code: 529000

DACHANGJIANG GROUP COPYRIGHT POSSESSION.

DACHANGJIANG GROUP CO. , LTD.