

Haojue

PARTS CATALOGUE

KA150

PREFACE

This catalogue lists the spare parts used for the following model. Please do refer to the parts catalogue and indicate the parts number and the name listed in this catalogue correctly when you need to replace the spare parts.

Design Code	Factory Reference No. (Abbr. form in the catalogue)	Engine Reference No.	Engine Cad No.
KA150	KF2C3EU00F-XXE05	EG3EU24-E05	10091H3E028H000

一、 How to place an order for spare parts?

1. Required document:

The number must be provided as follow when order the spare parts:

- (a) The Engine parts: parts number and the Engine number
- (b) The Body parts: parts number and the Frame number

2. Revision

The Revised Version would be published at a suitable time when the parts Catalogue needed to be revised or renewed. In this case, the edition number would be marked on the cover. The parts would have some difference because our products are improved continuously and the modified parts no. will not be informed before the new edition published.

二、 How to use the parts catalogue?

1. Size

The unit of the parts' size indicated in the catalogue is 'mm', for example:

Parts name	Description
Bolt 6×12	Diameter 6mm, Length 12mm

O Ring D: 3.0, ID: 29.5	Section diameter 3mm, inner diameter 29.5mm
Bearing 35×72×17	Inner diameter 35mm, Outer diameter 72mm, Thickness 17mm

2. Abbr.

The meaning of the Abbreviations in the catalogue are as the followings:

D: Section diameter NT: Number of Teeth L: Length ID: Inner diameter W: Width

OPT: Optional T: Thickness OD: Outer diameter OS: Over size

STD: Standard US: Under size LH: Left hand side RH: Right hand side

3. Assy and the inner parts

The part number with a hyphen '-' in the front means this part could be supplied with the Assy (or the comp.), also could be supplied separately.

For example:

Item 1 CYLINDER HEAD ASSY

Item1-1 PIN,CAMSHAFT COVER

That means Item1-1 can be supplied with Item 1 and aslo can be supplied separately.

4. The illustrations in the catalogue are just for the purpose to distinguish the parts. There might be some discrepancies between the illustrations and the real parts.. Furthermore, the illustrations can not be used for the assembling purpose. When assembling, pls use the Service Manual of the relative models.

5. The instruction for the color parts

The catalogue lists are being supervised by color code.

For example: Assy,Fuel Tank 44100H22000HF01 F01 is the colour code and means "RED".

When place an order for the color parts, please use the correct parts number (with the color code), based on the compound color sheet of the models.

This catalogue is edited according to the datas before 2023-6-28. The modification after that time should refer to the latest SPS(Spare Parts Modification notice).

KA150 COLOR TABLE KF2C3EU00F–XXE05 5 COLOR STYLES

REF. NO.	DESCRIPTION	PART NO.	a07 RED	a09 GREEN	a12 BLUE	a13 WHITE	a14 BLACK	REMARKS
1	FUEL TANK SET	44011H2C030H000	F02	F04	F07	F08	F09	
2	TAPE SET, FUEL TANK	68110H2C000H000	SH5	SH8	UG6	R01	SH7	NOT SUPPLY
3	COVER SET, FUEL TANK, R	44017H2C090H000	F02	F04	F07	F08	F09	
4	COVER, FUEL TANK, R	44171H2C000H000	105	412	623	901	501	NOT SUPPLY
5	TAPE, FUEL TANK RIGHT COVER	68111H2C010H000	SH5	SH8	UG6	R01	SH7	NOT SUPPLY
6	COVER SET, FUEL TANK, L	44018H2C050H000	F02	F04	F07	F08	F09	
7	COVER, FUEL TANK, L	44181H2C000H000	105	412	623	901	501	NOT SUPPLY
8	TAPE, FUEL TANK LEFT COVER	68121H2C010H000	SH5	SH8	UG6	R01	SH7	NOT SUPPLY
9	LID, FRAME COVER, R	47112H2C000H000	838	838	838	838	838	
10	COVER, SIDE RIGHT, LWR	47121H2C000H000	838	838	838	838	838	
11	LID, FRAME COVER, L	47212H2C000H000	838	838	838	838	838	
12	COVER, SIDE LEFT, LWR	47221H2C000H000	838	838	838	838	838	
13	COVER, SEAT TAIL, CTR	45513H2C000H000	511	511	511	511	511	
14	COVER, SEAT TAIL, R	45511H2C000H000	511	511	511	511	511	

KA150 COLOR TABLE KF2C3EU00F–XXE05 5 COLOR STYLES

REF. NO.	DESCRIPTION	PART NO.	a07 RED	a09 GREEN	a12 BLUE	a13 WHITE	a14 BLACK	REMARKS
29	LOGO	68170H79001H000	SIL	SIL	SIL	SIL	SIL	
30	FENDER, FRONT	53111H2C000H000	A96	A94	A34	A36	A42	
31	WHEEL, FRONT	54111H2C001H000	A99	A98	A99	A99	A99	
32	WHEEL COMP, REAR	64150H2C002H000	A99	A98	A99	A99	A99	
33	DISC, FRONT BRAKE	59211H2C000H000	504	504	504	504	504	
34	CALIPER ASSY, FRONT	59300H2C001H000	105	105	105	105	105	
35	DAMPER ASSY, FRONT FORK, L	51104H2C000H000	518	518	518	518	518	
36	DAMPER ASSY, FRONT FORK, R	51103H2C000H000	518	518	518	518	518	
37	ABSORBER ASSY, REAR SHOCK	62100H2C000H000	105	105	105	105	105	
38	HANDLE, PILLION RIDER, R	46211H2C000H000	506	506	506	506	506	
39	HANDLE, PILLION RIDER, L	46231H2C000H000	506	506	506	506	506	

INFORMATION ILLUSTRATION INDEX

1

ENGINE & TRANSMISSION

2

ELECTRICAL

3

BODY

4

PARTS NUMBER INDEX

5

Fig. 1 CYLINDER HEAD&CYLINDER HEAD COVER (P05-S010-0044)

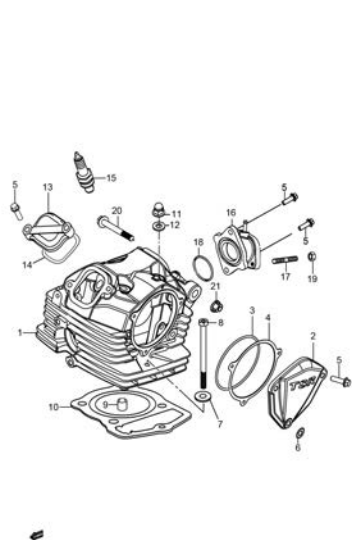


Fig. 2 CYLINDER (P05-S020-0008)

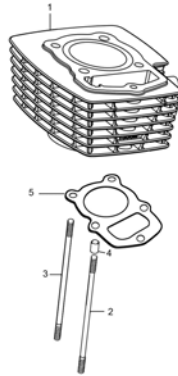


Fig. 3 CRANKCASE (P05-S030-0023)

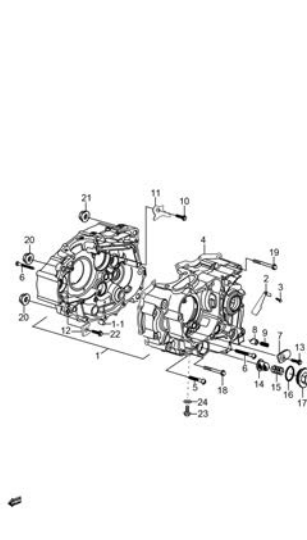


Fig. 4 CRANKCASE COVER (P05-S040-0043)

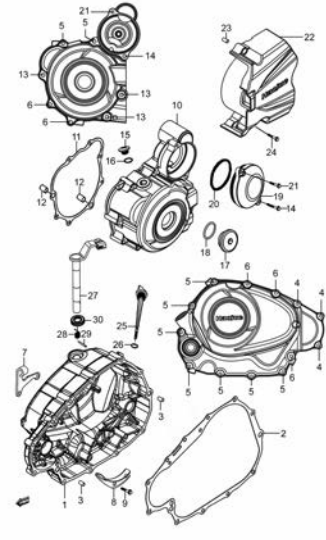


Fig. 5 CRANKSHAFT (P05-S050-0039)

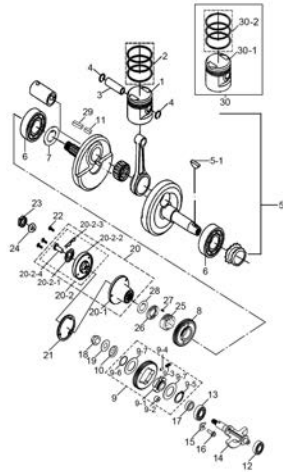


Fig. 6 STARTER CLUTCH (P05-S060-0006)

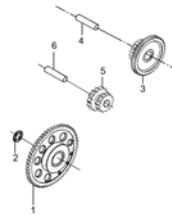


Fig. 7 CAMSHAFT-VALVE (P05-S070-0007)

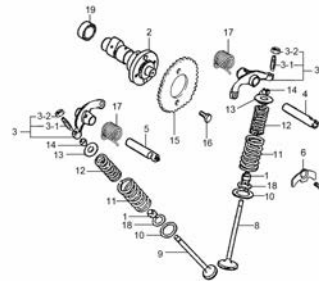
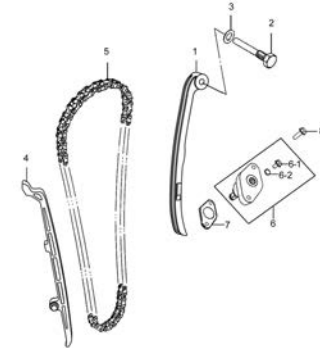


Fig. 8 CAM CHAIN (P05-S080-0012)



1

Fig. 9 CARBURETOR (P05-S090-0035)

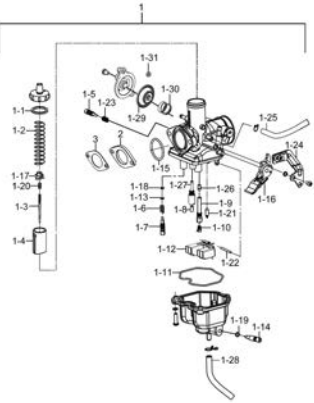


Fig. 10 AIR CLEANER (P05-S100-0019)

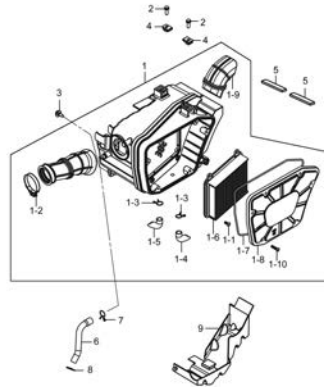


Fig. 11 MUFFLER (P05-S110-0036)

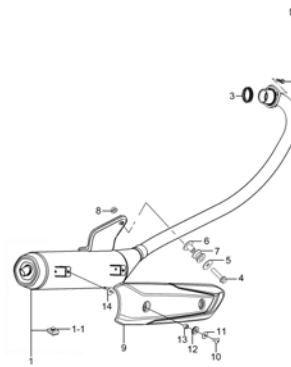


Fig. 12 2ND AIR VAVLE (P05-S120-0020)

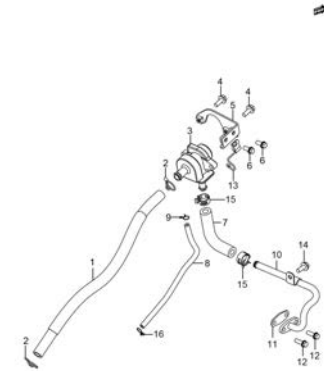


Fig. 13 OIL PUMP (P05-S130-0004)



Fig. 14 CLUTCH (P05-S140-0011)

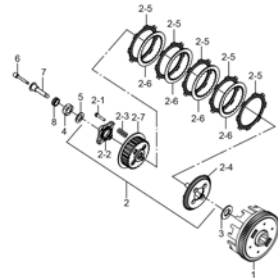


Fig. 15 TRANSMISSION (P05-S150-0042)

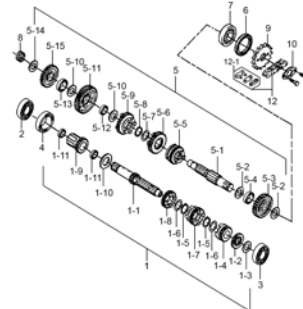


Fig. 16 GEAR SHIFTING (P05-S160-0018)

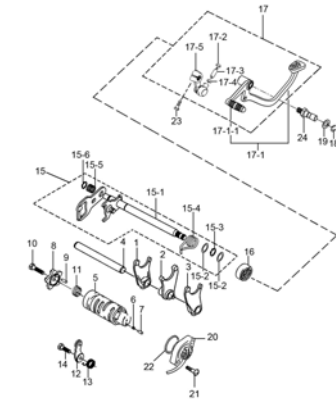


Fig. 25 REAR COMBINATION LAMP (P05-S240-0023)

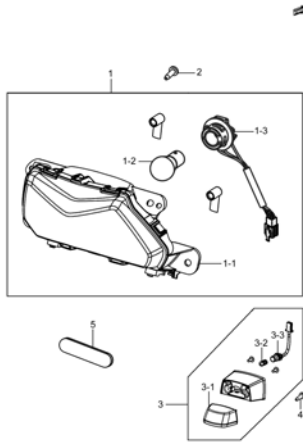


Fig. 26 WIRING HARNESS (P05-S250-0038)

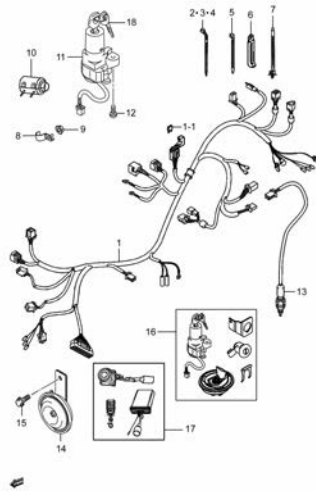


Fig. 27 FRAME (P05-S260-0052)

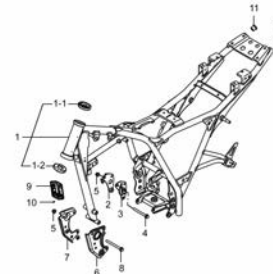


Fig. 28 STAND (P05-S270-0021)

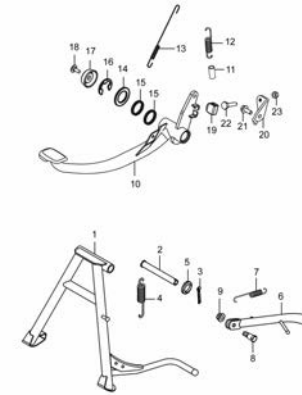


Fig. 29 FOOTREST (P05-S280-0029)

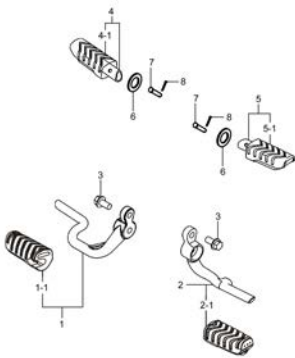


Fig. 30 FUEL TANK (P05-S290-0039)

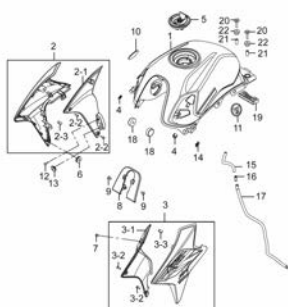


Fig. 31 FUEL COCK (P05-S300-0019)

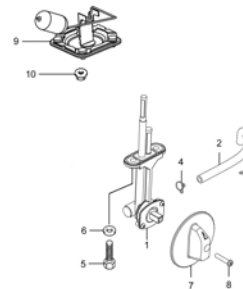


Fig. 32 FRAME COVER (P05-S310-0038)

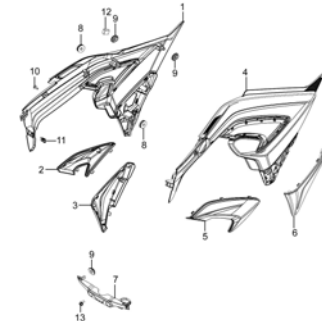


Fig. 33 FRONT FENDER (P05-S320-0023)

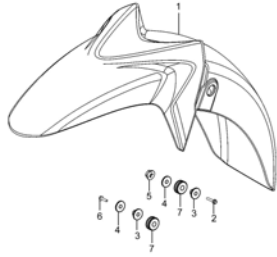


Fig. 34 HANDLEBAR (P05-S330-0042)

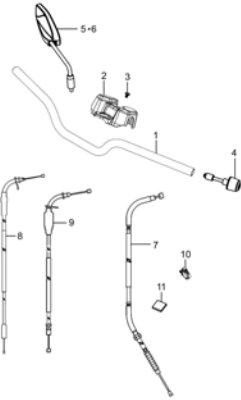


Fig. 35 HANDLE SWITCH (P05-S340-0037)

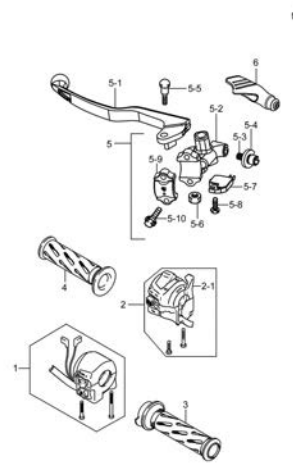


Fig. 36 REAR FENDER (P05-S350-0020)

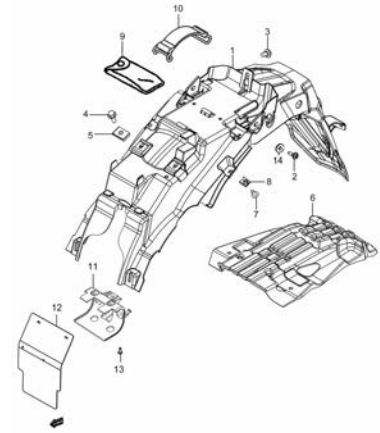


Fig. 37 COWLING (P05-S360-0019)

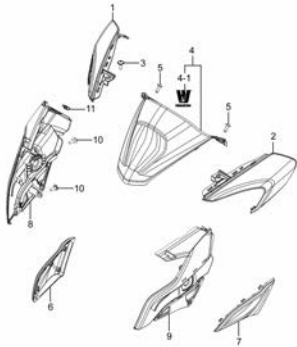


Fig. 38 LABEL (P05-S370-0044)

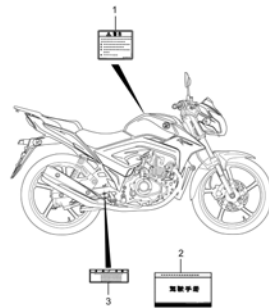


Fig. 39 SEAT (P05-S380-0020)

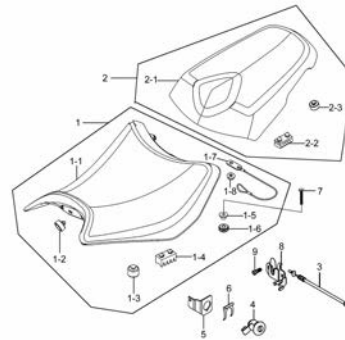


Fig. 40 COVER, SEAT TAIL (P05-S390-0032)

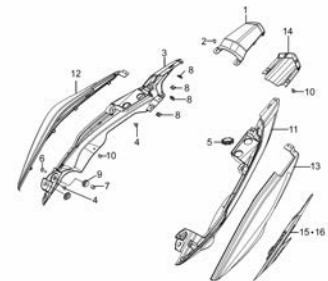


Fig. 41 STEERING STEM (P05-S400-0039)

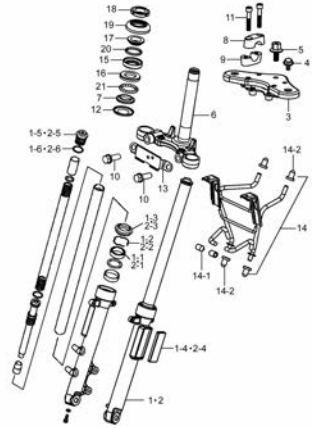


Fig. 42 FRONT WHEEL (P05-S410-0030)

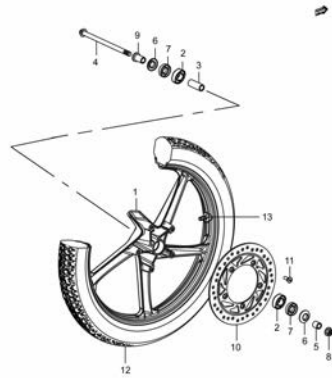


Fig. 43 FRONT CALIPER (P05-S420-0012)

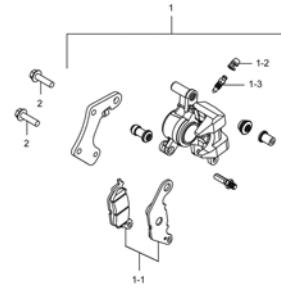


Fig. 44 FRONT BRAKE CYLINDER (P05-S430-0011)

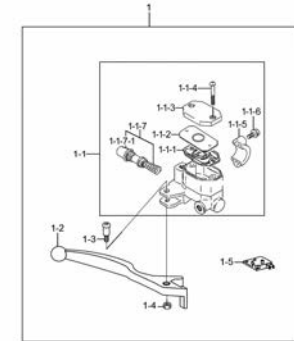


Fig. 45 HOSE, FRONT BRAKE (P05-S435-0022)

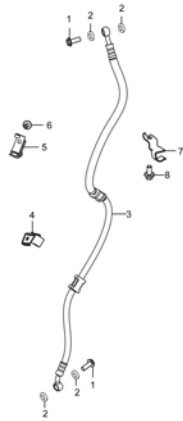


Fig. 46 REAR SWINGING ARM (P05-S440-0005)

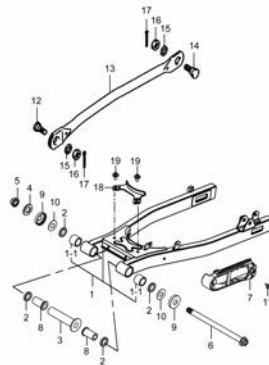


Fig. 47 REARSHOCK ABSORBER (P05-S450-0014)

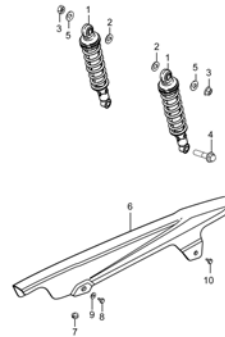


Fig. 48 REAR WHEEL (P05-S460-0031)

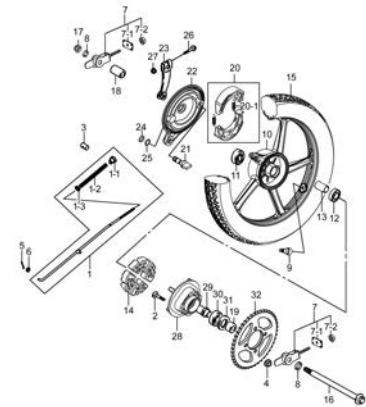
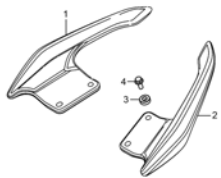


Fig. 49 CARRIER (P05-S480-0020)



1

Fig.1

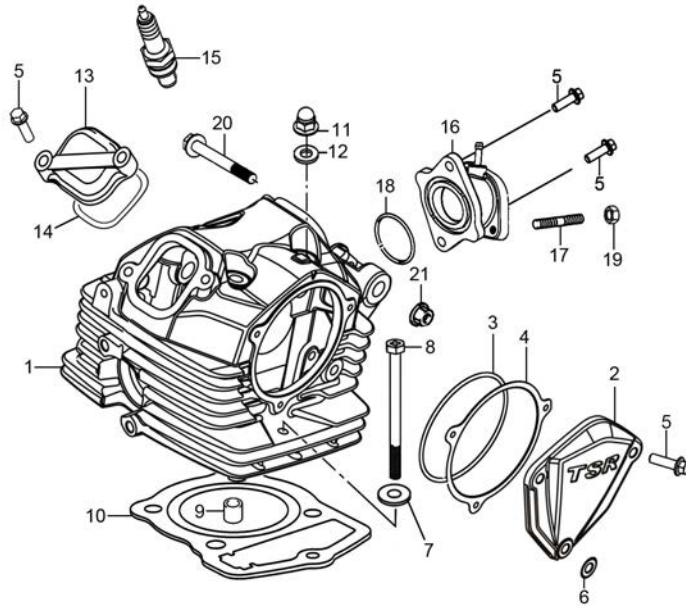


Fig.1 CYLINDER HEAD&CYLINDER HEAD COVER (P05-S010-0044)

REF. No.	PART No.	DESCRIPTION	Q'TY	REMARKS
1	11110H3E0C0H000	HEAD COMP, CYLINDER	1	
2	11121H3E000H000	COVER, CYLINDER HEAD, L	1	
3	09280H75001H000	O-RING	1	
4	11123H3F000H000	WASHER, CYL HEAD COVER, L	1	
5	01547-0620A-000	BOLT	9	
6	09168-06023-000	GASKET, CSHAFT COVER R SCREW	1	
7	11167H12000H000	WASHER, PLAIN (COPPER)	1	
8	09128H06006H000	BOLT, HEX WITH CROSS RECESS	1	
9	09206H10008H000	PIN	2	
10	11141H3F000H000	GASKET, CYLINDER HEAD	1	
11	11165H35010H000	NUT, TECTIFORM	4	
12	09160H08003H000	WASHER	4	
13	11175H3F010H000	CAP, INSPECTION	2	
14	09280H50003H000	O-RING	2	
15	09482-00399-000	SPARK PLUG (NGK, DR8EA)	1	
16	13110H3E001H000	PIPE COMP, INTAKE	1	
17	09108H06014H000	BOLT, STUD	2	
18	09280H34002H000	O-RING	1	
19	08310-0006A-000	NUT	2	
20	09103H08013H000	BOLT, HEXAGON	1	
21	08319-3108A-000	NUT	1	

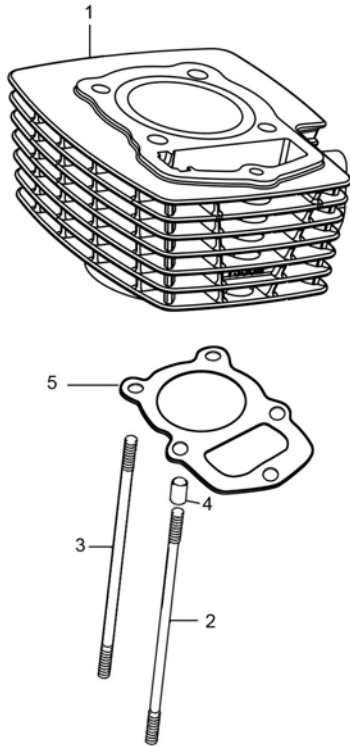
2



Fig. 2

Fig.2 CYLINDER (P05-S020-0008)

REF. No.	PART No.	DESCRIPTION	Q' TY	REMARKS
1	11210H3E040H0B0	CYLINDER COMP	1	
2	11243H35000H000	BOLT, CYL SYUD	2	
3	11244H35000H000	STUD BOLT B, CYLINDER	2	
4	09206H10007H000	PIN, KNOCK	2	
5	11241H36000H000	GASKET, CYLINDER	1	



2



Fig. 3

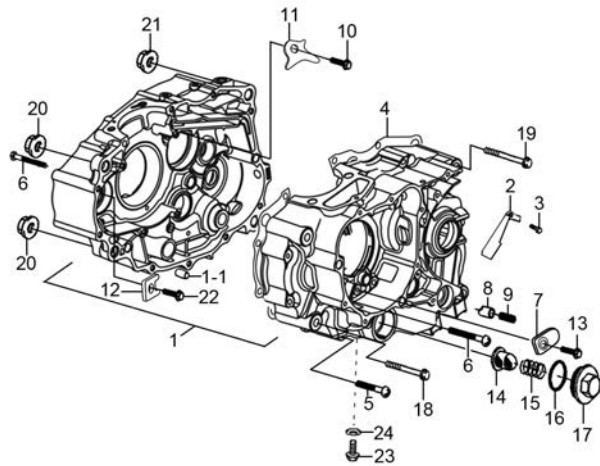


Fig.3 CRANKCASE (P05-S030-0023)

REF. No.	PART No.	DESCRIPTION	Q'TY	REMARKS
1	11300H3CY12H000	CRANKCASE COMP ASSY	1	
1-1	09206H10007H000	PIN, KNOCK	2	
2	32115H35000H000	PLATE, WIRE PRESSURE	1	
3	01547-0612A-000	HEXAGON BOLT WITH FLANGE	1	
4	11481H3C000H000	GASKET, CRANKCASE	1	
5	01547-0650A-000	BOLTS, HEXAGON HEAD FLANGE	11	
6	01547-0660A-000	BOLT	4	
7	12545H36010H000	PLATE, BRG PUSH PIN SPRING	1	
8	12543H36010H000	PIN, BRG PUSH	1	
9	09440H07002H000	SPRING, COMPRESSION	1	
10	01547-0614A-000	BOLTS, HEXAGON HEAD FLANGE	1	
11	24741H36000H000	RETAINER, CNTR SHAFT BEARING	1	
12	12659H3C000H000	RETAINER, CRANK BAL BRG	1	
13	09100-06026-000	BOLT	1	
14	16520H21D01H000	STRAINER COMP, ENG OIL	1	
15	16541H33001H000	SPRING, ENGINE OIL FILTER	1	
16	09280H35001H000	O-RING	1	
17	16542H36020H000	COVER, ENGINE OIL FILTER	1	
18	09103H08015H000	BOLT, HEXAGON	2	
19	09103H10003H000	BOLT, HEXAGON	2	
20	08319-3108A-000	NUT	2	
21	08319-3110A-000	NUT	2	
22	01547-0665A-000	BOLTS, HEXAGON HEAD FLANGE	1	
23	09247H12001H000	PLUG	1	
24	11522H33000H000	GASKET	1	

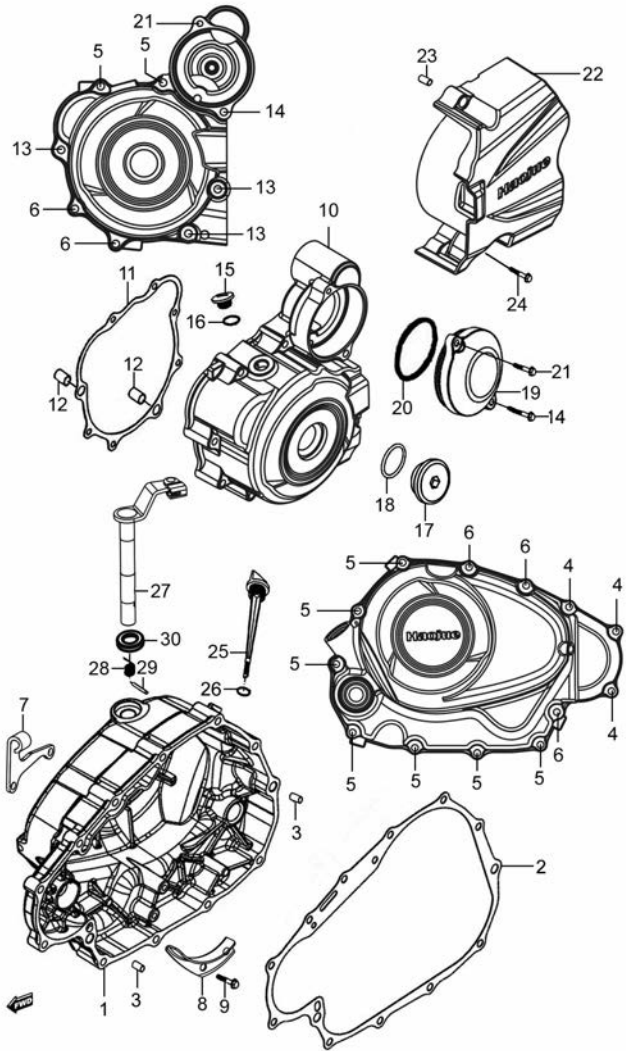
2



Fig. 4

Fig.4 CRANKCASE COVER (P05-S040-0043)

2



REF. No.	PART No.	DESCRIPTION	Q' TY	REMARKS
1	11340H2C020H000	COVER COMP, CLUTCH	1	
2	11482H3C000H000	GASKET, CLUTCH COVER	1	
3	09206H08004H000	PIN, KNOCK	2	
4	01547-0628A-000	BOLTS, HEXAGON HEAD FLANGE	3	
5	01547-0640A-000	BOLTS, HEXAGON HEAD FLANGE	9	
6	01547-0645A-000	BOLT	5	
7	11421H3C010H000	BRACKET, CLUTCH CABLE	1	
8	12511H3C000H000	PLATE, OIL GUIDE	1	
9	01547-0612A-000	HEXAGON BOLT WITH FLANGE	2	
10	11351H2C000H000	COVER, MAGNETO	1	
11	11483H36000H000	GASKET, MAGNETO COVER	1	
12	09206H10007H000	PIN, KNOCK	2	
13	01547-0650A-000	BOLTS, HEXAGON HEAD FLANGE	3	
14	01547-0670A-000	BOLTS, HEXAGON HEAD FLANGE	1	
15	09247-12104-000	PLUG, TDC	1	
16	09168-12002-000	GASKET, TDC PLUG	1	
17	09259H26002H000	PLUG	1	
18	09280-22008-000	O-RING	1	
19	11441H36040H000	COVER, GEAR CASE	1	
20	09280H63001H000	O-RING	1	
21	01547-0620A-000	BOLT	1	
22	11361H2C000H000	COVER, ENG SPROCKET	1	
23	09206H08002H000	PIN, KNOCK	2	
24	01547-0635A-000	BOLT	2	
25	11971H3E000H000	GAUGE, OIL LEVEL	1	
26	09280H18002H000	O RING	1	
27	23270H3D020H000	SHAFT COMP, CLUTCH RELEASE	1	
28	09448H15001H000	SPRING, TORSION	1	
29	09205H03001H000	PIN, SPRING	1	

Fig. 4

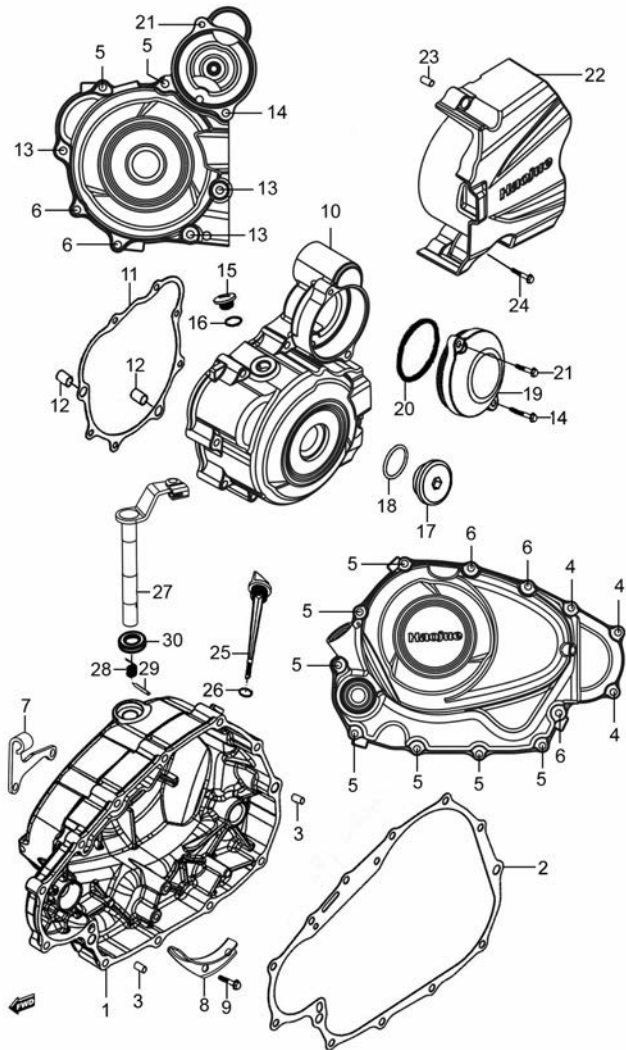


Fig.4 CRANKCASE COVER (P05-S040-0043)

REF. No.	PART No.	DESCRIPTION	Q' TY	REMARKS
30	23285H35000H000	SEAL, RELEASE POLE	1	

2

Fig. 5

2

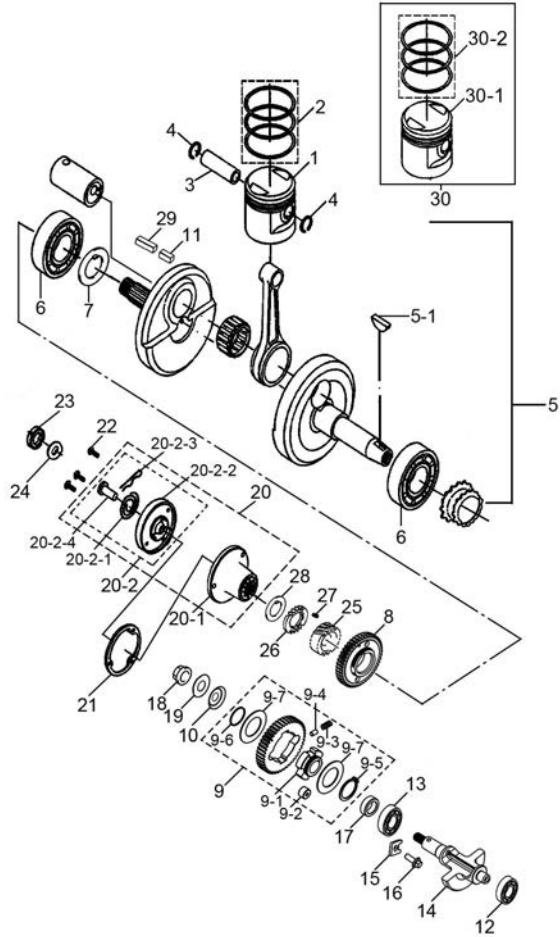


Fig.5 CRANKSHAFT (P05-S050-0039)

REF. No.	PART No.	DESCRIPTION	Q'TY	REMARKS
1	12111H3E010H0B0	PISTON	1	
2	12140H3E020H000	RING SET, PISTON	1	
3	12151H3E000H000	PIN, PISTON	1	
4	09381H14001H000	RING, SNAP	2	
5	12200H3E010H000	CRANKSHAFT ASSY	1	
5-1	09420H04002H000	KEY	1	
6	09262H35005H000	BEARING	2	
7	09181-35108-000	SHIM, CRANKSHAFT ASSY	1	
8	12661H3D000H000	GEAR, CRANK BALANCER DRIVE	1	
9	12670H3E000H000	GEAR COMP, CRANK BAL DRIVEN	1	
9-1	12679H3E000H000	RACE, CRK BAL DRIVEN GEAR	1	
9-2	12686-26H00-000	DAMPER, CRANK BALANCER GEAR	2	
9-3	09440H09001H000	SPRING, COMPRESSION	2	
9-4	09202H05004H000	PIN	2	
9-5	09380H24001H000	RING, SNAP	1	
9-6	09380H24002H000	RING, SNAP	1	
9-7	09181H25002H000	SHIM	2	
10	09164H13001H000	WASHER, WAVE	1	
11	09421H04001H000	KEY	2	
12	08110-63010-000	BALL BEARING	1	
13	08110-62030-000	BEARING, AXLE SHAFT, L	1	
14	12651H3E000H000	BALANCER, CRANK	1	
15	12659H3C000H000	RETAINER, CRANK BAL BRG	1	
16	01547-0614A-000	BOLTS, HEXAGON HEAD FLANGE	1	
17	09180H16002H000	SPACER	1	
18	08316-1012A-000	NUT	1	
19	09181H12002H000	WASHER	1	
20	16052H3D000H000	FILTER SET, ENGINE OIL	1	
20-1	16514H3D000H000	BODY, ENGINE OIL FILTER	1	

Fig. 5

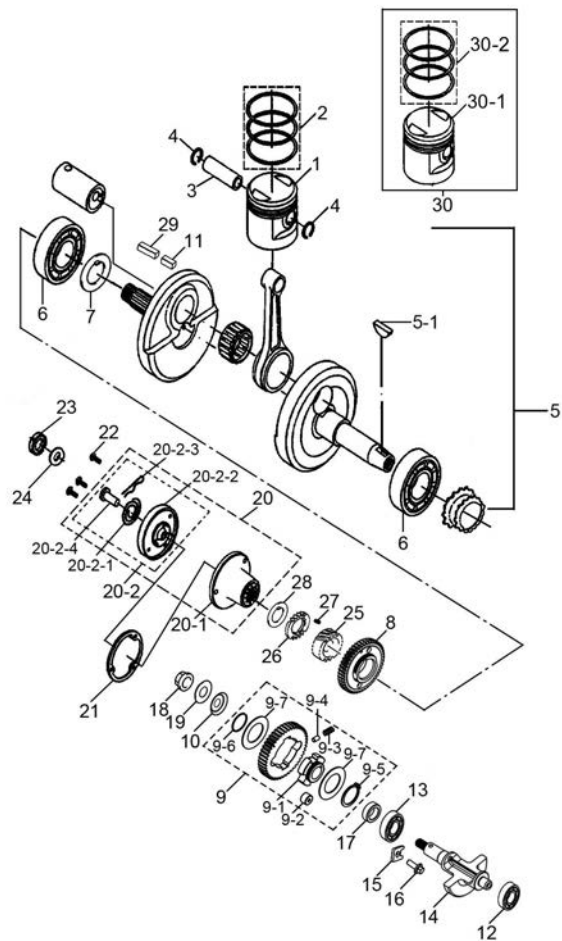


Fig.5 CRANKSHAFT (P05-S050-0039)

REF. No.	PART No.	DESCRIPTION	Q'TY	REMARKS
20-2	16520H33000H000	COVER ASSY, ENGINE OIL FILTER	1	
20-2-1	16532H33000H000	SPRING	1	
20-2-2	16521H33000H000	ROTOR COVER	1	
20-2-3	16551H33000H000	PIN	1	
20-2-4	16531H33000H000	OIL PIPE	1	
21	16561H33000H000	GASKET, ROTOR COVER	1	
22	02122-0512A-000	CROSS RECESSED HEAD SCREW	3	
23	21346H3E000H000	NUT, LOCK	1	
24	09160H16004H000	WASHER, PLAIN	1	
25	21111H3D010H000	GEAR, PRIMARY DRIVE	1	
26	21112H3D010H000	GEAR, PRIMARY DRIVE NO. 2	1	
27	21114H3E000H000	SPRING, PRIMARY DRIVE GEAR	3	
28	09166H18001H000	WASHER, NOTCHED	1	
29	09421H04003H000	KEY	1	
30	12100H3E010H050	PISTON SET (OS:0.5)	1	
30-1	12111H3E010H050	PISTON (OS:0.5)	1	
30-2	12140H3E030H050	RING SET, PISTON (OS:0.5)	1	

2



Fig. 6

2

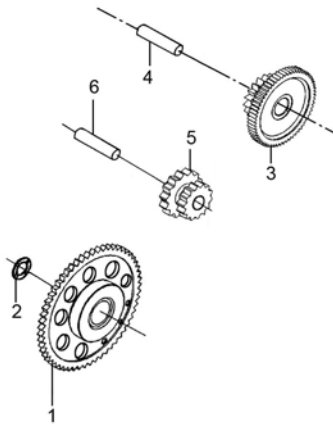


Fig.6 STARTER CLUTCH (P05-S060-0006)

REF. No.	PART No.	DESCRIPTION	Q' TY	REMARKS
1	12620H36010H000	GEAR COMP, STARTER CLUT	1	
2	12623H3E020H000	WASHER, STARTER CLUTCH GAER	1	
3	12681H36000H000	GEAR, ELECTRIC STARTER	1	
4	12683H36000H000	SHAFT, GEAR 1ST	1	
5	12651H36000H000	GEAR, STARTER IDLE	1	
6	12691H36000H000	SHAFT, GEAR 2ND	1	



Fig.7

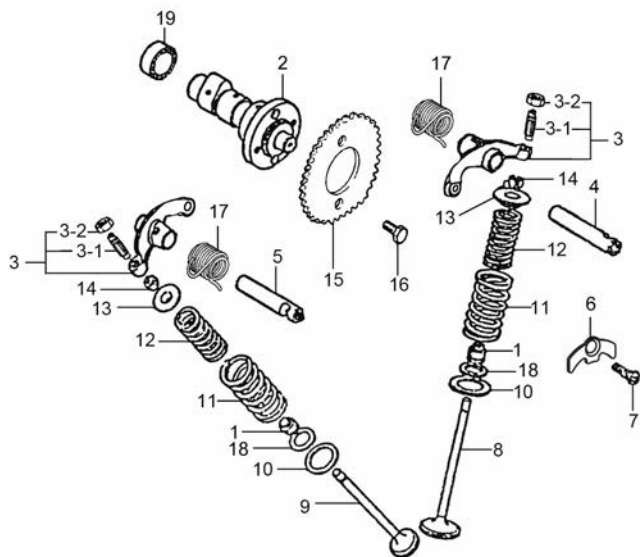


Fig.7 CAMSHAFT-VALVE (P05-S070-0007)

REF. No.	PART No.	DESCRIPTION	Q'TY	REMARKS
1	09283H10002H000	SEAL, OIL	2	
2	12710H3D021H000	CAMSHAFT COMP	1	
3	12840H3D000H000	ARM COMP, VALVE ROCKER	2	
3-1	12842H3D000H000	SCREW, TAPPET ADJUSTING	1	
3-2	12852H33000H000	NUT	1	
4	12861H3D000H000	SHAFT, VALVE ROCKER ARM INTAKE	1	
5	12871H3D000H000	SHAFT, VALVE ROCKER ARM, EXH	1	
6	12862H35022H000	RETAINER, ROCKER ARM SHAFT	1	
7	02122-0616A-000	SCREW	1	
8	12911H3E002H000	VALVE, INTAKE	1	
9	12912H3E010H000	VALVE, EXHAUST	1	
10	09181H17001H000	SHIM	2	
11	12922H3F000H000	SPRING, VALVE OUTER	2	
12	12921H3F000H000	SPRING, VALVE INNER	2	
13	12931H3E000H000	RETAINER VALVE SPRING	2	
14	12932H50100H000	COTTER VALVE	4	
15	12741H35010H000	SPROCKET, CAMSHAFT	1	
16	09100H06003H000	BOLT, HEXAGON	2	
17	09448H22001H000	SPRING, TORSION	2	
18	09181H12003H000	SHIM	2	
19	08140-60030-000	BALL BEARING	1	

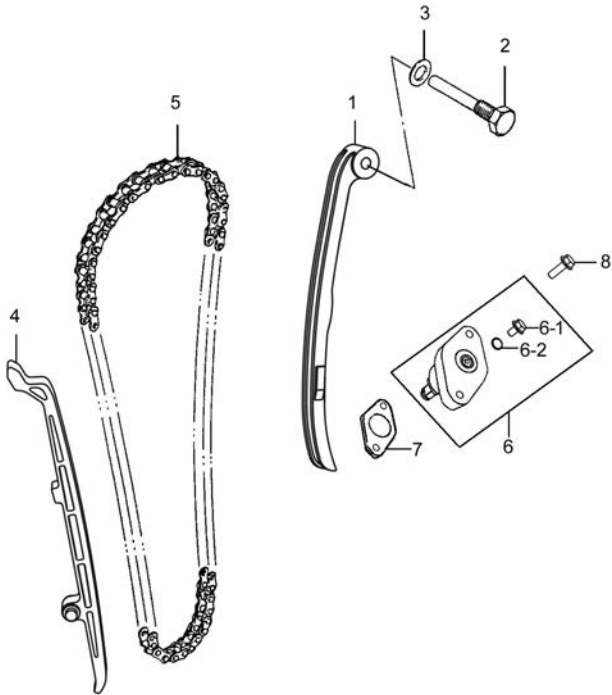
2



Fig. 8

Fig.8 CAM CHAIN (P05-S080-0012)

REF. No.	PART No.	DESCRIPTION	Q' TY	REMARKS
1	12811H3F000H000	TENSIONER, CAM CHAIN	1	
2	09135H08004H000	BOLT	1	
3	09160H08011H000	WASHER	1	
4	12771H35000H000	GUIDE, CAM CHAIN	1	
5	12760H35030H000	CHAIN COMP, CAMSHAFT DRIVE	1	
6	12830H36Y00H000	ADJUSTER SET, TENSIONER	1	
6-1	09128H06010H000	BOLT, HEX WITH CROSS RECESS	1	
6-2	11142H35000H000	O RING	1	
7	12837H35000H000	GASKET, TENSIONER ADJUSTER	1	
8	01547-0620A-000	BOLT	2	



2



Fig.9

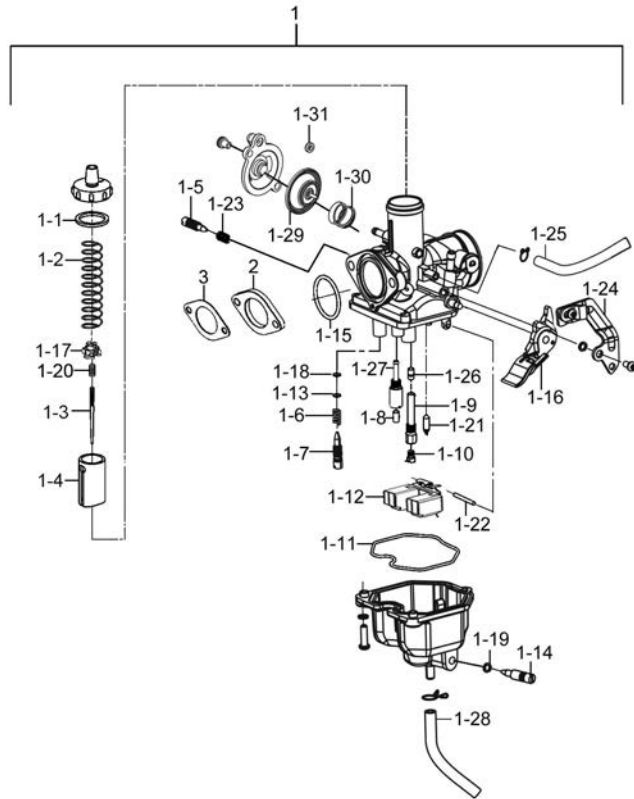


Fig.9 CARBURETOR (P05-S090-0035)

REF. No.	PART No.	DESCRIPTION	Q'TY	REMARKS
1	13200H2C030H000	CARBURETOR ASSY	1	
1-1	13255H11200H000	TOP GASKET	1	
1-2	13573H11A10H000	COMPRESSION SPRING	1	
1-3	13383H2C030H000	JET NEEDLE	1	
1-4	13251H11200H000	POSTON VALVE	1	
1-5	13267H33000H000	SPRING SCREW	1	
1-6	13268H33000H000	SPRING COMPR	1	
1-7	13279H36900H000	ADJUSTER	1	
1-8	13245H11200H000	PILOT JET	1	
1-9	13242H11240H000	NEEDLE JET HOLDER	1	
1-10	13282H21D00H000	JET, MAIN	1	
1-11	13251H11A10H000	GASKET	1	
1-12	13252H33000H000	FLOAT COMP	1	
1-13	13262H11200H000	WASHER	1	
1-14	13247H33000H000	DRAIN SCREW	1	
1-15	13253H33000H000	O RING	1	
1-16	13432H33000H000	LEVER CHOKE	1	
1-17	13257H11200H000	COLLAR	1	
1-18	13295H21D00H000	O RING	1	
1-19	13225H11200H000	O RING	1	
1-20	13258H11210H000	E RING	1	
1-21	13370H21D00H000	VALVE ASSY, NEEDLE	1	
1-22	13254H21D00H000	PIN	1	
1-23	13263H11200H000	COMPRESSION SPRING	1	
1-24	13270H12900H000	BRACKET	1	
1-25	13684H2C030H000	AIR VENT HOSE	1	
1-26	09494H12900H000	NEEDLE JET	1	
1-27	13247H11200H000	BUBBLER	1	
1-28	13683H2C030H000	HOSE, DRAIN	1	

2

Fig. 9

2

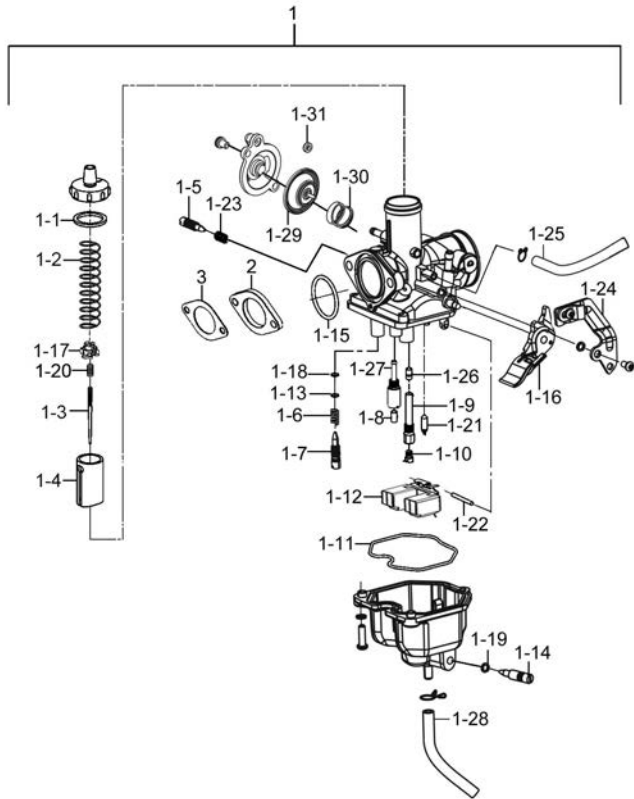


Fig.9 CARBURETOR (P05-S090-0035)

REF. No.	PART No.	DESCRIPTION	Q' TY	REMARKS
1-29	13480H2C010H000	DIAPHRAGM ASSY	1	
1-30	13285H2C010H000	ACV SPRING	1	
1-31	13258H2C010H000	O-RING	1	
2	13112H22500H000	PLATE, CARB HEAT GUARD	1	
3	13113H22502H000	GASKET, CARB HEAT GUARD PL	1	

Fig. 10

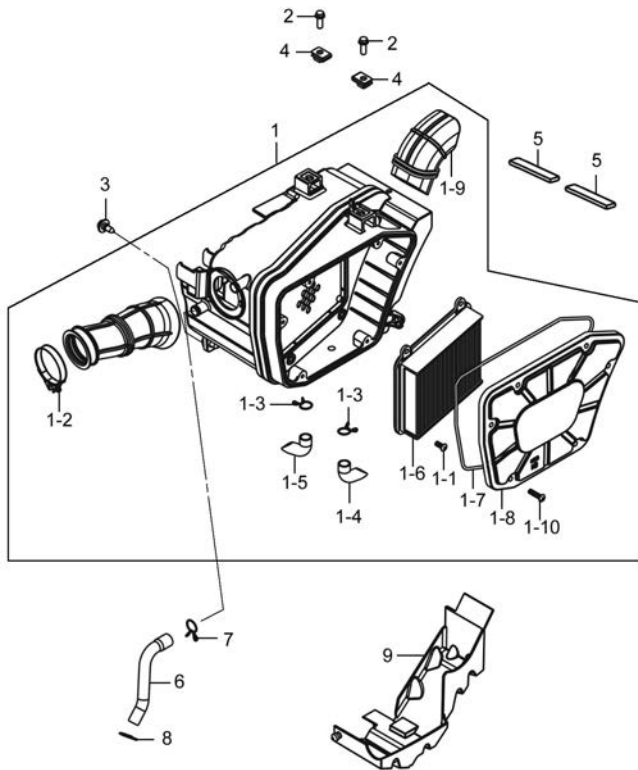


Fig.10 AIR CLEANER (P05-S100-0019)

REF. No.	PART No.	DESCRIPTION	Q'TY	REMARKS
1	13700H2C004H000	CLEANER ASSY, AIR	1	
1-1	02142-0512A-000	CROSS RECESSED HEAD SCREW	4	
1-2	13170H2C002H000	CLAMP, OUTLET TUBE	1	
1-3	09401H13201H000	CLIP	2	
1-4	13863H22500H000	TUBE, DRAIN	1	
1-5	13878H2C000H000	TUBE, DRAIN	1	
1-6	13781H2C001H000	FILTER, AIR CLNR	1	
1-7	13723H2C000H000	GASKET, AIR CLNR CAP	1	
1-8	13741H2C001H000	CAP, AIR CLNR	1	
1-9	13891H2C000H000	TUBE, AIR CLEANER INLET	1	
1-10	03541-0525A-000	CROSS RECESSED HEAD TAPPING SCREW	6	
2	01550-0616A-000	BOLT	2	
3	09111H06012H000	BOLT	1	
4	35157H22501H000	NUT	2	
5	13750H2C000H000	TAPE, DUST SEAL	2	
6	13851H2C000H000	TUBE, BREATHER	1	
7	09401H14302H000	CLIP	1	
8	09401H12302H000	CLIP	1	
9	13766H2C001H000	SEAL DUST	1	

2



Fig. 11

2

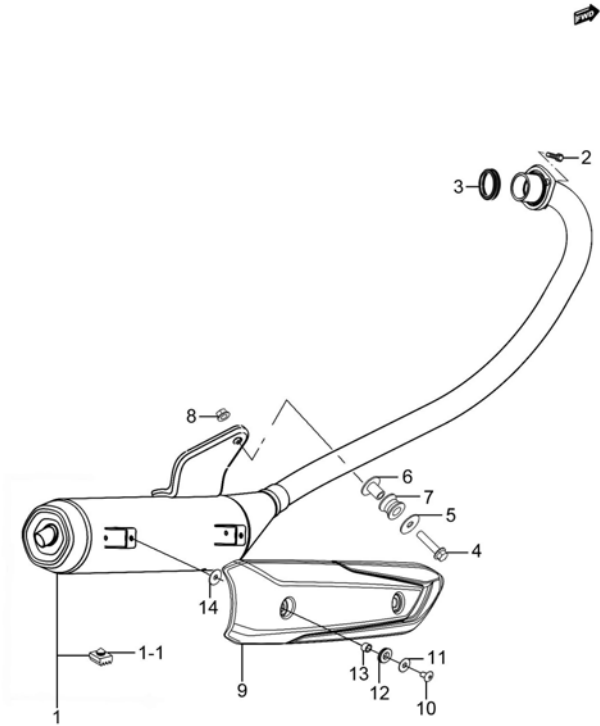


Fig.11 MUFFLER (P05-S110-0036)

REF. No.	PART No.	DESCRIPTION	Q' TY	REMARKS
1	14036H2C060H000	MUFFLER SET	1	
1-1	42278-26H00-000	STOPPER, CENTER STAND	1	
2	07130-0825A-000	BOLT	2	
3	14181H11200H000	GASKET, EXH PIPE	1	
4	01550-1045A-000	BOLT	1	
5	09160-10102-000	WASHER, PLAIN	1	
6	14413-25H00-000	SPACER	1	
7	14414H2C000H000	CUSHION	1	
8	09159H10004H000	NUT, WITH FLANGE	1	
9	14781H2C000H000	COVER, MUF	1	
10	09139H06006H000	SCREW	2	
11	09160-06164-000	WASHER, PLAIN	2	
12	09320H10023H000	CUSHION	2	
13	09180H06336H000	SPACER	2	
14	09168H06002H000	GASKET	2	

Fig. 12

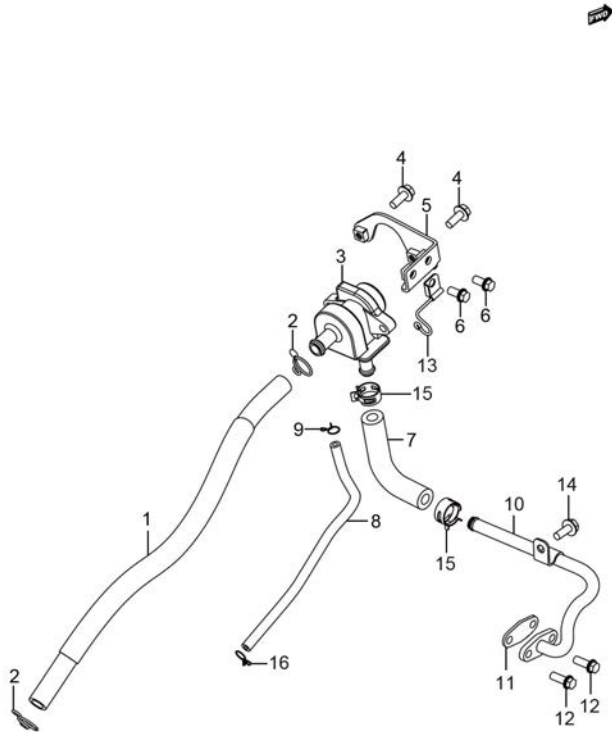


Fig.12 2ND AIR VAVLE (P05-S120-0020)

REF. No.	PART No.	DESCRIPTION	Q'TY	REMARKS
1	18712H2C001H000	HOSE, 2ND AIR CLNR	1	
2	09401H15201H000	CLAMP	2	
3	18450H12E60H000	VALVE ASSY, 2ND AIR	1	
4	01550-0620A-000	BOLTS, HEXAGON HEAD FLANGE	2	
5	18610H2E000H000	BRACKET COMP, 2ND AIR VALVE	1	
6	01550-0612A-000	BOLT	2	
7	18461H30201H000	HOSE, 2ND AIR VALVE	1	
8	18463H2E002H000	HOSE, 2ND AIR VALVE VACUUM	1	
9	09401H07201H000	CLIP	1	
10	18410H30210H000	PIPE COMP, 2ND AIR	1	
11	18441H2A200H000	GASKET, 2ND AIR PIPE	1	
12	01547-0616A-000	BOLT	2	
13	18442H21F00H000	GUIDE, 2ND AIR VALVE HOSE	1	
14	01547-0612A-000	HEXAGON BOLT WITH FLANGE	1	
15	09401-15404-000	CLIP, FUEL HOSE	2	
16	09401-06101-000	CLIP	1	

2

Fig. 13



2

Fig.13 OIL PUMP (P05-S130-0004)

REF. No.	PART No.	DESCRIPTION	Q' TY	REMARKS
1	16400H3D000H000	PUMP ASSY, ENG OIL	1	
2	02122-0630A-000	CROSS RECESSED HEAD SCREW	2	
3	09280H35000H000	O-RING	2	

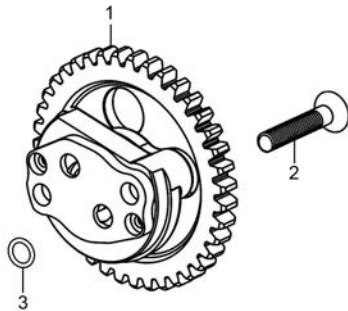


Fig. 14

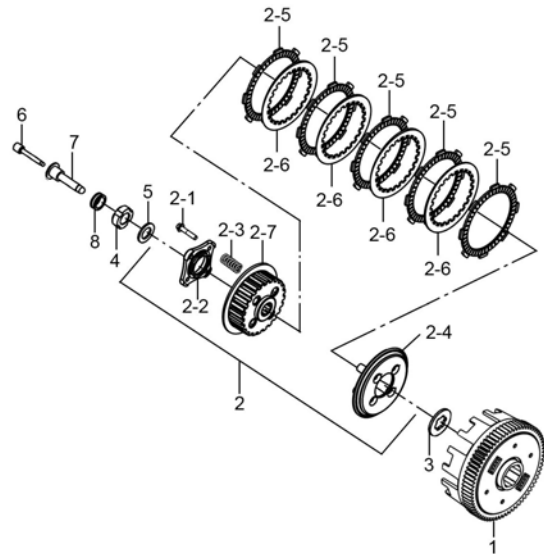


Fig.14 CLUTCH (P05-S140-0011)

REF. No.	PART No.	DESCRIPTION	Q' TY	REMARKS
1	21200H3E001H000	GEAR ASSY, PRIMARY DRIVEN	1	
2	21410H3E050H000	HUB COMP, CLUTCH SLEEVE	1	
2-1	01550-0622A-000	BOLT, HEXAGON HEAD FLANGE	4	
2-2	21471H35000H000	PLATE, CLUTCH PUSH ROD	1	
2-3	21413H3D000H000	SPRING, CLUTCH	4	
2-4	21462H3E000H000	DISC, CLUTCH PRESSURE	1	
2-5	21441H33020H000	PLATE, CLUTCH DRIVE	5	
2-6	21451H3E020H000	PLATE, CLUTCH DRIVEN	4	
2-7	21411H3E000H000	HUB, CLUTCH SLEEVE	1	
3	21481H33000H000	WASHER	1	
4	21346H33000H000	NUT, LOCK	1	
5	16581H33000H000	WASHER	1	
6	23131H3D000H000	POLE, CLUTCH PUSH	1	
7	23121H3D000H000	PIECE, CLUTCH PUSH	1	
8	09262H17001H000	BEARING, CLUTCH	1	

2



Fig. 15

2

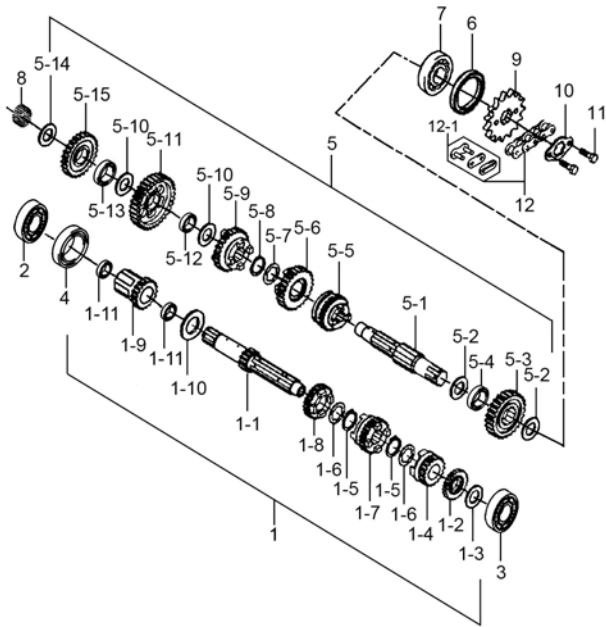
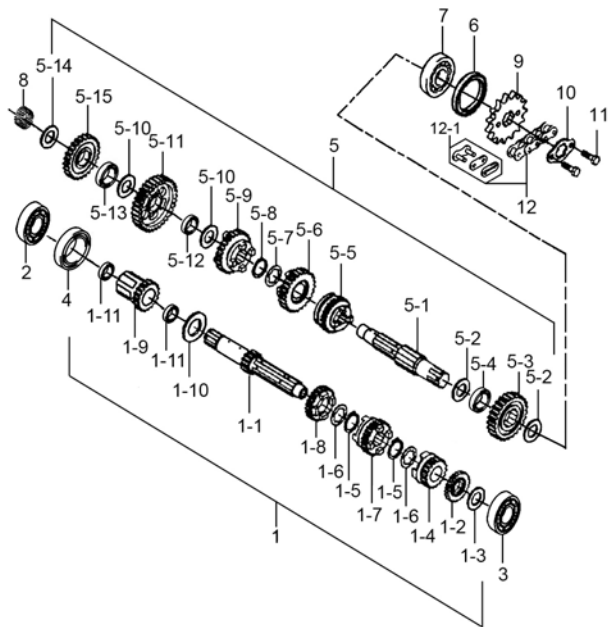


Fig.15 TRANSMISSION (P05-S150-0042)

REF. No.	PART No.	DESCRIPTION	Q' TY	REMARKS
1	24102H3E040H000	SHAFT ASSY, COUNTER	1	
1-1	24121H3D010H000	SHAFT, COUNTER	1	
1-2	24221H3E010H000	GEAR, 2ND DRIVE	1	
1-3	08211-15251-000	WASHER, 1ST DRIVEN GEAR, R THR	1	
1-4	24251H3E010H000	GEAR, 5TH DRIVE	1	
1-5	08331-31209-000	CIRCLIP	2	
1-6	24232H33000H000	WASHER	2	
1-7	24241H3E010H000	GEAR, 4TH DRIVE	1	
1-8	24231H3E000H000	GEAR, 3RD DRIVE	1	
1-9	24201H3E020H000	GEAR, DRIVE	1	
1-10	09181H20270H000	WASHER	1	
1-11	24122H3E000H000	BUSH, COUNTER SHAFT	2	
2	08110-60060-000	BEARING	1	
3	09262H15035H000	BEARING	1	
4	09180H30001H000	SPACER	1	
5	24103H3E061H000	SHAFT ASSY, DRIVE	1	
5-1	24131H3D001H000	SHAFT, DRIVE	1	
5-2	08211-20271-000	WASHER	2	
5-3	24321H3E000H000	GEAR, 2ND DRIVEN	1	
5-4	24322H3E000H000	BUSH, 2ND DRIVEN GEAR	1	
5-5	24351H3E010H000	GEAR, 5TH DRIVEN	1	
5-6	24341H3E000H000	GEAR, 4TH DRIVEN	1	
5-7	24232H33000H000	WASHER	1	
5-8	08331-31209-000	CIRCLIP	1	
5-9	24331H3E010H000	GEAR, 3RD DRIVEN	1	
5-10	09181H17240H000	WASHER	2	
5-11	24311H3E000H000	GEAR, 1ST DRIVEN	1	
5-12	24314H35000H000	BUSH, 1ST DRIVEN GEAR	1	
5-13	26263H35000H000	BUSH, KICK STARTER IDLE GEAR	1	

Fig. 15

Fig.15 TRANSMISSION (P05-S150-0042)



REF. No.	PART No.	DESCRIPTION	Q'TY	REMARKS
5-14	08211-15301-000	WASHER	1	
5-15	26261H3E000H000	GEAR, KICK STARTER IDLE	1	
6	09283H20007H000	SEAL, OIL	1	
7	09262H20017H000	BEARING	1	
8	09263H15002H000	BEARING, NEEDLE	1	
9	27511H36010H000	SPROCKET, ENGINE	1	
10	27521H33010H000	WASHER	1	
11	07130-0610A-000	HEXAGON SOCKET HEAD CAP SCREW	2	
12	27600H3D000H118	CHAIN ASSY, DRIVE	1	
12-1	27620H3D000H000	JOINT SET, CHAIN	1	

2



Fig. 16

2

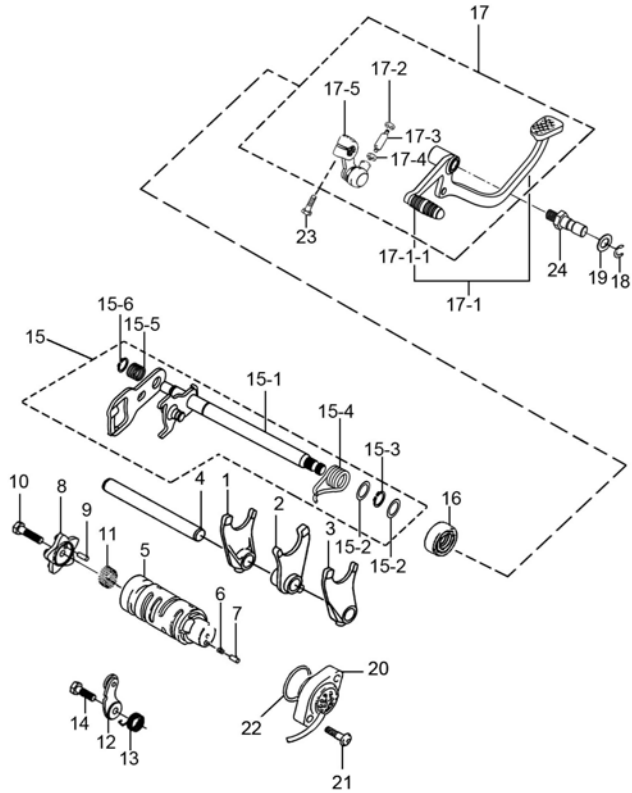


Fig.16 GEAR SHIFTING (P05-S160-0018)

REF. No.	PART No.	DESCRIPTION	Q' TY	REMARKS
1	25211H3E010H000	FORK, GEAR SHIFT, R	1	
2	25231H3E010H000	FORK, GEAR SHIFT, MIDDLE	1	
3	25241H3E010H000	FORK, GEAR SHIFT, L	1	
4	25411H3E000H000	SHAFT, GEAR SHIFT FORK	1	
5	25311H3E010H000	CAM, GEAR SHIFT	1	
6	09440H04030H000	SPRING, COMPRESSION	1	
7	25314H3E000H000	PIN, CAM SHIFT	1	
8	25381H3E020H000	PLATE, SHIFT CAM STOPPER	1	
9	04221-04109-000	PIN	1	
10	09128H06001H000	BOLT, HEX WITH CROSS RECESS	1	
11	09263H23000H000	BEARING, NEEDLE	1	
12	25350H3E010H000	STOPPER COMP, GEAR SHIFT CAM	1	
13	25351H3E010H000	SPRING, GEAR SHIFT CAM STOPPER	1	
14	09100H06022H000	BOLT, HEXAGON	1	
15	25500H3E030H000	SHAFT ASSY, GEAR SHIFT	1	
15-1	25510H3E030H000	SHAFT COMP, GEAR SHIFT	1	
15-2	09181H16200H000	WASHER	2	
15-3	08331-31149-000	CIRCLIP, KICK SHAFT	1	
15-4	25518H3E000H000	SPRING, SHIFT SHAFT RETURN	1	
15-5	09440H15002H000	SPRING, COMPRESSION	1	
15-6	08331-31129-000	CIRCLIP	1	
16	09283H14001H000	OIL SEAL	1	
17	25600H2C000H000	LEVER ASSY, GEAR SHIFT	1	
17-1	25610H2C000H000	LEVER COMP, GEAR SHIFT	1	
17-1-1	25652H16500H000	RUBBER, GEAR SHIFT PEDAL	1	
17-2	09140-06011-000	NUT, GEAR SHIFT LINK ROD, L	1	
17-3	25525H2C000H000	ROD, GEAR SHIFT LINK	1	
17-4	08310-00067-000	NUT, GEAR SHIFT LINK ROD, R	1	
17-5	25520H05520H000	ARM COMP, GEAR SHIFT LINK	1	

Fig. 16

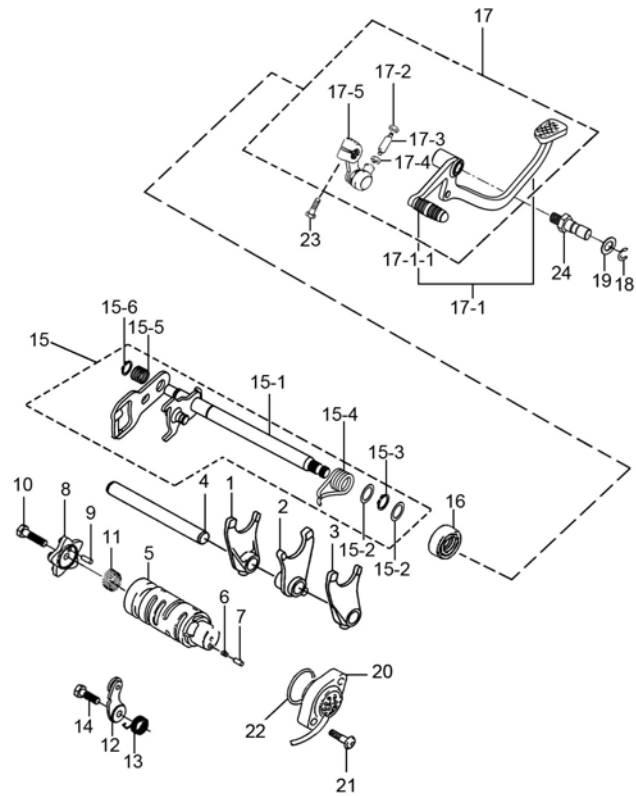


Fig.16 GEAR SHIFTING (P05-S160-0018)

REF. No.	PART No.	DESCRIPTION	Q'TY	REMARKS
18	08331-3112A-000	CIRCLIP	1	
19	09160H12012H000	WASHER, PLAIN	1	
20	37720H3E001H000	BASE ASSY, GEAR SHIFT TERM	1	
21	02112-0418A-000	CROSS RECESSED HEAD SCREW	2	
22	09280H19001H000	O-RING	1	
23	01500-0620A-000	BOLT	1	
24	25617H2A201H000	SHAFT, GEAR SHIFT LEVER	1	

2



Fig. 17

2

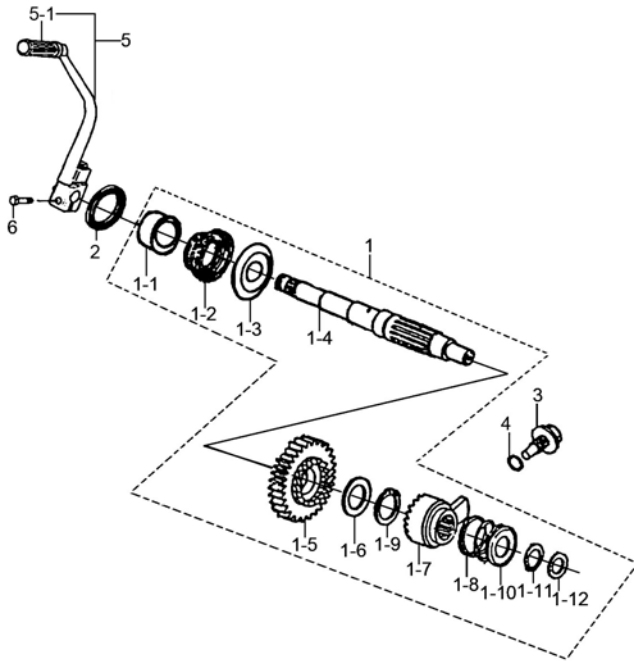


Fig.17 KICK STARTER (P05-S165-0006)

REF. No.	PART No.	DESCRIPTION	Q' TY	REMARKS
1	26210H3E000H000	SHAFT COMP, KICK STARTER	1	
1-1	26221H35000H000	GUIDE, KICK STARTER SHAFT SPRIN	1	
1-2	09448H48003H000	SPRING, TORSION	1	
1-3	26222H35000H000	HOLDER, KICK STARTER SHAFT SPRI	1	
1-4	26211H3E000H000	SHAFT, KICK STARTER	1	
1-5	26241H35000H000	GEAR, KICK STARTER DRIVE	1	
1-6	09181H20001H000	SHIM	1	
1-7	26251H35000H000	RATCHET WHEEL	1	
1-8	26226H36000H000	SPRING, RELEASE	1	
1-9	09380H19001H000	RING, SNAP	1	
1-10	26225H35000H000	SEAT, RELEASE SPRING	1	
1-11	09380H15001H000	RING, SNAP	1	
1-12	09181H12004H000	SHIM	1	
2	09283H16001H000	SEAL, OIL	1	
3	09135H12001H000	BOLT	1	
4	09280H11001H000	O-RING	1	
5	26300H2C000H000	LEVER ASSY, KICK STARTER	1	
5-1	26352-01000-000	RUBBER, KICK STARTER LEVER	1	
6	01500-0825A-000	BOLTS, HEXAGON HEAD	1	

Fig. 18

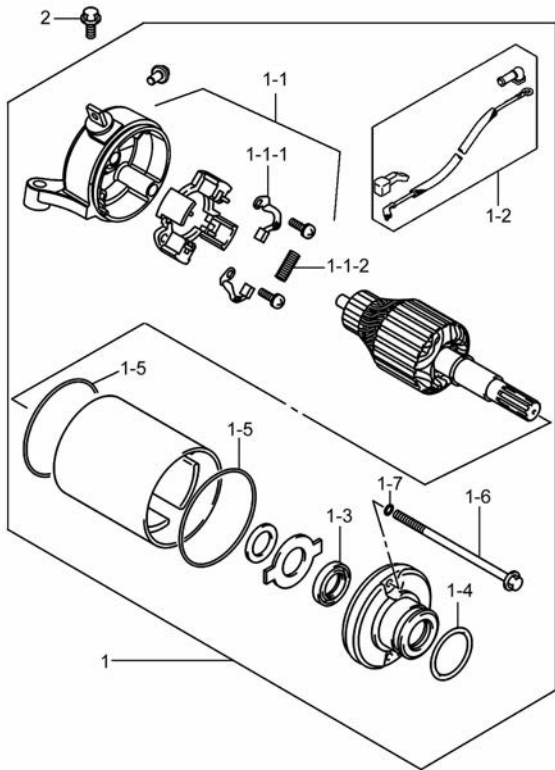


Fig.18 STARTING MOTOR (P05-S170-0013)

REF. No.	PART No.	DESCRIPTION	Q' TY	REMARKS
1	31100H3F030H000	MOTOR ASSY, STARTING	1	
1-1	31175H3F010H000	FRAME ASSY	1	
1-1-1	31133H22500H000	BRUSH, STARTER MOTOR, MINUS	1	
1-1-2	31135H22500H000	SPRING, STARTER MOTOR BRUSH	4	
1-2	33810H3F030H000	WIRE, STARTER MOTOR	1	
1-3	31153H22500H000	OIL SEAL, STARTER MOTOR	1	
1-4	31156H22500H000	O-RING	1	
1-5	31156H22510H000	O-RING	2	
1-6	31281H22500H000	BOLT	2	
1-7	31156H22520H000	O-RING	2	
2	01547-0630A-000	BOLT	2	

3



Fig. 19

Fig.19 MAGNETO (P05-S180-0012)

REF. No.	PART No.	DESCRIPTION	Q' TY	REMARKS
1	32100H2C010H000	MAGNETO ASSY	1	
1-1	32101H2C000H000	STATOR ASSY	1	
1-2	32102H2C010H000	ROTOR ASSY	1	
2	09100H05004H000	BOLT, HEXAGON	2	
3	01547-0625A-000	BOLT	3	
4	32113H35000H000	WASHER	1	
5	32111H33000H000	BOLT	1	

3

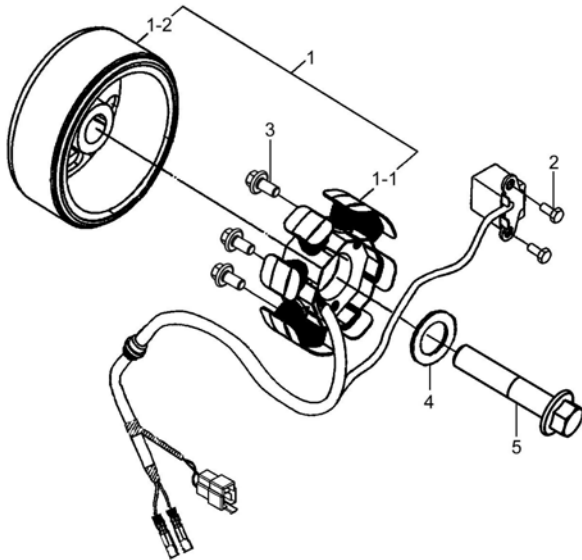


Fig. 20

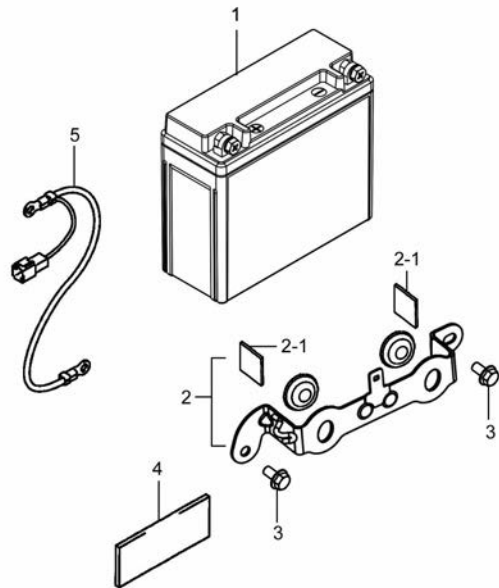


Fig.20 BATTERY (P05-S190-0021)

REF. No.	PART No.	DESCRIPTION	Q' TY	REMARKS
1	33620H2C011H000	FILLED BATTERY ASSY	1	
2	41051H2C001H000	HOLDER SET, BATTERY	1	
2-1	33652H22511H000	PROTECTOR, BATTERY	2	20*15*3
3	01550-0610A-000	BOLTS, HEXAGON HEAD FLANGE	2	
4	33652H22500H000	PROTECTOR, BATTERY	2	75*30*3
5	33860H2C000H000	WIRE, BATTERY MINUS LEAD	1	

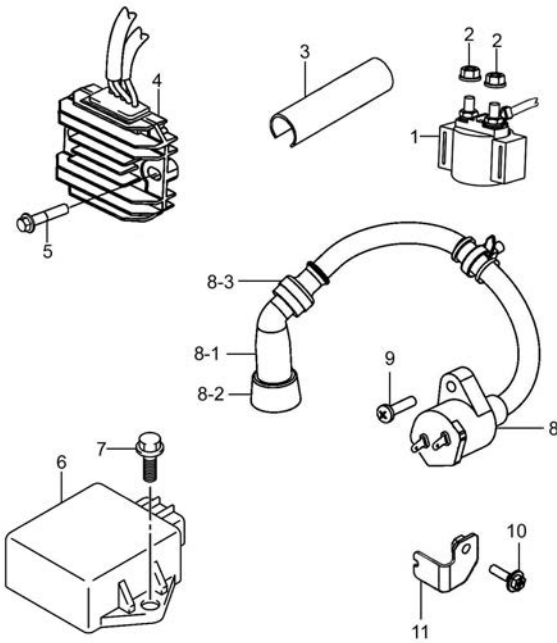
3



Fig. 21

Fig.21 ELECTRICAL (P05-S200-0030)

REF. No.	PART No.	DESCRIPTION	Q' TY	REMARKS
1	31800H73101H000	RELAY ASSY, STARTING MOTOR	1	
2	08361-3506A-000	NUT	2	
3	33652H2C010H000	PROTECTOR, BATTERY	2	
4	32800H05523H000	RECTIFIER ASSY	1	
5	01547-0614A-000	BOLTS, HEXAGON HEAD FLANGE	2	
6	32900H2C010H000	CDI UNIT	1	
7	01550-0616A-000	BOLT	2	
8	33410H05570H000	COIL ASSY, IGNITION	1	
8-1	33510-04H10-000	CAP, SPARK PLUG	1	
8-2	33541H05500H000	SEAL, SPARK PLUG	1	
8-3	33542H05500H000	SEAL, HIGH TENSION CORD	1	
9	02112-1520A-000	CROSS RECESSED HEAD SCREW	1	
10	09136H06003H000	SCREW WITH WASHER	1	
11	41894H21320HN00	BRACKET COMP, IGNITION COIL	1	



3

Fig. 22

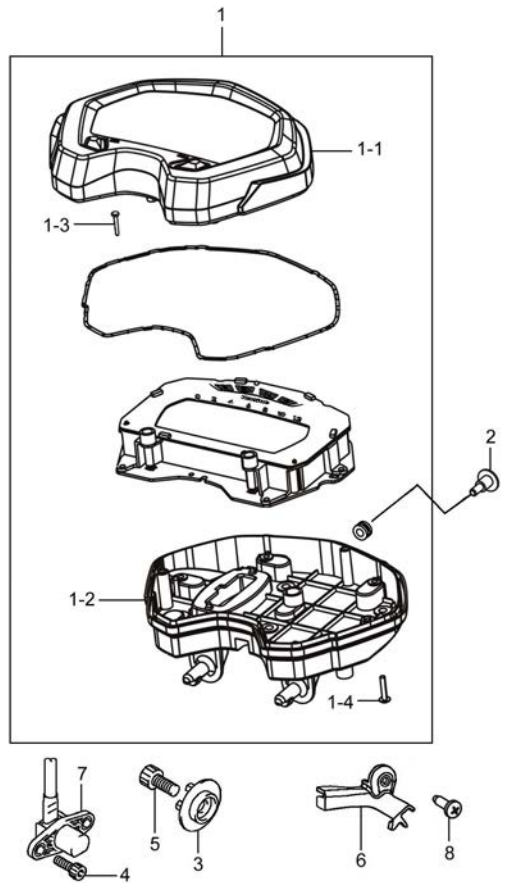


Fig.22 SPEEDOMETER (P05-S210-0033)

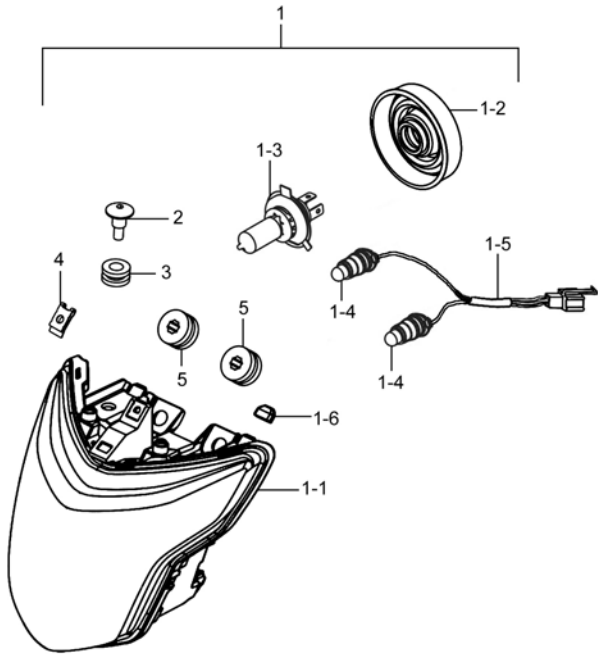
REF. No.	PART No.	DESCRIPTION	Q'TY	REMARKS
1	34100H2C003H000	SPEEDOMETER ASSY	1	
1-1	34150H2C000H000	HOOD, SPEEDOMETER	1	
1-2	34111H2C003H000	CASE, SPEEDOMETER, LOWER	1	
1-3	34124H2C000H000	KNOB, SPEEDOMETER	2	
1-4	03541-0416A-000	CROSS RECESSED HEAD TAPPING SCREW	8	
2	34149-18G00-000	SCREW, SPEEDOMETER	1	
3	34981-26H00-000	ROTOR, SPEED	1	
4	07130-0512A-000	HEXAGON SOCKET HEAD CAP SCREW	2	
5	07130-0825A-000	BOLT	1	
6	34997H22500H000	CLAMP, SPEED SENSOR	1	
7	34990H2A410H000	SENSOR COMP, SPEED	1	
8	03541-0516A-000	CROSS RECESSED HEAD TAPPING SCREW	1	

3

Fig. 23

Fig.23 HEADLAMP (P05-S220-0029)

REF. No.	PART No.	DESCRIPTION	Q' TY	REMARKS
1	35100H2C002H000	HEADLAMP ASSY	1	
1-1	35121H2C001H000	UNIT, HEADLAMP	1	
1-2	35174H2A110H000	BOOT, HEADLAMP HOUSING	1	
1-3	09471H12001H000	BULB (12V, 35/35W)	1	HS1 12V 35/35W
1-4	09471-12081-000	BULB, POSITION LAMP	2	12V 5W
1-5	35171H2C001H000	CORD, HEADLAMP	1	
1-6	35764H2C000H000	CUSHION, REAR COMB, INNER	2	
2	09111H06010H000	BOLT	2	
3	09320-09016-000	CUSHION, CYL COWLING	2	
4	35155-48H00-000	STATOR, HEADLAMP	1	
5	35382-48H00-000	CUSHION, HEADLAMP	2	



3



Fig. 24

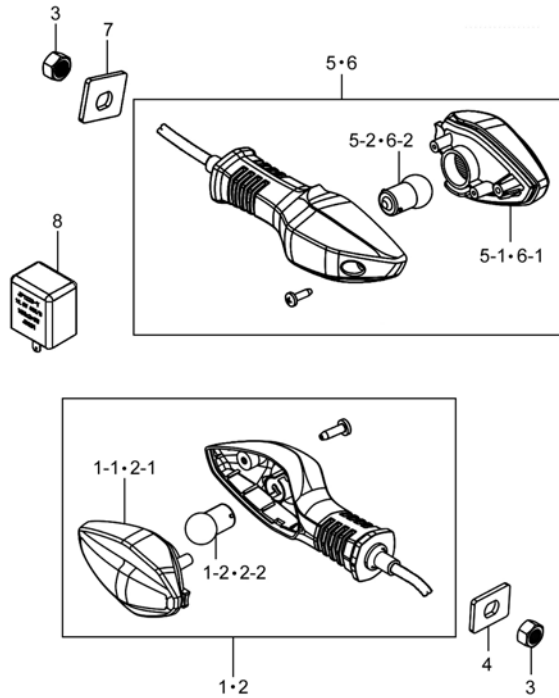


Fig.24 TURN SIGNAL LAMP (P05-S230-0025)

REF. No.	PART No.	DESCRIPTION	Q'TY	REMARKS
1	35601H2C000H000	LAMP ASSY, FRONT TURNSIGNAL, R	1	
1-1	35610H2C000H000	UNIT, FRONT TURNSIGNAL, R	1	
1-2	09471H12019H000	BULB (12V, 10W)	1	12V RY10W
2	35602H2C000H000	LAMP ASSY, FRONT TURNSIGNAL, L	1	
2-1	35630H2C000H000	UNIT, FRONT TURNSIGNAL, L	1	
2-2	09471H12019H000	BULB (12V, 10W)	1	12V RY10W
3	08310-0010A-000	HEXAGON NUT	4	
4	35616H11A01H000	PLATE, TURNSIGNAL	2	
5	35603H2C000H000	LAMP ASSY, REAR TURNSIGNAL, R	1	
5-1	35630H2C000H000	UNIT, FRONT TURNSIGNAL, L	1	
5-2	09471H12019H000	BULB (12V, 10W)	1	12V RY10W
6	35604H2C000H000	LAMP ASSY, REAR TURNSIGNAL, L	1	
6-1	35610H2C000H000	UNIT, FRONT TURNSIGNAL, R	1	
6-2	09471H12019H000	BULB (12V, 10W)	1	12V RY10W
7	35616H2C000H000	PLATE, TURNSIGNAL	2	
8	38610-04H02-000	RELAY ASSY, TURNSIGNAL	1	

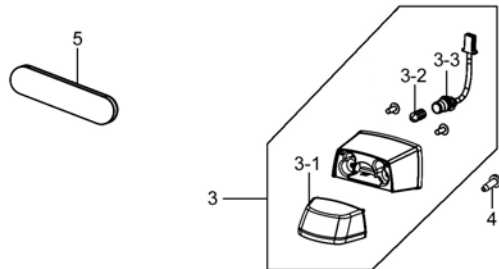
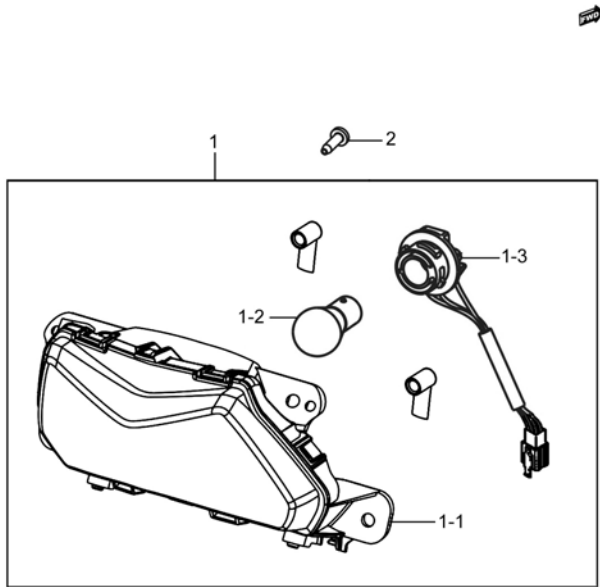
3



Fig. 25

Fig.25 REAR COMBINATION LAMP (P05-S240-0023)

REF. No.	PART No.	DESCRIPTION	Q'TY	REMARKS
1	35710H2C000H000	LAMP ASSY, REAR COMB	1	
1-1	35720H2C000H000	UNIT, REAR COMB	1	
1-2	09471-12128-000	BULB (12V, 21/5W)	1	12V P21/5W
1-3	35718H2C000H000	CORD COMP, REAR COMB	1	
2	03241-0512A-000	CROSS RECESSED HEAD TAPPING SCREW	4	
3	35910H2C003H000	LAMP ASSY, LICENSE	1	
3-1	35915H7E002H000	HOUSING, LICENSE LAMP	1	
3-2	09471-12081-000	BULB, POSITION LAMP	1	12V 5W
3-3	35918H2C000H000	CORD, LICENSE LAMP	1	
4	35151-21J00-000	SCREW, HEADLAMP	2	
5	35970H2C001H000	REFLEX REFLECTOR ASSY, REAR	1	



3

Fig. 26

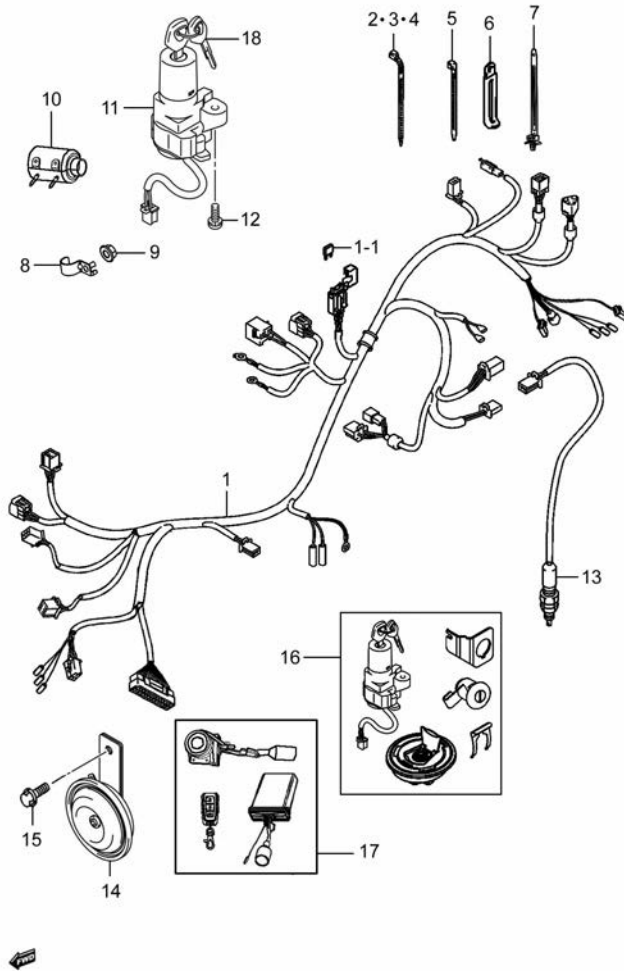


Fig.26 WIRING HARNESS (P05-S250-0038)

REF. No.	PART No.	DESCRIPTION	Q'TY	REMARKS
1	36610H2C003H000	HARNESS WIRING	1	
1-1	36720H2C100H000	FUSE ASSY	2	15A
2	09407-14403-000	CLAMP, FUEL HOSE	8	L=125
3	09407-18402-000	CLAMP, FUEL FILTER NO. 2	3	L=165
4	09407-11401-000	CLAMP, WIRING HARNESS	2	L=95
5	09407H15401H000	CLAMP, WIRING HARNESS	2	L=150
6	09404-06038-000	CLAMP	1	
7	36990H2J000H000	CLAMP, SEAT LOCK CABLE	1	
8	36651H2A100H000	CLAMP, WIRING HARNESS	1	
9	08316-1006A-000	NUT	1	
10	36618H2A000H000	BOOT, WIRING HARNESS	1	
11	37100H2A002H000	LOCK ASSY, STEERING	1	
12	09139-06048-000	BOLT, STEERING LOCK	2	
13	37740H2G100H000	SWITCH ASSY, STOP LAMP	1	
14	38500H2C000H000	HORN ASSY	1	
15	01550-0612A-000	BOLT	1	
16	37011H2A000H000	LOCK SET	1	
17	38840H2A013H000	ALARM ASSY	1	
18	37146H30120H000	KEY, BLANK	1	

3

Fig. 27

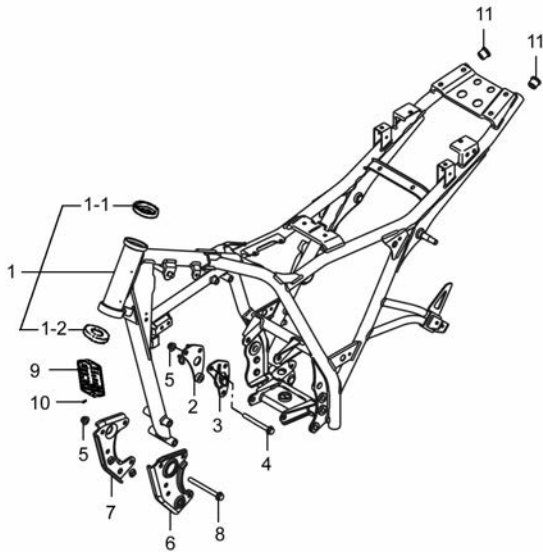


Fig.27 FRAME (P05-S260-0052)

REF. No.	PART No.	DESCRIPTION	Q' TY	REMARKS
1	41100H2CY61H000	FRAME SET	1	
1-1	51611H2A201H000	RACE, STEERING INNER UPPER	1	
1-2	51612H2A200H000	RACE, STEERING INNER LOWER	1	
2	41970H2C000H000	PLATE COMP, ENG MTG UPPER, R	1	
3	41980H2C000H000	PLATE COMP, ENG MTG UPPER, L	1	
4	09103H08013H000	BOLT, HEXAGON	2	
5	08319-3108A-000	NUT	4	
6	41940H2C010H000	PLATE COMP, ENG MTG LOWER, L	1	
7	41950H2C010H000	PLATE COMP, ENG MTG LOWER, R	1	
8	09103H08015H000	BOLT, HEXAGON	2	
9	68311H56110H000	PLATE, LICENSE	1	
10	09229H03003H000	RIVET, BLIND	2	
11	09250H18001H000	PLUG	2	

4



Fig. 28

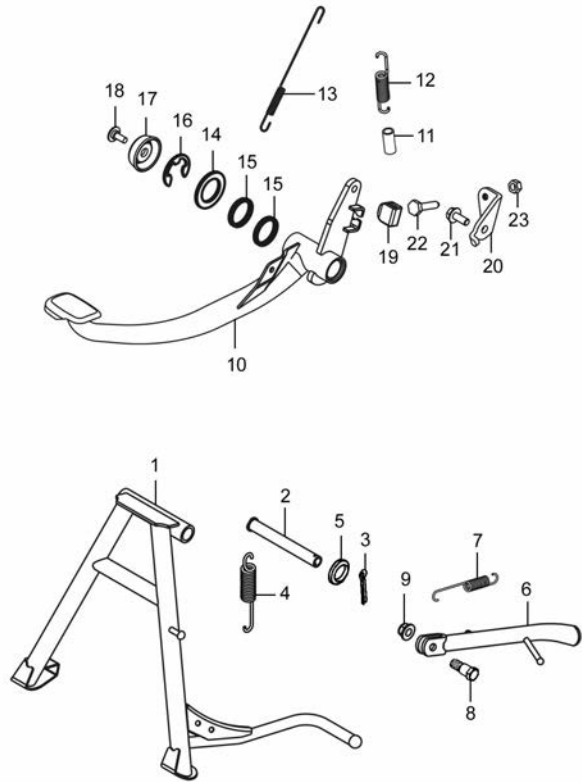


Fig.28 STAND (P05-S270-0021)

REF. No.	PART No.	DESCRIPTION	Q'TY	REMARKS
1	42100H2C000H000	STAND COMP, CENTER	1	
2	42211H2A200H000	SHAFT, CENTER STAND	1	
3	04111-2525A-000	COTTER PIN	1	
4	09443-19020-000	SPRING, TENSION	1	
5	09160-16043-000	WASHER, BRAKE PEDAL	1	
6	42310-45F20-000	STAND COMP, PROP	1	
7	42241-26H10-000	SPRING, CENTER STAND	1	
8	42341-36H00-000	BOLT, PROP STAND	1	
9	08319-3110A-000	NUT	1	
10	43110H2C001H000	PEDAL COMP, BRAKE	1	
11	43142H21302H000	HOSE, RUBBER	1	
12	09443H14004H000	SPRING, TENSION	1	
13	43115H36600H000	SPRING, STOP LAMP	1	
14	09160H17001H000	WASHER, PLAIN	1	
15	43116H22500H000	SEAL, BRAKE PEDAL	2	
16	08332-1112A-000	E-RING	1	
17	43152H22500H000	COVER, BRAKE PEDAL SHAFT	1	
18	09139H06001H000	SCREW	1	
19	43125H2A203H000	CUSHION, BRAKE PEDAL	1	
20	41855H2C000H000	PLATE, BRAKE PEDAL STOPPER	1	
21	01550-0616A-000	BOLT	1	
22	43159-45F00-000	BOLT, BRAKE PEDAL ADJUSTER	1	
23	08310-0006A-000	NUT	1	

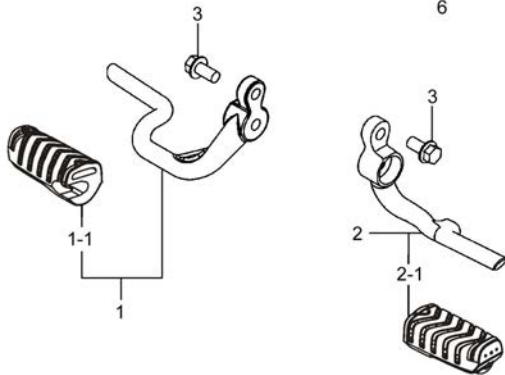
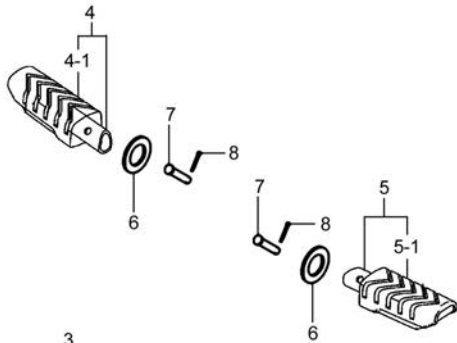
4



Fig. 29

Fig.29 FOOTREST (P05-S280-0029)

REF. No.	PART No.	DESCRIPTION	Q' TY	REMARKS
1	43501H2C000H000	FOOTREST ASSY, FRONT, R	1	
1-1	43551H2A200H000	RUBBER, FRONT FOOTREST	1	
2	43502H2C000H000	FOOTREST ASSY, FRONT, L	1	
2-1	43551H2A200H000	RUBBER, FRONT FOOTREST	1	
3	01550-1020A-000	BOLT, HEXAGON HEAD FLANGE	4	
4	43600H2C000H000	FOOTREST ASSY, PILLION, R	1	
4-1	43612H2A200H000	RUBBER, PILLION FOOTREST	1	
5	43700H2C000H000	FOOTREST ASSY, PILLION, L	1	
5-1	43612H2A200H000	RUBBER, PILLION FOOTREST	1	
6	43631H52100H000	WASHER, FOOTREST RUBBER	2	
7	09200H06004H000	PIN WITH HOLE	2	
8	04111-2015A-000	COTTER PIN	2	



4

Fig. 30

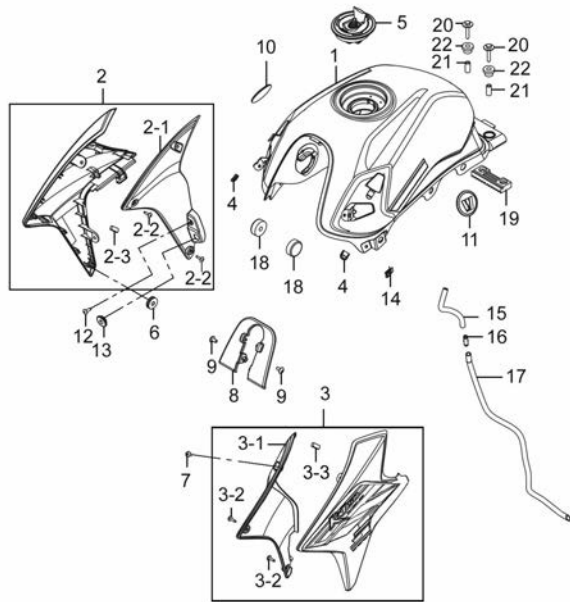


Fig.30 FUEL TANK (P05-S290-0039)

REF. No.	PART No.	DESCRIPTION	Q' TY	REMARKS
1	44011H2C030HF02	FUEL TANK SET (RED)	1	
1	44011H2C030HF04	FUEL TANK SET (GREEN)	1	
1	44011H2C030HF07	FUEL TANK SET (BLUE)	1	
1	44011H2C030HF08	FUEL TANK SET (PEARL WHITE)	1	
1	44011H2C030HF09	FUEL TANK SET (PEARL BLACK)	1	
2	44017H2C090HF02	COVER SET, FUEL TANK, R (RED)	1	
2	44017H2C090HF04	COVER SET, FUEL TANK, R (GREEN)	1	
2	44017H2C090HF07	COVER SET, FUEL TANK, R (BLUE)	1	
2	44017H2C090HF08	COVER SET, FUEL TANK, R (PEARL WHITE)	1	
2	44017H2C090HF09	COVER SET, FUEL TANK, R (PEARL BLACK)	1	
2-1	44271H2C002H000	COVER, FUEL TANK FRONT, R	1	
2-2	92125-33GC0-000	SCREW, L ID INNER COVER	2	
2-3	44256H22500H000	SEPARATOR	4	
3	44018H2C050HF02	COVER SET, FUEL TANK, L (RED)	1	
3	44018H2C050HF04	COVER SET, FUEL TANK, L (GREEN)	1	
3	44018H2C050HF07	COVER SET, FUEL TANK, L (BLUE)	1	
3	44018H2C050HF08	COVER SET, FUEL TANK, L (PEARL WHITE)	1	
3	44018H2C050HF09	COVER SET, FUEL TANK, L (PEARL BLACK)	1	
3-1	44281H2C000H000	COVER, FUEL TANK FRONT L	1	
3-2	92125-33GC0-000	SCREW, L ID INNER COVER	2	
3-3	44256H22500H000	SEPARATOR	4	

4



Fig. 30

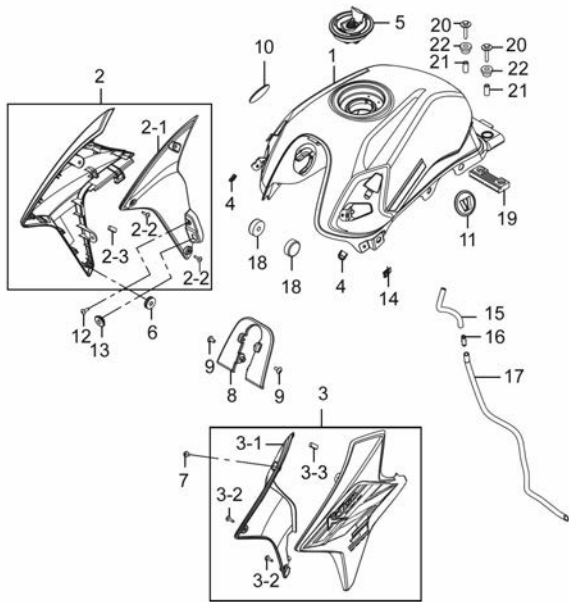


Fig.30 FUEL TANK (P05-S290-0039)

REF. No.	PART No.	DESCRIPTION	Q' TY	REMARKS
4	62478H22500H000	BUSH, RUBBER	2	
5	44200H2C100H000	CAP ASSY, FUEL TANK FILLER	1	
6	09320-08513-000	CUSHION	2	
7	02142-0514B-000	CROSS RECESSED HEAD SCREW	2	
8	44267H2C000H000	SHIELD, FUEL TANK	1	
9	02142-0612A-000	CROSS RECESSED HEAD SCREW	2	
10	68113H2C000H000	EMBLEM, FUEL TANK, R	1	
11	68123H2C000H000	EMBLEM, FUEL TANK, L	1	
12	03241-0516B-000	SCREW	2	
13	47312H02100H000	RUBBER CUSHION	2	
14	09148-05L08-000	NUT	2	
15	44423H2C000H000	HOSE, FUEL TANK DRAIN, NO. 1	1	
16	09367H07001H000	JOINT, HOSE	1	
17	44424H2C000H000	HOSE, FUEL TANK DRAIN, NO. 2	1	
18	44281-12FH0-000	CUSHION, FRONT	2	
19	44542-38300-000	CUSHION, FUEL TANK REAR NO. 1	1	
20	09116-06084-000	BOLT, FUEL TANK REAR	2	
21	09180-06067-000	SPACER, FUEL TANK REAR	2	
22	44542-36H10-000	CUSHION, FUEL TANK REAR UPPER	2	

4

Fig. 31

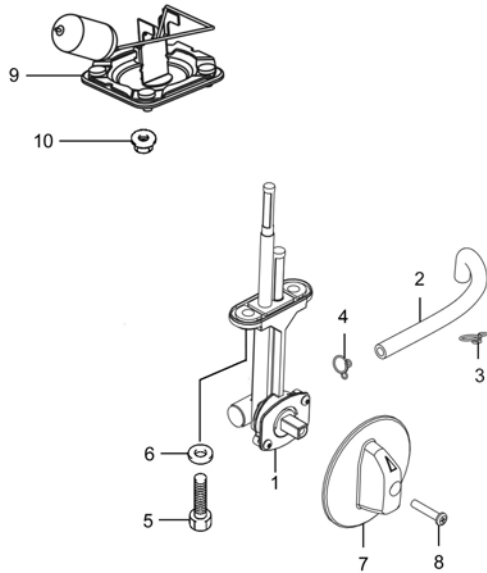


Fig.31 FUEL COCK (P05-S300-0019)

REF. No.	PART No.	DESCRIPTION	Q' TY	REMARKS
1	44300H2C000H000	COCK ASSY, FUEL	1	
2	44421H2C000H000	HOSE, OUTLET	1	
3	09401H08302H000	CLAMP	1	
4	09401-09101-000	CLAMP	1	
5	09128-06006-000	BOLT, FUEL COCK	2	
6	44366-45FA0-000	GASKET	2	
7	44352H2C000H000	COVER, FUEL COCK	1	
8	02112-0418A-000	CROSS RECESSED HEAD SCREW	1	
9	34810H2C001H000	GAUGE ASSY, FUEL LEVEL SENDER	1	
10	08316-1006A-000	NUT	4	

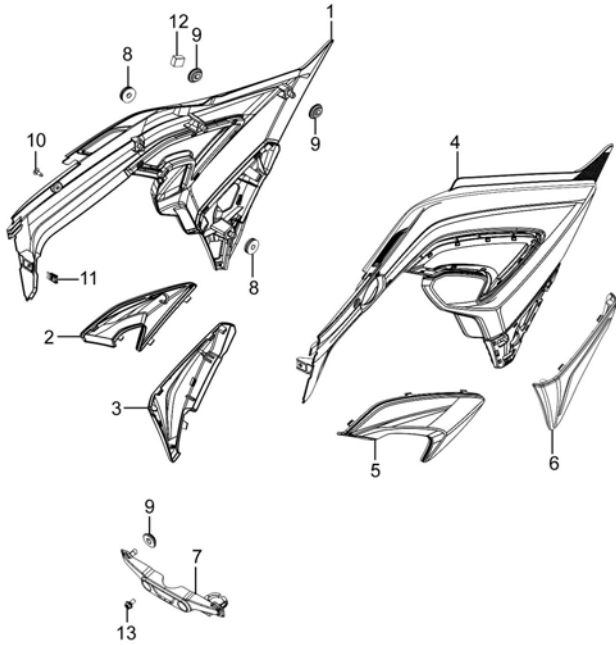
4



Fig. 32

Fig.32 FRAME COVER (P05-S310-0038)

REF. No.	PART No.	DESCRIPTION	Q' TY	REMARKS
1	47111H2C001H000	COVER, FRAME, R	1	
2	47112H2C000H838	LID, FRAME COVER, R (GRAY)	1	
3	47121H2C000H838	COVER, SIDE RIGHT, LWR (GRAY)	1	
4	47211H2C000H000	COVER, FRAME, L	1	
5	47212H2C000H838	LID, FRAME COVER, L (GRAY)	1	
6	47221H2C000H838	COVER, SIDE LEFT, LWR (GRAY)	1	
7	44151H2C000H000	BRACKET, FUEL TANK FRONT COVER	1	
8	09320-08513-000	CUSHION	4	
9	47312H02100H000	RUBBER CUSHION	6	
10	03241-0516B-000	SCREW	2	
11	09148-05L08-000	NUT	2	
12	47115H2C000H000	CUSHION, FRAME COVER	2	
13	09111-06106-000	BOLT	2	



4



Fig. 33

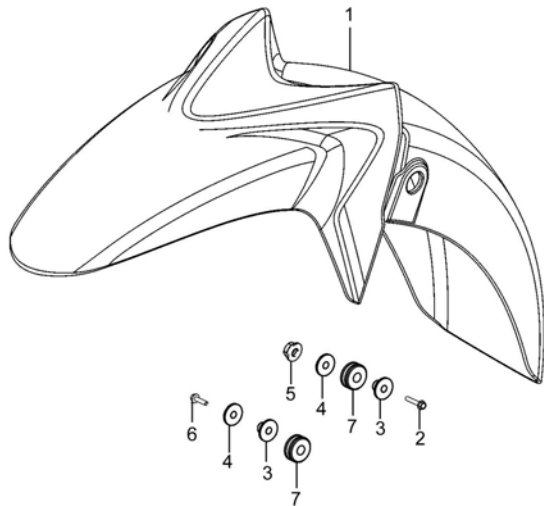


Fig.33 FRONT FENDER (P05-S320-0023)

REF. No.	PART No.	DESCRIPTION	Q' TY	REMARKS
1	53111H2C000HA96	FENDER, FRONT (RED)	1	
1	53111H2C000HA94	FENDER, FRONT (GREEN)	1	
1	53111H2C000HA34	FENDER, FRONT (BLUE/MATTE BLACK)	1	
1	53111H2C000HA36	FENDER, FRONT (PEARL WHITE/MATTE BLACK)	1	
1	53111H2C000HA42	FENDER, FRONT (PEARL BLACK/MATTE BLACK)	1	
2	01547-0635A-000	BOLT	2	
3	09180H06022H000	SPACER	4	
4	09160-06088-000	WASHER, REAR COMB LAMP	4	
5	08316-1006A-000	NUT	2	
6	01547-0625A-000	BOLT	2	
7	09320-08047-000	CUSHION, SEAT TAIL COVER FRONT	4	

4



Fig. 34

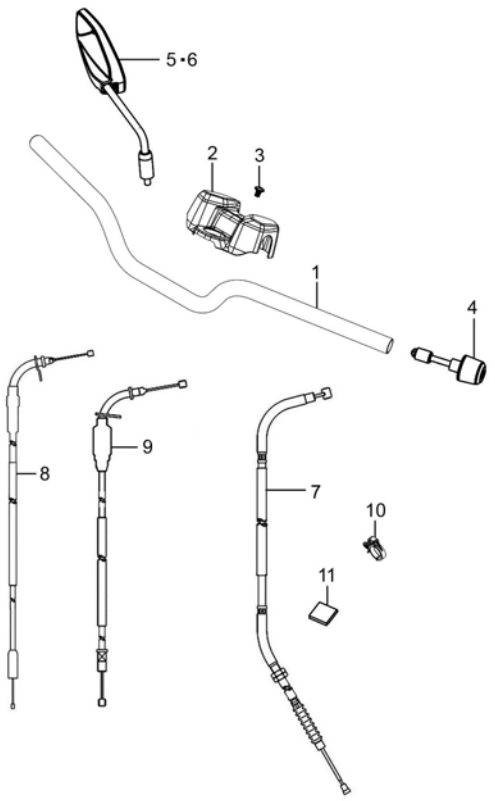


Fig.34 HANDLEBAR (P05-S330-0042)

REF. No.	PART No.	DESCRIPTION	Q' TY	REMARKS
1	56111H2C000H000	HANDLEBAR	1	
2	56171H2C001H000	COVER, STEERING HEAD	1	
3	09139H06007H000	SCREW	1	
4	56270H2C000H000	BALANCER ASSY, HANDLEBAR	2	
5	56500H2A260H000	MIRROR ASSY, REAR VIEW, R	1	
6	56600H2A260H000	MIRROR ASSY, REAR VIEW, L	1	
7	58200H2C000H000	CABLE ASSY, CLUTCH	1	
8	58300H2C000H000	CABLE ASSY, THROTTLE	1	
9	58410H2C000H000	CABLE COMP, STARTER	1	
10	09403H18409H000	CLAMP	1	
11	44281-04HA0-000	CUSHION, FUEL TANK	1	

4

Fig. 35

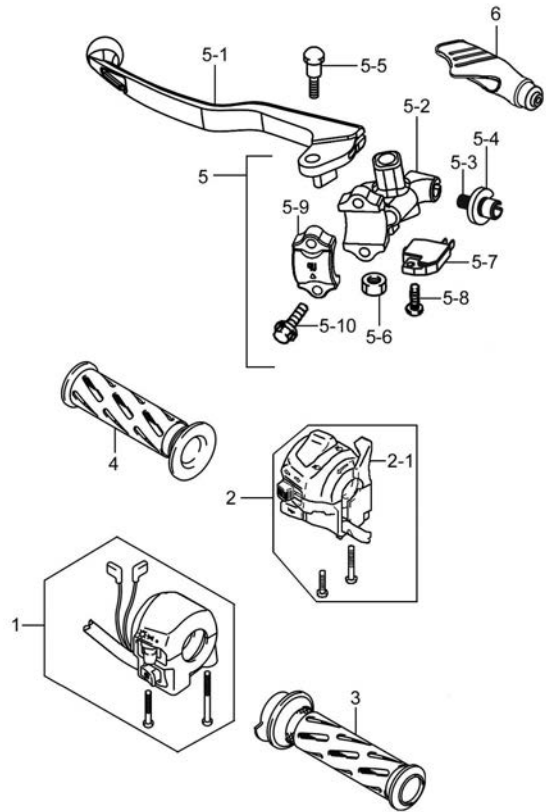


Fig.35 HANDLE SWITCH (P05-S340-0037)

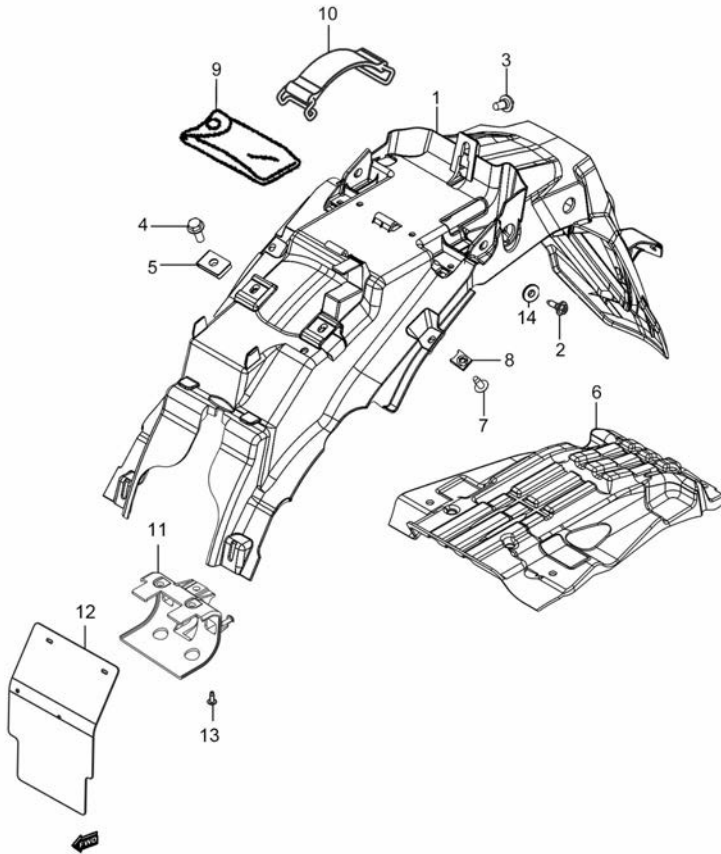
REF. No.	PART No.	DESCRIPTION	Q'TY	REMARKS
1	37200H2A001H000	SWITCH ASSY, HANDLE, R	1	
2	37400H2A002H000	SWITCH ASSY, HANDLE, L	1	
2-1	37571H05503H000	LEVER, CHOKE	1	
3	57110-28G10-000	GRIP COMP THROTTLE	1	
4	57211-45FB0-000	GRIP, L	1	
5	57500H053E0H000	LEVER ASSY, CLUTCH & SWITCH	1	
5-1	57621H053C0H000	LEVER, CLUTCH	1	
5-2	57511-053B0-000	HOLDER, LEVER	1	
5-3	57441-053B0-000	ADJUSTER, BRAKE CABLE	1	
5-4	57442-053B0-000	NUT, LOCK	1	
5-5	57431-45C01-000	BOLT, LEVER	1	
5-6	57518H2C100H000	NUT	1	
5-7	57560-28G11-000	SWITCH ASSY, CLUTCH	1	
5-8	02112-0410A-000	CROSS RECESSED HEAD SCREW	1	
5-9	57512-45F00-000	BRACKET	1	
5-10	01547-0622B-000	BOLTS, HEXAGON HEAD FLANGE	2	
6	57661-05300-000	COVER, CLUTCH LEVER	1	

4

Fig. 36

Fig.36 REAR FENDER (P05-S350-0020)

REF. No.	PART No.	DESCRIPTION	Q' TY	REMARKS
1	63111H2C003H000	FENDER, REAR	1	
2	01550-0620A-000	BOLTS, HEXAGON HEAD FLANGE	2	
3	09111-06106-000	BOLT	1	
4	01550-0616A-000	BOLT	2	
5	93162-37G00-000	NUT	2	
6	63151H2C000H000	INNER SCALEBOARD, REAR FENDER	1	
7	03241-0512A-000	CROSS RECESSED HEAD TAPPING SCREW	6	
8	09148-05077-000	NUT	8	
9	09800H20015H000	TOOL ASSY	1	
10	47435-45FA0-000	BAND, REAR BOX	1	
11	18565H2C000H000	BRACKET, CANISTER	1	
12	18566H2C000H000	MUDGUARD	1	
13	92125-33GC0-000	SCREW, LID INNER COVER	3	
14	09180H06025H000	SPACER	2	



4

Fig. 37

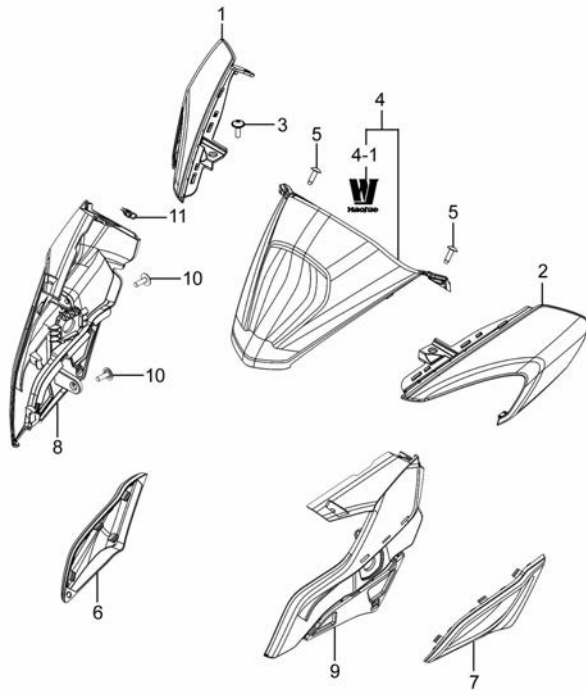


Fig.37 COWLING (P05-S360-0019)

REF. No.	PART No.	DESCRIPTION	Q' TY	REMARKS
1	94414H2C000H105	PANEL, COWLING, FRONT, R (RED)	1	
1	94414H2C000H412	PANEL, COWLING, FRONT, R (GREEN)	1	
1	94414H2C000H623	PANEL, COWLING, FRONT, R (BLUE)	1	
1	94414H2C000H901	PANEL, COWLING, FRONT, R (PEARL WHITE)	1	
1	94414H2C000H501	PANEL, COWLING, FRONT, R (PEARL BLACK)	1	
2	94424H2C000H105	PANEL, COWLING, FRONT, L (RED)	1	
2	94424H2C000H412	PANEL, COWLING, FRONT, L (GREEN)	1	
2	94424H2C000H623	PANEL, COWLING, FRONT, L (BLUE)	1	
2	94424H2C000H901	PANEL, COWLING, FRONT, L (PEARL WHITE)	1	
2	94424H2C000H501	PANEL, COWLING, FRONT, L (PEARL BLACK)	1	
3	35151-21J00-000	SCREW, HEADLAMP	2	
4	51082H2C00AHF01	COVER SET, HEADLAMP UPPER (BLACK)	1	
4-1	68170H79001HSIL	LOGO (SIL)	1	
5	03241-0516B-000	SCREW	2	
6	94417H2C000H827	COVER, HEADLAMP, R (SILVER)	1	
7	94427H2C000H827	COVER, HEADLAMP, L (SILVER)	1	
8	51831H2C000H511	COVER, HEADLAMP HSG, R (BLACK)	1	
9	51841H2C000H511	COVER, HEADLAMP SIDE, L (BLACK)	1	
10	35151-21J00-000	SCREW, HEADLAMP	4	
11	09148-05077-000	NUT	2	

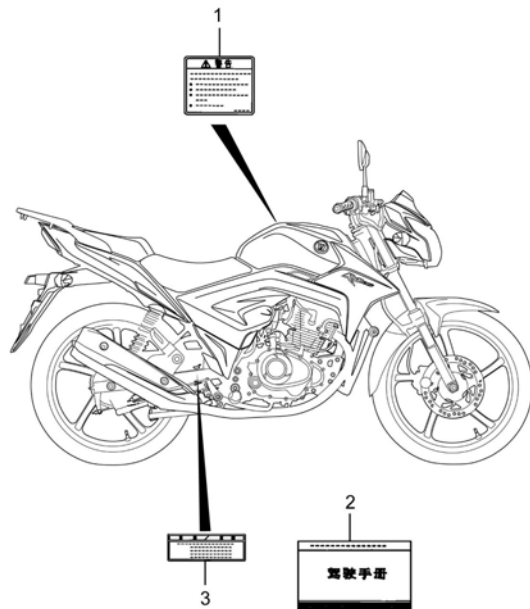
4



Fig. 38

Fig.38 LABEL (P05-S370-0044)

REF. No.	PART No.	DESCRIPTION	Q' TY	REMARKS
1	68319H22510H000	LABEL, GENERAL WARNING	1	
2	99011H2C051H000	MANUAL, OWNER'S	1	
3	68332H12911H000	LABEL, TIRE INFORMATION	1	



4

Fig. 39

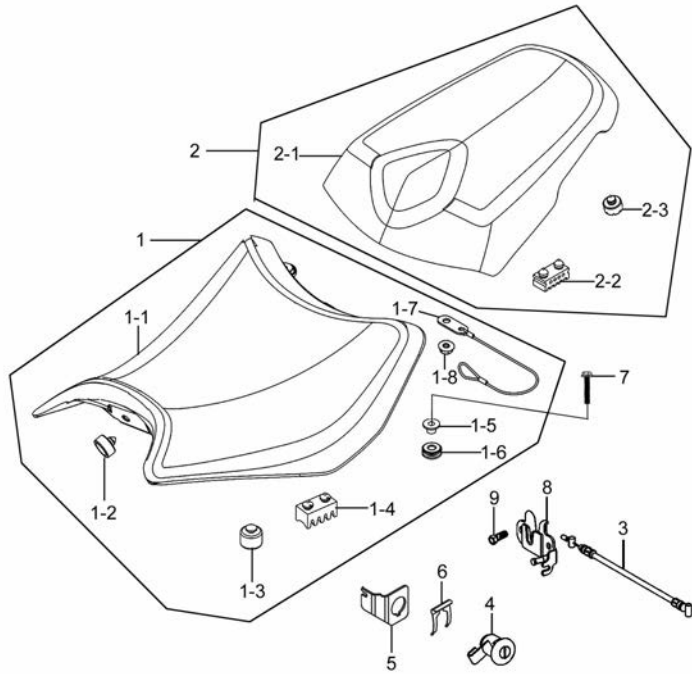


Fig.39 SEAT (P05-S380-0020)

REF. No.	PART No.	DESCRIPTION	Q'TY	REMARKS
1	45100H2C001H000	SEAT ASSY	1	
1-1	45160H2C000H000	COVER COMP, SEAT	1	
1-2	45148-33G00-000	CUSHION, SEAT MOUNT REAR	2	
1-3	45149-21200-000	CUSHION, ROUND	2	
1-4	45149H36300H000	CUSHION, SEAT MOUNT CTR	2	
1-5	09180H06022H000	SPACER	2	
1-6	09320-08047-000	CUSHION, SEAT TAIL COVER FRONT	2	
1-7	45130H2C000H000	BAND ASSY, HELMET	1	
1-8	08316-1006A-000	NUT	1	
2	45300H2C002H000	SEAT ASSY, PILLION	1	
2-1	45160H2C011H000	COVER COMP, SEAT	1	
2-2	45147-12FB0-000	CUSHION, SEAT MOUNT	2	
2-3	45148-20G00-000	CUSHION, SEAT MOUNT REAR	2	
3	45280H2C000H000	CABLE COMP, SEAT LOCK	1	
4	95700H52110H000	LOCK ASSY, SEAT NO. 1	1	
5	95711H52110H000	BRACKET, SEAT LOCK	1	
6	95721H52110H000	PLATE, SEAT LOCK NO. 2	1	
7	01550-0625A-000	BOLT	2	
8	45700-09GA0-000	LOCK ASSY, SEAT NO. 1	1	
9	01547-0610A-000	BOLTS, HEXAGON HEAD FLANGE	2	

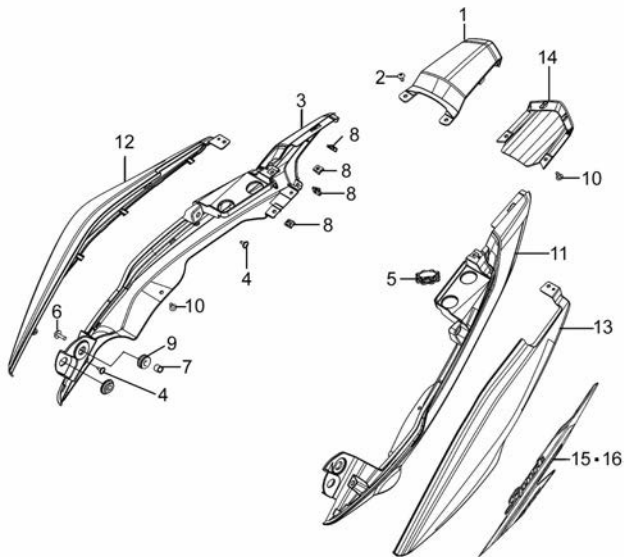
4



Fig. 40

Fig.40 COVER,SEAT TAIL (P05-S390-0032)

REF. No.	PART No.	DESCRIPTION	Q' TY	REMARKS
1	45513H2C000H511	COVER, SEAT TAIL, CTR (BLACK)	1	
2	03241-0516B-000	SCREW	2	
3	45511H2C000H511	COVER, SEAT TAIL, R (BLACK)	1	
4	09136H04003H000	SCREW WITH WASHER	4	
5	09320H22002H000	CUSHION	4	
6	09136H06002H000	SCREW WITH WASHER	2	
7	09180-06263-000	SPACER, CYL COWLING (L9)	2	
8	09148-05077-000	NUT	8	
9	09320-08047-000	CUSHION, SEAT TAIL COVER FRONT	2	
10	03241-0512B-000	SCREW	4	
11	45512H2C000H511	COVER, SEAT TAIL, L (BLACK)	1	
12	45541H2C001H105	LID, SEAT TAIL COVER, R (RED)	1	
12	45541H2C001H412	LID, SEAT TAIL COVER, R (GREEN)	1	
12	45541H2C001H623	LID, SEAT TAIL COVER, R (BLUE)	1	
12	45541H2C001H901	LID, SEAT TAIL COVER, R (PEARL WHITE)	1	
12	45541H2C001H501	LID, SEAT TAIL COVER, R (PEARL BLACK)	1	
13	45542H2C001H105	LID, SEAT TAIL COVER, L (RED)	1	
13	45542H2C001H412	LID, SEAT TAIL COVER, L (GREEN)	1	
13	45542H2C001H623	LID, SEAT TAIL COVER, L (BLUE)	1	
13	45542H2C001H901	LID, SEAT TAIL COVER, L (PEARL WHITE)	1	
13	45542H2C001H501	LID, SEAT TAIL COVER, L (PEARL BLACK)	1	



4

Fig. 40

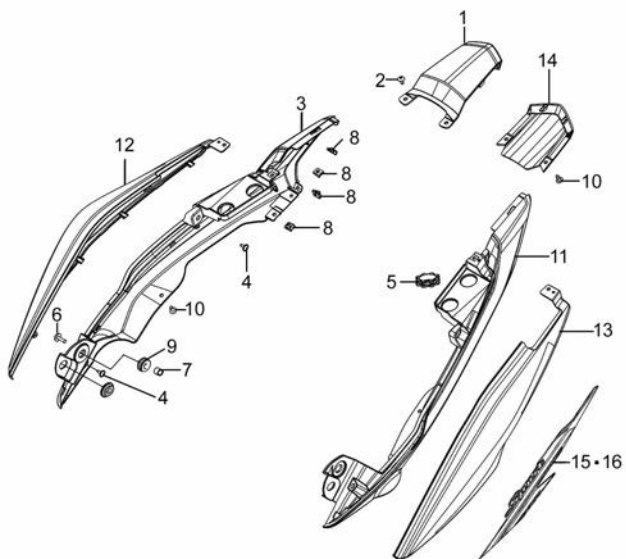


Fig.40 COVER,SEAT TAIL (P05-S390-0032)

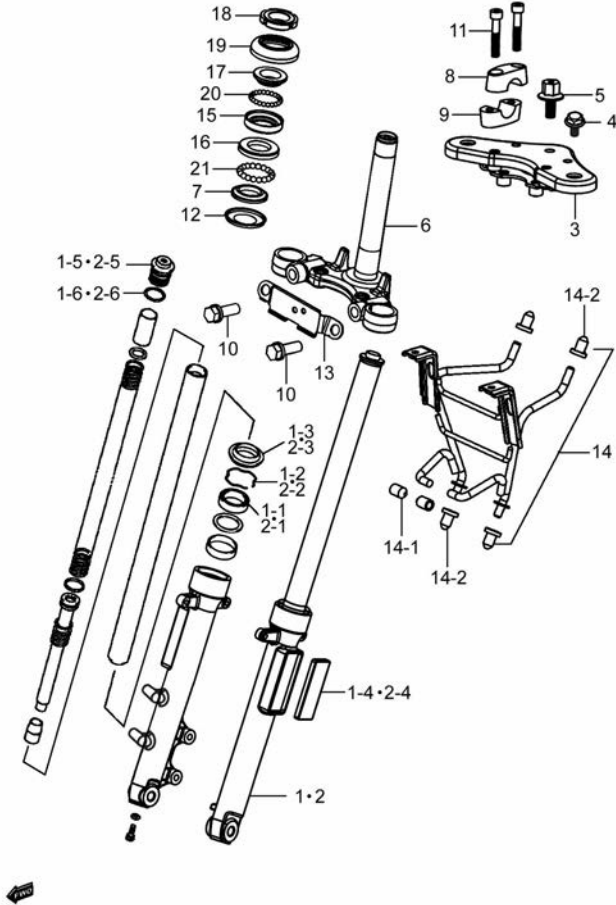
REF. No.	PART No.	DESCRIPTION	Q' TY	REMARKS
14	47321H2C000H511	COVER, FRAME LOWER (BLACK)	1	
15	68161H2C000HSH5	TAPE, SEAT TAIL COVER, R (SH5)	1	
15	68161H2C000HSH8	TAPE, SEAT TAIL COVER, R (SH8)	1	
15	68161H2C000HUG6	TAPE, SEAT TAIL COVER, R (UG6)	1	
15	68161H2C000HR01	TAPE, SEAT TAIL COVER, R (R01)	1	
15	68161H2C000HSH7	TAPE, SEAT TAIL COVER, R (SH7)	1	
16	68171H2C000HSH5	TAPE, SEAT TAIL COVER, L (SH5)	1	
16	68171H2C000HSH8	TAPE, SEAT TAIL COVER, L (SH8)	1	
16	68171H2C000HUG6	TAPE, SEAT TAIL COVER, L (UG6)	1	
16	68171H2C000HR01	TAPE, SEAT TAIL COVER, L (R01)	1	
16	68171H2C000HSH7	TAPE, SEAT TAIL COVER, L (SH7)	1	

4



Fig. 41

Fig.41 STEERING STEM (P05-S400-0039)



REF. No.	PART No.	DESCRIPTION	Q' TY	REMARKS
1	51103H2C000H518	DAMPER ASSY, FRONT FORK, R (BLACK)	1	
1-1	51153-45F40-000	OIL SEAL	1	
1-2	51156-45F40-000	RING, OIL SEAL STOPPER	1	
1-3	51173H2A000H000	COVER, DUST SEAL	1	
1-4	35950H2A000H000	REFLEX REFLECTOR ASSY, FR SIDE	1	
1-5	51189H2C000H000	CAP	1	
1-6	51117-45F40-000	O RING	1	
2	51104H2C000H518	DAMPER ASSY, FRONT FORK, L (BLACK)	1	
2-1	51153-45F40-000	OIL SEAL	1	
2-2	51156-45F40-000	RING, OIL SEAL STOPPER	1	
2-3	51173H2A000H000	COVER, DUST SEAL	1	
2-4	35950H2A000H000	REFLEX REFLECTOR ASSY, FR SIDE	1	
2-5	51189H2C000H000	CAP	1	
2-6	51117-45F40-000	O RING	1	
3	51310H2C000H000	BRACKET COMP, UPPER	1	
4	51352H2C001H000	BOLT	2	
5	09103H10002H000	BOLT, HEXAGON	1	
6	51410H2A521H000	BRACKET COMP, UNDER	1	
7	51622H2A200H000	RACE, STEERING OUTER LOWER	1	
8	56211-45F10-000	HOLDER, HANDLE UPPER	2	
9	56221-45F10-000	HOLDER, HANDLE LOWER	2	
10	01570-1235A-000	HEXAGON HEAD BOLT SET	2	
11	07130-0845A-000	HEXAGON SOCKET HEAD CAP SCREW	4	
12	51644-45FA0-000	SEAL, STEERING, LOWER	1	
13	51881H2C001H000	BRACKET, FRONT FORK COVER	1	
14	51520H2C000H000	BRACKET ASSY, HEADLAMP	1	
14-1	51827H2A101H000	CUSHION, HEADLAMP HSG BRACE	2	
14-2	51589H22500H000	RUBBER	4	
15	51611H2A201H000	RACE, STEERING INNER UPPER	1	

Fig. 41

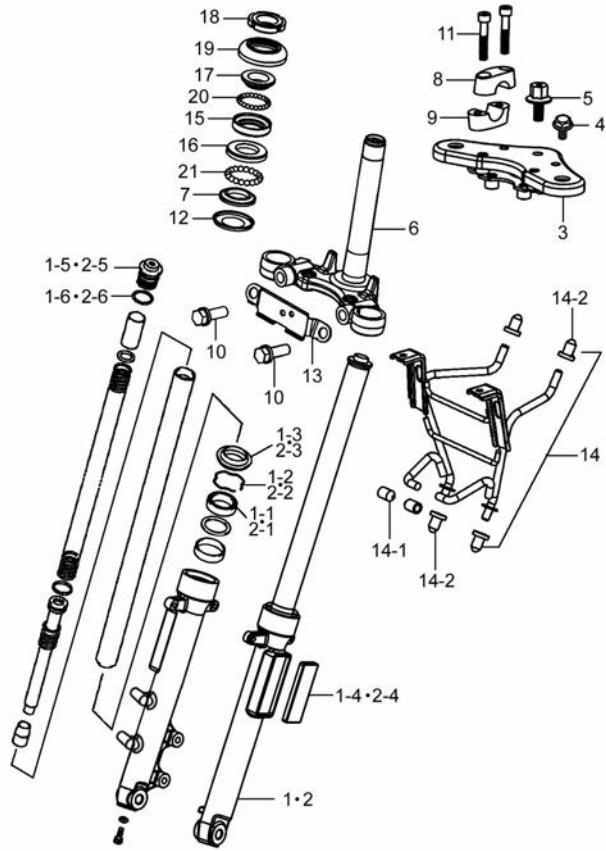


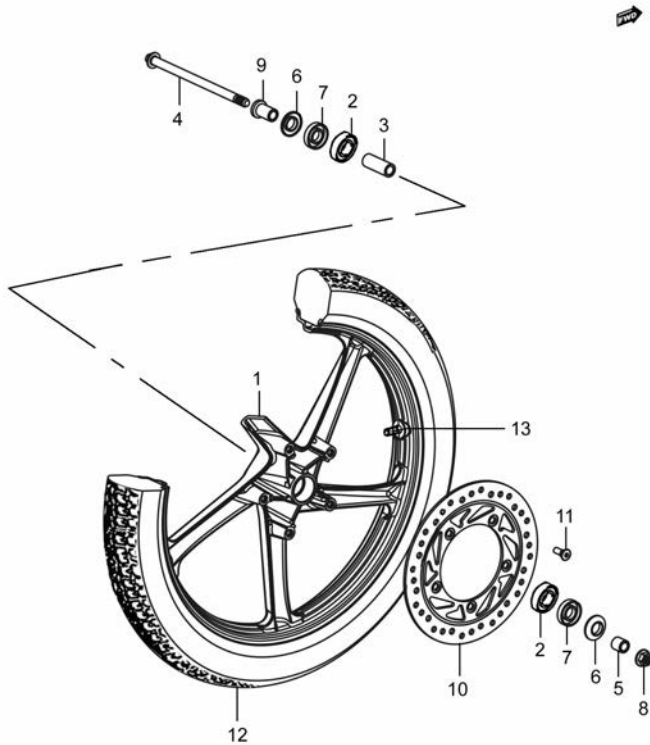
Fig.41 STEERING STEM (P05-S400-0039)

REF. No.	PART No.	DESCRIPTION	Q' TY	REMARKS
16	51612H2A200H000	RACE, STEERING INNER LOWER	1	
17	51621H2A200H000	RACE, STEERING OUTER, UPPER	1	
18	51631-48H00-000	NUT, STEERING STEM	1	
19	51643H2A200H000	SEAL, STEERING DUST UPPER	1	
20	51610H2A200H000	BALL, STEERING STEEL UPPER	1	
21	51620H2A200H000	BALL, STEERING STEEL LOWER	1	

4

Fig. 42

Fig.42 FRONT WHEEL (P05-S410-0030)



REF. No.	PART No.	DESCRIPTION	Q' TY	REMARKS
1	54111H2C001HA99	WHEEL, FRONT (ORANGE)	1	
1	54111H2C001HA98	WHEEL, FRONT (GREEN)	1	
2	08133-6301B-000	BALL BEARING	2	
3	54731H2A000H000	SPACER, FRONT WHEEL BRG	1	
4	54711-05310-000	AXLE, FRONT	1	
5	54741H2A000H000	SPACER, FRONT AXLE, R	1	
6	54892-45F00-000	COVER, FRONT HUB DUST SEAL	2	
7	54742-45F00-000	SEAL, FRONT HUB	2	
8	08319-3112A-000	U-NUT	1	
9	54751H2A000H000	SPACER, FRONT AXLE, L	1	
10	59211H2C000H504	DISC, FRONT BRAKE (BLACK)	1	
11	59421H45HA0H000	BOLT, FRONT BRAKE DISC	5	
12	55100H25300H000	TIRE COMP, FRONT	1	
13	43130H22500H000	VALVE ASSY, WHEEL RIM	1	

4

Fig. 43

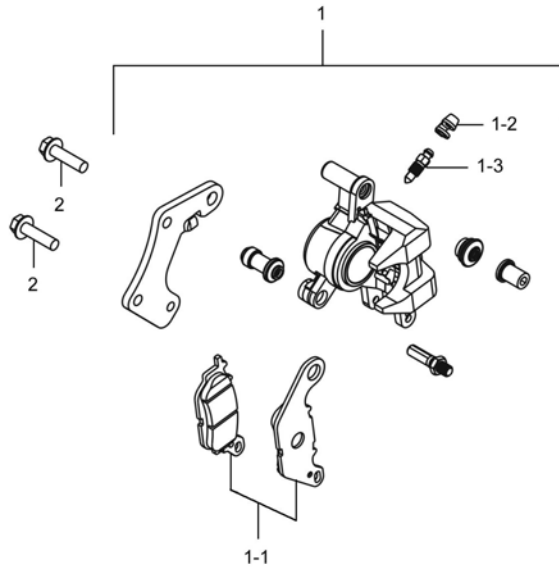


Fig.43 FRONT CALIPER (P05-S420-0012)

REF. No.	PART No.	DESCRIPTION	Q' TY	REMARKS
1	59300H2C001H105	CALIPER ASSY, FRONT (RED)	1	
1-1	59300H2CY01H000	PAD COMP	1	
1-2	55156-66310-000	CAP	1	
1-3	59121-05530-000	BLEEDER	1	
2	01550-0830A-000	BOLTS, HEXAGON HEAD FLANGE	2	

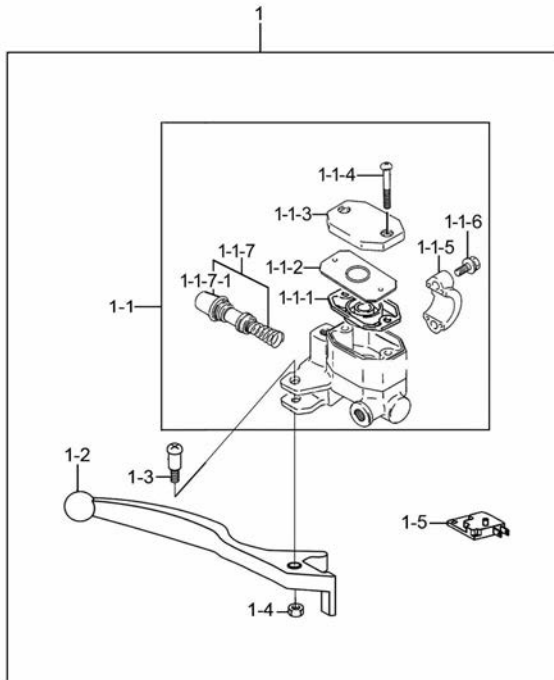
4



Fig. 44

Fig.44 FRONT BRAKE CYLINDER (P05-S430-0011)

REF. No.	PART No.	DESCRIPTION	Q' TY	REMARKS
1	59064H2A032H000	CYLINDER SET, FRONT MASTER	1	
1-1	59600H2A032H000	CYLINDER ASSY, FRONT MASTER	1	
1-1-1	59667-053B0-000	DIAPHRAGM	1	
1-1-2	59668H2G120H000	PLATE, DIAPERAGM	1	
1-1-3	59669H2A010H000	CAP, RESERVOIR TANK	1	
1-1-4	59689H2G120H000	SCREW	2	
1-1-5	59671H2C100H000	HOLDER	1	
1-1-6	59675H2A000H000	BOLT	2	
1-1-7	59660H7FY00H000	PISTON & CUP SET	1	
1-1-7-1	59666-44300-000	BOOT	1	
1-2	57421H45F10H000	LEVER, BRAKE, R	1	
1-3	57321-45F20-000	SCREW, BRAKE PIVOT	1	
1-4	57433-09F00-000	NUT, BRAKE LEVER PIVOT	1	
1-5	57460-17C11-000	SWITCH ASSY, STOP	1	



4



Fig. 45

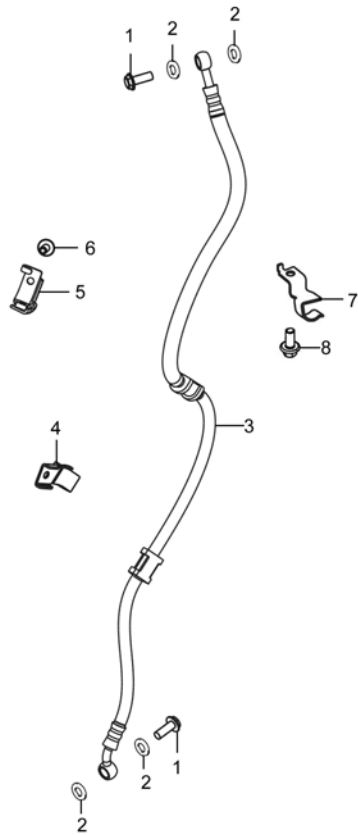


Fig.45 HOSE,FRONT BRAKE (P05-S435-0022)

REF. No.	PART No.	DESCRIPTION	Q' TY	REMARKS
1	09360-10039-000	BOLT, BRAKE FLUID	2	
2	09161-10009-000	WASHER, BRAKE FLUID	4	
3	59480H2C020H000	HOSE COMP, FRONT BRAKE	1	
4	59246H2C001H000	CLAMP, FR BRAKE HOSE	1	
5	59268H2D010H000	CLAMP, BRAKE HOSE	1	
6	01570-0612A-000	HEXAGON HEAD BOLT	1	
7	59268H2G110H000	CLAMP, BRAKE HOSE	1	
8	01547-0610A-000	BOLTS, HEXAGON HEAD FLANGE	1	

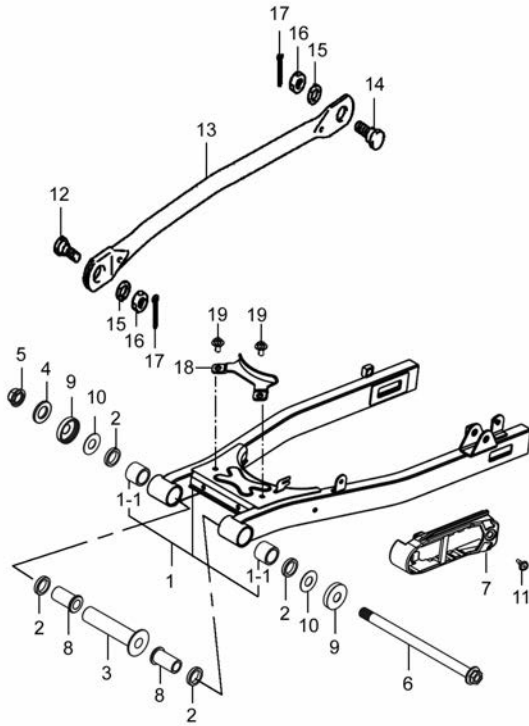
4



Fig. 46

Fig.46 REAR SWINGING ARM (P05-S440-0005)

REF. No.	PART No.	DESCRIPTION	Q' TY	REMARKS
1	61019H2C002H000	SWINGINGARM SET, REAR	1	
1-1	61261-05341-000	BUSH, REAR SWGARM PIVOT	2	
2	09285-20005-000	SEAL	4	
3	61280H2A410H000	SPACER COMP, RR SWGARM PIVOT	1	
4	08322-0114A-000	PLAIN WASHER	1	
5	08319-2114A-000	U-NUT	1	
6	61211H2A200H000	SHAFT, RR SWG ARM PIVOT	1	
7	61273H2C010H000	BUFFER, CHAIN TOUCH DEFENSE	1	
8	61251-05300-000	SPACER, RR SWGARM PIVOT	2	
9	61262-05300-000	COVER, RR SWGARM PIVOT	2	
10	08211-14321-000	WASHER	2	
11	09409-06322-000	CLIP, LEG LOWER	1	
12	64321-29J00-000	BOLT, RR TORQUELINK FRONT	1	
13	64310-26H00-000	TORQUELINK COMP, REAR	1	
14	09111-08013-000	BOLT	1	
15	09162-08008-000	LOCK WASHER, RR TORQUELINK	2	
16	09140H08001H000	NUT	2	
17	04111-2020A-000	COTTER PIN	2	
18	63121H2C000H000	COVER, REAR FENDER	1	
19	09111-06106-000	BOLT	2	



4

Fig. 47

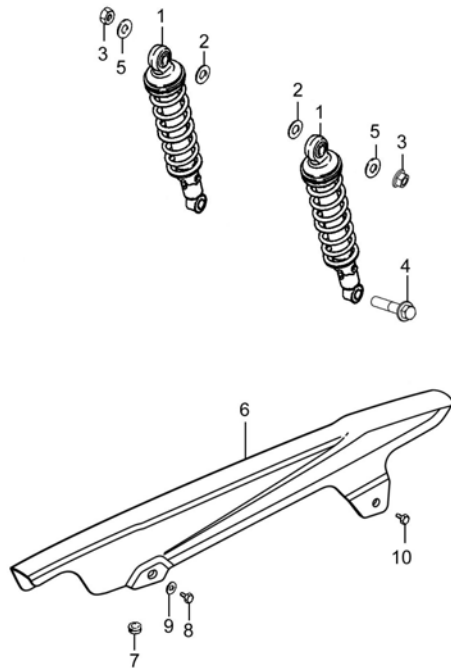


Fig.47 REARSHOCK ABSORBER (P05-S450-0014)

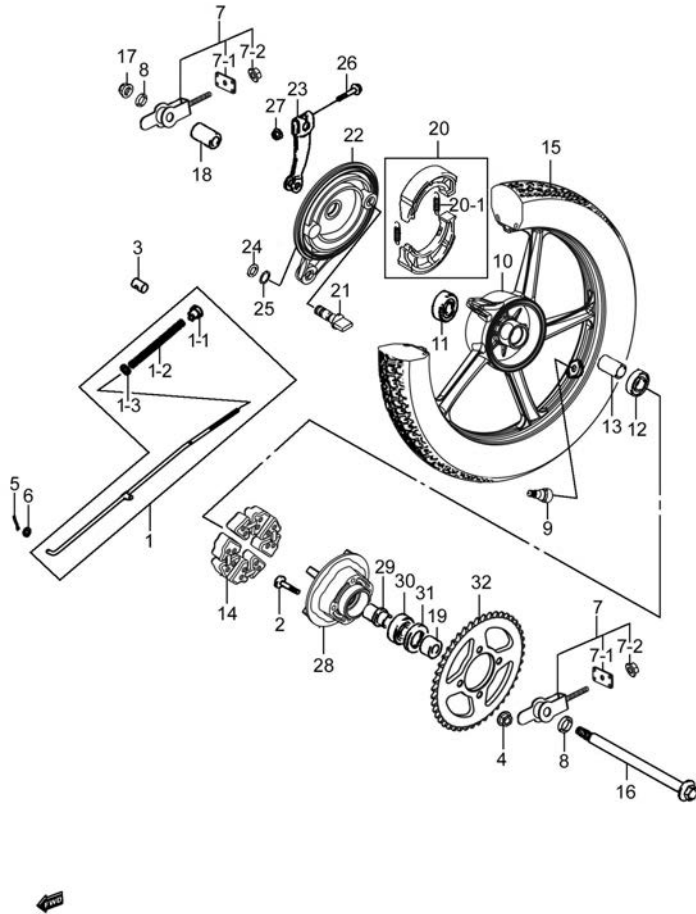
REF. No.	PART No.	DESCRIPTION	Q' TY	REMARKS
1	62100H2C000H105	ABSORBER ASSY, REAR SHOCK (RED)	2	
2	62145H45F00H000	WASHER, RR SHK ABS INNER	2	
3	08316-1010A-000	NUT	2	
4	09103-10041-000	BOLT	2	
5	09160H10033H000	WASHER, PLAIN	2	
6	61311H2C000H000	CASE, CHAIN	1	
7	09320-08513-000	CUSHION	1	
8	01550-0610A-000	BOLTS, HEXAGON HEAD FLANGE	1	
9	61315-45F00-000	WASHER, CHAIN CASE	1	
10	01550-0612A-000	BOLT	1	

4



Fig. 48

Fig.48 REAR WHEEL (P05-S460-0031)



REF. No.	PART No.	DESCRIPTION	Q' TY	REMARKS
1	43031H2C000H000	ROD SET, REARBRAKE	1	
1-1	09150-06010-000	NUT	1	
1-2	09440H09007H000	SPRING, COMPRESSION	1	
1-3	08322-0106A-000	WASHER, PLAIN	1	
2	09119H08002H000	BOLT	4	
3	09209-11002-000	PIN, REAR BRAKE ROD LEVER	1	
4	08319-3108A-000	NUT	4	
5	04111-2015A-000	COTTER PIN	1	
6	08322-0106A-000	WASHER, PLAIN	1	
7	61041H2C000H000	ADJUSTER SET, CHAIN	2	
7-1	61421H2C000H000	PLATE, CHAIN ADJUSTER GUIDE	1	
7-2	08319-3108A-000	NUT	1	
8	64712H2C010H000	WASHER, CHAIN ADJUSTER	2	
9	43130H22500H000	VALVE ASSY, WHEEL RIM	1	
10	64150H2C002HA99	WHEEL COMP, REAR (ORANGE)	1	
10	64150H2C002HA98	WHEEL COMP, REAR (GREEN)	1	
11	08144-6302B-000	BALL BEARING	1	
12	08143-6202B-000	BALL BEARING	1	
13	64731-45F00-000	SPACER, REAR HUB BEARING	1	
14	64651H2C000H000	ABSORBER, REAR HUB SHOCK	4	
15	65100H25300H000	TIRE COMP, REAR	1	
16	64711H2C000H000	AXLE, REAR	1	
17	08319-3114A-000	U-NUT	1	
18	64741H2C000H000	SPACER, REAR AXLE, R	1	
19	64751H41100H000	SPACER, REAR AXLE, L	1	
20	54400H17Y00H000	SHOE COMP, BRAKE	1	
20-1	55421-45F10-000	SPRING, BRAKE SHOE	2	
21	54441H45F11H000	CAM, FRONT BRAKE	1	
22	64210H2E020H000	PANEL COMP, REAR BRAKE	1	

Fig. 48

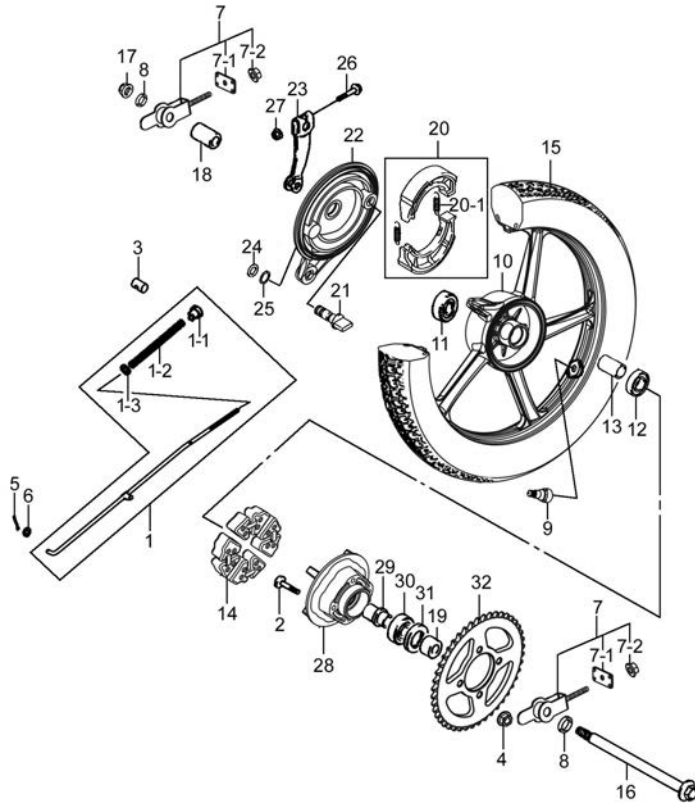


Fig.48 REAR WHEEL (P05-S460-0031)

REF. No.	PART No.	DESCRIPTION	Q' TY	REMARKS
23	64451H21710H000	LEVER, REAR BRAKE CAM	1	
24	09160H14002H000	WASHER, PLAIN	1	
25	09280-14003-000	O-RING, REAR BRAKE CAM	1	
26	01550-0635A-000	BOLT	1	
27	08316-1006A-000	NUT	1	
28	64610H22500H000	DRUM COMP, REAR SPROCKET	1	
29	64733-05301-000	RETAINER, RR SPROCKET DRUM	1	
30	08113-6204B-000	BALL BEARING	1	
31	09285H28001H000	SEAL, OIL	1	
32	64511H2C100H000	SPROCKET, REAR	1	

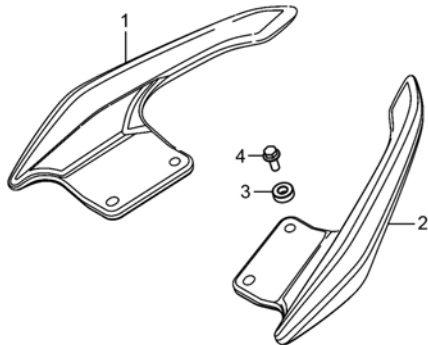
4



Fig. 49

Fig.49 CARRIER (P05-S480-0020)

REF. No.	PART No.	DESCRIPTION	Q' TY	REMARKS
1	46211H2C000H506	HANDLE, PILLION RIDER, R (BLACK)	1	
2	46231H2C000H506	HANDLE, PILLION RIDER, L (BLACK)	1	
3	46356H2A200H000	SPACER, REAR CARRIER	4	
4	01550-0830A-000	BOLTS, HEXAGON HEAD FLANGE	4	



4



PART NO.	FIG. NO. – REF. NO.	PART NO.	FIG. NO. – REF. NO.	PART NO.	FIG. NO. – REF. NO.	PART NO.	FIG. NO. – REF. NO.
00000		01550-0612A-000	12-6	03541-0416A-000	22-1-4	08316-1012A-000	05-18
		01550-0612A-000	26-15	03541-0516A-000	22-8	08319-2114A-000	46-5
		01550-0612A-000	47-10	03541-0525A-000	10-1-10	08319-3108A-000	01-21
		01550-0616A-000	10-2	04111-2015A-000	29-8	08319-3108A-000	03-20
		01550-0616A-000	21-7	04111-2015A-000	48-5	08319-3108A-000	27-5
01500-0620A-000	16-23	01550-0616A-000	28-21	04111-2020A-000	46-17	08319-3108A-000	48-4
01500-0825A-000	17-6	01550-0616A-000	36-4	04111-2525A-000	28-3	08319-3108A-000	48-7-2
01547-0610A-000	39-9	01550-0620A-000	12-4	04221-04109-000	16-9	08319-3110A-000	03-21
01547-0610A-000	45-8	01550-0620A-000	36-2	07130-0512A-000	22-4	08319-3110A-000	28-9
01547-0612A-000	12-14	01550-0622A-000	14-2-1	07130-0610A-000	15-11	08319-3112A-000	42-8
01547-0612A-000	03-3	01550-0625A-000	39-7	07130-0825A-000	11-2	08319-3114A-000	48-17
01547-0612A-000	04-9	01550-0635A-000	48-26	07130-0825A-000	22-5	08322-0106A-000	48-1-3
01547-0614A-000	05-16	01550-0830A-000	43-2	07130-0845A-000	41-11	08322-0106A-000	48-6
01547-0614A-000	03-10	01550-0830A-000	49-4	08110-60060-000	15-2	08322-0114A-000	46-4
01547-0614A-000	21-5	01550-1020A-000	29-3	08110-62030-000	05-13	08331-31129-000	16-15-6
01547-0616A-000	12-12	01550-1045A-000	11-4	08110-63010-000	05-12	08331-3112A-000	16-18
01547-0620A-000	08-8	01570-0612A-000	45-6	08113-6204B-000	48-30	08331-31149-000	16-15-3
01547-0620A-000	01-5	01570-1235A-000	41-10	08133-6301B-000	42-2	08331-31209-000	15-1-5
01547-0620A-000	04-21	02112-0410A-000	35-5-8	08140-60030-000	07-19	08331-31209-000	15-5-8
01547-0622B-000	35-5-10	02112-0418A-000	16-21	08143-6202B-000	48-12	08332-1112A-000	28-16
01547-0625A-000	19-3	02112-0418A-000	31-8	08144-6302B-000	48-11	08361-3506A-000	21-2
01547-0625A-000	33-6	02112-1520A-000	21-9	08211-14321-000	46-10	09100-06026-000	03-13
01547-0628A-000	04-4	02122-0512A-000	05-22	08211-15251-000	15-1-3	09100H05004H000	19-2
01547-0630A-000	18-2	02122-0616A-000	07-7	08211-15301-000	15-5-14	09100H06003H000	07-16
01547-0635A-000	33-2	02122-0630A-000	13-2	08211-20271-000	15-5-2	09100H06022H000	16-14
01547-0635A-000	04-24	02142-0512A-000	10-1-1	08310-00067-000	16-17-4	09103-10041-000	47-4
01547-0640A-000	04-5	02142-0514B-000	30-7	08310-0006A-000	01-19	09103H08013H000	01-20
01547-0645A-000	04-6	02142-0612A-000	30-9	08310-0006A-000	28-23	09103H08013H000	27-4
01547-0650A-000	03-5	03241-0512A-000	25-2	08310-0010A-000	24-3	09103H08015H000	03-18
01547-0650A-000	04-13	03241-0512A-000	36-7	08316-1006A-000	26-9	09103H08015H000	27-8
01547-0660A-000	03-6	03241-0512B-000	40-10	08316-1006A-000	31-10	09103H10002H000	41-5
01547-0665A-000	03-22	03241-0516B-000	30-12	08316-1006A-000	33-5	09103H10003H000	03-19
01547-0670A-000	04-14	03241-0516B-000	32-10	08316-1006A-000	39-1-8	09108H06014H000	01-17
01550-0610A-000	20-3	03241-0516B-000	37-5	08316-1006A-000	48-27	09111-06106-000	32-13
01550-0610A-000	47-8	03241-0516B-000	40-2	08316-1010A-000	47-3	09111-06106-000	36-3

5

PART NO.	FIG. NO. – REF. NO.	PART NO.	FIG. NO. – REF. NO.	PART NO.	FIG. NO. – REF. NO.	PART NO.	FIG. NO. – REF. NO.
09111-06106-000	46-19	09160H12012H000	16-19	09206H10007H000	03-1-1	09320-08513-000	30-6
09111-08013-000	46-14	09160H14002H000	48-24	09206H10007H000	04-12	09320-08513-000	32-8
09111H06010H000	23-2	09160H16004H000	05-24	09206H10008H000	01-9	09320-08513-000	47-7
09111H06012H000	10-3	09160H17001H000	28-14	09209-11002-000	48-3	09320-09016-000	23-3
09116-06084-000	30-20	09161-10009-000	45-2	09229H03003H000	27-10	09320H10023H000	11-12
09119H08002H000	48-2	09162-08008-000	46-15	09247-12104-000	04-15	09320H22002H000	40-5
09128-06006-000	31-5	09164H13001H000	05-10	09247H12001H000	03-23	09360-10039-000	45-1
09128H06001H000	16-10	09166H18001H000	05-28	09250H18001H000	27-11	09367H07001H000	30-16
09128H06006H000	01-8	09168-06023-000	01-6	09259H26002H000	04-17	09380H15001H000	17-1-11
09128H06010H000	08-6-1	09168-12002-000	04-16	09262H15035H000	15-3	09380H19001H000	17-1-9
09135H08004H000	08-2	09168H06002H000	11-14	09262H17001H000	14-8	09380H24001H000	05-9-5
09135H12001H000	17-3	09180-06067-000	30-21	09262H20017H000	15-7	09380H24002H000	05-9-6
09136H04003H000	40-4	09180-06263-000	40-7	09262H35005H000	05-6	09381H14001H000	05-4
09136H06002H000	40-6	09180H06022H000	33-3	09263H15002H000	15-8	09401-06101-000	12-16
09136H06003H000	21-10	09180H06022H000	39-1-5	09263H23000H000	16-11	09401-09101-000	31-4
09139-06048-000	26-12	09180H06025H000	36-14	09280-14003-000	48-25	09401-15404-000	12-15
09139H06001H000	28-18	09180H06336H000	11-13	09280-22008-000	04-18	09401H07201H000	12-9
09139H06006H000	11-10	09180H16002H000	05-17	09280H11001H000	17-4	09401H08302H000	31-3
09139H06007H000	34-3	09180H30001H000	15-4	09280H18002H000	04-26	09401H12302H000	10-8
09140-06011-000	16-17-2	09181-35108-000	05-7	09280H19001H000	16-22	09401H13201H000	10-1-3
09140H08001H000	46-16	09181H12002H000	05-19	09280H34002H000	01-18	09401H14302H000	10-7
09148-05077-000	36-8	09181H12003H000	07-18	09280H35000H000	13-3	09401H15201H000	12-2
09148-05077-000	37-11	09181H12004H000	17-1-12	09280H35001H000	03-16	09403H18409H000	34-10
09148-05077-000	40-8	09181H16200H000	16-15-2	09280H50003H000	01-14	09404-06038-000	26-6
09148-05L08-000	30-14	09181H17001H000	07-10	09280H63001H000	04-20	09407-11401-000	26-4
09148-05L08-000	32-11	09181H17240H000	15-5-10	09280H75001H000	01-3	09407-14403-000	26-2
09150-06010-000	48-1-1	09181H20001H000	17-1-6	09283H10002H000	07-1	09407-18402-000	26-3
09159H10004H000	11-8	09181H20270H000	15-1-10	09283H14001H000	16-16	09407H15401H000	26-5
09160-06088-000	33-4	09181H25002H000	05-9-7	09283H16001H000	17-2	09409-06322-000	46-11
09160-06164-000	11-11	09200H06004H000	29-7	09283H20007H000	15-6	09420H04002H000	05-5-1
09160-10102-000	11-5	09202H05004H000	05-9-4	09285-20005-000	46-2	09421H04001H000	05-11
09160-16043-000	28-5	09205H03001H000	04-29	09285H28001H000	48-31	09421H04003H000	05-29
09160H08003H000	01-12	09206H08002H000	04-23	09320-08047-000	33-7	09440H04030H000	16-6
09160H08011H000	08-3	09206H08004H000	04-3	09320-08047-000	39-1-6	09440H07002H000	03-9
09160H10033H000	47-5	09206H10007H000	02-4	09320-08047-000	40-9	09440H09001H000	05-9-3

PART NO.	FIG. NO. – REF. NO.	PART NO.	FIG. NO. – REF. NO.	PART NO.	FIG. NO. – REF. NO.	PART NO.	FIG. NO. – REF. NO.
09440H09007H000	48-1-2	11243H35000H000	02-2	12691H36000H000	06-6	13255H11200H000	09-1-1
09440H15002H000	16-15-5	11244H35000H000	02-3	12710H3D021H000	07-2	13257H11200H000	09-1-17
09443-19020-000	28-4	11300H3CY12H000	03-1	12741H35010H000	07-15	13258H11210H000	09-1-20
09443H14004H000	28-12	11340H2C020H000	04-1	12760H35030H000	08-5	13258H2C010H000	09-1-31
09448H15001H000	04-28	11351H2C000H000	04-10	12771H35000H000	08-4	13262H11200H000	09-1-13
09448H22001H000	07-17	11361H2C000H000	04-22	12811H3F000H000	08-1	13263H11200H000	09-1-23
09448H48003H000	17-1-2	11421H3C010H000	04-7	12830H36Y00H000	08-6	13267H33000H000	09-1-5
09471-12081-000	23-1-4	11441H36040H000	04-19	12837H35000H000	08-7	13268H33000H000	09-1-6
09471-12081-000	25-3-2	11481H3C000H000	03-4	12840H3D000H000	07-3	13270H12900H000	09-1-24
09471-12128-000	25-1-2	11482H3C000H000	04-2	12842H3D000H000	07-3-1	13279H36900H000	09-1-7
09471H12001H000	23-1-3	11483H36000H000	04-11	12852H33000H000	07-3-2	13282H21D00H000	09-1-10
09471H12019H000	24-1-2	11522H33000H000	03-24	12861H3D000H000	07-4	13285H2C010H000	09-1-30
09471H12019H000	24-2-2	11971H3E000H000	04-25	12862H35022H000	07-6	13295H21D00H000	09-1-18
09471H12019H000	24-5-2	12100H3E010H050	05-30	12871H3D000H000	07-5	13370H21D00H000	09-1-21
09471H12019H000	24-6-2	12111H3E010H050	05-30-1	12911H3E002H000	07-8	13383H2C030H000	09-1-3
09482-00399-000	01-15	12111H3E010H0B0	05-1	12912H3E010H000	07-9	13432H33000H000	09-1-16
09494H12900H000	09-1-26	12140H3E020H000	05-2	12921H3F000H000	07-12	13480H2C010H000	09-1-29
09800H20015H000	36-9	12140H3E030H050	05-30-2	12922H3F000H000	07-11	13573H11A10H000	09-1-2
		12151H3E000H000	05-3	12931H3E000H000	07-13	13683H2C030H000	09-1-28
		12200H3E010H000	05-5	12932H50100H000	07-14	13684H2C030H000	09-1-25
10000		12511H3C000H000	04-8	13110H3E001H000	01-16	13700H2C004H000	10-1
		12543H36010H000	03-8	13112H22500H000	09-2	13723H2C000H000	10-1-7
		12545H36010H000	03-7	13113H22502H000	09-3	13741H2C001H000	10-1-8
		12620H36010H000	06-1	13170H2C002H000	10-1-2	13750H2C000H000	10-5
		12623H3E020H000	06-2	13200H2C030H000	09-1	13766H2C001H000	10-9
11110H3E0C0H000	01-1	12651H36000H000	06-5	13225H11200H000	09-1-19	13781H2C001H000	10-1-6
11121H3E000H000	01-2	12651H3E000H000	05-14	13242H11240H000	09-1-9	13851H2C000H000	10-6
11123H3F000H000	01-4	12659H3C000H000	05-15	13245H11200H000	09-1-8	13863H22500H000	10-1-4
11141H3F000H000	01-10	12659H3C000H000	03-12	13247H11200H000	09-1-27	13878H2C000H000	10-1-5
11142H35000H000	08-6-2	12661H3D000H000	05-8	13247H33000H000	09-1-14	13891H2C000H000	10-1-9
11165H35010H000	01-11	12670H3E000H000	05-9	13251H11200H000	09-1-4	14036H2C060H000	11-1
11167H12000H000	01-7	12679H3E000H000	05-9-1	13251H11A10H000	09-1-11	14181H11200H000	11-3
11175H3F010H000	01-13	12681H36000H000	06-3	13252H33000H000	09-1-12	14413-25H00-000	11-6
11210H3E040H0B0	02-1	12683H36000H000	06-4	13253H33000H000	09-1-15	14414H2C000H000	11-7
11241H36000H000	02-5	12686-26H00-000	05-9-2	13254H21D00H000	09-1-22	14781H2C000H000	11-9

5

PART NO.	FIG. NO. – REF. NO.	PART NO.	FIG. NO. – REF. NO.	PART NO.	FIG. NO. – REF. NO.	PART NO.	FIG. NO. – REF. NO.
16052H3D000H000	05-20	21346H3E000H000	05-23	25241H3E010H000	16-3	30000	
16400H3D000H000	13-1	21410H3E050H000	14-2	25311H3E010H000	16-5		
16514H3D000H000	05-20-1	21411H3E000H000	14-2-7	25314H3E000H000	16-7		
16520H21D01H000	03-14	21413H3D000H000	14-2-3	25350H3E010H000	16-12		
16520H33000H000	05-20-2	21441H33020H000	14-2-5	25351H3E010H000	16-13		
16521H33000H000	05-20-2-2	21451H3E020H000	14-2-6	25381H3E020H000	16-8	31100H3F030H000	18-1
16531H33000H000	05-20-2-4	21462H3E000H000	14-2-4	25411H3E000H000	16-4	31133H22500H000	18-1-1-1
16532H33000H000	05-20-2-1	21471H35000H000	14-2-2	25500H3E030H000	16-15	31135H22500H000	18-1-1-2
16541H33001H000	03-15	21481H33000H000	14-3	25510H3E030H000	16-15-1	31153H22500H000	18-1-3
16542H36020H000	03-17	23121H3D000H000	14-7	25518H3E000H000	16-15-4	31156H22500H000	18-1-4
16551H33000H000	05-20-2-3	23131H3D000H000	14-6	25520H05520H000	16-17-5	31156H22510H000	18-1-5
16561H33000H000	05-21	23270H3D020H000	04-27	25525H2C000H000	16-17-3	31156H22520H000	18-1-7
16581H33000H000	14-5	23285H35000H000	04-30	25600H2C000H000	16-17	31175H3F010H000	18-1-1
18410H30210H000	12-10	24102H3E040H000	15-1	25610H2C000H000	16-17-1	31281H22500H000	18-1-6
18441H2A200H000	12-11	24103H3E061H000	15-5	25617H2A201H000	16-24	31800H73101H000	21-1
18442H21F00H000	12-13	24121H3D010H000	15-1-1	25652H16500H000	16-17-1-1	32100H2C010H000	19-1
18450H12E60H000	12-3	24122H3E000H000	15-1-11	26210H3E000H000	17-1	32101H2C000H000	19-1-1
18461H30201H000	12-7	24131H3D001H000	15-5-1	26211H3E000H000	17-1-4	32102H2C010H000	19-1-2
18463H2E002H000	12-8	24201H3E020H000	15-1-9	26221H35000H000	17-1-1	32111H33000H000	19-5
18565H2C000H000	36-11	24221H3E010H000	15-1-2	26222H35000H000	17-1-3	32113H35000H000	19-4
18566H2C000H000	36-12	24231H3E000H000	15-1-8	26225H35000H000	17-1-10	32115H35000H000	03-2
18610H2E000H000	12-5	24232H33000H000	15-1-6	26226H36000H000	17-1-8	32800H05523H000	21-4
18712H2C001H000	12-1	24232H33000H000	15-5-7	26241H35000H000	17-1-5	32900H2C010H000	21-6
		24241H3E010H000	15-1-7	26251H35000H000	17-1-7	33410H05570H000	21-8
		24251H3E010H000	15-1-4	26261H3E000H000	15-5-15	33510-04H10-000	21-8-1
20000		24311H3E000H000	15-5-11	26263H35000H000	15-5-13	33541H05500H000	21-8-2
		24314H35000H000	15-5-12	26300H2C000H000	17-5	33542H05500H000	21-8-3
		24321H3E000H000	15-5-3	26352-01000-000	17-5-1	33620H2C011H000	20-1
		24322H3E000H000	15-5-4	27511H36010H000	15-9	33652H22500H000	20-4
		24331H3E010H000	15-5-9	27521H33010H000	15-10	33652H22511H000	20-2-1
21111H3D010H000	05-25	24341H3E000H000	15-5-6	27600H3D000H118	15-12	33652H2C010H000	21-3
21112H3D010H000	05-26	24351H3E010H000	15-5-5	27620H3D000H000	15-12-1	33810H3F030H000	18-1-2
21114H3E000H000	05-27	24741H36000H000	03-11			33860H2C000H000	20-5
21200H3E001H000	14-1	25211H3E010H000	16-1			34100H2C003H000	22-1
21346H33000H000	14-4	25231H3E010H000	16-2			34111H2C003H000	22-1-2

PART NO.	FIG. NO. – REF. NO.	PART NO.	FIG. NO. – REF. NO.	PART NO.	FIG. NO. – REF. NO.	PART NO.	FIG. NO. – REF. NO.
34124H2C000H000	22-1-3	35950H2A000H000	41-2-4	42241-26H10-000	28-7	44018H2C0050HF07	30-3
34149-18G00-000	22-2	35970H2C001H000	25-5	42278-26H00-000	11-1-1	44018H2C0050HF08	30-3
34150H2C000H000	22-1-1	36610H2C003H000	26-1	42310-45F20-000	28-6	44018H2C0050HF09	30-3
34810H2C001H000	31-9	36618H2A000H000	26-10	42341-36H00-000	28-8	44151H2C000H000	32-7
34981-26H00-000	22-3	36651H2A100H000	26-8	43031H2C000H000	48-1	44200H2C100H000	30-5
34990H2A410H000	22-7	36720H2C100H000	26-1-1	43110H2C001H000	28-10	44256H22500H000	30-2-3
34997H22500H000	22-6	36990H2J000H000	26-7	43115H36600H000	28-13	44256H22500H000	30-3-3
35100H2C002H000	23-1	37011H2A0C0H000	26-16	43116H22500H000	28-15	44267H2C000H000	30-8
35121H2C001H000	23-1-1	37100H2A002H000	26-11	43125H2A203H000	28-19	44271H2C002H000	30-2-1
35151-21J00-000	25-4	37146H30120H000	26-18	43130H22500H000	42-13	44281-04HA0-000	34-11
35151-21J00-000	37-3	37200H2A001H000	35-1	43130H22500H000	48-9	44281-12FH0-000	30-18
35151-21J00-000	37-10	37400H2A002H000	35-2	43142H21302H000	28-11	44281H2C000H000	30-3-1
35155-48H00-000	23-4	37571H05503H000	35-2-1	43152H22500H000	28-17	44300H2C000H000	31-1
35157H22501H000	10-4	37720H3E001H000	16-20	43159-45F00-000	28-22	44352H2C000H000	31-7
35171H2C001H000	23-1-5	37740H2G100H000	26-13	43501H2C000H000	29-1	44366-45FA0-000	31-6
35174H2A110H000	23-1-2	38500H2C000H000	26-14	43502H2C000H000	29-2	44421H2C000H000	31-2
35382-48H00-000	23-5	38610-04H02-000	24-8	43551H2A200H000	29-1-1	44423H2C000H000	30-15
35601H2C000H000	24-1	38840H2A013H000	26-17	43551H2A200H000	29-2-1	44424H2C000H000	30-17
35602H2C000H000	24-2			43600H2C000H000	29-4	44542-36H10-000	30-22
35603H2C000H000	24-5			43612H2A200H000	29-4-1	44542-38300-000	30-19
35604H2C000H000	24-6			43612H2A200H000	29-5-1	45100H2C001H000	39-1
35610H2C000H000	24-1-1			43631H52100H000	29-6	45130H2C000H000	39-1-7
35610H2C000H000	24-6-1	40000		43700H2C000H000	29-5	45147-12FB0-000	39-2-2
35616H11A01H000	24-4			44011H2C030HF02	30-1	45148-20G00-000	39-2-3
35616H2C000H000	24-7			44011H2C030HF04	30-1	45148-33G00-000	39-1-2
35630H2C000H000	24-2-1	41051H2C001H000	20-2	44011H2C030HF07	30-1	45149-21200-000	39-1-3
35630H2C000H000	24-5-1	41100H2CY61H000	27-1	44011H2C030HF08	30-1	45149H36300H000	39-1-4
35710H2C000H000	25-1	41855H2C000H000	28-20	44011H2C030HF09	30-1	45160H2C000H000	39-1-1
35718H2C000H000	25-1-3	41894H21320HN00	21-11	44017H2C090HF02	30-2	45160H2C011H000	39-2-1
35720H2C000H000	25-1-1	41940H2C010H000	27-6	44017H2C090HF04	30-2	45280H2C000H000	39-3
35764H2C000H000	23-1-6	41950H2C010H000	27-7	44017H2C090HF07	30-2	45300H2C002H000	39-2
35910H2C003H000	25-3	41970H2C000H000	27-2	44017H2C090HF08	30-2	45511H2C000H511	40-3
35915H7E002H000	25-3-1	41980H2C000H000	27-3	44017H2C090HF09	30-2	45512H2C000H511	40-11
35918H2C000H000	25-3-3	42100H2C000H000	28-1	44018H2C050HF02	30-3	45513H2C000H511	40-1
35950H2A000H000	41-1-4	42211H2A200H000	28-2	44018H2C050HF04	30-3	45541H2C001H105	40-12

5

PART NO.	FIG. NO. – REF. NO.	PART NO.	FIG. NO. – REF. NO.	PART NO.	FIG. NO. – REF. NO.	PART NO.	FIG. NO. – REF. NO.
45541H2C001H412	40-12	51153-45F40-000	41-1-1	54400H17Y00H000	48-20	58300H2C000H000	34-8
45541H2C001H501	40-12	51153-45F40-000	41-2-1	54441H45F11H000	48-21	58410H2C000H000	34-9
45541H2C001H623	40-12	51156-45F40-000	41-1-2	54711-05310-000	42-4	59064H2A032H000	44-1
45541H2C001H901	40-12	51156-45F40-000	41-2-2	54731H2A000H000	42-3	59121-05530-000	43-1-3
45542H2C001H105	40-13	51173H2A000H000	41-1-3	54741H2A000H000	42-5	59211H2C000H504	42-10
45542H2C001H412	40-13	51173H2A000H000	41-2-3	54742-45F00-000	42-7	59246H2C001H000	45-4
45542H2C001H501	40-13	51189H2C000H000	41-1-5	54751H2A000H000	42-9	59268H2D010H000	45-5
45542H2C001H623	40-13	51189H2C000H000	41-2-5	54892-45F00-000	42-6	59268H2G110H000	45-7
45542H2C001H901	40-13	51310H2C000H000	41-3	55100H25300H000	42-12	59300H2C001H105	43-1
45700-09GA0-000	39-8	51352H2C001H000	41-4	55156-66310-000	43-1-2	59300H2CY01H000	43-1-1
46211H2C000H506	49-1	51410H2A521H000	41-6	55421-45F10-000	48-20-1	59421H45HA0H000	42-11
46231H2C000H506	49-2	51520H2C000H000	41-14	56111H2C000H000	34-1	59480H2C020H000	45-3
46356H2A200H000	49-3	51589H22500H000	41-14-2	56171H2C001H000	34-2	59600H2A032H000	44-1-1
47111H2C001H000	32-1	51610H2A200H000	41-20	56211-45F10-000	41-8	59660H7FY00H000	44-1-1-7
47112H2C000H838	32-2	51611H2A201H000	27-1-1	56221-45F10-000	41-9	59666-44300-000	44-1-1-7-1
47115H2C000H000	32-12	51611H2A201H000	41-15	56270H2C000H000	34-4	59667-053B0-000	44-1-1-1
47121H2C000H838	32-3	51612H2A200H000	27-1-2	56500H2A260H000	34-5	59668H2G120H000	44-1-1-2
47211H2C000H000	32-4	51612H2A200H000	41-16	56600H2A260H000	34-6	59669H2A010H000	44-1-1-3
47212H2C000H838	32-5	51620H2A200H000	41-21	57110-28G10-000	35-3	59671H2C100H000	44-1-1-5
47221H2C000H838	32-6	51621H2A200H000	41-17	57211-45FB0-000	35-4	59675H2A000H000	44-1-1-6
47312H02100H000	30-13	51622H2A200H000	41-7	57321-45F20-000	44-1-3	59689H2G120H000	44-1-1-4
47312H02100H000	32-9	51631-48H00-000	41-18	57421H45F10H000	44-1-2		
47321H2C000H511	40-14	51643H2A200H000	41-19	57431-45C01-000	35-5-5		
47435-45FA0-000	36-10	51644-45FA0-000	41-12	57433-09F00-000	44-1-4		
		51827H2A101H000	41-14-1	57441-053B0-000	35-5-3		
50000		51831H2C000H511	37-8	57442-053B0-000	35-5-4	60000	
		51841H2C000H511	37-9	57460-17C11-000	44-1-5		
		51881H2C001H000	41-13	57500H053E0H000	35-5		
		53111H2C000HA34	33-1	57511-053B0-000	35-5-2		
		53111H2C000HA36	33-1	57512-45F00-000	35-5-9		
51082H2C00AHF01	37-4	53111H2C000HA42	33-1	57518H2C100H000	35-5-6	61019H2C002H000	46-1
51103H2C000H518	41-1	53111H2C000HA94	33-1	57560-28G11-000	35-5-7	61041H2C000H000	48-7
51104H2C000H518	41-2	53111H2C000HA96	33-1	57621H053C0H000	35-5-1	61211H2A200H000	46-6
51117-45F40-000	41-1-6	54111H2C001HA98	42-1	57661-05300-000	35-6	61251-05300-000	46-8
51117-45F40-000	41-2-6	54111H2C001HA99	42-1	58200H2C000H000	34-7	61261-05341-000	46-1-1

PART NO.	FIG. NO. – REF. NO.	PART NO.	FIG. NO. – REF. NO.
61262-05300-000	46-9	68170H79001HSIL	37-4-1
61273H2C010H000	46-7	68171H2C000HR01	40-16
61280H2A410H000	46-3	68171H2C000HSH5	40-16
61311H2C000H000	47-6	68171H2C000HSH7	40-16
61315-45F00-000	47-9	68171H2C000HSH8	40-16
61421H2C000H000	48-7-1	68171H2C000HUG6	40-16
62100H2C000H105	47-1	68311H56110H000	27-9
62145H45F00H000	47-2	68319H22510H000	38-1
62478H22500H000	30-4	68332H12911H000	38-3
63111H2C003H000	36-1		
63121H2C000H000	46-18	90000	
63151H2C000H000	36-6		
64150H2C002HA98	48-10		
64150H2C002HA99	48-10		
64210H2E020H000	48-22		
64310-26H00-000	46-13	92125-33GC0-000	30-2-2
64321-29J00-000	46-12	92125-33GC0-000	30-3-2
64451H21710H000	48-23	92125-33GC0-000	36-13
64511H2C100H000	48-32	93162-37G00-000	36-5
64610H22500H000	48-28	94414H2C000H105	37-1
64651H2C000H000	48-14	94414H2C000H412	37-1
64711H2C000H000	48-16	94414H2C000H501	37-1
64712H2C010H000	48-8	94414H2C000H623	37-1
64731-45F00-000	48-13	94414H2C000H901	37-1
64733-05301-000	48-29	94417H2C000H827	37-6
64741H2C000H000	48-18	94424H2C000H105	37-2
64751H41100H000	48-19	94424H2C000H412	37-2
65100H25300H000	48-15	94424H2C000H501	37-2
68113H2C000H000	30-10	94424H2C000H623	37-2
68123H2C000H000	30-11	94424H2C000H901	37-2
68161H2C000HR01	40-15	94427H2C000H827	37-7
68161H2C000HSH5	40-15	95700H52110H000	39-4
68161H2C000HSH7	40-15	95711H52110H000	39-5
68161H2C000HSH8	40-15	95721H52110H000	39-6
68161H2C000HUG6	40-15	99011H2C051H000	38-2

Haojue KA150 PARTS CATALOGUE

1st Edition

Published in 2023.6

DACHANGJIANG GROUP CO.,LTD.

No.5, Jiandabei Rd., Jiangmen City, Guangdong Province, P.R.China

Tel: 86-750-3288999 Fax: 86-750-3230989 Code: 529000

DACHANGJIANG GROUP COPYRIGHT POSSESSION.

DACHANGJIANG GROUP CO. , LTD.