

Haojue

PARTS CATALOGUE

NK150

PREFACE

This catalogue lists the spare parts used for the following model. Please do refer to the parts catalogue and indicate the parts number and the name listed in this catalogue correctly when you need to replace the spare parts.

Design Code	Factory Reference No. (Abbr. form in the catalogue)	Engine Reference No.	Engine Cad No.
NK150	FA403JC120-XXE61	EG3JC09-E61	10091H3J010H000

一、 How to place an order for spare parts?

1. Required document:

The number must be provided as follow when order the spare parts:

- (a) The Engine parts: parts number and the Engine number
- (b) The Body parts: parts number and the Frame number

2. Revision

The Revised Version would be published at a suitable time when the parts Catalogue needed to be revised or renewed. In this case, the edition number would be marked on the cover. The parts would have some difference because our products are improved continuously and the modified parts no. will not be informed before the new edition published.

二、 How to use the parts catalogue?

1. Size

The unit of the parts' size indicated in the catalogue is 'mm', for example:

Parts name	Description
Bolt 6×12	Diameter 6mm, Length 12mm

O Ring D: 3.0, ID: 29.5	Section diameter 3mm, inner diameter 29.5mm
Bearing 35×72×17	Inner diameter 35mm, Outer diameter 72mm, Thickness 17mm

2. Abbr.

The meaning of the Abbreviations in the catalogue are as the followings:

D: Section diameter NT: Number of Teeth L: Length ID: Inner diameter W: Width

OPT: Optional T: Thickness OD: Outer diameter OS: Over size

STD: Standard US: Under size LH: Left hand side RH: Right hand side

3. Assy and the inner parts

The part number with a hyphen '-' in the front means this part could be supplied with the Assy (or the comp.), also could be supplied separately.

For example:

Item 1 CYLINDER HEAD ASSY

Item1-1 PIN,CAMSHAFT COVER

That means Item1-1 can be supplied with Item 1 and aslo can be supplied separately.

4. The illustrations in the catalogue are just for the purpose to distinguish the parts. There might be some discrepancies between the illustrations and the real parts.. Furthermore, the illustrations can not be used for the assembling purpose. When assembling, pls use the Service Manual of the relative models.

5. The instruction for the color parts

The catalogue lists are being supervised by color code.

For example: Assy,Fuel Tank 44100H22000HF01 F01 is the colour code and means "RED".

When place an order for the color parts, please use the correct parts number (with the color code), based on the compound color sheet of the models.

This catalogue is edited according to the datas before 2020-12-31. The modification after that time should refer to the latest SPS(Spare Parts Modification notice).

NK150 COLOR TABLE FA403JC120–XXE61 3 COLOR STYLES

REF. NO.	DESCRIPTION	PART NO.	a01 RED	a02 BLACK	a03 WHITE	REMARKS
1	CARRIER COMP, REAR	46310H40101H000	841	841	841	
2	CARRIER, REAR	46311H40100H000	841	841	841	NOT SUPPLY
3	COVER, SEAT TAIL, R	45511H40100H000	135	521	913	
4	COVER, SEAT TAIL, L	45512H40100H000	135	521	913	
5	COVER SET, FRAME, L	47021H40100H000	F01	F02	F03	
6	COVER, FRAME, L	47211H40100H000	521	521	521	NOT SUPPLY
7	TAPE, FRAME COVER, L	68142H40120H000	T87	T88	T89	
8	COVER SET, FRAME, R	47011H4010AH000	F01	F02	F03	
9	COVER, FRAME, R	47111H40100H000	521	521	521	NOT SUPPLY
10	TAPE, FRAME COVER, R	68132H40120H000	T87	T88	T89	
11	FUEL TANK SET	44011H40000H000	F04	F05	F06	
12	TAPE SET, FUEL TANK	68110H40120H000	T87	T88	T89	NOT SUPPLY
13	LID SET, FRAME COVER, L	47022H40100H000	F01	F02	F03	
14	LID, FRAME COVER, L	47212H40100H000	135	521	913	NOT SUPPLY

NK150 COLOR TABLE FA403JC120-XXE61 3 COLOR STYLES

REF. NO.	DESCRIPTION	PART NO.	a01 RED	a02 BLACK	a03 WHITE	REMARKS
15	TAPE, TAIL COVER, L	68167H40120H000	T87	T88	T89	
16	LID SET, FRAME COVER, R	47012H40100H000	F01	F02	F03	
17	LID, FRAME COVER, R	47112H40100H000	135	521	913	NOT SUPPLY
18	TAPE, TAIL COVER, R	68165H40120H000	T87	T88	T89	
19	PANEL, COWLING	94414H40100H000	521	521	521	
20	EMBLEM, LOGO	68170H40110H000	T87	T87	T87	
21	FENDER, FRONT	53111H40100H000	135	521	913	
22	COVER SET, FUEL TANK, R	44017H4010GH000	F01	F02	F03	
23	COVER, FUEL TANK, R	44171H40100H000	521	521	521	NOT SUPPLY
24	TAPE, FUEL TANK RIGHT COVER, NO. 1	68225H40120H000	T87	T88	T89	
25	TAPE, FUEL TANK RIGHT COVER, NO. 2	68125H40130H000	T87	T87	T89	
26	COVER SET, FUEL TANK, L	44018H4010GH000	F01	F02	F03	
27	COVER, FUEL TANK, L	44181H40100H000	521	521	521	NOT SUPPLY

NK150 COLOR TABLE FA403JC120-XXE61 3 COLOR STYLES

REF. NO.	DESCRIPTION	PART NO.	a01 RED	a02 BLACK	a03 WHITE	REMARKS
28	TAPE, FUEL TANK LEFT COVER, NO. 1	68226H40120H000	T87	T88	T89	
29	TAPE, FUEL TANK LEFT COVER, NO. 2	68126H40130H000	T87	T87	T89	

INFORMATION ILLUSTRATION INDEX

1

ENGINE & TRANSMISSION

2

ELECTRICAL

3

BODY

4

PARTS NUMBER INDEX

5

Fig. 1 CYLINDER HEAD&CYLINDER HEAD COVER (P12-S010-0005)

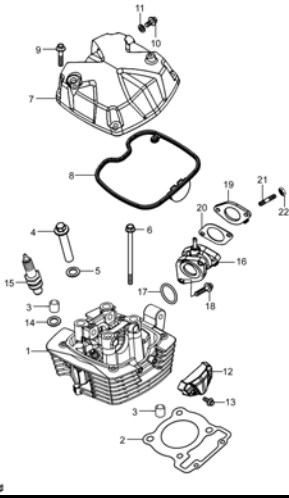


Fig. 2 CYLINDER (P12-S020-0005)

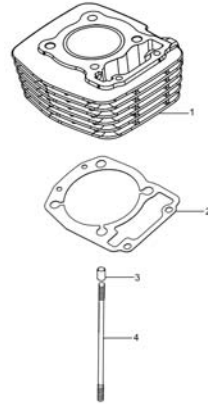


Fig. 3 CRANKCASE (P12-S030-0008)

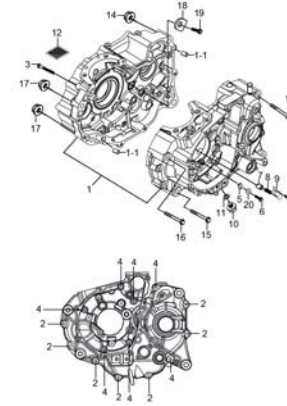


Fig. 4 CRANKCASE COVER (P12-S040-0008)

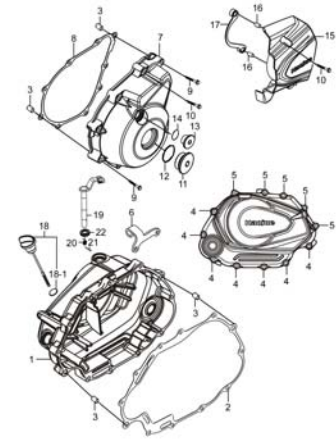


Fig. 5 CRANKSHAFT (P12-S050-0005)

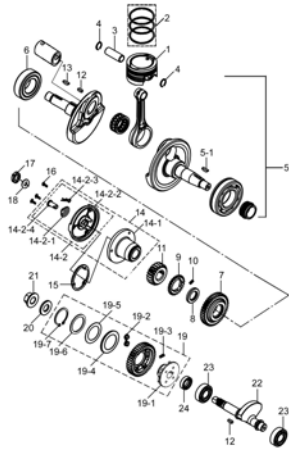


Fig. 6 STARTER CLUTCH (P12-S060-0001)

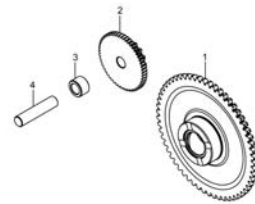


Fig. 7 CAMSHAFT-VALVE (P12-S070-0005)

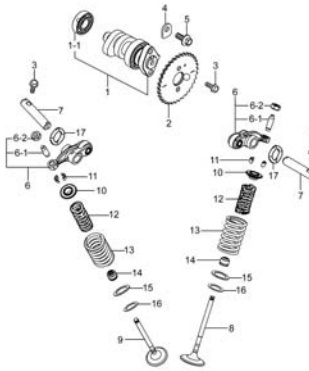
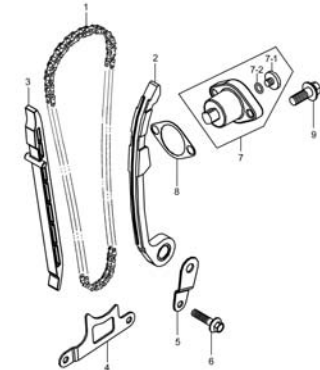


Fig. 8 CAM CHAIN (P12-S080-0002)



1

Fig. 9 CARBURETOR (P12-S090-0004)

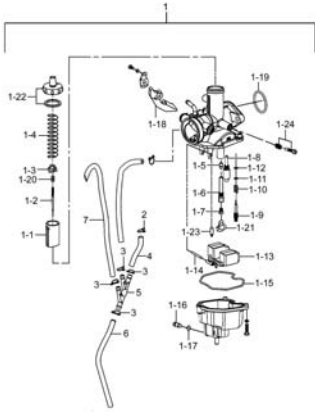


Fig. 10 AIR CLEANER (P12-S100-0005)

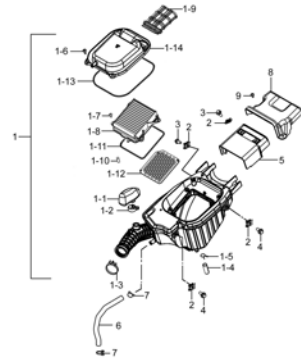


Fig. 11 MUFFLER (P12-S110-0008)

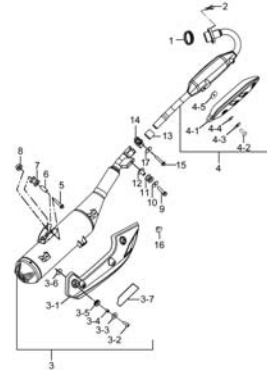


Fig. 12 2ND AIR VALVE (P12-S120-0002)

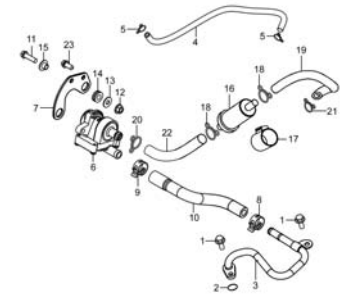


Fig. 13 OIL PUMP (P12-S130-0003)

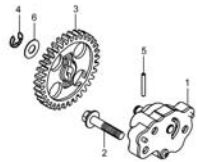


Fig. 14 CLUTCH (P12-S140-0004)

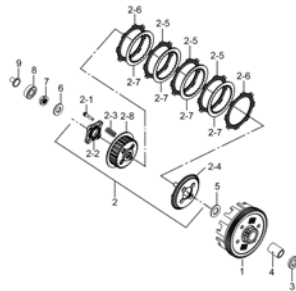


Fig. 15 TRANSMISSION (P12-S150-0005)

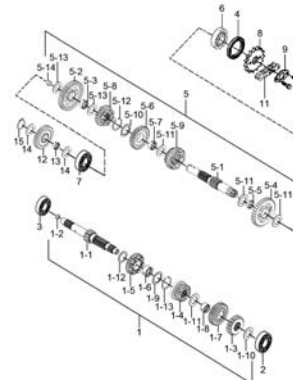


Fig. 16 GEAR SHIFTING (P12-S160-0003)

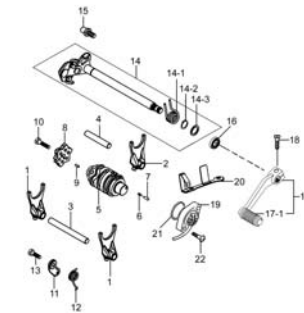


Fig. 17 KICK STARTER (P12-S165-0002)

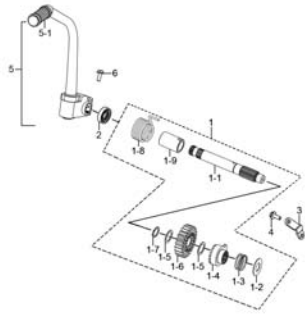


Fig. 18 STARTING MOTOR (P12-S170-0003)

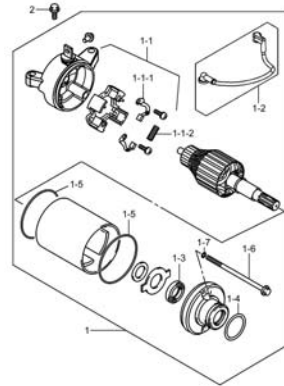


Fig. 19 MAGNETO (P12-S180-0002)

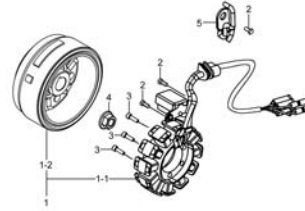


Fig. 20 BATTERY (P12-S190-0005)

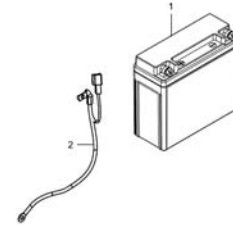


Fig. 21 ELECTRICAL (P12-S200-0005)

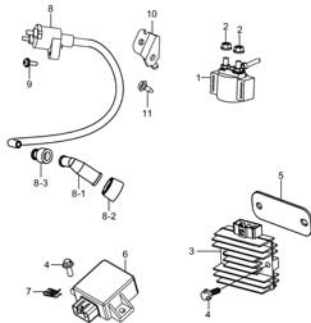


Fig. 22 SPEEDOMETER (P12-S210-0005)

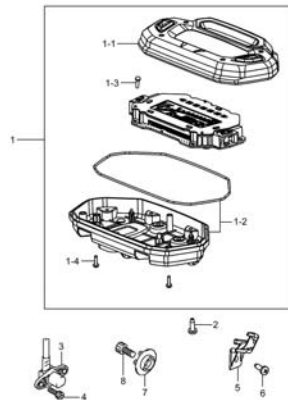


Fig. 23 HEADLAMP (P12-S220-0003)

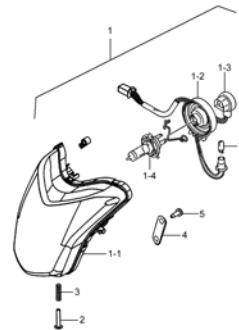


Fig. 24 TURN SIGNAL LAMP (P12-S230-0003)

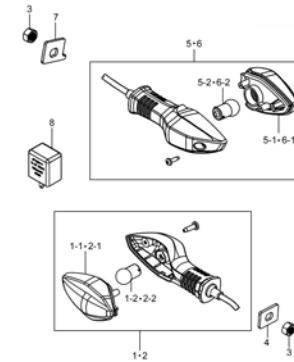


Fig. 25 REAR COMBINATION LAMP
(P12-S240-0008)

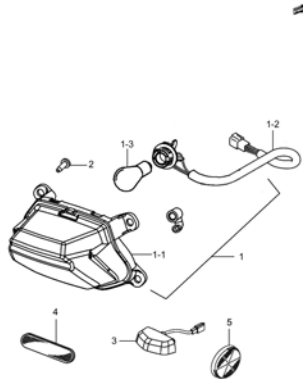


Fig. 26 WIRING HARNESS (P12-S250-0010)

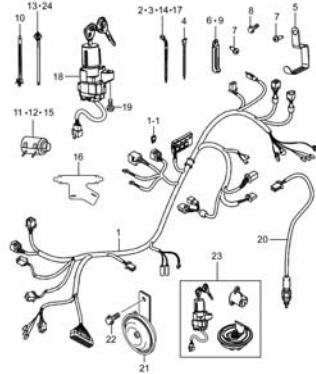


Fig. 27 FRAME (P12-S260-0006)

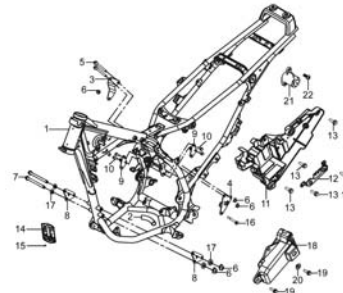


Fig. 28 STAND (P12-S270-0003)

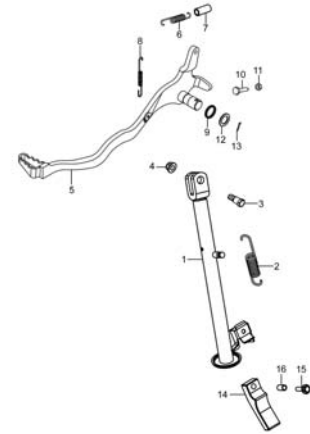


Fig. 29 FOOTREST (P12-S280-0005)

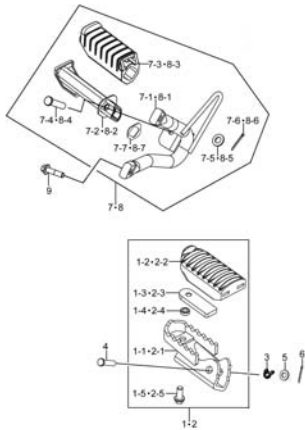


Fig. 30 FUEL TANK (P12-S290-0010)

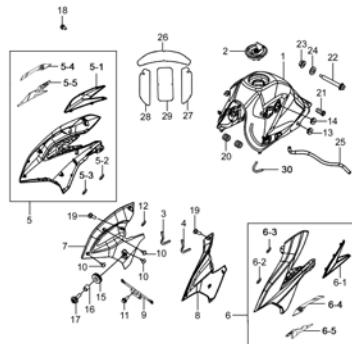


Fig. 31 FUEL COCK (P12-S300-0002)

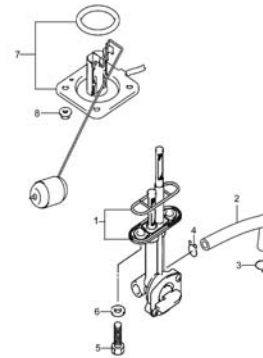


Fig. 32 FRAME COVER (P12-S310-0010)

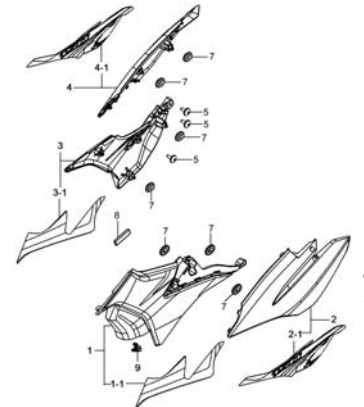


Fig. 33 FRONT FENDER (P12-S320-0002)

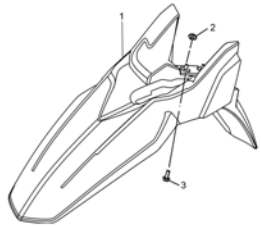


Fig. 34 HANDLEBAR (P12-S330-0006)

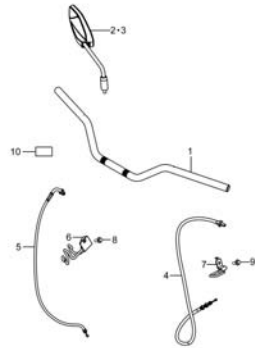


Fig. 35 HANDLE SWITCH (P12-S340-0008)

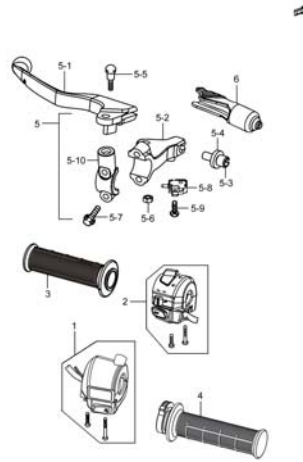


Fig. 36 REAR FENDER (P12-S350-0005)

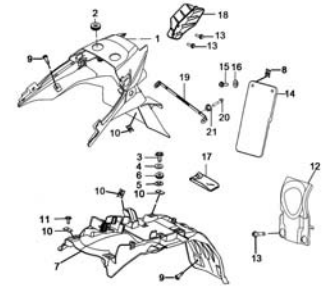


Fig. 37 COWLING (P12-S360-0003)

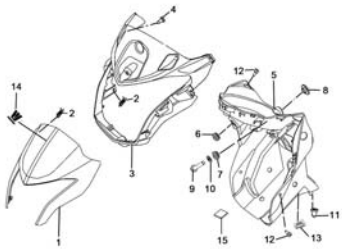


Fig. 38 LABEL (P12-S370-0011)

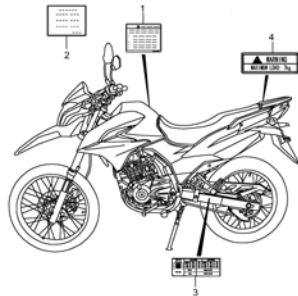


Fig. 39 SEAT (P12-S380-0003)

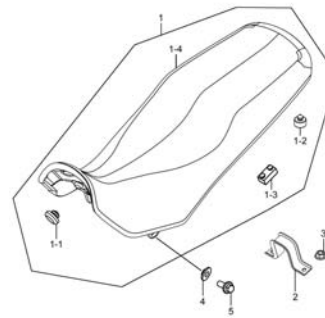


Fig. 40 COVER, SEAT TAIL (P12-S390-0003)

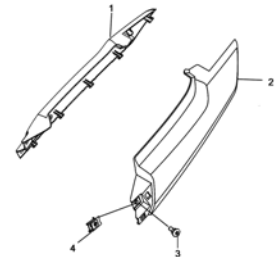


Fig. 41 STEERING STEM (P12-S400-0005)

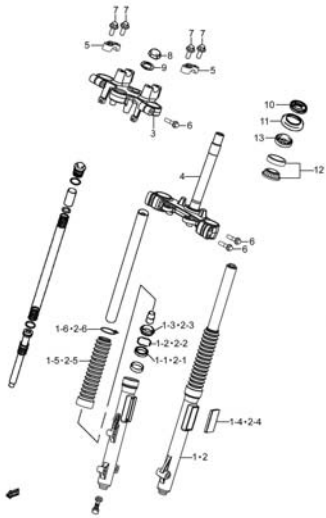


Fig. 42 FRONT WHEEL (P12-S410-0003)

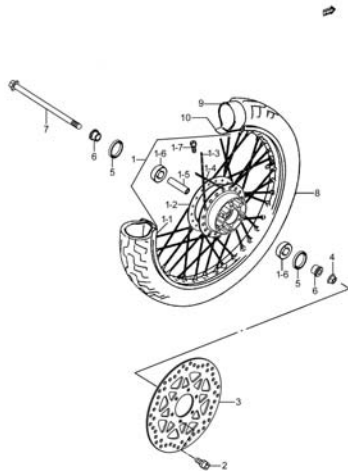


Fig. 43 FRONT CALIPER (P12-S420-0003)

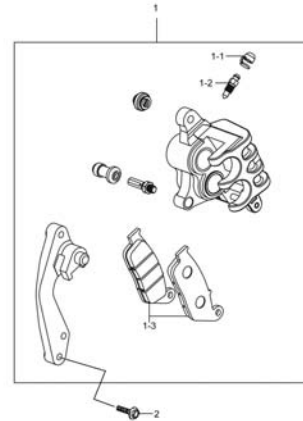


Fig. 44 FRONT BRAKE CYLINDER (P12-S430-0005)

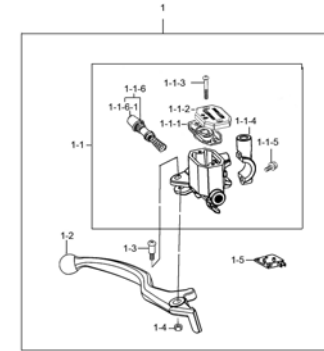


Fig. 45 HOSE, FRONT BRAKE (P12-S435-0005)



Fig. 46 REAR SWINGING ARM (P12-S440-0003)

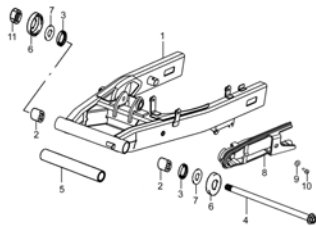


Fig. 47 REARSHOCK ABSORBER (P12-S450-0005)

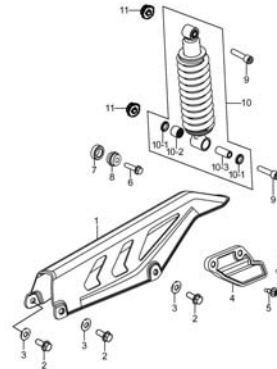


Fig. 48 REAR WHEEL (P12-S460-0004)

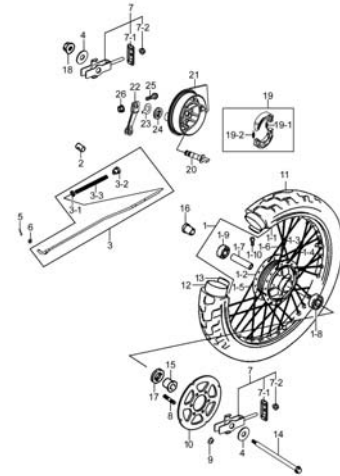


Fig. 49 CARRIER (P12-S480-0004)



1

Fig.1

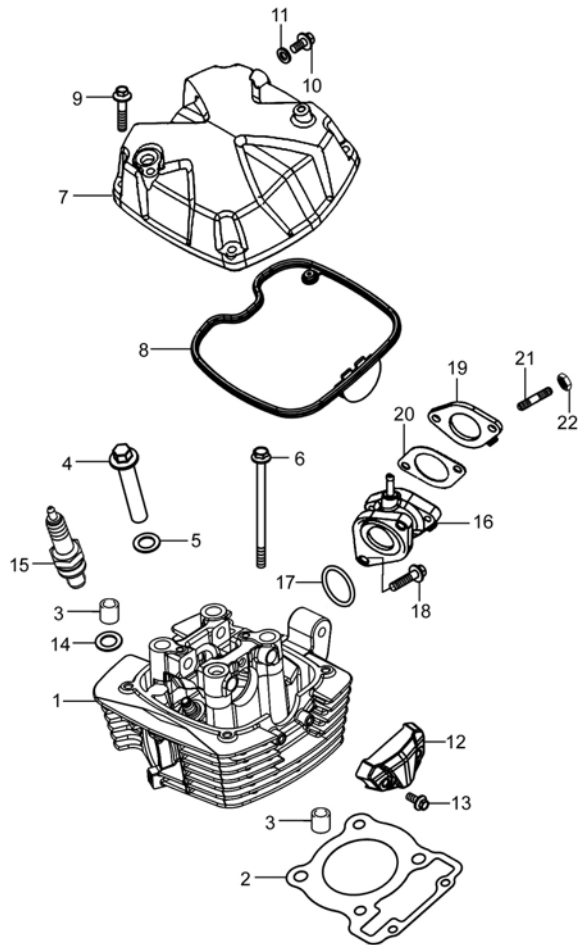


Fig.1 CYLINDER HEAD&CYLINDER HEAD COVER (P12-S010-0005)

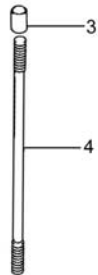
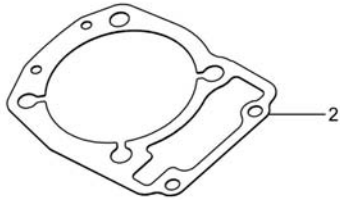
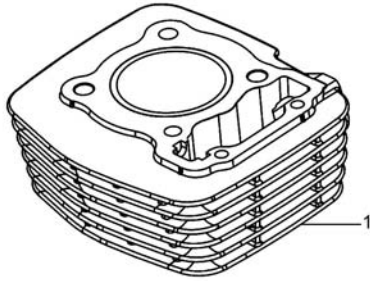
REF. No.	PART No.	DESCRIPTION	Q'TY	REMARKS
1	11110H3J0H0H000	HEAD COMP, CYLINDER	1	
2	11141H3J010H000	GASKET, CYLINDER HEAD	1	
3	09206H10006H000	PIN	3	
4	11151H3J010H000	NUT, CYLINDER HEAD	4	
5	09160H12016H000	WASHER, PLAIN	4	
6	09103H06003H000	BOLT	2	
7	11171H2J021H000	COVER, CYLINDER HEAD	1	
8	11173H3J011H000	GASKET, CYL HEAD COVER	1	
9	01547-0630A-000	BOLT	4	
10	01547-0612A-000	HEXAGON BOLT WITH FLANGE	1	
11	09168-06018-000	GASKET	1	
12	11121H3J020H000	COVER, CYLINDER HEAD, L	1	
13	01547-0512A-000	BOLTS, HEXAGON HEAD FLANGE	2	
14	11184H3J000H000	WASHER	1	
15	09482H00010H000	PLUG, SPARK	1	CPR8EA
16	13110H40000H000	PIPE COMP, INTAKE	1	
17	09280H34002H000	O-RING	1	
18	01547-0620A-000	BOLT	2	
19	13112H3J010H000	PLATE, CARB HEAT GUARD	1	
20	13113H3E001H000	GASKET, CARB HEAT GUARD PL	1	
21	09108H06009H000	STUD BOLT	2	
22	08310-0006A-000	NUT	2	

2

Fig. 2

Fig.2 CYLINDER (P12-S020-0005)

REF. No.	PART No.	DESCRIPTION	Q' TY	REMARKS
1	11210H3JOB0H0A0	CYLINDER COMP	1	
2	11241H3J010H000	GASKET, CYLINDER	1	
3	09206H10007H000	PIN, KNOCK	2	
4	09108H08021H000	BOLT, STUD	4	



2



Fig. 3

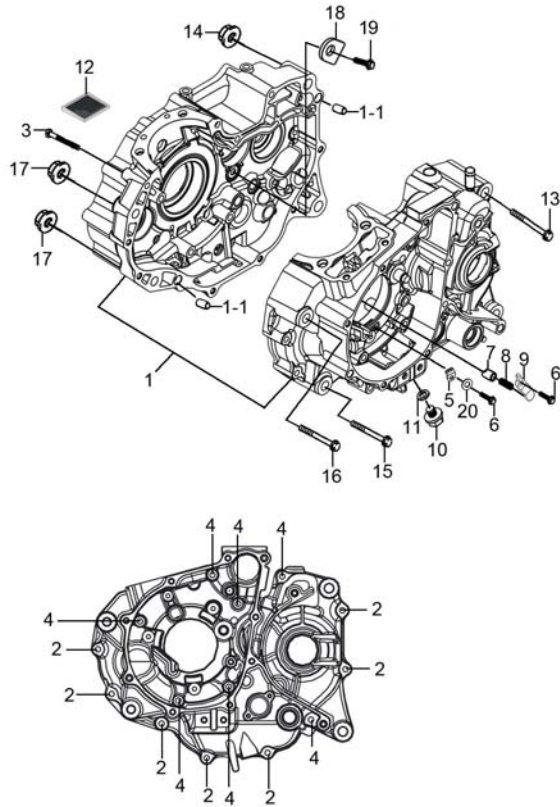


Fig.3 CRANKCASE (P12-S030-0008)

REF. No.	PART No.	DESCRIPTION	Q'TY	REMARKS
1	11300H3JY12H000	CRANKCASE SET	1	
1-1	09206H10007H000	PIN, KNOCK	2	
2	01547-0640A-000	BOLTS, HEXAGON HEAD FLANGE	7	
3	01547-0645A-000	BOLT	1	
4	01547-0670A-000	BOLTS, HEXAGON HEAD FLANGE	7	
5	12547H3J000H000	RETA INER, CSHAFT BRG, L	3	
6	01547-0616A-000	BOLT	4	
7	12543H3J000H000	PIN, BRG PUSH	1	
8	12544H3J000H000	SPRING, BRG PUSH	1	
9	12545H3J010H000	PLATE, BRG PUSH PIN SPRING	1	
10	09247H12105H000	PLUG	1	
11	09168-12002-000	GASKET, TDC PLUG	1	
12	16520-09410-000	STRAINER COMP, ENGINE OIL	1	
13	09103H10003H000	BOLT, HEXAGON	2	
14	08319-3110A-000	NUT	2	
15	09103-08530-000	BOLT	1	
16	09103H08010H000	BOLT, HEXAGON	1	
17	08319-3108A-000	NUT	2	
18	24741H3J000H000	RETA INER, CNTR SHAFT BEARING	2	
19	01550-0616A-000	BOLT	2	
20	08211-06141-000	WASHER, GEAR SHIFT CAM STOPPER	3	

2



Fig. 4

2

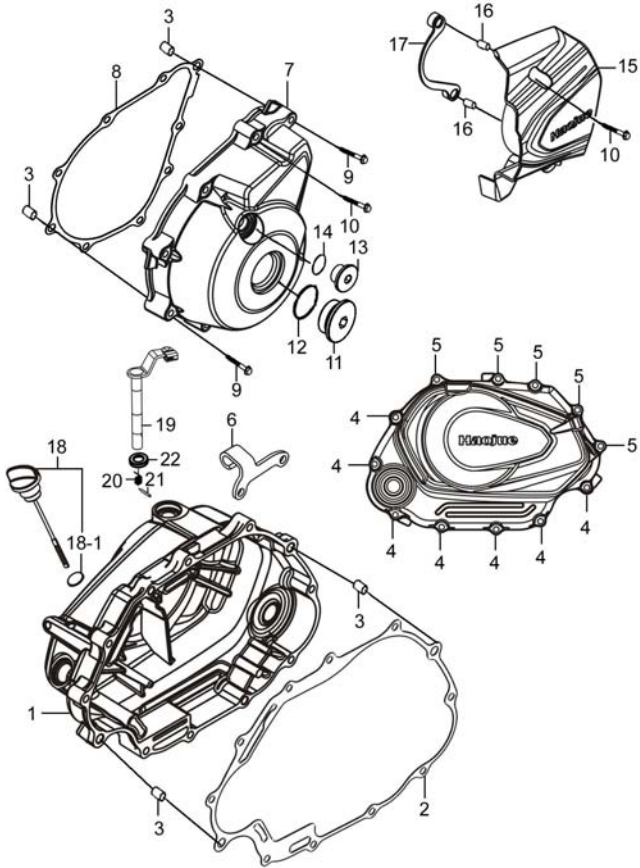


Fig.4 CRANKCASE COVER (P12-S040-0008)

REF. No.	PART No.	DESCRIPTION	Q' TY	REMARKS
1	11340H3J020H000	COVER COMP, CLUTCH	1	
2	11482H3J010H000	GASKET, CLUTCH COVER	1	
3	09206H08004H000	PIN, KNOCK	4	
4	01547-0640A-000	BOLTS, HEXAGON HEAD FLANGE	7	
5	01547-0630A-000	BOLT	5	
6	11421H3R000H000	BRACKET, CLUTCH CABLE	1	
7	11351H3J010H000	COVER, MAGNETO	1	
8	11483H3J010H000	GASKET, MAGNETO COVER	1	
9	01547-0645A-000	BOLT	2	
10	01547-0635A-000	BOLT	9	
11	09259H32002H000	PLUG	1	
12	09280-32006-000	O-RING, INTAKE PIPE	1	
13	11353H3J010H000	PLUG, TIMING OBSERVATION HOLE	1	
14	09280H13010H000	O-RING	1	
15	11361H3J010H000	COVER, ENG SPROCKET	1	
16	09206H08002H000	PIN, KNOCK	2	
17	11362H3J010H000	PLATE, CHAIN	1	
18	11091H3J010H000	GAUGE SET, OIL LEVEL	1	
18-1	09280H18002H000	O RING	1	
19	23270H3J010H000	SHAFT COMP, CLUTCH RELEASE	1	
20	09448H15001H000	SPRING, TORSION	1	
21	09205H03001H000	PIN, SPRING	1	
22	23285H35010H000	SEAL, OIL	1	

Fig. 5

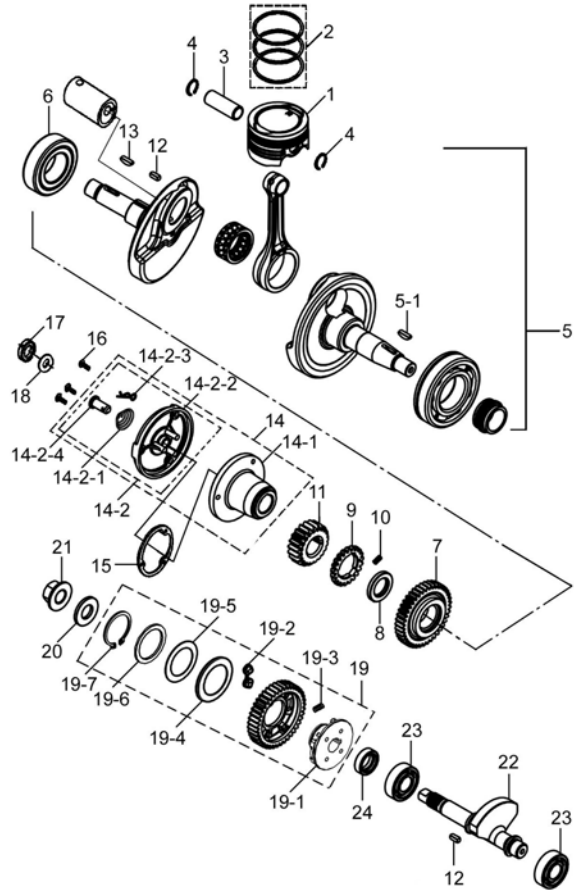


Fig.5 CRANKSHAFT (P12-S050-0005)

REF. No.	PART No.	DESCRIPTION	Q'TY	REMARKS
1	12111H3J000H0A0	PISTON	1	
2	12140H3E010H000	RING SET, PISTON	1	
3	12151H3J000H000	PIN, PISTON	1	
4	09381-14001-000	CIRCLIP	2	
5	12200H3J002H000	CRANKSHAFT ASSY	1	
5-1	09420H04002H000	KEY	1	
6	09264H30001H000	BEARING, ROLLER	1	
7	12661H3J001H000	GEAR, CRANK BALANCER DRIVE	1	
8	21113H3J000H000	WASHER, PRIMARY DRIVE GEAR	1	
9	21112H3J000H000	GEAR, PRIMARY DRIVE NO. 2	1	
10	21114H3J010H000	SPRING, PRIMARY DRIVE GEAR	3	
11	21111H3J020H000	GEAR, PRIMARY DRIVE	1	
12	09421H04001H000	KEY	2	
13	09420H04005H000	KEY, WOODRUFF	1	
14	16052H3D010H000	FILTER SET, ENGINE OIL	1	
14-1	16514H3D000H000	FILTER ROTOR, ENG OIL	1	
14-2	16520H33040H000	COVER ASSY, ENGINE OIL FILTER	1	
14-2-1	16532H33040H000	SPRING, OIL PASSING TUBE	1	
14-2-2	16521H33040H000	COVER, ENGINE OIL FILTER	1	
14-2-3	16551H33040H000	PIN, COTTER	1	
14-2-4	16531H33040H000	TUBE, OIL PASSING	1	
15	16561H3E000H000	GASKET, ROTOR COVER	1	
16	02122-0512A-000	CROSS RECESSED HEAD SCREW	3	
17	21346H33000H000	NUT, LOCK	1	
18	09160H16004H000	WASHER, PLAIN	1	
19	12670H3J000H000	GEAR COMP, CRANK BAL DRIVEN	1	
19-1	12679H3J000H000	RACE, CRK BAL DRIVEN GEAR	1	
19-2	12686H3J000H000	DAMPER, CRANK BALANCER GEAR	2	
19-3	09440H07004H000	SPRING, COMPRESSION	2	

2

Fig. 5

2

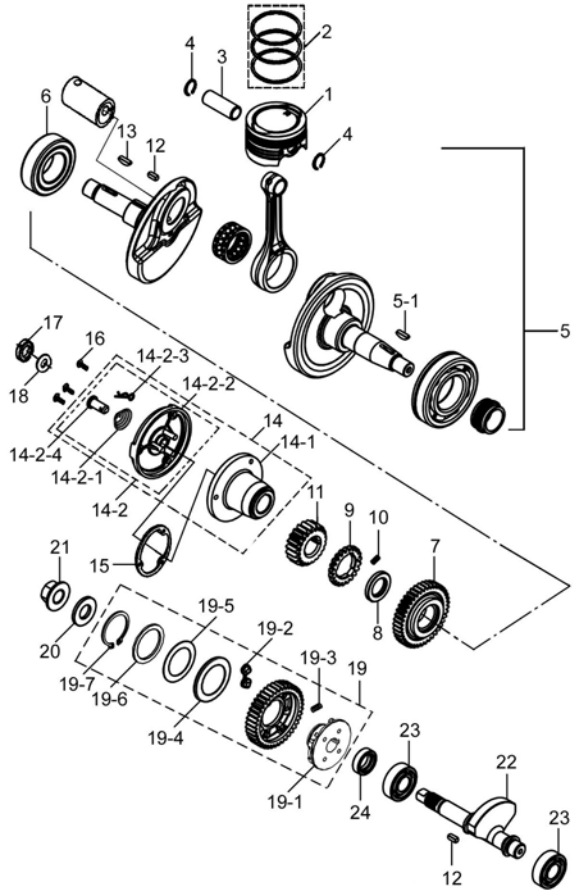


Fig.5 CRANKSHAFT (P12-S050-0005)

REF. No.	PART No.	DESCRIPTION	Q' TY	REMARKS
19-4	09181H28001H000	WASHER, THRUST	1	
19-5	12687H3J000H000	DISC SPRING	1	
19-6	09181H28004H000	WASHER	1	
19-7	08331-31289-000	CIRCLIP	1	
20	21324H3J000H000	WASHER	1	
21	09159H14001H000	NUT, WITH FLANGE	1	
22	12651H3J020H000	BALANCER, CRANK	1	
23	09262H15018H000	BEARING	2	
24	09180H15019H000	SPACER	1	

Fig. 6

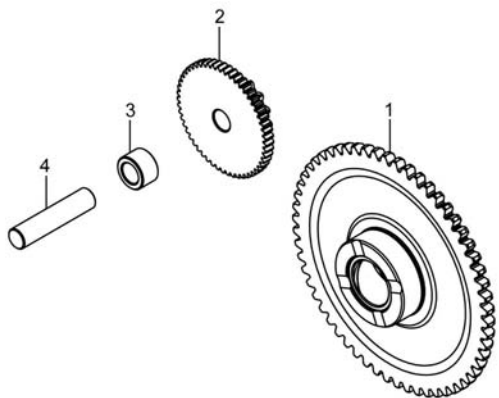


Fig.6 STARTER CLUTCH (P12-S060-0001)

REF. No.	PART No.	DESCRIPTION	Q' TY	REMARKS
1	12620H3J000H000	GEAR COMP, STARTER CLUTCH	1	
2	12611H3J000H000	GEAR, STARTER IDLE	1	
3	09180H10002H000	SPACER	1	
4	12683H36000H000	SHAFT, GEAR 1ST	1	

2

Fig. 7

2

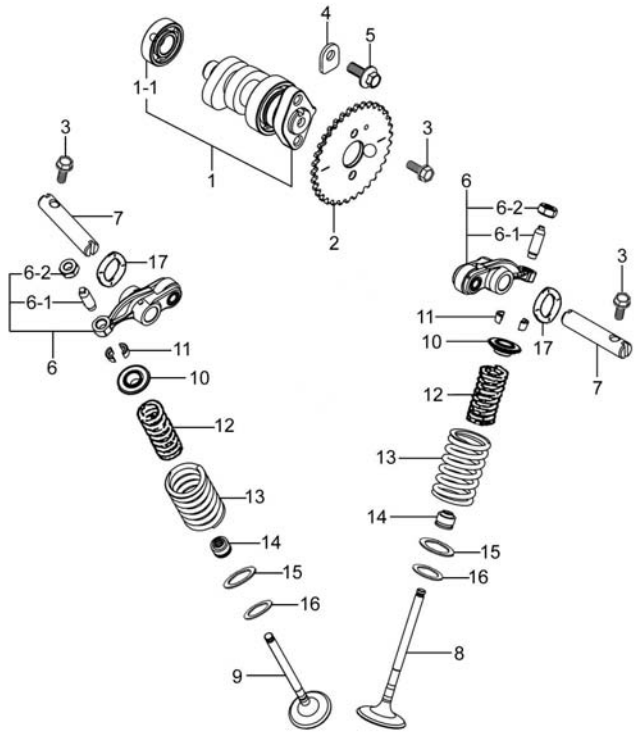


Fig.7 CAMSHAFT-VALVE (P12-S070-0005)

REF. No.	PART No.	DESCRIPTION	Q' TY	REMARKS
1	12710H3J053H000	CAMSHAFT COMP	1	
1-1	09262H12014H000	BEARING	1	RH
2	12741H3J000H000	SPROCKET, CAMSHAFT	1	
3	09103H05001H000	BOLT	4	
4	24741-20A10-000	RETAINER, CAMSHAFT COMP	1	
5	01547-0614A-000	BOLTS, HEXAGON HEAD FLANGE	1	
6	12840H3J001H000	ARM COMP, VALVE ROCKER	2	
6-1	12842H3J000H000	SCREW, TAPPET ADJUSTING	1	
6-2	12852H33000H000	NUT	1	
7	12861H3J000H000	SHAFT, VALVE ROCKER ARM	2	
8	12911H3J010H000	VALVE, INTAKE	1	
9	12912H3J030H000	VALVE, EXHAUST	1	
10	12931H3R000H000	RETAINER VALVE SPRING	2	
11	12932H50100H000	COTTER VALVE	4	
12	12921H3R000H000	SPRING, VALVE INNER	2	
13	12922H3R000H000	SPRING, VALVE OUTER	2	
14	09289H05004H000	SEAL, OIL	2	
15	09181H16001H000	SEAT VALVE SPRING	2	
16	09160H12021H000	WASHER, PLAIN	2	
17	09164H10001H000	WASHER, WAVE	2	

Fig. 8

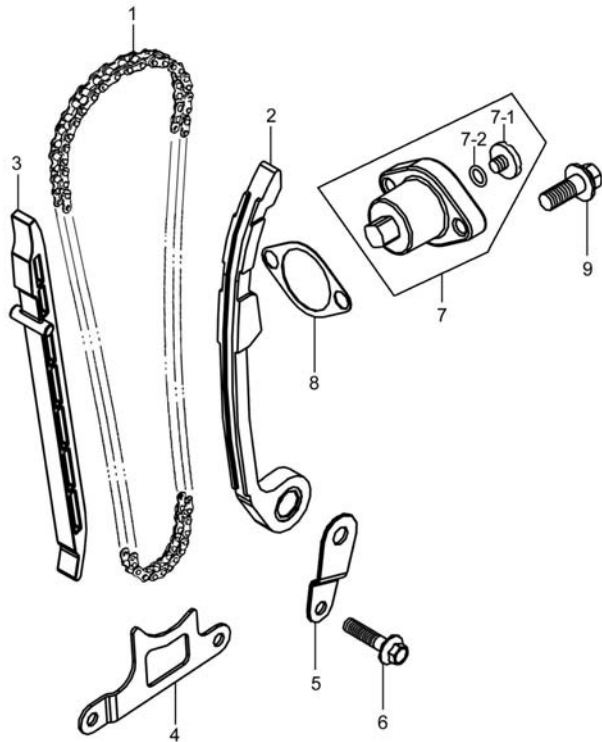


Fig.8 CAM CHAIN (P12-S080-0002)

REF. No.	PART No.	DESCRIPTION	Q'TY	REMARKS
1	12760H3J010H000	CHAIN COMP, CAMSHAFT DRIVE	1	
2	12811H3J010H000	TENSIONER, CAM CHAIN	1	
3	12771H3J000H000	GUIDE, CAM CHAIN	1	
4	11327H3J010H000	STOPPER, CHAIN	1	
5	11327H3J000H000	PLATE	1	
6	01547-0625A-000	BOLT	1	
7	12830H3JY01H000	ADJUSTER SET, TENSIONER	1	
7-1	09125H06002H000	SCREW	1	
7-2	09280H09011H000	O-RING	1	
8	12837H21D20H000	GASKET, TENSIONER ADJUSTER	1	
9	01547-0620A-000	BOLT	2	

2



Fig. 9

2

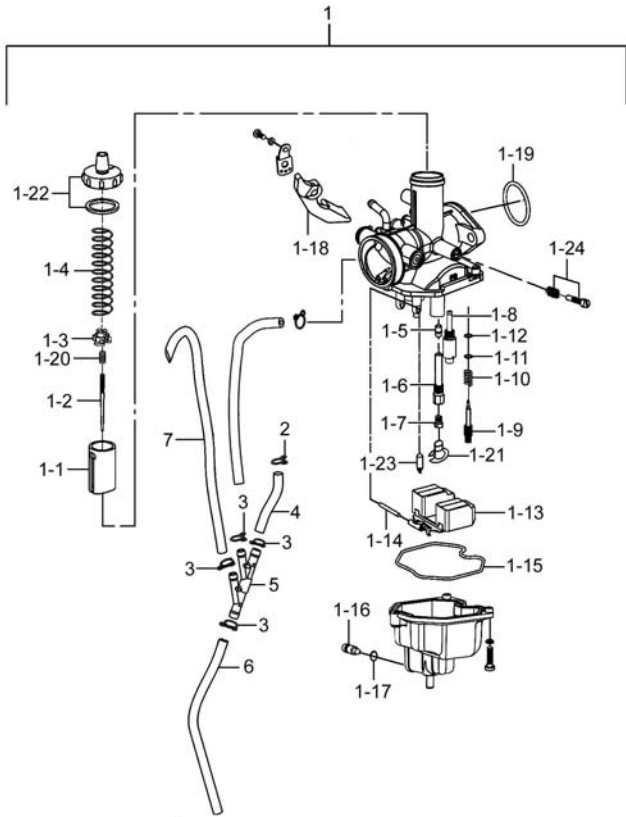


Fig.9 CARBURETOR (P12-S090-0004)

REF. No.	PART No.	DESCRIPTION	Q' TY	REMARKS
1	13200H40010H000	CARBURETOR ASSY	1	
1-1	13551H40010H000	VALVE, PISTON	1	
1-2	13383H40010H000	JET NEEDLE	1	
1-3	13389H12600H000	CAP, JET NEEDLE	1	
1-4	13573H12600H000	COMPRESSION SPRING	1	
1-5	13241H12600H000	NEEDLE JET	1	
1-6	13385H12600H000	JET HOLDER	1	
1-7	09491H20040H000	JET, MAIN	1	
1-8	09492H38040H000	PILOT JET	1	
1-9	13279H40010H000	ADJUSTER	1	
1-10	13268H12600H000	COMPRESSION SPRING	1	
1-11	13382H12600H000	WASHER	1	
1-12	13295H12600H000	O-RING	1	
1-13	13250H12600H000	FLOAT ASSY	1	
1-14	13254H12600H000	FLOAT PIN	1	
1-15	13251H12600H000	GASKET	1	
1-16	13247H12600H000	SCREW, DRAIN	1	
1-17	13389H12610H000	O-RING, DRAIN	1	
1-18	13413H40010H000	LEVER ASSY	1	
1-19	13253H12600H000	O-RING	1	
1-20	13388H12600H000	COMPRESSION SPRING	1	
1-21	13346H40010H000	CAP, MAIN JET	1	
1-22	13261H12600H000	MIXING CAP	1	
1-23	13370H40010H000	NEEDLE VALVE ASSY	1	
1-24	13267H40010H000	ADJUSTER	1	
2	09401-08414-000	CLIP	1	
3	09401-10410-000	CLIP, VACUUM HOSE	4	
4	13683H12601H000	HOSE, DRAIN	1	
5	13286H40010H000	4-WAY PIPE	1	

Fig. 9

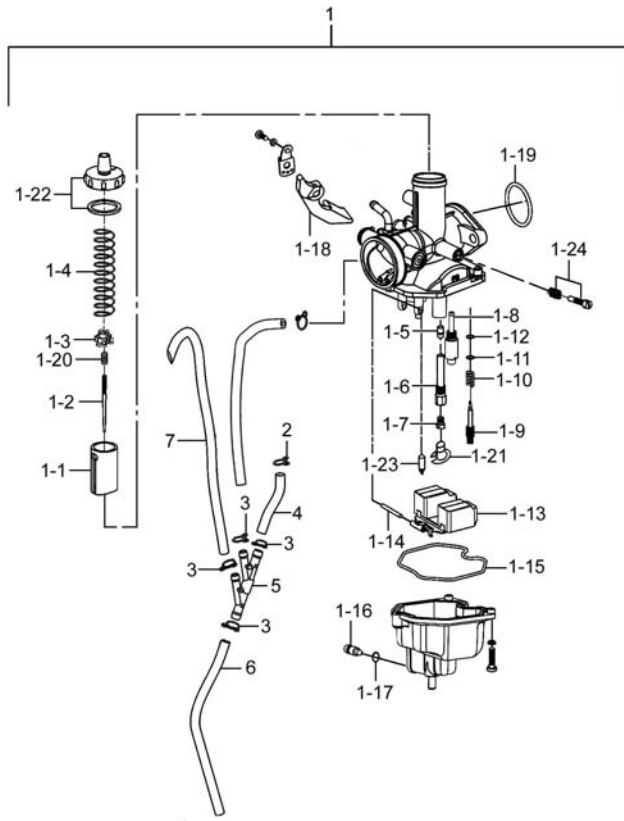


Fig.9 CARBURETOR (P12-S090-0004)

REF. No.	PART No.	DESCRIPTION	Q' TY	REMARKS
6	13687H40010H000	HOSE, OVERFLOW	1	
7	13688H12601H000	HOSE, BREATHER	1	

2



Fig. 10

2

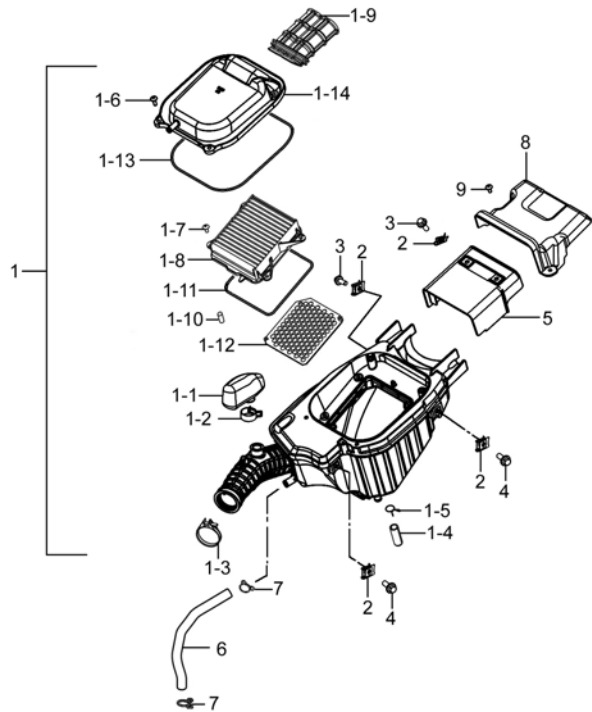


Fig.10 AIR CLEANER (P12-S100-0005)

REF. No.	PART No.	DESCRIPTION	Q' TY	REMARKS
1	13700H40000H000	CLEANER ASSY, AIR	1	
1-1	13886H40000H000	HELMHOLTZ RESONATOR	1	
1-2	09401H21401H000	CLIP	1	
1-3	13170H2C002H000	CLAMP, OUTLET TUBE	1	
1-4	13878H52100H000	TUBE, DRAIN	1	
1-5	09401H14302H000	CLIP	1	
1-6	02142-0516A-000	CROSS RECESSED HEAD SCREW	4	
1-7	02142-0512A-000	CROSS RECESSED HEAD SCREW	4	
1-8	13781H40100H000	FILTER, AIR CLNR	1	
1-9	13891H40000H000	TUBE, INLET	1	
1-10	13898H40100H000	SPONGE, FILTER	1	
1-11	13724H40100H000	GASKET, FILTER	1	
1-12	13810H40100H000	TRAP COMP, FLAME	1	
1-13	13723H40100H000	GASKET, AIR CLNR CAP	1	
1-14	13741H40000H000	CAP, AIR CLNR	1	
2	35157H22501H000	NUT	6	
3	01550-0616A-000	BOLT	4	
4	09111-06061-000	SCREW, FRONT FENDER	2	
5	13787H40100H000	GUARD, WATER	1	
6	13851H40100H000	TUBE, BREATHER	1	
7	09401H15202H000	CLIP	2	
8	13766H40100H000	COVER, WATER PROOF, NO. 2	1	
9	03541-0516A-000	CROSS RECESSED HEAD TAPPING SCREW	2	

Fig. 11

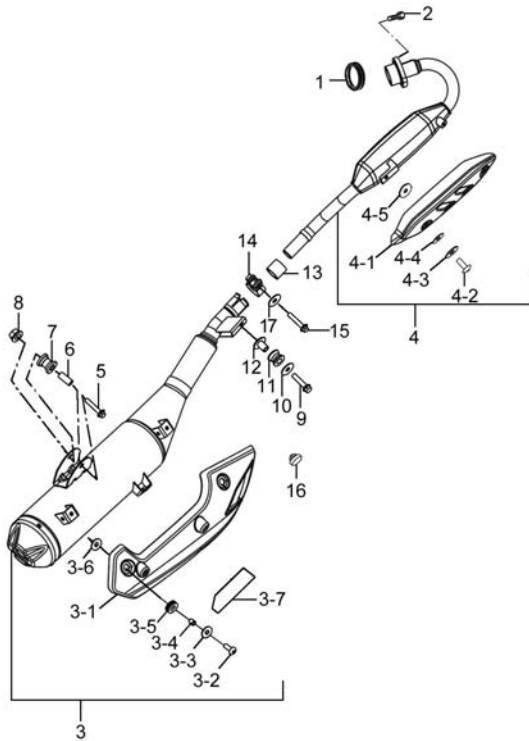


Fig.11 MUFFLER (P12-S110-0008)

REF. No.	PART No.	DESCRIPTION	Q'TY	REMARKS
1	14181H11200H000	GASKET, EXH PIPE	1	
2	07130-0825A-000	BOLT	2	
3	14031H40000H000	BODY SET, MUF	1	
3-1	14791H40100H000	COVER, MUF BODY	1	
3-2	09139H06006H000	SCREW	3	
3-3	09160-06164-000	WASHER, PLAIN	3	
3-4	09180H06336H000	SPACER	3	
3-5	09320H10023H000	CUSHION	3	
3-6	09168H06002H000	GASKET	3	
3-7	14793H40100H000	HEAT-SHIELDED FLAKE, MUF COVER	1	
4	14015H40001H000	PIPE SET, EXHAUST	1	
4-1	14781H40100H000	COVER, MUF, FR	1	
4-2	09139-06027-000	BOLT	2	
4-3	09160-06163-000	WASHER, PLAIN	2	
4-4	09161H06004H000	WASHER	2	
4-5	09168H06002H000	GASKET	2	
5	01550-0845A-000	BOLT	1	
6	14412H40100H000	SPACER	1	
7	14414H40100H000	CUSHION	1	
8	08319-3108A-000	NUT	1	
9	01550-0830A-000	BOLTS, HEXAGON HEAD FLANGE	1	
10	09160H08017H000	WASHER, PLAIN	1	
11	09320H12005H000	CUSHION	1	
12	09180H08015H000	SPACER	1	
13	14771H40100H000	CONNECTOR, MUF	1	
14	14459H40100H000	CLAMP, MUFFLER CONNECTOR	1	
15	01550-0840A-000	BOLTS, HEXAGON HEAD FLANGE	1	
16	09321H09002H000	CUSHION	2	
17	09160H08008H000	WASHER, PLAIN	1	

2

Fig. 12

2

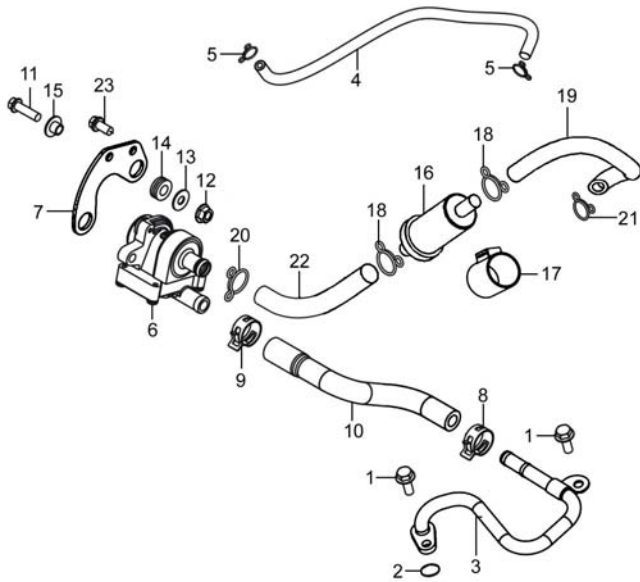


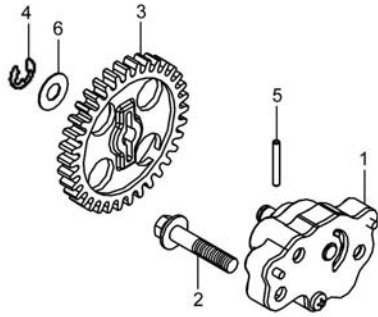
Fig.12 2ND AIR VAVLE (P12-S120-0002)

REF. No.	PART No.	DESCRIPTION	Q' TY	REMARKS
1	01547-0616A-000	BOLT	2	
2	09280H10002H000	O-RING	1	
3	18410H40000H000	PIPE COMP, 2ND AIR	1	
4	18463H40000H000	HOSE, 2ND AIR VALVE VACUUM	1	
5	09401H07201H000	CLIP	2	
6	18450H2G1110H000	VALVE ASSY, 2ND AIR	1	
7	18610H40000H000	BRACKET COMP, 2ND AIR VALVE	1	
8	09401-15404-000	CLIP, FUEL HOSE	1	
9	09401-17401-000	CLIP	1	
10	18461H40000H000	HOSE, 2ND AIR VALVE	1	
11	01547-0625A-000	BOLT	2	
12	08316-1006A-000	NUT	2	
13	09160-06006-000	WASHER	2	
14	09320-08051-000	CUSHION, MUF COVER	2	
15	09180H06034H000	SPACER	2	
16	44330H12900H000	CLEANER COMP, AIR	1	
17	18715H40000H000	RUBBER, 2ND AIR CLNR	1	
18	09401H13002H000	CLIP	2	
19	18712H40000H000	HOSE, 2ND AIR CLNR	1	
20	09401H15202H000	CLIP	1	
21	09401H12302H000	CLIP	1	
22	18711H40000H000	HOSE, 2ND AIR CLNR	1	
23	01547-0612A-000	HEXAGON BOLT WITH FLANGE	2	

Fig. 13

Fig.13 OIL PUMP (P12-S130-0003)

REF. No.	PART No.	DESCRIPTION	Q'TY	REMARKS
1	16400H3J000H000	PUMP ASSY, ENG OIL	1	
2	01547-0630A-000	BOLT	2	
3	16330H3J010H000	GEAR COMP, OIL PUMP DRIVEN	1	
4	09383-05001-000	E-RING	1	
5	09261-02001-000	PIN, OIL PUMP DRIVEN GEAR	1	
6	16422-20E00-000	WASHER, OIL PUMP DRIVEN	1	



2



Fig. 14

2

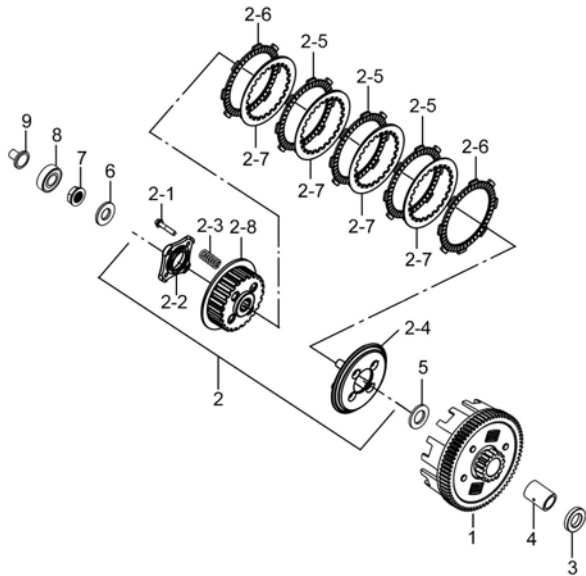


Fig.14 CLUTCH (P12-S140-0004)

REF. No.	PART No.	DESCRIPTION	Q' TY	REMARKS
1	21200H3J040H000	GEAR ASSY, PRIMARY DRIVEN	1	
2	21410H3J030H000	HUB ASSY, CLUTCH SLEEVE	1	
2-1	01550-0622A-000	BOLT, HEXAGON HEAD FLANGE	4	
2-2	21471H3G000H000	PLATE, CLUTCH PUSH ROD	1	
2-3	21413H3D010H000	SPRING, CLUTCH	4	
2-4	21462H3E000H000	DISC, CLUTCH PRESSURE	1	
2-5	21441H36030H000	PLATE, CLUTCH DRIVE	3	
2-6	21441H3J000H000	PLATE, CLUTCH DRIVE	2	
2-7	21451H3E010H000	PLATE, CLUTCH DRIVEN	4	
2-8	21411H3G000H000	HUB, CLUTCH SLEEVE	1	
3	09180H17005H000	SPACER	1	
4	21251H3J000H000	SPACER, PRIMARY DRIVEN GEAR	1	
5	21481H3J000H000	WASHER, CLUTCH SLEEVE HUB	1	
6	21324H3J000H000	WASHER	1	
7	21346H3J000H000	NUT, LOCK	1	
8	09262H17001H000	BEARING, CLUTCH	1	
9	23131H3J010H000	POLE, CLUTCH PUSH	1	

Fig. 15

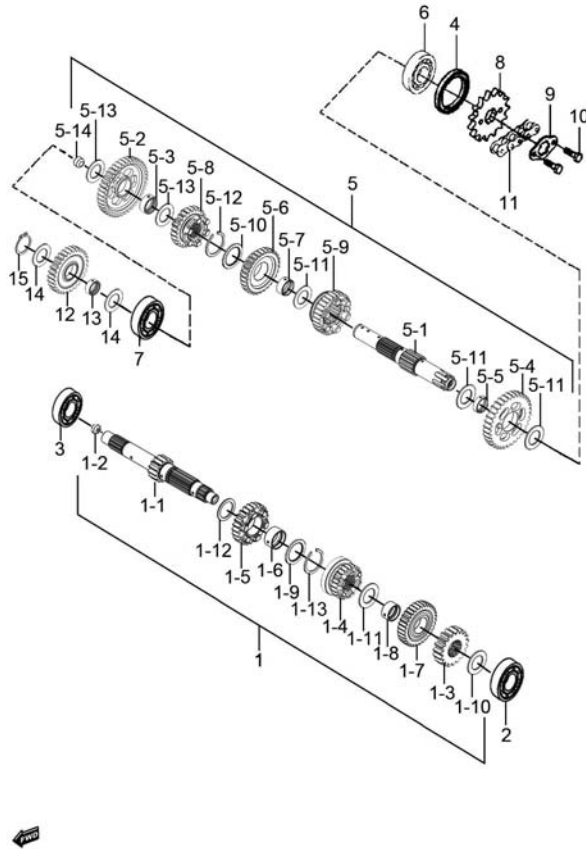


Fig.15 TRANSMISSION (P12-S150-0005)

REF. No.	PART No.	DESCRIPTION	Q'TY	REMARKS
1	24102H3J020H000	SHAFT ASSY, COUNTER	1	
1-1	24121H3J010H000	SHAFT, COUNTER	1	
1-2	24125H3J000H000	NOZZLE, CNTR SHAFT OIL	1	
1-3	24221H3J010H000	GEAR, 2ND DRIVE	1	
1-4	24231H3J010H000	GEAR, 3RD DRIVE	1	
1-5	24241H3J020H000	GEAR, 4TH DRIVE	1	
1-6	24242H3J000H000	BUSH, 4TH DRIVE GEAR	1	
1-7	24251H3J020H000	GEAR, 5TH DRIVE	1	
1-8	24252H3J000H000	BUSH, 5TH DRIVE GEAR	1	
1-9	24232H3J000H000	WASHER, SPLINE	1	
1-10	09160H20001H000	WASHER, PLAIN	1	
1-11	09160H12014H000	WASHER, PLAIN	1	
1-12	09160H17002H000	WASHER, PLAIN	1	
1-13	09380H18002H000	CIRCLIP	1	
2	09262H12009H000	BEARING	1	
3	09262H17017H000	BEARING	1	
4	09283H20013H000	SEAL, OIL	1	
5	24103H3J010H000	SHAFT ASSY, DRIVE	1	
5-1	24131H3R000H000	SHAFT, DRIVE	1	
5-2	24311H3J010H000	GEAR, 1ST DRIVEN	1	
5-3	24312H3J000H000	BUSH, 1ST DRIVEN GEAR	1	
5-4	24321H3J010H000	GEAR, 2ND DRIVEN	1	
5-5	24322H3J000H000	BUSH, 2ND DRIVEN GEAR	1	
5-6	24331H3J010H000	GEAR, 3RD DRIVEN	1	
5-7	24332H3J000H000	BUSH, 3RD DRIVEN GEAR	1	
5-8	24341H3J010H000	GEAR, 4TH DRIVEN	1	
5-9	24351H3J010H000	GEAR, 5TH DRIVEN	1	
5-10	24232H3J000H000	WASHER, SPLINE	1	
5-11	09160H20001H000	WASHER, PLAIN	3	

2

Fig. 15

2

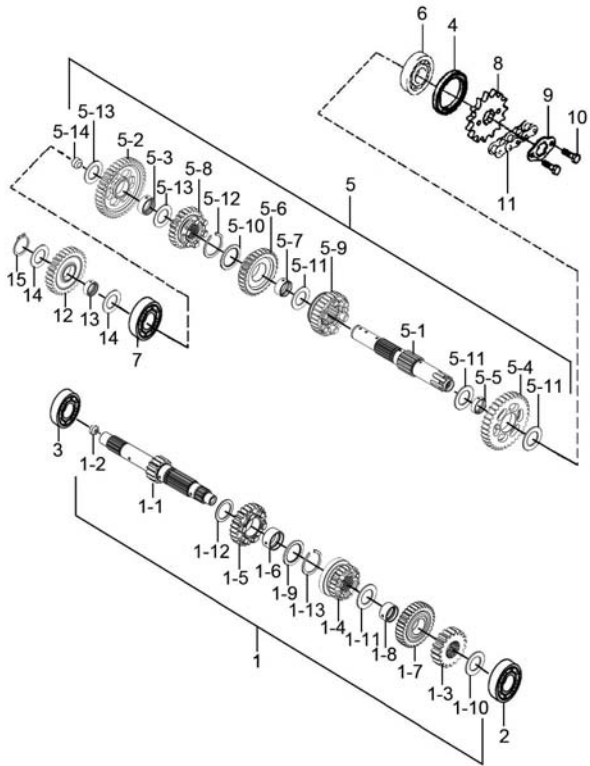


Fig.15 TRANSMISSION (P12-S150-0005)

REF. No.	PART No.	DESCRIPTION	Q' TY	REMARKS
5-12	09380H18002H000	CIRCLIP	1	
5-13	09160H17002H000	WASHER, PLAIN	2	
5-14	09241H08001H000	PLUG, OIL	1	
6	09262-20151-000	BEARING	1	
7	09262H17007H000	BEARING	1	
8	27511H3J000H000	SPROCKET, ENGINE	1	
9	27521H33010H000	WASHER	1	
10	07130-0610A-000	HEXAGON SOCKET HEAD CAP SCREW	2	
11	27600H3R000H130	CHAIN ASSY, DRIVE	1	
12	26261H3J000H000	GEAR, KICK STARTER IDLE	1	
13	24312H3J000H000	BUSH, 1ST DRIVEN GEAR	1	
14	09160H17003H000	WASHER	2	
15	09380H16001H000	RING, SNAP	1	

Fig. 16

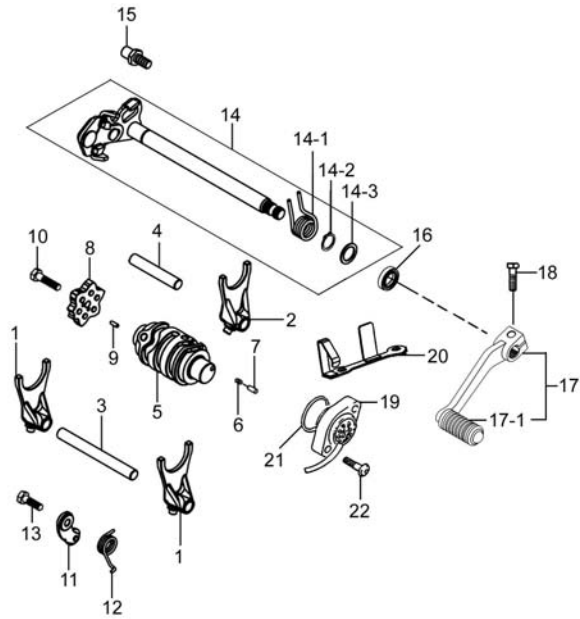


Fig.16 GEAR SHIFTING (P12-S160-0003)

REF. No.	PART No.	DESCRIPTION	Q'TY	REMARKS
1	25211H3J000H000	FORK, GEAR SHIFT NO. 1	2	
2	25231H3J000H000	FORK, GEAR SHIFT, MIDDLE	1	
3	25411H3J000H000	SHAFT, GEAR SHIFT FORK NO. 1	1	
4	25421H3J000H000	SHAFT, GEAR SHIFT FORK, NO. 2	1	
5	25311H3J000H000	CAM, GEAR SHIFT	1	
6	09440H04030H000	SPRING, COMPRESSION	1	
7	25314H3E000H000	PIN, CAM SHIFT	1	
8	25380H3J000H000	PLATE COMP, GEAR SHIFT CAM	1	
9	25335H3J000H000	PIN, GEAR SHIFT FIVE-STAR WHEEL	2	
10	09100H06022H000	BOLT, HEXAGON	1	
11	25350H3J000H000	STOPPER COMP, GEAR SHIFT CAM	1	
12	25351H3J000H000	SPRING, GEAR SHIFT CAM STOPPER	1	
13	09100H06022H000	BOLT, HEXAGON	1	
14	25500H3J000H000	SHAFT ASSY, GEAR SHIFT	1	
14-1	25518H3J000H000	SPRING, SHIFT SHAFT RETURN	1	
14-2	08331-31149-000	CIRCLIP, KICK SHAFT	1	
14-3	09181H14004H000	WASHER, THRUST	1	
15	25671H3J000H000	STOPPER, GEAR SHIFT ARM	1	
16	09283H14003H000	SEAL, OIL	1	
17	25600H40100H000	LEVER ASSY, GEAR SHIFT	1	
17-1	25652-20C00-000	RUBBER, GEAR SHIFT PEDAL, FR	1	
18	01500-0820A-000	BOLT	1	
19	37720H3J010H000	BASE ASSY, GEAR SHIFT TERM	1	
20	37725H3J000H000	PLATE, GEAR SHIFT PRESSURE	1	
21	09280H19001H000	O-RING	1	
22	02112-0418A-000	CROSS RECESSED HEAD SCREW	2	

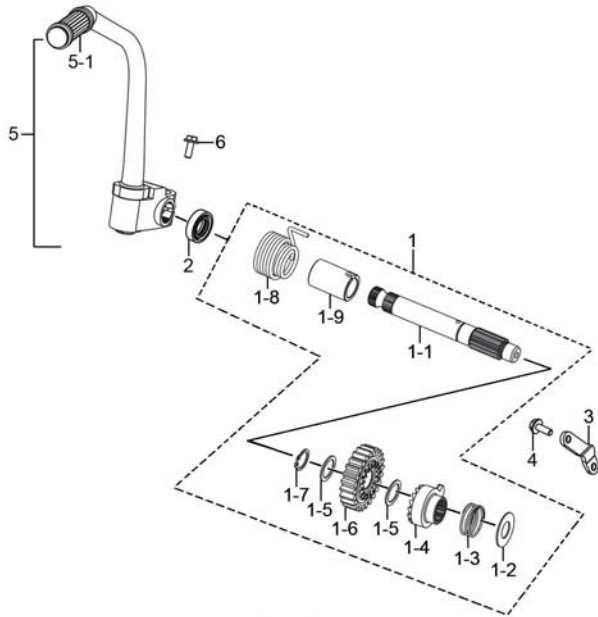
2



Fig. 17

Fig.17 KICK STARTER (P12-S165-0002)

REF. No.	PART No.	DESCRIPTION	Q' TY	REMARKS
1	26210H3J000H000	SHAFT COMP, KICK STARTER	1	
1-1	26211H3J000H000	SHAFT, KICK STARTER	1	
1-2	09160H14006H000	WASHER, THRUST	1	
1-3	26226H3J000H000	SPRING, RELEASE	1	
1-4	26251H3J000H000	RATCHET WHEEL	1	
1-5	09160H16001H000	WASHER	2	
1-6	26241H3J000H000	GEAR, KICK STARTER DRIVE	1	
1-7	09380H15002H000	RING, SNAP	1	
1-8	26212H3J000H000	SPRING, KICK STARTER SHAFT	1	
1-9	26221H3J000H000	GUIDE, KICK STARTER SHAFT SPRIN	1	
2	09283H16001H000	SEAL, OIL	1	
3	26256H3J000H000	GUIDE, KICK STARTER	1	
4	01550-0616A-000	BOLT	2	
5	26300H40100H000	LEVER ASSY, KICK STARTER	1	
5-1	26352-01000-000	RUBBER, KICK STARTER LEVER	1	
6	01500-0825A-000	BOLTS, HEXAGON HEAD	1	



2

Fig. 18

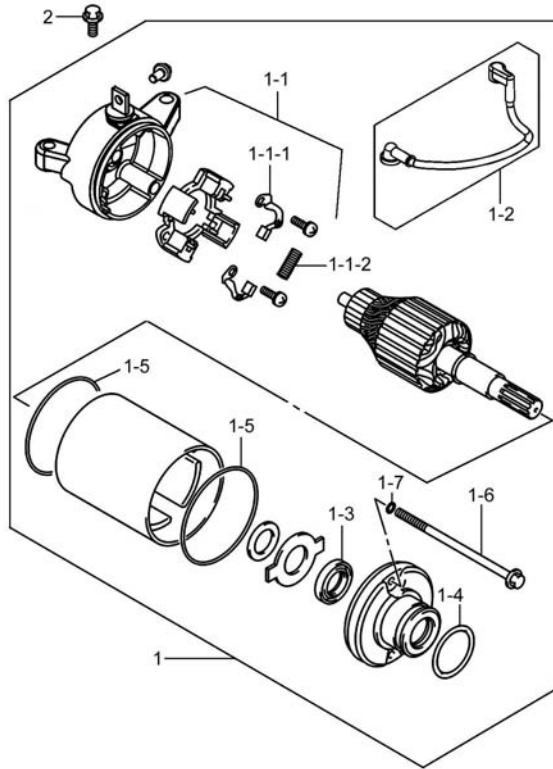


Fig.18 STARTING MOTOR (P12-S170-0003)

REF. No.	PART No.	DESCRIPTION	Q' TY	REMARKS
1	31100H3J022H000	MOTOR ASSY, STARTING	1	
1-1	31175H3J001H000	FRAME ASSY	1	
1-1-1	31133H3J000H000	BRUSH, STARTER MOTOR, MINUS	2	
1-1-2	31135-05530-000	SPRING	4	
1-2	33810H3J020H000	WIRE, STARTER MOTOR	1	
1-3	31153H3J000H000	OIL SEAL, STARTER MOTOR	1	
1-4	09280-24003-000	O RING (D:3, ID:24.5)	1	
1-5	31264-05530-000	O RING	2	
1-6	31281H3J000H000	BOLT	2	
1-7	31156-05530-000	O RING	2	
2	01547-0630A-000	BOLT	2	

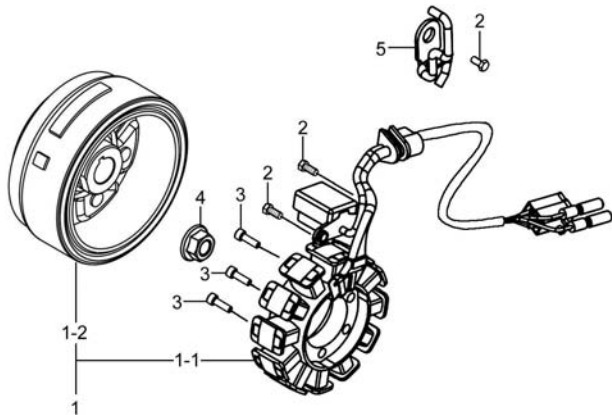
3



Fig. 19

Fig.19 MAGNETO (P12-S180-0002)

REF. No.	PART No.	DESCRIPTION	Q' TY	REMARKS
1	32100H3J000H000	MAGNETO ASSY	1	
1-1	32101H3J000H000	STATOR ASSY	1	
1-2	32102H3J000H000	ROTOR ASSY	1	
2	09100H05005H000	BOLT, HEXAGON	3	
3	07130-0625A-000	BOLT	3	
4	08316-1014A-000	NUT	1	
5	32115H3J010H000	PLATE, WIRE PRESSURE	1	



3



Fig. 20

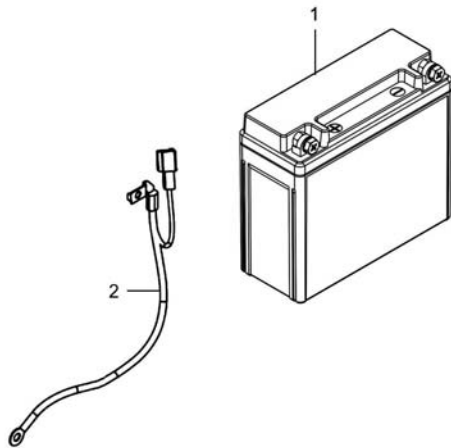


Fig.20 BATTERY (P12-S190-0005)

REF. No.	PART No.	DESCRIPTION	Q' TY	REMARKS
1	33620H2C010H000	FILLED BATTERY ASSY	1	
2	33860H40100H000	WIRE, BATTERY MINUS LEAD	1	

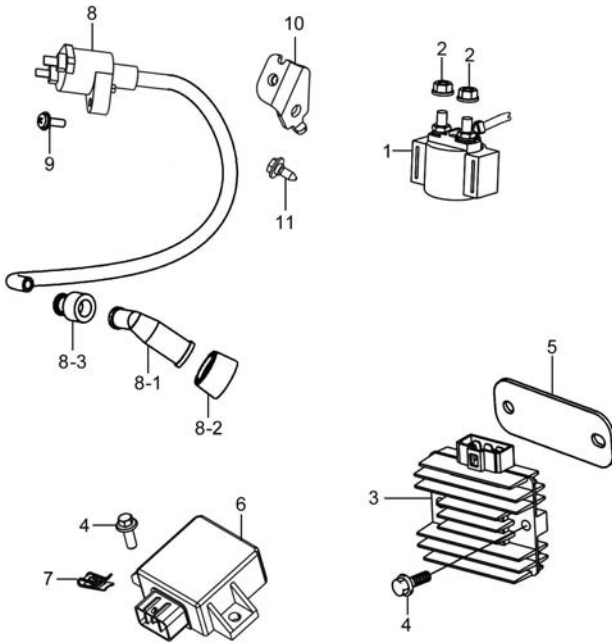
3



Fig. 21

Fig.21 ELECTRICAL (P12-S200-0005)

REF. No.	PART No.	DESCRIPTION	Q' TY	REMARKS
1	31800H73101H000	RELAY ASSY, STARTING MOTOR	1	
2	08361-3506A-000	NUT	2	
3	32800H51001H000	RECTIFIER ASSY	1	
4	01550-0616A-000	BOLT	4	
5	32831H40100H000	BRACKET, RECT FTG	1	
6	32900H40000H000	CDI UNIT	1	
7	35157H22501H000	NUT	2	
8	33410H40000H000	COIL ASSY, IGNITION	1	
8-1	33510H33811H000	CAP ASSY, SPARK PLUG	1	
8-2	33541-38210-000	SEAL, SPARK PLUG	1	
8-3	33542H05500H000	SEAL, HIGH TENSION CORD	1	
9	02112-1520A-000	CROSS RECESSED HEAD SCREW	1	
10	33414H40000H000	BRACKET, IGNITION COIL	1	
11	09136H06003H000	SCREW WITH WASHER	1	



3

Fig. 22

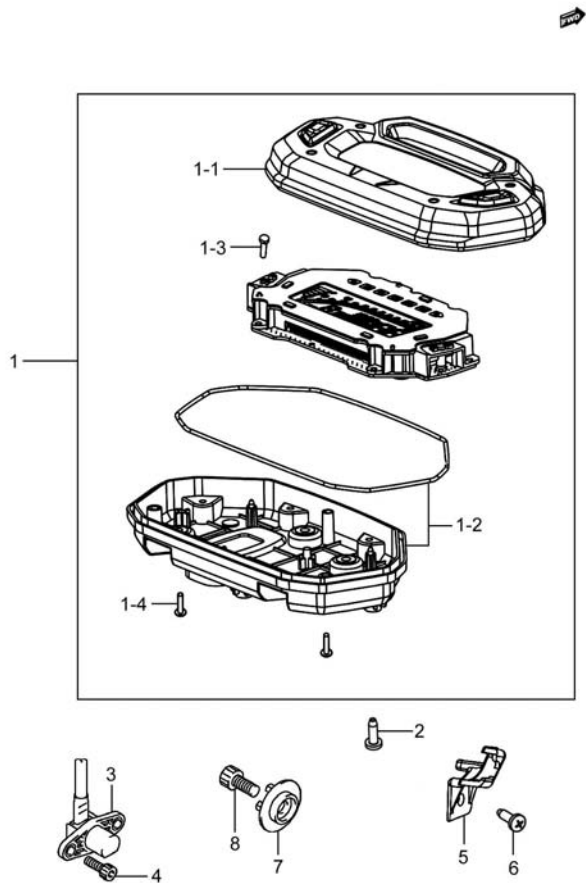


Fig.22 SPEEDOMETER (P12-S210-0005)

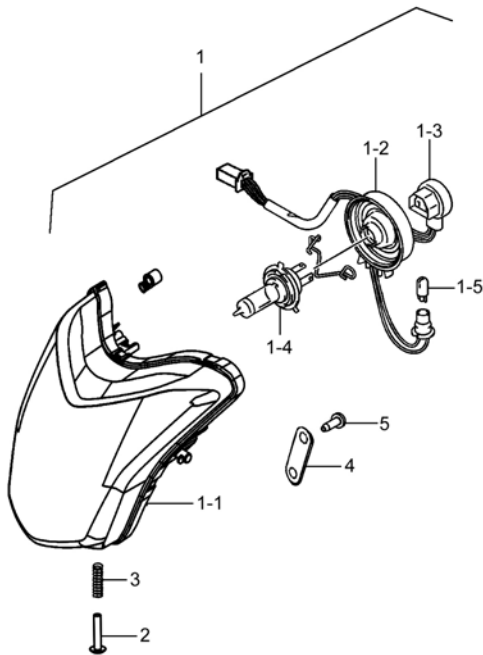
REF. No.	PART No.	DESCRIPTION	Q' TY	REMARKS
1	34100H40000H000	SPEEDOMETER ASSY	1	
1-1	34150H40100H000	HOOD, SPEEDOMETER	1	
1-2	34111H40100H000	CASE, SPEEDOMETER, LOWER	1	
1-3	34124H37200H000	KNOB, SPEEDOMETER	2	
1-4	03541-0416A-000	CROSS RECESSED HEAD TAPPING SCREW	6	
2	35151-21J00-000	SCREW, HEADLAMP	3	
3	34990H2A410H000	SENSOR COMP, SPEED	1	
4	07130-0512A-000	HEXAGON SOCKET HEAD CAP SCREW	2	
5	34997H40100H000	CLAMP, SPEED SENSOR	1	
6	03541-0516A-000	CROSS RECESSED HEAD TAPPING SCREW	1	
7	34981-26H00-000	ROTOR, SPEED	1	
8	07130-0825A-000	BOLT	1	

3

Fig. 23

Fig.23 HEADLAMP (P12-S220-0003)

REF. No.	PART No.	DESCRIPTION	Q' TY	REMARKS
1	35100H40100H000	HEADLAMP ASSY	1	
1-1	35121H40100H000	UNIT, HEADLAMP	1	
1-2	35174H7J000H000	BOOT, HEADLAMP HOUSING	1	
1-3	35171H40100H000	CORD, HEADLAMP	1	
1-4	09471H12001H000	BULB (12V, 35/35W)	1	HS1 12V 35/35W
1-5	09471-12081-000	BULB, POSITION LAMP	1	12V W5W
2	35151H40100H000	SCREW, HEADLAMP	1	
3	35154H40100H000	SPRING, HEADLAMP ADJUST	1	
4	35194H40100H000	CLAMP, HEAD LAMP	2	
5	03541-0412A-000	CROSS RECESSED HEAD TAPPING SCREW	4	



3

Fig. 24

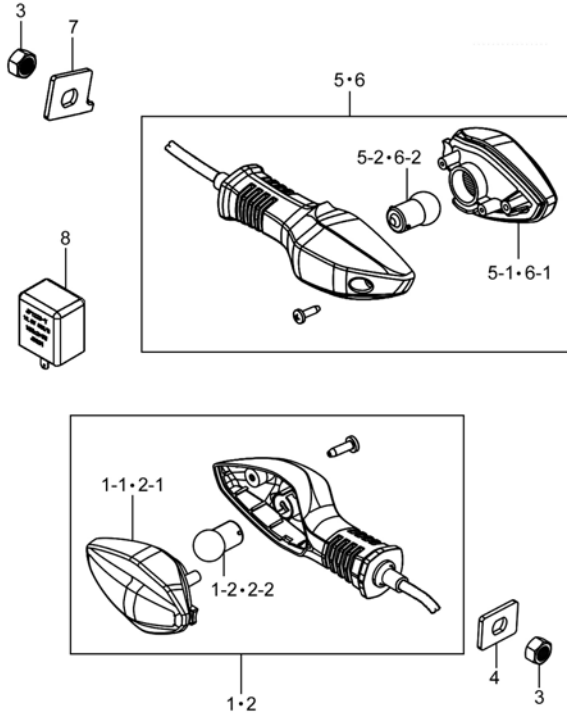


Fig.24 TURN SIGNAL LAMP (P12-S230-0003)

REF. No.	PART No.	DESCRIPTION	Q'TY	REMARKS
1	35601H40100H000	LAMP ASSY, FRONT TURNSIGNAL, R	1	
1-1	35610H2C000H000	UNIT, FRONT TURNSIGNAL, R	1	
1-2	09471H12019H000	BULB (12V, 10W)	1	12V RY10W
2	35602H40100H000	LAMP ASSY, FRONT TURNSIGNAL, L	1	
2-1	35630H2C000H000	UNIT, FRONT TURNSIGNAL, L	1	
2-2	09471H12019H000	BULB (12V, 10W)	1	12V RY10W
3	08310-0010A-000	HEXAGON NUT	4	
4	35616H11A01H000	PLATE, TURNSIGNAL	2	
5	35603H2C000H000	LAMP ASSY, REAR TURNSIGNAL, R	1	
5-1	35630H2C000H000	UNIT, FRONT TURNSIGNAL, L	1	
5-2	09471H12019H000	BULB (12V, 10W)	1	12V RY10W
6	35604H2C000H000	LAMP ASSY, REAR TURNSIGNAL, L	1	
6-1	35610H2C000H000	UNIT, FRONT TURNSIGNAL, R	1	
6-2	09471H12019H000	BULB (12V, 10W)	1	12V RY10W
7	35616H40100H000	PLATE, TURNSIGNAL	2	
8	38610H11222H000	RELAY ASSY, TURNSIGNAL	1	

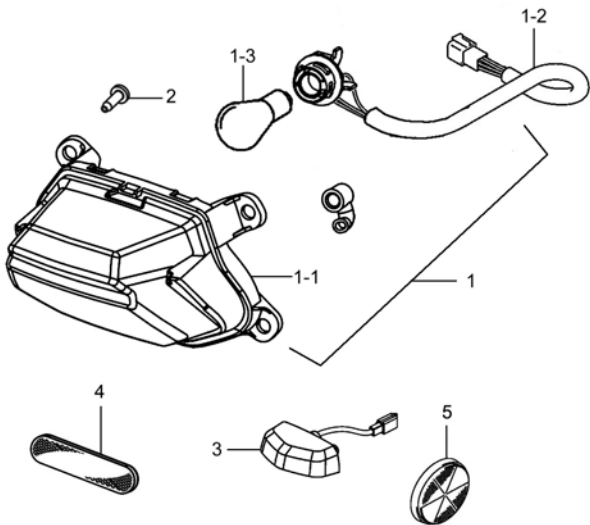
3



Fig. 25

Fig.25 REAR COMBINATION LAMP (P12-S240-0008)

REF. No.	PART No.	DESCRIPTION	Q'TY	REMARKS
1	35710H40100H000	LAMP ASSY, REAR COMB	1	
1-1	35720H40100H000	UNIT, REAR COMB	1	
1-2	35718H40100H000	CORD COMP, REAR COMB	1	
1-3	09471-12128-000	BULB (12V, 21/5W)	1	12V P21/5W
2	92125-33GC0-000	SCREW, LID INNER COVER	6	
3	35910H40102H000	LAMP ASSY, LICENSE	1	
4	35970H2C001H000	REFLEX REFLECTOR ASSY, REAR	1	
5	35950H05301H000	REFLEX REFLECTOR ASSY, SIDE	2	



3

Fig. 26

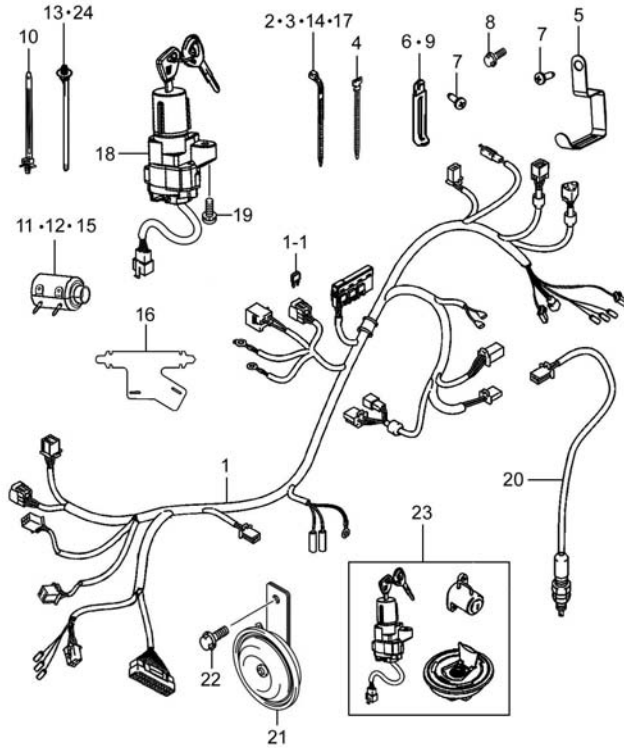


Fig.26 WIRING HARNESS (P12-S250-0010)

REF. No.	PART No.	DESCRIPTION	Q' TY	REMARKS
1	36610H40001H000	HARNESS WIRING	1	
1-1	36720H2C100H000	FUSE ASSY	2	
2	36990-32G20-000	CLAMP, WIRING HARNESS	1	L=125
3	36990-32G10-000	CLAMP, WIRING HARNESS	2	L=165
4	09407-12402-000	CLAMP, WIRING HARNESS	2	L=128
5	36651-26H50-000	CLAMP, WIRING HARNESS	1	
6	09404-06030-000	CLAMP	2	L=95
7	03541-0416A-000	CROSS RECESSED HEAD TAPPING SCREW	4	
8	01550-0610A-000	BOLTS, HEXAGON HEAD FLANGE	1	
9	09404-06429-000	CLAMP, CARB OVFL HOSE	2	L=60
10	36651-12F10-000	CLAMP	1	
11	36618H2A000H000	BOOT, WIRING HARNESS	2	OD=60
12	36618H2D000H000	PROTECTOR, WIRING HARNESS	1	OD=40
13	36651-26H10-000	CLAMP, WIRING HARNESS	1	L=90
14	09407-10404-000	CLAMP, WIRING HARNESS	1	L=100
15	36618H79201H000	BOOT, WIRING HARNESS	1	OD=50
16	36611H40100H000	PROTECTOR, WIRING HARNESS	1	
17	36990-32G30-000	CLAMP, WIRING HARNESS	1	L=95
18	37100H2F030H000	LOCK ASSY, STEERING	1	
19	09139-06048-000	BOLT, STEERING LOCK	2	
20	37740H40000H000	SWITCH ASSY, STOP LAMP	1	
21	38500H2H000H000	HORN ASSY	1	
22	01550-0612A-000	BOLT	1	
23	37011H2F00BH000	LOCK SET	1	
24	36651-26H00-000	CLAMP, WIRING HARNESS	1	

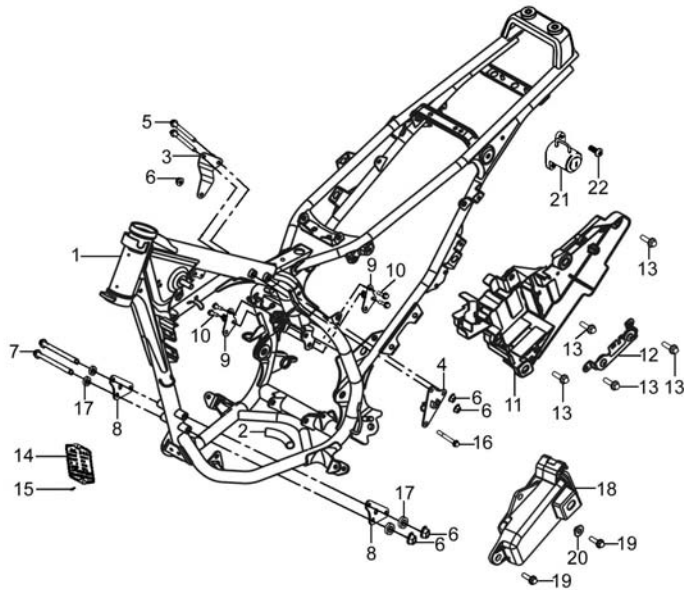
3



Fig. 27

Fig.27 FRAME (P12-S260-0006)

REF. No.	PART No.	DESCRIPTION	Q' TY	REMARKS
1	41100H40000H000	FRAME COMP	1	
2	41762H40100H000	PROTECTOR	1	
3	41970H40000H000	PLATE COMP, ENG MTG UPPER, R	1	
4	41980H40100H000	PLATE COMP, ENG MTG UPPER, L	1	
5	01550-0875A-000	HEXAGON BOLT WITH FLANGE	2	
6	08319-3108A-000	NUT	5	
7	09103H08010H000	BOLT, HEXAGON	2	
8	41992H40100H000	BRACKET, ENG MTG LOWER, R	2	
9	41941H40110H000	PLATE, ENG MTG RR, L	2	
10	01550-0816A-000	HEXAGON BOLT WITH FLANGE	4	
11	41540H40100H000	BOX ASSY, BATTERY	1	
12	41540H40110H000	HOLDER ASSY, BATTERY	1	
13	01550-0612A-000	BOLT	5	
14	68311H56110H000	PLATE, LICENSE	1	
15	09229H03003H000	RIVET, BLIND	2	
16	09103H08012H000	BOLT, HEXAGON	1	
17	09180H08026H000	SPACER	4	
18	47430H40100H000	BOX ASSY, TOOL	1	
19	01550-0616A-000	BOLT	2	
20	09180H06034H000	SPACER	1	
21	95700H05310H000	LOCK ASSY, SEAT NO. 1	1	
22	95729-05360-000	SCREW, HELMET LOCK	2	



4

Fig. 28

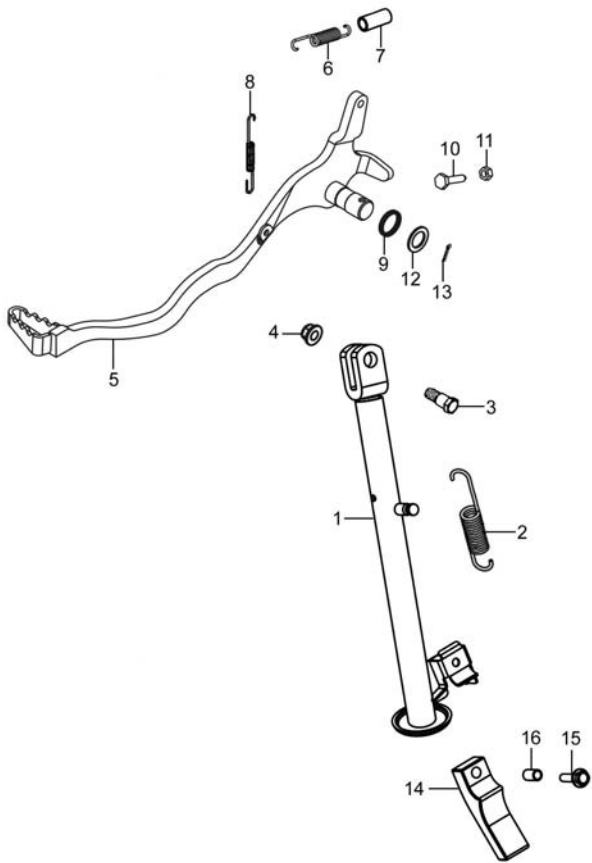


Fig.28 STAND (P12-S270-0003)

REF. No.	PART No.	DESCRIPTION	Q'TY	REMARKS
1	42310H40100H000	STAND COMP, PROP	1	
2	42241H40100H000	SPRING, PROP STAND	1	
3	09111H10009H000	BOLT	1	
4	08319-3110A-000	NUT	1	
5	43110H40110H000	PEDAL COMP, BRAKE	1	
6	09443H14004H000	SPRING, TENSION	1	
7	43142H21302H000	HOSE, RUBBER	1	
8	09443H08001H000	SPRING, TENSION	1	
9	43116H22500H000	SEAL, BRAKE PEDAL	2	
10	43159-45F00-000	BOLT, BRAKE PEDAL ADJUSTER	1	
11	08310-0006A-000	NUT	1	
12	09160H17001H000	WASHER, PLAIN	1	
13	04111-2525A-000	COTTER PIN	1	
14	42336H40100H000	RUBBER, PROP STAND	1	
15	01550-0625A-000	BOLT	1	
16	09180H06035H000	SPACER	1	

4



Fig. 29

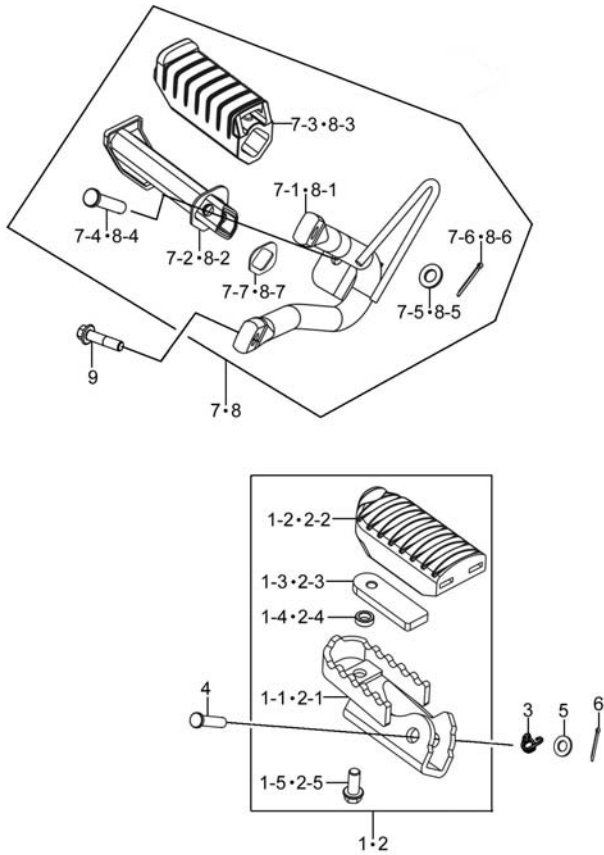


Fig.29 FOOTREST (P12-S280-0005)

REF. No.	PART No.	DESCRIPTION	Q' TY	REMARKS
1	43501H40102H000	FOOTREST ASSY, FRONT, R	1	
1-1	43510H40101H000	BRACKET COMP, FR FOOTREST, R	1	
1-2	43551H40100H000	RUBBER, FRONT FOOTREST	1	
1-3	43581H40100H000	PLATE, FOOTREST	1	
1-4	09180H06010H000	SPACER	1	
1-5	09103H06020H000	BOLT	1	
2	43502H40102H000	FOOTREST ASSY, FRONT, L	1	
2-1	43520H40101H000	BRACKET COMP, FR FOOTREST, L	1	
2-2	43551H40100H000	RUBBER, FRONT FOOTREST	1	
2-3	43581H40100H000	PLATE, FOOTREST	1	
2-4	09180H06010H000	SPACER	1	
2-5	09103H06020H000	BOLT	1	
3	09448H14005H000	SPRING, TORSION	2	
4	09200H08004H000	PIN WITH HOLE	2	
5	09160-08153-000	WASHER, PLAIN	2	
6	04111-2020A-000	COTTER PIN	2	
7	43600H40100H000	FOOTREST ASSY, PILLION, R	1	
7-1	43620H40100H000	HOLDER COMP, PILLION FOOTREST, R	1	
7-2	43610H40100H000	BAR COMP, PILLION FOOTREST, R	1	
7-3	43612H40100H000	RUBBER, PILLION FOOTREST, R	1	
7-4	09200-08002-000	PIN, FR FOOTREST	1	
7-5	09160-08153-000	WASHER, PLAIN	1	
7-6	04111-2020A-000	COTTER PIN	1	
7-7	43631H40100H000	WASHER, PILLION FOOTREST RUBBER	1	
8	43700H40100H000	FOOTREST ASSY, PILLION, L	1	
8-1	43720H40100H000	HOLDER COMP, PILLION FOOTREST, L	1	
8-2	43710H40100H000	BAR COMP, PILLION FOOTREST, L	1	
8-3	43712H40100H000	RUBBER, PILLION FOOTREST, L	1	
8-4	09200-08002-000	PIN, FR FOOTREST	1	

Fig. 29

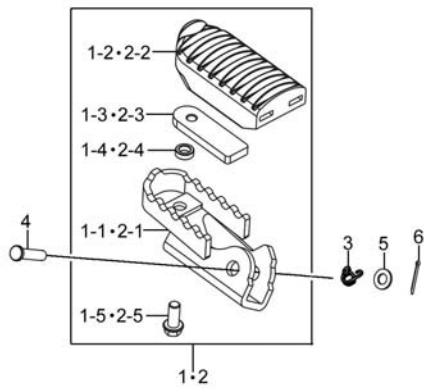
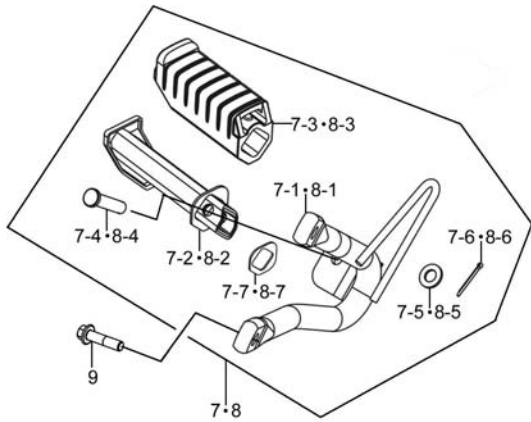


Fig.29 FOOTREST (P12-S280-0005)

REF. No.	PART No.	DESCRIPTION	Q' TY	REMARKS
8-5	09160-08153-000	WASHER, PLAIN	1	
8-6	04111-2020A-000	COTTER PIN	1	
8-7	43631H40100H000	WASHER, PILLION FOOTREST RUBBER	1	
9	01550-0825A-000	BOLTS, HEXAGON HEAD FLANGE	4	

4



Fig. 30

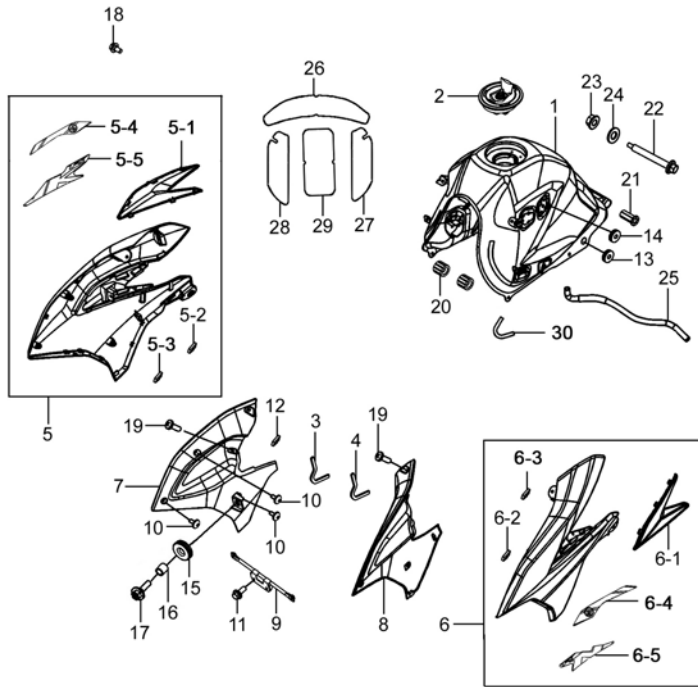


Fig.30 FUEL TANK (P12-S290-0010)

REF. No.	PART No.	DESCRIPTION	Q' TY	REMARKS
1	44011H40000HF04	FUEL TANK SET (RED)	1	
1	44011H40000HF05	FUEL TANK SET (BLACK)	1	
1	44011H40000HF06	FUEL TANK SET (WHITE)	1	
2	44200H2C100H000	CAP ASSY, FUEL TANK FILLER	1	
3	44162H40100H000	CUSHION, FRONT COVER, R	1	
4	44262H40100H000	CUSHION, FRONT COVER, L	1	
5	44017H4010GHF01	COVER SET, FUEL TANK, R (BLACK)	1	
5	44017H4010GHF02	COVER SET, FUEL TANK, R (BLACK)	1	
5	44017H4010GHF03	COVER SET, FUEL TANK, R (BLACK)	1	
5-1	44173H40100H000	SHIELD, FUEL TANK, R	1	
5-2	44256H22500H000	SEPARATOR	5	
5-3	44256H40100H000	SEPARATOR	1	
5-4	68225H40120HT87	TAPE, FUEL TANK RIGHT COVER, NO. 1 (T87)	1	
5-4	68225H40120HT88	TAPE, FUEL TANK RIGHT COVER, NO. 1 (T88)	1	
5-4	68225H40120HT89	TAPE, FUEL TANK RIGHT COVER, NO. 1 (T89)	1	
5-5	68125H40130HT87	TAPE, FUEL TANK RIGHT COVER, NO. 2 (T87)	1	
5-5	68125H40130HT89	TAPE, FUEL TANK RIGHT COVER, NO. 2 (T89)	1	
6	44018H4010GHF01	COVER SET, FUEL TANK, L (BLACK)	1	
6	44018H4010GHF02	COVER SET, FUEL TANK, L (BLACK)	1	

4

Fig. 30

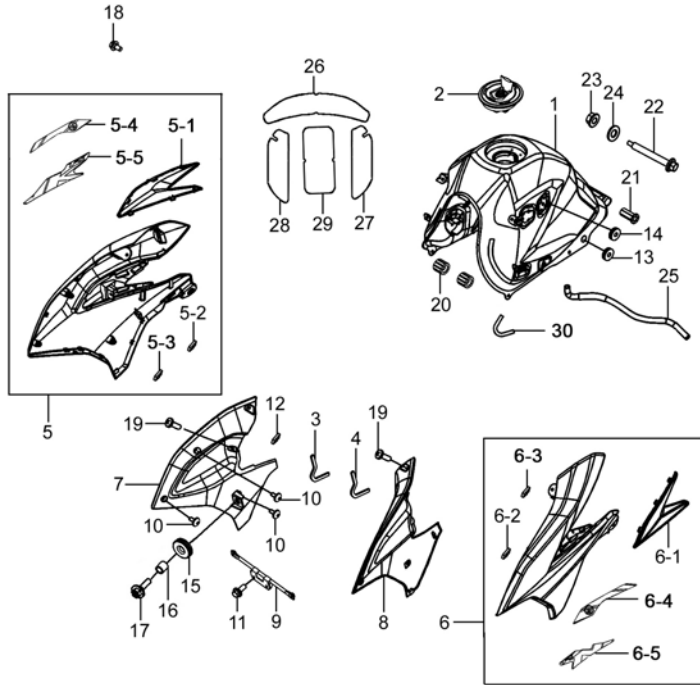


Fig.30 FUEL TANK (P12-S290-0010)

REF. No.	PART No.	DESCRIPTION	Q' TY	REMARKS
6	44018H4010GHF03	COVER SET, FUEL TANK, L (BLACK)	1	
6-1	44183H40100H000	SHIELD, FUEL TANK, L	1	
6-2	44256H22500H000	SEPARATOR	5	
6-3	44256H40100H000	SEPARATOR	1	
6-4	68226H40120HT87	TAPE, FUEL TANK LEFT COVER, NO. 1 (T87)	1	
6-4	68226H40120HT88	TAPE, FUEL TANK LEFT COVER, NO. 1 (T88)	1	
6-4	68226H40120HT89	TAPE, FUEL TANK LEFT COVER, NO. 1 (T89)	1	
6-5	68126H40130HT87	TAPE, FUEL TANK LEFT COVER, NO. 2 (T87)	1	
6-5	68126H40130HT89	TAPE, FUEL TANK LEFT COVER, NO. 2 (T89)	1	
7	44271H40100H000	COVER, FUEL TANK FRONT, R	1	
8	44281H40110H000	COVER, FUEL TANK FRONT L	1	
9	44130H40100H000	BRACKET COMP, FUEL TANK FRONT	1	
10	92125-33GC0-000	SCREW, LID INNER COVER	6	
11	01550-0612A-000	BOLT	2	
12	44256H22500H000	SEPARATOR	2	
13	47312H02100H000	RUBBER CUSHION	2	
14	09320H08005H000	CUSHION	2	
15	09320-09016-000	CUSHION, CYL COWLING	2	
16	09180-06263-000	SPACER, CYL COWLING (L9)	2	

4



Fig. 30

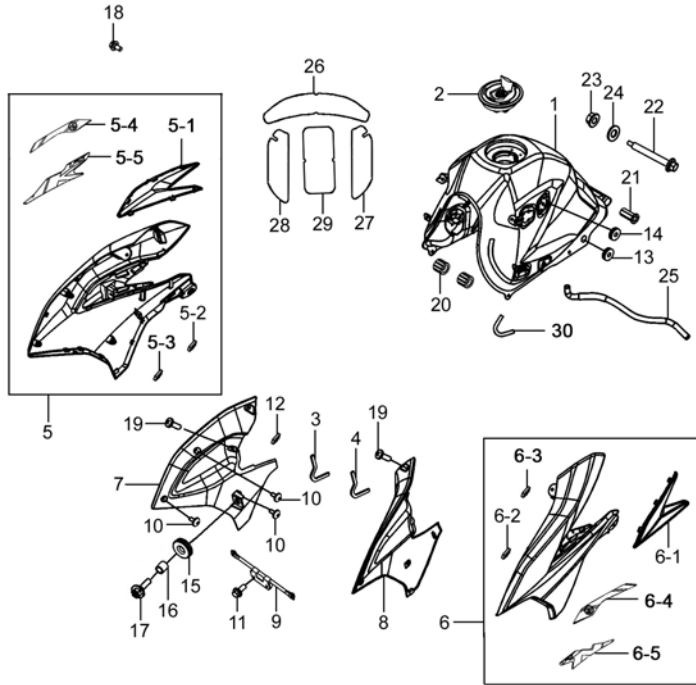


Fig.30 FUEL TANK (P12-S290-0010)

REF. No.	PART No.	DESCRIPTION	Q' TY	REMARKS
17	09116-06167-000	BOLT WITH WASHER	2	
18	09111-06106-000	BOLT	2	
19	02142-0514B-000	CROSS RECESSED HEAD SCREW	4	
20	44281H40100H000	CUSHION, FUEL TANK	2	
21	44542H40100H000	CUSHION, FUEL TANK REAR LOWER	2	
22	09111H06016H000	BOLT	1	
23	08316-1006A-000	NUT	1	
24	09160-06088-000	WASHER, REAR COMB LAMP	1	
25	44423H40101H000	HOSE, FUEL TANK WATER DRAIN	1	
26	44283H40101H000	PROTECTOR, FUEL TANK NO. 1	1	
27	44284H40101H000	PROTECTOR, FUEL TANK NO. 2	1	
28	44285H40101H000	PROTECTOR, FUEL TANK NO. 3	1	
29	44286H2F000H000	PROTECTOR, FUEL TANK NO. 4	2	
30	44259H40100H000	SEPARATOR	2	

4

Fig. 31

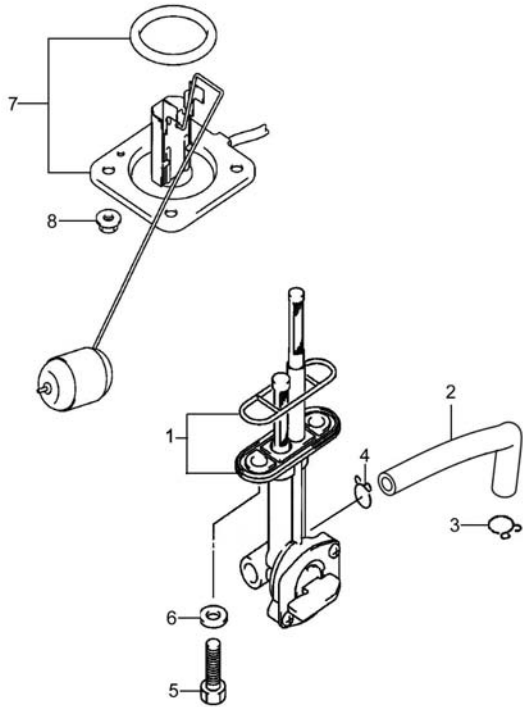


Fig.31 FUEL COCK (P12-S300-0002)

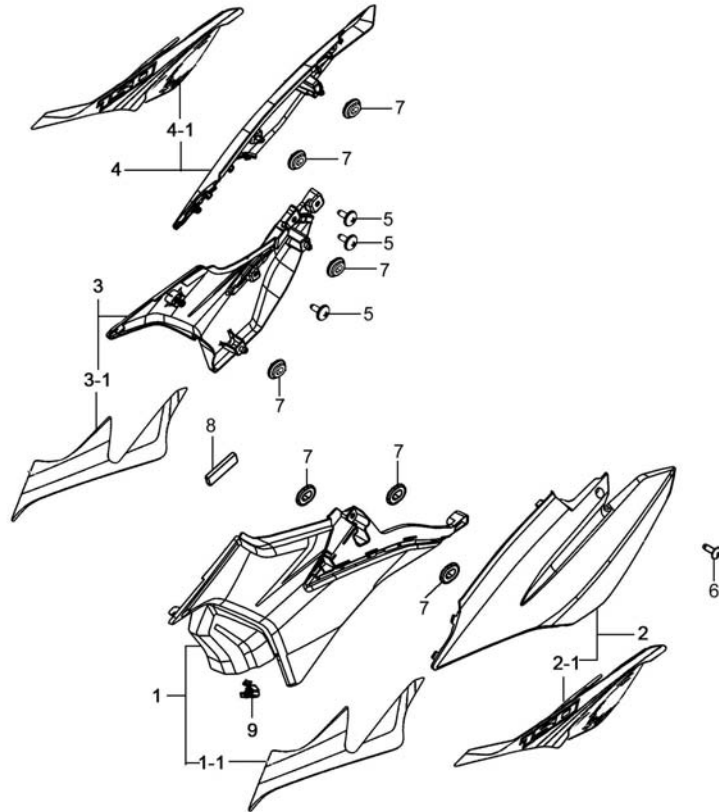
REF. No.	PART No.	DESCRIPTION	Q' TY	REMARKS
1	44300H2F300H000	COCK ASSY, FUEL	1	
2	44421H40000H000	HOSE, FUEL	1	
3	09401H08302H000	CLAMP	1	
4	09401-09101-000	CLAMP	1	
5	09128-06006-000	BOLT, FUEL COCK	2	
6	09168H06026H000	GASKET, FUEL COCK	2	
7	34810H40000H000	GAUGE ASSY, FUEL LEVEL SENDER	1	
8	08316-1006A-000	NUT	4	

4

Fig. 32

Fig.32 FRAME COVER (P12-S310-0010)

REF. No.	PART No.	DESCRIPTION	Q' TY	REMARKS
1	47021H40100HF01	COVER SET, FRAME, L (BLACK)	1	
1	47021H40100HF02	COVER SET, FRAME, L (BLACK)	1	
1	47021H40100HF03	COVER SET, FRAME, L (BLACK)	1	
1-1	68142H40120HT87	TAPE, FRAME COVER, L (T87)	1	
1-1	68142H40120HT88	TAPE, FRAME COVER, L (T88)	1	
1-1	68142H40120HT89	TAPE, FRAME COVER, L (T89)	1	
2	47022H40100HF01	LID SET, FRAME COVER, L (RED)	1	
2	47022H40100HF02	LID SET, FRAME COVER, L (BLACK)	1	
2	47022H40100HF03	LID SET, FRAME COVER, L (WHITE)	1	
2-1	68167H40120HT87	TAPE, TAIL COVER, L (T87)	1	
2-1	68167H40120HT88	TAPE, TAIL COVER, L (T88)	1	
2-1	68167H40120HT89	TAPE, TAIL COVER, L (T89)	1	
3	47011H4010AHF01	COVER SET, FRAME, R (BLACK)	1	
3	47011H4010AHF02	COVER SET, FRAME, R (BLACK)	1	
3	47011H4010AHF03	COVER SET, FRAME, R (BLACK)	1	
3-1	68132H40120HT87	TAPE, FRAME COVER, R (T87)	1	
3-1	68132H40120HT88	TAPE, FRAME COVER, R (T88)	1	
3-1	68132H40120HT89	TAPE, FRAME COVER, R (T89)	1	
4	47012H40100HF01	LID SET, FRAME COVER, R (RED)	1	
4	47012H40100HF02	LID SET, FRAME COVER, R (BLACK)	1	
4	47012H40100HF03	LID SET, FRAME COVER, R (WHITE)	1	
4-1	68165H40120HT87	TAPE, TAIL COVER, R (T87)	1	
4-1	68165H40120HT88	TAPE, TAIL COVER, R (T88)	1	
4-1	68165H40120HT89	TAPE, TAIL COVER, R (T89)	1	
5	92125-33GC0-000	SCREW, LID INNER COVER	6	
6	03241-0516B-000	SCREW	2	
7	47312H02100H000	RUBBER CUSHION	7	
8	47846H40100H000	CUSHION	2	
9	48291-32GH0-000	CLIP	1	

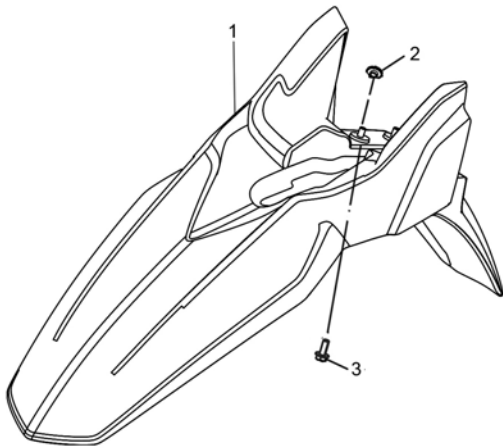


4

Fig. 33

Fig.33 FRONT FENDER (P12-S320-0002)

REF. No.	PART No.	DESCRIPTION	Q' TY	REMARKS
1	53111H40100H135	FENDER, FRONT (RED)	1	
1	53111H40100H521	FENDER, FRONT (BLACK)	1	
1	53111H40100H913	FENDER, FRONT (WHITE)	1	
2	09180H06033H000	SPACER	4	
3	09116-06167-000	BOLT WITH WASHER	4	



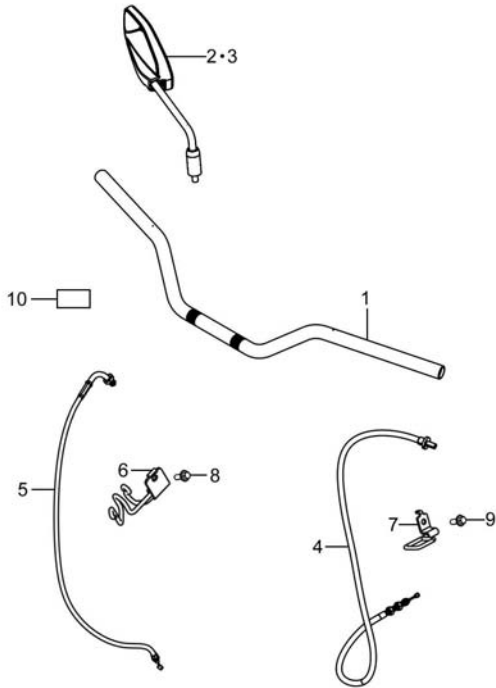
4



Fig. 34

Fig.34 HANDLEBAR (P12-S330-0006)

REF. No.	PART No.	DESCRIPTION	Q' TY	REMARKS
1	56110H40102H000	HANDLEBAR COMP	1	
2	56500H2A230H000	MIRROR ASSY, REAR VIEW, R	1	
3	56600H2A230H000	MIRROR ASSY, REAR VIEW, L	1	
4	58200H40101H000	CABLE ASSY, CLUTCH	1	
5	58300H40010H000	CABLE ASSY, THROTTLE	1	
6	58620H40000H000	GUIDE COMP, CABLE	1	
7	58620H40110H000	GUIDE COMP, CABLE	1	
8	01550-0610A-000	BOLTS, HEXAGON HEAD FLANGE	1	
9	01550-0612A-000	BOLT	1	
10	44256H56010H000	SEPARATOR	1	



4



Fig. 35

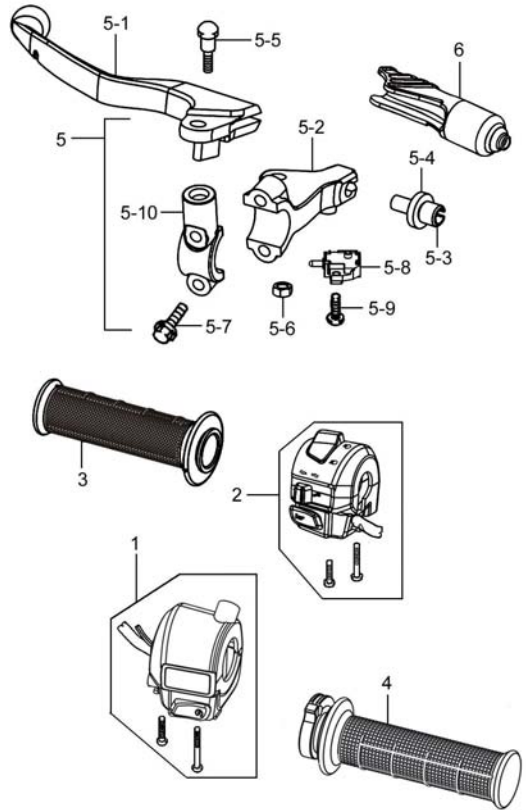


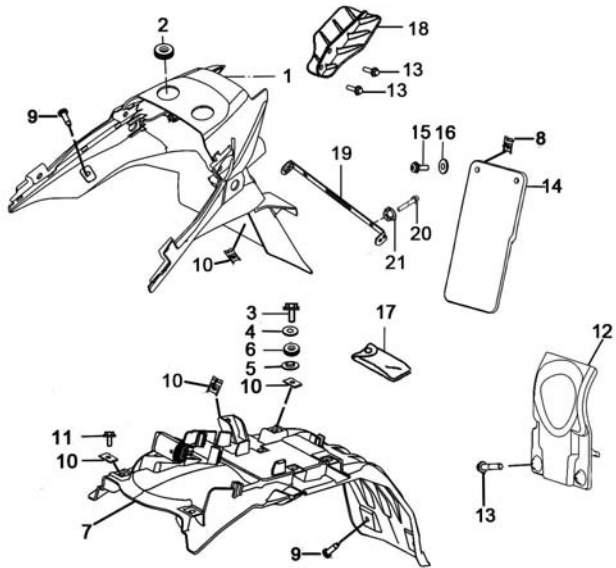
Fig.35 HANDLE SWITCH (P12-S340-0008)

REF. No.	PART No.	DESCRIPTION	Q' TY	REMARKS
1	37200H40000H000	SWITCH ASSY, HANDLE, R	1	
2	37400H40100H000	SWITCH ASSY, HANDLE, L	1	
3	57211H40100H000	GRIP, L	1	
4	57110H40001H000	GRIP COMP, THROTTLE	1	
5	57500H2J000H000	LEVER ASSY, CLUTCH & SWITCH	1	
5-1	57621H2J000H000	LEVER, CLUTCH	1	
5-2	57511H2J000H000	HOLDER, LEVER	1	
5-3	57441H2J000H000	ADJUSTER, WIRE	1	
5-4	57442-45C00-000	NUT, CABLE ADJUSTER	1	
5-5	57431-45C01-000	BOLT, LEVER	1	
5-6	08319-2106B-000	U-NUT	1	
5-7	01547-0628B-000	BOLTS, HEXAGON HEAD FLANGE	2	
5-8	57560-28G11-000	SWITCH ASSY, CLUTCH	1	
5-9	02112-0410B-000	CROSS RECESSED HEAD SCREW	1	
5-10	59671H2G100H000	HOLDER	1	
6	57661H2C100H000	COVER, CLUTCH LEVER	1	

4

Fig. 36

Fig.36 REAR FENDER (P12-S350-0005)



REF. No.	PART No.	DESCRIPTION	Q' TY	REMARKS
1	63111H40100H000	FENDER, REAR	1	
2	09320H20002H000	CUSHION	2	
3	01550-0625A-000	BOLT	2	
4	09160-06006-000	WASHER	2	
5	09180H06008H000	SPACER	2	
6	09320H08005H000	CUSHION	2	
7	63112H40000H000	BODY, REAR FENDER, FRONT	1	
8	09148-05077-000	NUT	2	
9	09139H06001H000	SCREW	4	
10	35157H22501H000	NUT	8	
11	01550-0616A-000	BOLT	2	
12	63121H40100H000	COVER, REAR FENDER	1	
13	09111-06061-000	SCREW, FRONT FENDER	4	
14	63113H40100H000	MUDGUARD, REAR FENDER	1	
15	03241-0516A-000	CROSS RECESSED HEAD TAPPING SCREW	2	
16	09160-05501-000	WASHER, PLAIN	2	
17	09800H20025H000	TOOL ASSY	1	
18	63125H40000H000	SHIELD, REAR FENDER	1	
19	35927H40000H000	BRACKET, LICENSE PLATE	1	
20	01550-0612A-000	BOLT	2	
21	08316-1006A-000	NUT	2	

4

Fig. 37

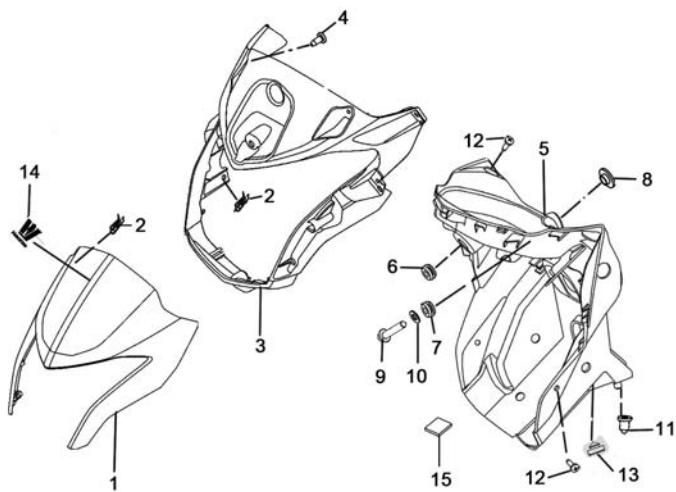


Fig.37 COWLING (P12-S360-0003)

REF. No.	PART No.	DESCRIPTION	Q' TY	REMARKS
1	94414H40100H521	PANEL, COWLING (BLACK)	1	
2	09148-05077-000	NUT	4	
3	94411H40100H000	BODY, COWLING	1	
4	09136H04003H000	SCREW WITH WASHER	7	
5	56321H40101H000	COVER, HANDLE REAR	1	
6	35382-48H00-000	CUSHION, HEADLAMP	1	
7	09320H08001H000	CUSHION	2	
8	51544H2A200H000	SPACER	2	
9	01550-0625A-000	BOLT	2	
10	09160-06027-000	WASHER, CHAIN CASE FRONT	2	
11	51589H22500H000	RUBBER	2	
12	03241-0516B-000	SCREW	4	
13	09321H09002H000	CUSHION	2	
14	68170H40110HT87	EMBLEM, LOGO (T87)	1	
15	44256H22500H000	SEPARATOR	5	

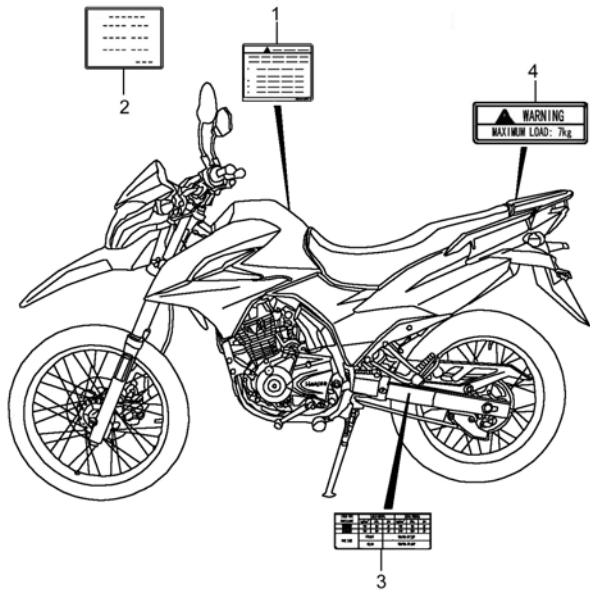
4



Fig. 38

Fig.38 LABEL (P12-S370-0011)

REF. No.	PART No.	DESCRIPTION	Q' TY	REMARKS
1	68319H22510H000	LABEL, GENERAL WARNING	1	
2	99011H40002H000	MANUAL, OWNER'S	1	
3	68332H40120H000	LABEL, TIRE INFORMATION	1	
4	68391H40000H000	LABEL, LOADING CAPACITY	1	



4

Fig. 39

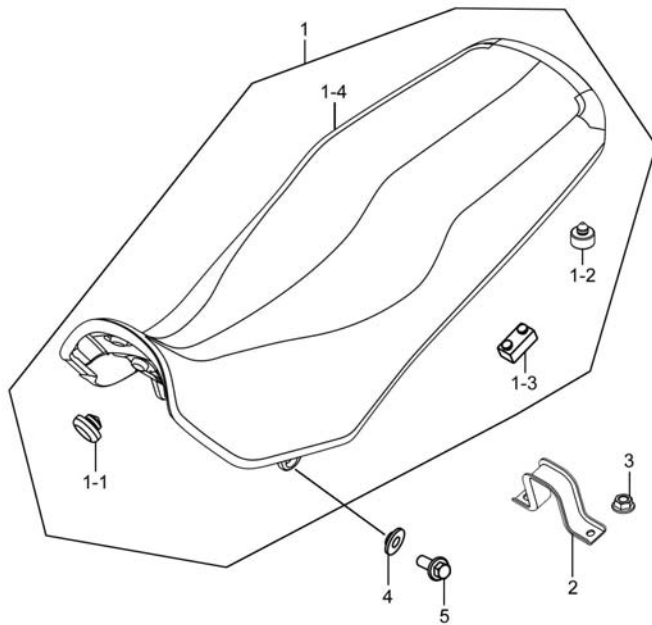


Fig.39 SEAT (P12-S380-0003)

REF. No.	PART No.	DESCRIPTION	Q' TY	REMARKS
1	45100H40100H000	SEAT ASSY	1	
1-1	09329-10001-000	CUSHION	4	
1-2	45148H52100H000	CUSHION, SEAT MOUNT	6	
1-3	45149H22500H000	CUSHION, SEAT MOUNT CTR	4	
1-4	45160H40100H000	COVER COMP, SEAT	1	
2	45315H40100H000	PLATE, SEAT STOPPER, RR	1	
3	08319-3106A-000	U-NUT	2	
4	45219-29J00-000	SPACER, SEAT	2	
5	01550-0820A-000	BOLTS, HEXAGON HEAD FLANGE	2	

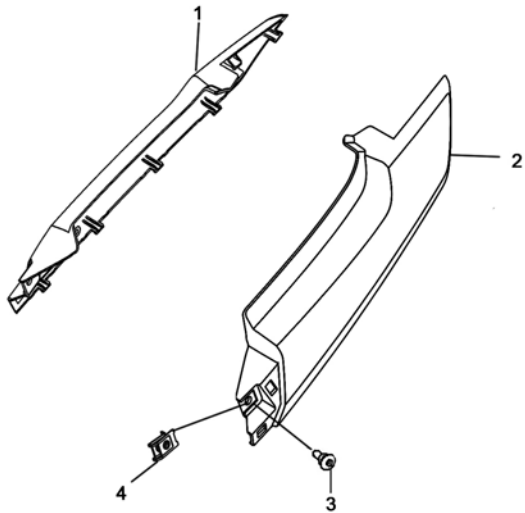
4



Fig. 40

Fig.40 COVER,SEAT TAIL (P12-S390-0003)

REF. No.	PART No.	DESCRIPTION	Q' TY	REMARKS
1	45511H40100H135	COVER, SEAT TAIL, R (RED)	1	
1	45511H40100H521	COVER, SEAT TAIL, R (BLACK)	1	
1	45511H40100H913	COVER, SEAT TAIL, R (WHITE)	1	
2	45512H40100H135	COVER, SEAT TAIL, L (RED)	1	
2	45512H40100H521	COVER, SEAT TAIL, L (BLACK)	1	
2	45512H40100H913	COVER, SEAT TAIL, L (WHITE)	1	
3	92125-33GC0-000	SCREW, LID INNER COVER	4	
4	09148-05077-000	NUT	2	



4

Fig. 41

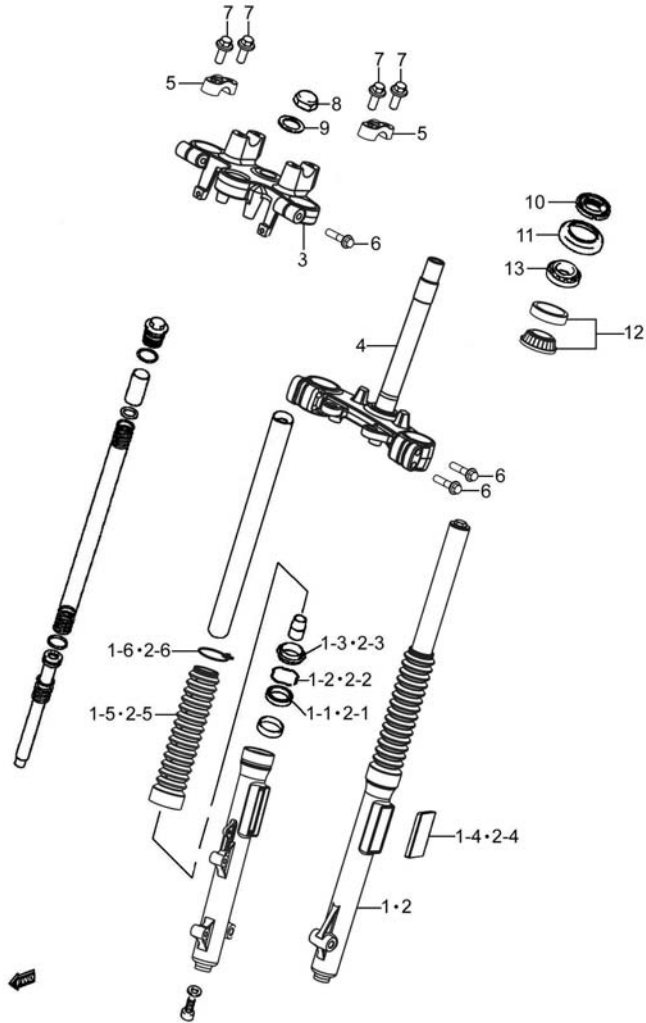


Fig.41 STEERING STEM (P12-S400-0005)

REF. No.	PART No.	DESCRIPTION	Q'TY	REMARKS
1	51103H40121H000	DAMPER ASSY, FRONT FORK, R	1	
1-1	51153H40100H000	SEAL, OIL	1	
1-2	51156-12FH0-000	RING, SNAP	1	
1-3	51173H40100H000	COVER, DUST SEAL	1	
1-4	35950H2F000H000	REFLEX REFLECTOR ASSY, FR SIDE	1	
1-5	51175H40110H000	SEAL, DUST	1	
1-6	51174H40110H000	BAND, BOOT	1	
2	51104H40120H000	DAMPER ASSY, FRONT FORK, L	1	
2-1	51153H40100H000	SEAL, OIL	1	
2-2	51156-12FH0-000	RING, SNAP	1	
2-3	51173H40100H000	COVER, DUST SEAL	1	
2-4	35950H2F000H000	REFLEX REFLECTOR ASSY, FR SIDE	1	
2-5	51175H40110H000	SEAL, DUST	1	
2-6	51174H40110H000	BAND, BOOT	1	
3	51311H40101H000	BRACKET, UPPER	1	
4	51410H40100H000	BRACKET COMP, UNDER	1	
5	56211H40101H000	HOLDER, HANDLE UPPER	2	
6	09103H08021H000	BOLT	6	
7	01550-0835A-000	BOLT	4	
8	51353H11200H000	NUT	1	
9	09160H22002H000	WASHER, PLAIN	1	
10	51631-48H00-000	NUT, STEERING STEM	1	
11	51643H40100H000	SEAL, STEERING DUST UPPER	1	
12	09265H25002H000	BEARING, ROLLER	1	
13	09267-25L01-000	BEARING	1	

4

Fig. 42

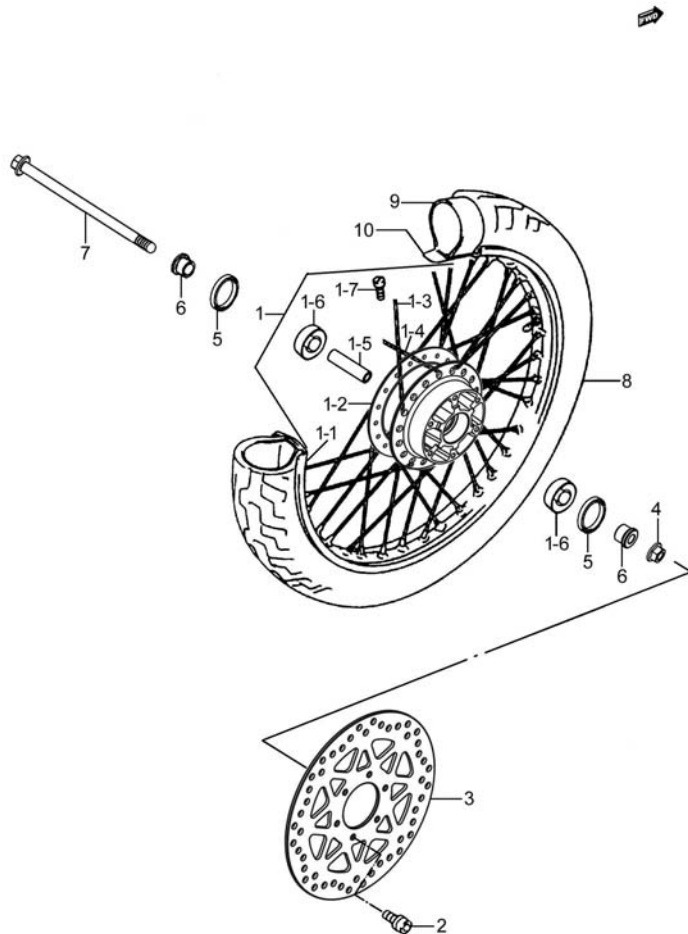


Fig.42 FRONT WHEEL (P12-S410-0003)

REF. No.	PART No.	DESCRIPTION	Q' TY	REMARKS
1	55033H40100H000	RIM SET, FRONT WHEEL	1	
1-1	55311H40100H000	RIM, FR WHEEL	1	
1-2	54111H40100H000	HUB, FRONT WHEEL	1	
1-3	55322H40100H000	SPOKE, FRONT WHEEL OUTER	18	
1-4	55321H40100H000	SPOKE, FRONT WHEEL INNER	18	
1-5	54731H40100H000	SPACER, FRONT HUB BEARING	1	
1-6	08133-6301B-000	BALL BEARING	2	
1-7	55326-11200-000	NIPPLE, WHEEL SPOKE	36	
2	59421H40100H000	BOLT, FRONT BRAKE DISC	6	
3	59211H40100H000	DISC, FRONT BRAKE	1	
4	08319-3112A-000	U-NUT	1	
5	54742H2J000H000	SEAL, FRONT WHEEL BEARING	2	
6	54741H40100H000	SPACER, FRONT AXLE	2	
7	54711H40100H000	AXLE, FRONT	1	
8	55100H40100H000	TIRE SET, FR	1	
9	55200H40100H000	TUBE ASSY, WHEEL INNER	1	
10	55261H40100H000	PROTECTOR, WHEEL INNER TUBE	1	

4

Fig. 43

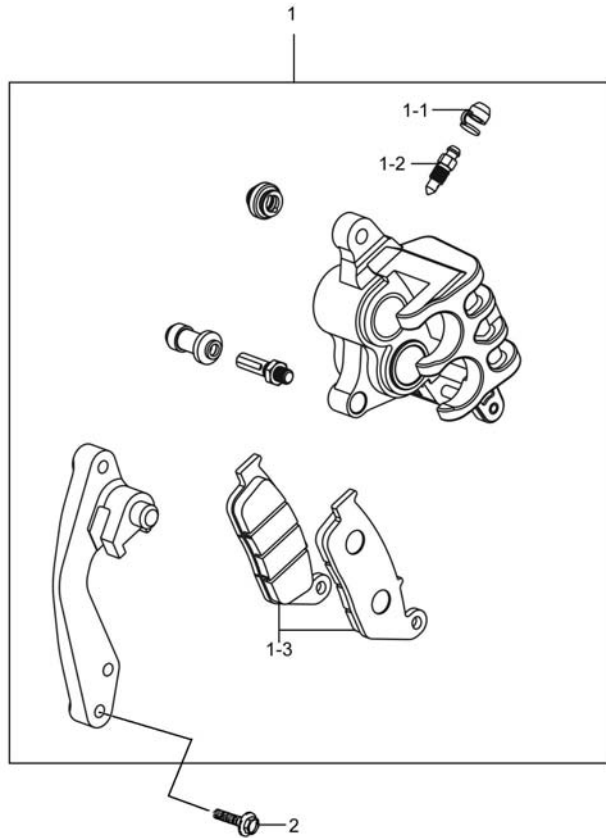


Fig.43 FRONT CALIPER (P12-S420-0003)

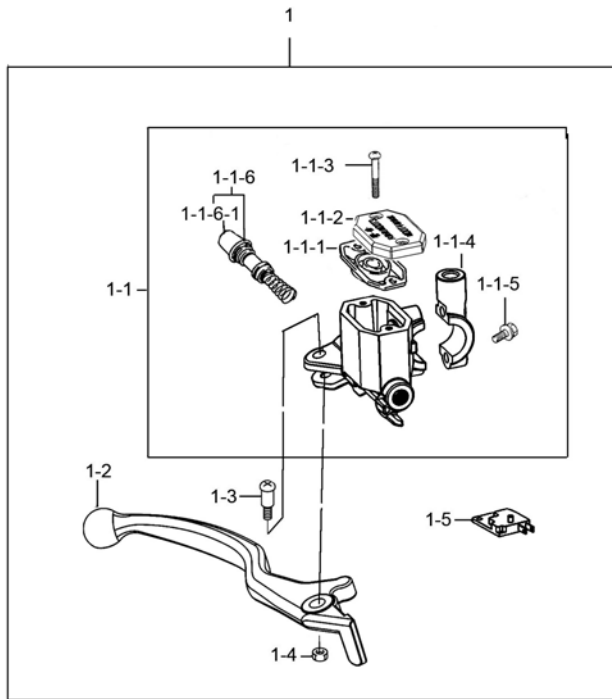
REF. No.	PART No.	DESCRIPTION	Q' TY	REMARKS
1	59300H40100H000	CALIPER ASSY, FRONT	1	
1-1	55156-26F10-000	CAP, BLEEDER	1	
1-2	59121-26F10-000	BLEEDER	1	
1-3	59300H2JY10H000	PAD COMP	1	
2	01550-0840A-000	BOLTS, HEXAGON HEAD FLANGE	2	

4

Fig. 44

Fig.44 FRONT BRAKE CYLINDER (P12-S430-0005)

REF. No.	PART No.	DESCRIPTION	Q' TY	REMARKS
1	59064H2G11AH000	CYLINDER SET, FRONT MASTER	1	
1-1	59600H2G110H000	CYLINDER ASSY, FRONT MASTER	1	
1-1-1	59667-053B0-000	DIAPHRAGM	1	
1-1-2	59669H2A030H000	CAP, RESERVOIR TANK	1	
1-1-3	59689H2A010H000	SCREW	2	
1-1-4	59671H2G100H000	HOLDER	1	
1-1-5	59675H2A000H000	BOLT	2	
1-1-6	59600H36810H000	PISTON/CUP SET	1	
1-1-6-1	59666-44300-000	BOOT	1	
1-2	57421H40100H000	LEVER, BRAKE, R	1	
1-3	57321-45F20-000	SCREW, BRAKE PIVOT	1	
1-4	57433-09F00-000	NUT, BRAKE LEVER PIVOT	1	
1-5	57460-17C11-000	SWITCH ASSY, STOP	1	



4



Fig. 45

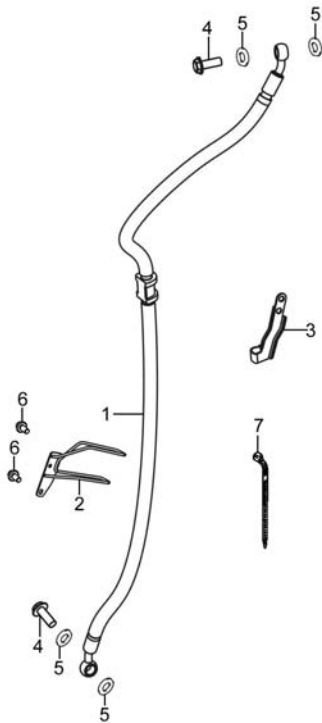


Fig.45 HOSE,FRONT BRAKE (P12-S435-0005)

REF. No.	PART No.	DESCRIPTION	Q' TY	REMARKS
1	59480H40100H000	HOSE COMP, FRONT BRAKE	1	
2	59246H40100H000	CLAMP, BRAKE HOSE	1	
3	59268H40110H000	CLAMP, BRAKE HOSE	1	
4	09360-10039-000	BOLT, BRAKE FLUID	2	
5	09161-10009-000	WASHER, BRAKE FLUID	4	
6	01550-0612A-000	BOLT	2	
7	09407-12402-000	CLAMP, WIRING HARNESS	1	

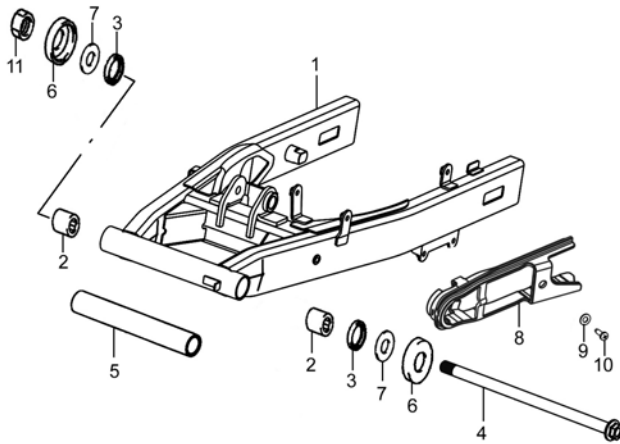
4



Fig. 46

Fig.46 REAR SWINGING ARM (P12-S440-0003)

REF. No.	PART No.	DESCRIPTION	Q' TY	REMARKS
1	61100H40101H000	SWINGINGARM COMP, REAR	1	
2	09263-20041-000	BEARING RR SWGARM PIVOT	2	
3	09285-20005-000	SEAL	2	
4	61211H37200H000	SHAFT, RR SWG ARM PIVOT	1	
5	61282H40101H000	SPACER, RR SWGARM PIVOT CENTER	1	
6	61262-05300-000	COVER, RR SWGARM PIVOT	2	
7	08211-14321-000	WASHER	2	
8	61273H40101H000	BUFFER, CHAIN TOUCH DEFENSE	1	
9	61275H40100H000	WASHER	1	
10	02112-0612A-000	SCREW	1	
11	08319-3114A-000	U-NUT	1	



4

Fig. 47

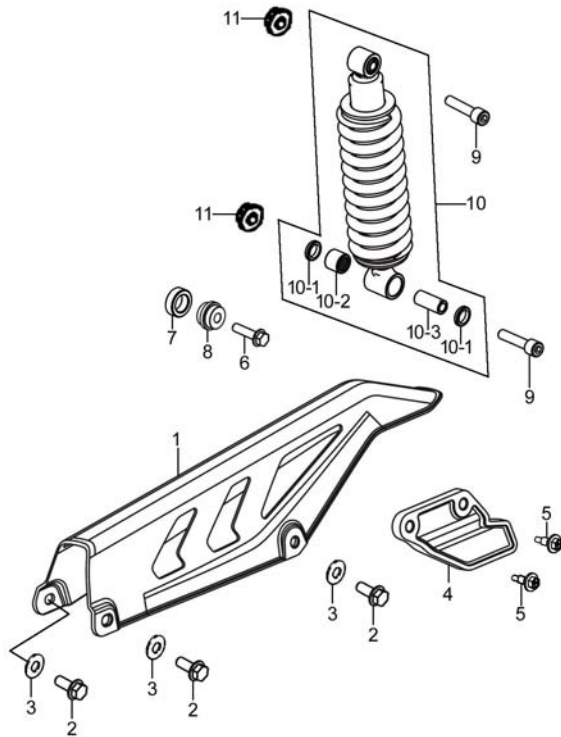


Fig.47 REARSHOCK ABSORBER (P12-S450-0005)

REF. No.	PART No.	DESCRIPTION	Q'TY	REMARKS
1	61311H40100H000	CASE, CHAIN	1	
2	01550-0612A-000	BOLT	3	
3	61315-45F00-000	WASHER, CHAIN CASE	3	
4	61149H40100H000	GUARD, CHAIN	1	
5	09111H06010H000	BOLT	2	
6	01550-0635A-000	BOLT	1	
7	09180H07005H000	SPACER	1	
8	09320H10004H000	RUBBER BUSH	1	
9	62313H40101H000	BOLT, RR SHOCK ABS LOWER	2	
10	62100H40112H000	ABSORBER ASSY, REAR SHOCK	1	
10-1	62129H40110H000	COVER, DUST SEAL	2	
10-2	62113H40110H000	BEARING	1	
10-3	62115H40101H000	BEARING PAD	1	
11	08319-3110A-000	NUT	2	

4



Fig. 48

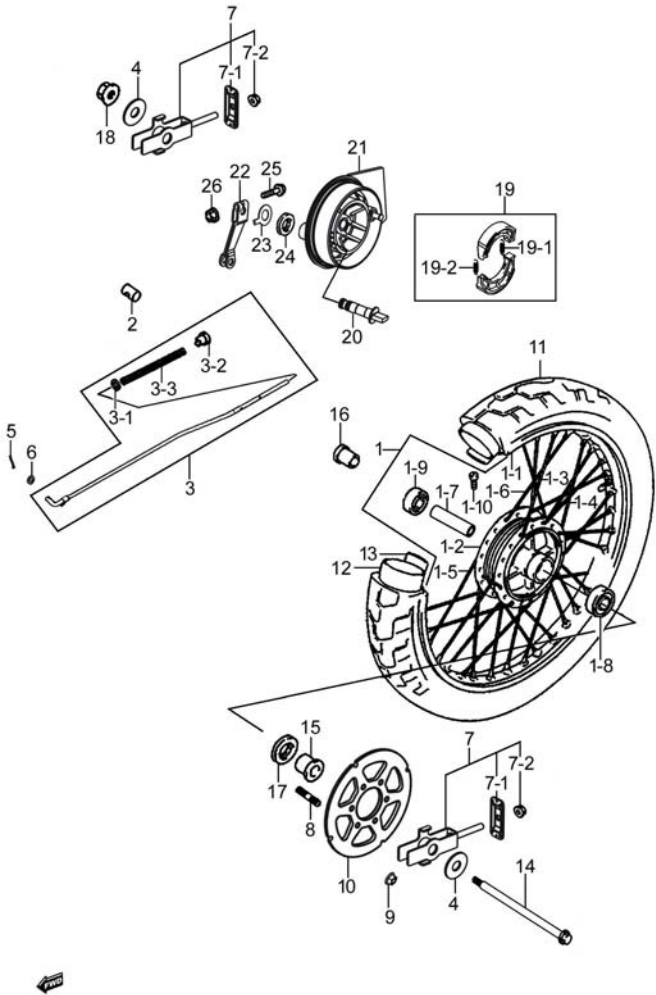


Fig.48 REAR WHEEL (P12-S460-0004)

REF. No.	PART No.	DESCRIPTION	Q' TY	REMARKS
1	65032H40100H000	RIM SET, REAR WHEEL	1	
1-1	65311H40100H000	RIM, RR WHEEL	1	
1-2	64110H40101H000	HUB COMP, REAR WHEEL	1	
1-3	65322H40100H000	SPOKE, REAR WHEEL OUTER	9	
1-4	65321H40100H000	SPOKE, WHEEL INNER	9	
1-5	65328H40100H000	SPOKE, REAR WHEEL OUTER No. 2	9	
1-6	65327H40100H000	SPOKE, REAR WHEEL INNER No. 2	9	
1-7	64731H40100H000	SPACER, REAR HUB BEARING	1	
1-8	08134-63027-000	BALL BEARING	1	
1-9	08133-62027-000	BALL BEARING	1	
1-10	55326-11200-000	NIPPLE, WHEEL SPOKE	36	
2	43321H11200H000	PIN	1	
3	43031H40108H000	ROD SET, REAR BRAKE	1	
3-1	08322-0106A-000	WASHER, PLAIN	1	
3-2	09150H06001H000	NUT	1	
3-3	09440H09007H000	SPRING, COMPRESSION	1	
4	64712H40100H000	WASHER, CHAIN ADJUSTER	2	
5	04111-2015A-000	COTTER PIN	1	
6	08322-0106A-000	WASHER, PLAIN	1	
7	61041H4010AH000	ADJUSTER SET, CHAIN	2	
7-1	61421H40101H000	PLATE, CHAIN ADJUSTER GUIDE	1	
7-2	08319-3108A-000	NUT	1	
8	64613H40100H000	BOLT, SPROCKET, REAR	6	
9	08319-3108A-000	NUT	6	
10	64511H40100H000	SPROCKET, REAR	1	
11	65100H40100H000	TIRE SET, RR	1	
12	65200H40100H000	TUBE ASSY, WHEEL INNER	1	
13	65261H40100H000	PROTECTOR, WHEEL INNER TUBE	1	
14	64711H40100H000	AXLE, REAR	1	

Fig. 48

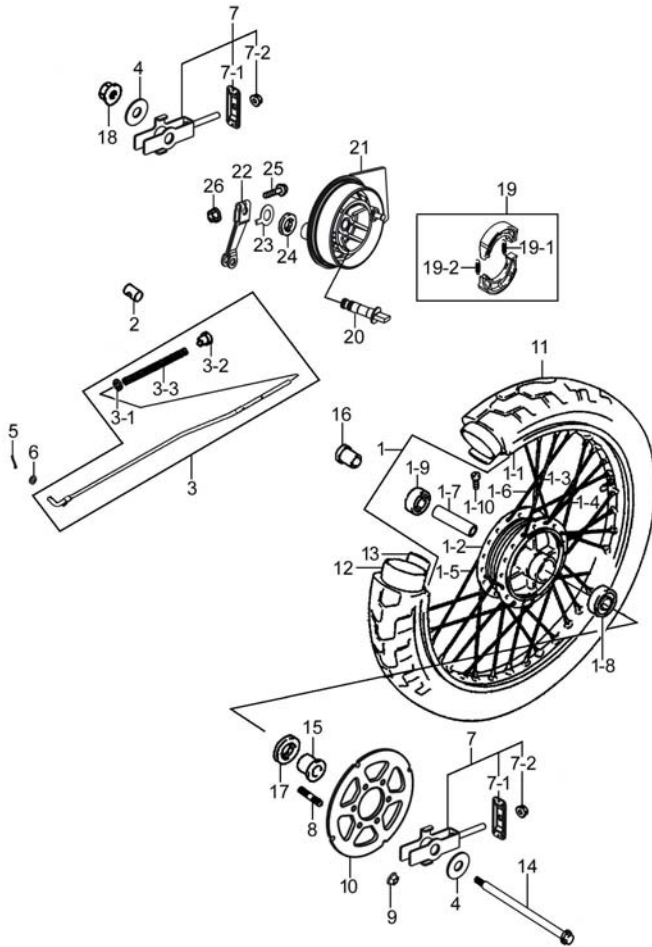


Fig.48 REAR WHEEL (P12-S460-0004)

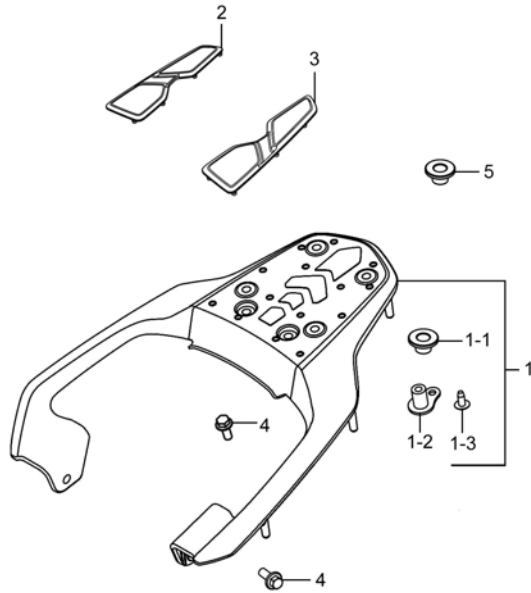
REF. No.	PART No.	DESCRIPTION	Q' TY	REMARKS
15	64751H40100H000	SPACER, REAR AXLE, L	1	
16	64741H40100H000	SPACER, REAR AXLE, R	1	
17	09283-25111-000	SEAL, OIL	1	
18	08319-3114A-000	U-NUT	1	
19	64410H40Y00H000	SHOE COMP, BRAKE	1	
19-1	55421H40100H000	SPRING, BRAKE SHOE	1	
19-2	55421H40110H000	SPRING, BRAKE SHOE	1	
20	54441H40110H000	CAM, BRAKE	1	
21	64210H40100H000	PANEL COMP, REAR BRAKE	1	
22	64451H40100H000	LEVER, REAR BRAKE CAM	1	
23	54492H40100H000	PLATE, FR BK LINING INDICATOR	1	
24	54443H85300H000	SEAL, BRAKE CAM DUST	2	
25	01550-0635A-000	BOLT	1	
26	08316-1006A-000	NUT	1	

4

Fig. 49

Fig.49 CARRIER (P12-S480-0004)

REF. No.	PART No.	DESCRIPTION	Q' TY	REMARKS
1	46310H40101H841	CARRIER COMP, REAR(841)	1	
1-1	46212H40101H000	COLLAR NO. 1	2	
1-2	14413H40100H000	SPACER	4	
1-3	03541-0512A-000	CROSS RECESSED HEAD TAPPING SCREW	4	
2	46313H40100H000	CUSHION, RR CARRIER, R	1	
3	46314H40100H000	CUSHION, RR CARRIER, L	1	
4	01550-0825A-000	BOLTS, HEXAGON HEAD FLANGE	4	
5	46212H40101H000	COLLAR NO. 1	2	



PART NO.	FIG. NO. – REF. NO.	PART NO.	FIG. NO. – REF. NO.	PART NO.	FIG. NO. – REF. NO.	PART NO.	FIG. NO. – REF. NO.
00000		01550-0612A-000	45-6	03541-0412A-000	23-5	08319-3108A-000	48-7-2
		01550-0612A-000	47-2	03541-0416A-000	22-1-4	08319-3108A-000	48-9
		01550-0616A-000	10-3	03541-0416A-000	26-7	08319-3110A-000	03-14
		01550-0616A-000	17-4	03541-0512A-000	49-1-3	08319-3110A-000	28-4
		01550-0616A-000	21-4	03541-0516A-000	10-9	08319-3110A-000	47-11
01500-0820A-000	16-18	01550-0616A-000	03-19	03541-0516A-000	22-6	08319-3112A-000	42-4
01500-0825A-000	17-6	01550-0616A-000	27-19	04111-2015A-000	48-5	08319-3114A-000	46-11
01547-0512A-000	01-13	01550-0616A-000	36-11	04111-2020A-000	29-6	08319-3114A-000	48-18
01547-0612A-000	12-23	01550-0622A-000	14-2-1	04111-2020A-000	29-7-6	08322-0106A-000	48-3-1
01547-0612A-000	01-10	01550-0625A-000	28-15	04111-2020A-000	29-8-6	08322-0106A-000	48-6
01547-0614A-000	07-5	01550-0625A-000	36-3	04111-2525A-000	28-13	08331-31149-000	16-14-2
01547-0616A-000	12-1	01550-0625A-000	37-9	07130-0512A-000	22-4	08331-31289-000	05-19-7
01547-0616A-000	03-6	01550-0635A-000	47-6	07130-0610A-000	15-10	08361-3506A-000	21-2
01547-0620A-000	08-9	01550-0635A-000	48-25	07130-0625A-000	19-3	09100H05005H000	19-2
01547-0620A-000	01-18	01550-0816A-000	27-10	07130-0825A-000	11-2	09100H06022H000	16-10
01547-0625A-000	08-6	01550-0820A-000	39-5	07130-0825A-000	22-8	09100H06022H000	16-13
01547-0625A-000	12-11	01550-0825A-000	29-9	08133-62027-000	48-1-9	09103-08530-000	03-15
01547-0628B-000	35-5-7	01550-0825A-000	49-4	08133-6301B-000	42-1-6	09103H05001H000	07-3
01547-0630A-000	13-2	01550-0830A-000	11-9	08134-63027-000	48-1-8	09103H06003H000	01-6
01547-0630A-000	18-2	01550-0835A-000	41-7	08211-06141-000	03-20	09103H06020H000	29-1-5
01547-0630A-000	04-5	01550-0840A-000	11-15	08211-14321-000	46-7	09103H06020H000	29-2-5
01547-0630A-000	01-9	01550-0840A-000	43-2	08310-0006A-000	01-22	09103H08010H000	03-16
01547-0635A-000	04-10	01550-0845A-000	11-5	08310-0006A-000	28-11	09103H08010H000	27-7
01547-0640A-000	03-2	01550-0875A-000	27-5	08310-0010A-000	24-3	09103H08012H000	27-16
01547-0640A-000	04-4	02112-0410B-000	35-5-9	08316-1006A-000	12-12	09103H08021H000	41-6
01547-0645A-000	03-3	02112-0418A-000	16-22	08316-1006A-000	30-23	09103H10003H000	03-13
01547-0645A-000	04-9	02112-0612A-000	46-10	08316-1006A-000	31-8	09108H06009H000	01-21
01547-0670A-000	03-4	02112-1520A-000	21-9	08316-1006A-000	36-21	09108H08021H000	02-4
01550-0610A-000	26-8	02122-0512A-000	05-16	08316-1006A-000	48-26	09111-06061-000	10-4
01550-0610A-000	34-8	02142-0512A-000	10-1-7	08316-1014A-000	19-4	09111-06061-000	36-13
01550-0612A-000	26-22	02142-0514B-000	30-19	08319-2106B-000	35-5-6	09111-06106-000	30-18
01550-0612A-000	27-13	02142-0516A-000	10-1-6	08319-3106A-000	39-3	09111H06010H000	47-5
01550-0612A-000	30-11	03241-0516A-000	36-15	08319-3108A-000	11-8	09111H06016H000	30-22
01550-0612A-000	34-9	03241-0516B-000	32-6	08319-3108A-000	03-17	09111H10009H000	28-3
01550-0612A-000	36-20	03241-0516B-000	37-12	08319-3108A-000	27-6	09116-06167-000	30-17

5

5

PART NO.	FIG. NO. – REF. NO.	PART NO.	FIG. NO. – REF. NO.	PART NO.	FIG. NO. – REF. NO.	PART NO.	FIG. NO. – REF. NO.
09116-06167-000	33-3	09160H17003H000	15-14	09206H08002H000	04-16	09320-08051-000	12-14
09125H06002H000	08-7-1	09160H20001H000	15-1-10	09206H08004H000	04-3	09320-09016-000	30-15
09128-06006-000	31-5	09160H20001H000	15-5-11	09206H10006H000	01-3	09320H08001H000	37-7
09136H04003H000	37-4	09160H22002H000	41-9	09206H10007H000	02-3	09320H08005H000	30-14
09136H06003H000	21-11	09161-10009-000	45-5	09206H10007H000	03-1-1	09320H08005H000	36-6
09139-06027-000	11-4-2	09161H06004H000	11-4-4	09229H03003H000	27-15	09320H10004H000	47-8
09139-06048-000	26-19	09164H10001H000	07-17	09241H08001H000	15-5-14	09320H10023H000	11-3-5
09139H06001H000	36-9	09168-06018-000	01-11	09247H12105H000	03-10	09320H12005H000	11-11
09139H06006H000	11-3-2	09168-12002-000	03-11	09259H32002H000	04-11	09320H20002H000	36-2
09148-05077-000	36-8	09168H06002H000	11-3-6	09261-02001-000	13-5	09321H09002H000	11-16
09148-05077-000	37-2	09168H06002H000	11-4-5	09262-20151-000	15-6	09321H09002H000	37-13
09148-05077-000	40-4	09168H06026H000	31-6	09262H12009H000	15-2	09329-10001-000	39-1-1
09150H06001H000	48-3-2	09180-06263-000	30-16	09262H12014H000	07-1-1	09360-10039-000	45-4
09159H14001H000	05-21	09180H06008H000	36-5	09262H15018H000	05-23	09380H15002H000	17-1-7
09160-05501-000	36-16	09180H06010H000	29-1-4	09262H17001H000	14-8	09380H16001H000	15-15
09160-06006-000	12-13	09180H06010H000	29-2-4	09262H17007H000	15-7	09380H18002H000	15-1-13
09160-06006-000	36-4	09180H06033H000	33-2	09262H17017H000	15-3	09380H18002H000	15-5-12
09160-06027-000	37-10	09180H06034H000	12-15	09263-20041-000	46-2	09381-14001-000	05-4
09160-06088-000	30-24	09180H06034H000	27-20	09264H30001H000	05-6	09383-05001-000	13-4
09160-06163-000	11-4-3	09180H06035H000	28-16	09265H25002H000	41-12	09401-08414-000	09-2
09160-06164-000	11-3-3	09180H06336H000	11-3-4	09267-25L01-000	41-13	09401-09101-000	31-4
09160-08153-000	29-5	09180H07005H000	47-7	09280-24003-000	18-1-4	09401-10410-000	09-3
09160-08153-000	29-7-5	09180H08015H000	11-12	09280-32006-000	04-12	09401-15404-000	12-8
09160-08153-000	29-8-5	09180H08026H000	27-17	09280H09011H000	08-7-2	09401-17401-000	12-9
09160H08008H000	11-17	09180H10002H000	06-3	09280H10002H000	12-2	09401H07201H000	12-5
09160H08017H000	11-10	09180H15019H000	05-24	09280H13010H000	04-14	09401H08302H000	31-3
09160H12014H000	15-1-11	09180H17005H000	14-3	09280H18002H000	04-18-1	09401H12302H000	12-21
09160H12016H000	01-5	09181H14004H000	16-14-3	09280H19001H000	16-21	09401H13002H000	12-18
09160H12021H000	07-16	09181H16001H000	07-15	09280H34002H000	01-17	09401H14302H000	10-1-5
09160H14006H000	17-1-2	09181H28001H000	05-19-4	09283-25111-000	48-17	09401H15202H000	10-7
09160H16001H000	17-1-5	09181H28004H000	05-19-6	09283H14003H000	16-16	09401H15202H000	12-20
09160H16004H000	05-18	09200-08002-000	29-7-4	09283H16001H000	17-2	09401H21401H000	10-1-2
09160H17001H000	28-12	09200-08002-000	29-8-4	09283H20013H000	15-4	09404-06030-000	26-6
09160H17002H000	15-1-12	09200H08004H000	29-4	09285-20005-000	46-3	09404-06429-000	26-9
09160H17002H000	15-5-13	09205H03001H000	04-21	09289H05004H000	07-14	09407-10404-000	26-14

PART NO.	FIG. NO. – REF. NO.	PART NO.	FIG. NO. – REF. NO.	PART NO.	FIG. NO. – REF. NO.	PART NO.	FIG. NO. – REF. NO.
09407-12402-000	26-4	11171H2J021H000	01-7	12760H3J010H000	08-1	13383H40010H000	09-1-2
09407-12402-000	45-7	11173H3J011H000	01-8	12771H3J000H000	08-3	13385H12600H000	09-1-6
09420H04002H000	05-5-1	11184H3J000H000	01-14	12811H3J010H000	08-2	13388H12600H000	09-1-20
09420H04005H000	05-13	11210H3J0B0H0A0	02-1	12830H3JY01H000	08-7	13389H12600H000	09-1-3
09421H04001H000	05-12	11241H3J010H000	02-2	12837H21D20H000	08-8	13389H12610H000	09-1-17
09440H04030H000	16-6	11300H3JY12H000	03-1	12840H3J001H000	07-6	13413H40010H000	09-1-18
09440H07004H000	05-19-3	11327H3J000H000	08-5	12842H3J000H000	07-6-1	13551H40010H000	09-1-1
09440H09007H000	48-3-3	11327H3J010H000	08-4	12852H33000H000	07-6-2	13573H12600H000	09-1-4
09443H08001H000	28-8	11340H3J020H000	04-1	12861H3J000H000	07-7	13683H12601H000	09-4
09443H14004H000	28-6	11351H3J010H000	04-7	12911H3J010H000	07-8	13687H40010H000	09-6
09448H14005H000	29-3	11353H3J010H000	04-13	12912H3J030H000	07-9	13688H12601H000	09-7
09448H15001H000	04-20	11361H3J010H000	04-15	12921H3R000H000	07-12	13700H40000H000	10-1
09471-12081-000	23-1-5	11362H3J010H000	04-17	12922H3R000H000	07-13	13723H40100H000	10-1-13
09471-12128-000	25-1-3	11421H3R000H000	04-6	12931H3R000H000	07-10	13724H40100H000	10-1-11
09471H12001H000	23-1-4	11482H3J010H000	04-2	12932H50100H000	07-11	13741H40000H000	10-1-14
09471H12019H000	24-1-2	11483H3J010H000	04-8	13110H40000H000	01-16	13766H40100H000	10-8
09471H12019H000	24-2-2	12111H3J000H0A0	05-1	13112H3J010H000	01-19	13781H40100H000	10-1-8
09471H12019H000	24-5-2	12140H3E010H000	05-2	13113H3E001H000	01-20	13787H40100H000	10-5
09471H12019H000	24-6-2	12151H3J000H000	05-3	13170H2G002H000	10-1-3	13810H40100H000	10-1-12
09482H00010H000	01-15	12200H3J002H000	05-5	13200H40010H000	09-1	13851H40100H000	10-6
09491H20040H000	09-1-7	12543H3J000H000	03-7	13241H12600H000	09-1-5	13878H52100H000	10-1-4
09492H38040H000	09-1-8	12544H3J000H000	03-8	13247H12600H000	09-1-16	13886H40000H000	10-1-1
09800H20025H000	36-17	12545H3J010H000	03-9	13250H12600H000	09-1-13	13891H40000H000	10-1-9
		12547H3J000H000	03-5	13251H12600H000	09-1-15	13898H40100H000	10-1-10
		12611H3J000H000	06-2	13253H12600H000	09-1-19	14015H40001H000	11-4
		12620H3J000H000	06-1	13254H12600H000	09-1-14	14031H40000H000	11-3
		12651H3J020H000	05-22	13261H12600H000	09-1-22	14181H11200H000	11-1
		12661H3J001H000	05-7	13267H40010H000	09-1-24	14412H40100H000	11-6
		12670H3J000H000	05-19	13268H12600H000	09-1-10	14413H40100H000	49-1-2
		12679H3J000H000	05-19-1	13279H40010H000	09-1-9	14414H40100H000	11-7
11091H3J010H000	04-18	12683H36000H000	06-4	13286H40010H000	09-5	14459H40100H000	11-14
11110H3J0H0H000	01-1	12686H3J000H000	05-19-2	13295H12600H000	09-1-12	14771H40100H000	11-13
11121H3J020H000	01-12	12687H3J000H000	05-19-5	13346H40010H000	09-1-21	14781H40100H000	11-4-1
11141H3J010H000	01-2	12710H3J053H000	07-1	13370H40010H000	09-1-23	14791H40100H000	11-3-1
11151H3J010H000	01-4	12741H3J000H000	07-2	13382H12600H000	09-1-11	14793H40100H000	11-3-7

5

5

PART NO.	FIG. NO. – REF. NO.	PART NO.	FIG. NO. – REF. NO.	PART NO.	FIG. NO. – REF. NO.	PART NO.	FIG. NO. – REF. NO.
16052H3D010H000	05-14	21410H3J030H000	14-2	24741H3J000H000	03-18	31100H3J022H000	18-1
16330H3J010H000	13-3	21411H3G000H000	14-2-8	25211H3J000H000	16-1	31133H3J000H000	18-1-1-1
16400H3J000H000	13-1	21413H3D010H000	14-2-3	25231H3J000H000	16-2	31135-05530-000	18-1-1-2
16422-20E00-000	13-6	21441H36030H000	14-2-5	25311H3J000H000	16-5	31153H3J000H000	18-1-3
16514H3D000H000	05-14-1	21441H3J000H000	14-2-6	25314H3E000H000	16-7	31156-05530-000	18-1-7
16520-09410-000	03-12	21451H3E010H000	14-2-7	25335H3J000H000	16-9	31175H3J001H000	18-1-1
16520H33040H000	05-14-2	21462H3E000H000	14-2-4	25350H3J000H000	16-11	31264-05530-000	18-1-5
16521H33040H000	05-14-2-2	21471H3G000H000	14-2-2	25351H3J000H000	16-12	31281H3J000H000	18-1-6
16531H33040H000	05-14-2-4	21481H3J000H000	14-5	25380H3J000H000	16-8	31800H73101H000	21-1
16532H33040H000	05-14-2-1	23131H3J010H000	14-9	25411H3J000H000	16-3	32100H3J000H000	19-1
16551H33040H000	05-14-2-3	23270H3J010H000	04-19	25421H3J000H000	16-4	32101H3J000H000	19-1-1
16561H3E000H000	05-15	23285H35010H000	04-22	25500H3J000H000	16-14	32102H3J000H000	19-1-2
18410H40000H000	12-3	24102H3J020H000	15-1	25518H3J000H000	16-14-1	32115H3J010H000	19-5
18450H2G110H000	12-6	24103H3J010H000	15-5	25600H40100H000	16-17	32800H51001H000	21-3
18461H40000H000	12-10	24121H3J010H000	15-1-1	25652-20C00-000	16-17-1	32831H40100H000	21-5
18463H40000H000	12-4	24125H3J000H000	15-1-2	25671H3J000H000	16-15	32900H40000H000	21-6
18610H40000H000	12-7	24131H3R000H000	15-5-1	26210H3J000H000	17-1	33410H40000H000	21-8
18711H40000H000	12-22	24221H3J010H000	15-1-3	26211H3J000H000	17-1-1	33414H40000H000	21-10
18712H40000H000	12-19	24231H3J010H000	15-1-4	26212H3J000H000	17-1-8	33510H33811H000	21-8-1
18715H40000H000	12-17	24232H3J000H000	15-1-9	26221H3J000H000	17-1-9	33541-38210-000	21-8-2
20000		24232H3J000H000	15-5-10	26226H3J000H000	17-1-3	33542H05500H000	21-8-3
		24241H3J020H000	15-1-5	26241H3J000H000	17-1-6	33620H2C010H000	20-1
		24242H3J000H000	15-1-6	26251H3J000H000	17-1-4	33810H3J020H000	18-1-2
		24251H3J020H000	15-1-7	26256H3J000H000	17-3	33860H40100H000	20-2
		24252H3J000H000	15-1-8	26261H3J000H000	15-12	34100H40000H000	22-1
21111H3J020H000	05-11	24311H3J010H000	15-5-2	26300H40100H000	17-5	34111H40100H000	22-1-2
21112H3J000H000	05-9	24312H3J000H000	15-5-3	26352-01000-000	17-5-1	34124H37200H000	22-1-3
21113H3J000H000	05-8	24312H3J000H000	15-13	27511H3J000H000	15-8	34150H40100H000	22-1-1
21114H3J010H000	05-10	24321H3J010H000	15-5-4	27521H33010H000	15-9	34810H40000H000	31-7
21200H3J040H000	14-1	24322H3J000H000	15-5-5	27600H3R000H130	15-11	34981-26H00-000	22-7
21251H3J000H000	14-4	24331H3J010H000	15-5-6	30000		34990H2A410H000	22-3
21324H3J000H000	05-20	24332H3J000H000	15-5-7			34997H40100H000	22-5
21324H3J000H000	14-6	24341H3J010H000	15-5-8			35100H40100H000	23-1
21346H33000H000	05-17	24351H3J010H000	15-5-9			35121H40100H000	23-1-1
21346H3J000H000	14-7	24741-20A10-000	07-4			35151-21J00-000	22-2

PART NO.	FIG. NO. – REF. NO.	PART NO.	FIG. NO. – REF. NO.	PART NO.	FIG. NO. – REF. NO.	PART NO.	FIG. NO. – REF. NO.
35151H40100H000	23-2	36651-26H10-000	26-13	43159-45F00-000	28-10	44256H22500H000	30-6-2
35154H40100H000	23-3	36651-26H50-000	26-5	43321H11200H000	48-2	44256H22500H000	30-12
35157H22501H000	10-2	36720H2C100H000	26-1-1	43501H40102H000	29-1	44256H22500H000	37-15
35157H22501H000	21-7	36990-32G10-000	26-3	43502H40102H000	29-2	44256H40100H000	30-5-3
35157H22501H000	36-10	36990-32G20-000	26-2	43510H40101H000	29-1-1	44256H40100H000	30-6-3
35171H40100H000	23-1-3	36990-32G30-000	26-17	43520H40101H000	29-2-1	44256H56010H000	34-10
35174H7J000H000	23-1-2	37011H2F00BH000	26-23	43551H40100H000	29-1-2	44259H40100H000	30-30
35194H40100H000	23-4	37100H2F030H000	26-18	43551H40100H000	29-2-2	44262H40100H000	30-4
35382-48H00-000	37-6	37200H40000H000	35-1	43581H40100H000	29-1-3	44271H40100H000	30-7
35601H40100H000	24-1	37400H40100H000	35-2	43581H40100H000	29-2-3	44281H40100H000	30-20
35602H40100H000	24-2	37720H3J010H000	16-19	43600H40100H000	29-7	44281H40110H000	30-8
35603H2C000H000	24-5	37725H3J000H000	16-20	43610H40100H000	29-7-2	44283H40101H000	30-26
35604H2C000H000	24-6	37740H40000H000	26-20	43612H40100H000	29-7-3	44284H40101H000	30-27
35610H2C000H000	24-1-1	38500H2H000H000	26-21	43620H40100H000	29-7-1	44285H40101H000	30-28
35610H2C000H000	24-6-1	38610H11222H000	24-8	43631H40100H000	29-7-7	44286H2F000H000	30-29
35616H11A01H000	24-4			43631H40100H000	29-8-7	44300H2F300H000	31-1
35616H40100H000	24-7			43700H40100H000	29-8	44330H12900H000	12-16
35630H2C000H000	24-2-1	40000		43710H40100H000	29-8-2	44421H40000H000	31-2
35630H2C000H000	24-5-1			43712H40100H000	29-8-3	44423H40101H000	30-25
35710H40100H000	25-1			43720H40100H000	29-8-1	44542H40100H000	30-21
35718H40100H000	25-1-2		41100H40000H000	27-1	44011H40000HF04	30-1	45100H40100H000
35720H40100H000	25-1-1	41540H40100H000	27-11	44011H40000HF05	30-1	45148H52100H000	39-1-2
35910H40102H000	25-3	41540H40110H000	27-12	44011H40000HF06	30-1	45149H22500H000	39-1-3
35927H40000H000	36-19	41762H40100H000	27-2	44017H4010GHF01	30-5	45160H40100H000	39-1-4
35950H05301H000	25-5	41941H40110H000	27-9	44017H4010GHF02	30-5	45219-29J00-000	39-4
35950H2F000H000	41-1-4	41970H40000H000	27-3	44017H4010GHF03	30-5	45315H40100H000	39-2
35950H2F000H000	41-2-4	41980H40100H000	27-4	44018H4010GHF01	30-6	45511H40100H135	40-1
35970H2C001H000	25-4	41992H40100H000	27-8	44018H4010GHF02	30-6	45511H40100H521	40-1
36610H40001H000	26-1	42241H40100H000	28-2	44018H4010GHF03	30-6	45511H40100H913	40-1
36611H40100H000	26-16	42310H40100H000	28-1	44130H40100H000	30-9	45512H40100H135	40-2
36618H2A000H000	26-11	42336H40100H000	28-14	44162H40100H000	30-3	45512H40100H521	40-2
36618H2D000H000	26-12	43031H4010BH000	48-3	44173H40100H000	30-5-1	45512H40100H913	40-2
36618H79201H000	26-15	43110H40110H000	28-5	44183H40100H000	30-6-1	46212H40101H000	49-1-1
36651-12F10-000	26-10	43116H22500H000	28-9	44200H2C100H000	30-2	46212H40101H000	49-5
36651-26H00-000	26-24	43142H21302H000	28-7	44256H22500H000	30-5-2	46310H40101H841	49-1

5

PART NO.	FIG. NO. – REF. NO.	PART NO.	FIG. NO. – REF. NO.	PART NO.	FIG. NO. – REF. NO.	PART NO.	FIG. NO. – REF. NO.
46313H40100H000	49-2	51175H40110H000	41-1-5	56500H2A230H000	34-2	59671H2G100H000	44-1-1-4
46314H40100H000	49-3	51175H40110H000	41-2-5	56600H2A230H000	34-3	59675H2A000H000	44-1-1-5
47011H4010AHF01	32-3	51311H40101H000	41-3	57110H40001H000	35-4	59689H2A010H000	44-1-1-3
47011H4010AHF02	32-3	51353H11200H000	41-8	57211H40100H000	35-3		
47011H4010AHF03	32-3	51410H40100H000	41-4	57321-45F20-000	44-1-3		
47012H40100HF01	32-4	51544H2A200H000	37-8	57421H40100H000	44-1-2	60000	
47012H40100HF02	32-4	51589H22500H000	37-11	57431-45C01-000	35-5-5		
47012H40100HF03	32-4	51631-48H00-000	41-10	57433-09F00-000	44-1-4		
47021H40100HF01	32-1	51643H40100H000	41-11	57441H2J000H000	35-5-3		
47021H40100HF02	32-1	53111H40100H135	33-1	57442-45C00-000	35-5-4		
47021H40100HF03	32-1	53111H40100H521	33-1	57460-17C11-000	44-1-5		61041H4010AH000
47022H40100HF01	32-2	53111H40100H913	33-1	57500H2J000H000	35-5	61100H40101H000	46-1
47022H40100HF02	32-2	54111H40100H000	42-1-2	57511H2J000H000	35-5-2	61149H40100H000	47-4
47022H40100HF03	32-2	54441H40110H000	48-20	57560-28G11-000	35-5-8	61211H37200H000	46-4
47312H02100H000	30-13	54443H85300H000	48-24	57621H2J000H000	35-5-1	61262-05300-000	46-6
47312H02100H000	32-7	54492H40100H000	48-23	57661H2C100H000	35-6	61273H40101H000	46-8
47430H40100H000	27-18	54711H40100H000	42-7	58200H40101H000	34-4	61275H40100H000	46-9
47846H40100H000	32-8	54731H40100H000	42-1-5	58300H40010H000	34-5	61282H40101H000	46-5
48291-32GH0-000	32-9	54741H40100H000	42-6	58620H40000H000	34-6	61311H40100H000	47-1
		54742H2J000H000	42-5	58620H40110H000	34-7	61315-45F00-000	47-3
50000		55033H40100H000	42-1	59064H2G11AH000	44-1	61421H40101H000	48-7-1
		55100H40100H000	42-8	59121-26F10-000	43-1-2	62100H40112H000	47-10
		55156-26F10-000	43-1-1	59211H40100H000	42-3	62113H40110H000	47-10-2
		55200H40100H000	42-9	59246H40100H000	45-2	62115H40101H000	47-10-3
		55261H40100H000	42-10	59268H40110H000	45-3	62129H40110H000	47-10-1
51103H40121H000	41-1	55311H40100H000	42-1-1	59300H2JY10H000	43-1-3	62313H40101H000	47-9
51104H40120H000	41-2	55321H40100H000	42-1-4	59300H40100H000	43-1	63111H40100H000	36-1
51153H40100H000	41-1-1	55322H40100H000	42-1-3	59421H40100H000	42-2	63112H40000H000	36-7
51153H40100H000	41-2-1	55326-11200-000	42-1-7	59480H40100H000	45-1	63113H40100H000	36-14
51156-12FH0-000	41-1-2	55326-11200-000	48-1-10	59600H2G110H000	44-1-1	63121H40100H000	36-12
51156-12FH0-000	41-2-2	55421H40100H000	48-19-1	59600H36810H000	44-1-1-6	63125H40000H000	36-18
51173H40100H000	41-1-3	55421H40110H000	48-19-2	59666-44300-000	44-1-1-6-1	64110H40101H000	48-1-2
51173H40100H000	41-2-3	56110H40102H000	34-1	59667-053B0-000	44-1-1-1	64210H40100H000	48-21
51174H40110H000	41-1-6	56211H40101H000	41-5	59669H2A030H000	44-1-1-2	64410H40Y00H000	48-19
51174H40110H000	41-2-6	56321H40101H000	37-5	59671H2G100H000	35-5-10	64451H40100H000	48-22

PART NO.	FIG. NO. – REF. NO.	PART NO.	FIG. NO. – REF. NO.
64511H40100H000	48-10	68225H40120HT89	30-5-4
64613H40100H000	48-8	68226H40120HT87	30-6-4
64711H40100H000	48-14	68226H40120HT88	30-6-4
64712H40100H000	48-4	68226H40120HT89	30-6-4
64731H40100H000	48-1-7	68311H56110H000	27-14
64741H40100H000	48-16	68319H22510H000	38-1
64751H40100H000	48-15	68332H40120H000	38-3
65032H40100H000	48-1	68391H40000H000	38-4
65100H40100H000	48-11		
65200H40100H000	48-12		
65261H40100H000	48-13		
65311H40100H000	48-1-1	90000	
65321H40100H000	48-1-4		
65322H40100H000	48-1-3		
65327H40100H000	48-1-6		
65328H40100H000	48-1-5		
68125H40130HT87	30-5-5	92125-33GC0-000	25-2
68125H40130HT89	30-5-5	92125-33GC0-000	30-10
68126H40130HT87	30-6-5	92125-33GC0-000	32-5
68126H40130HT89	30-6-5	92125-33GC0-000	40-3
68132H40120HT87	32-3-1	94411H40100H000	37-3
68132H40120HT88	32-3-1	94414H40100H521	37-1
68132H40120HT89	32-3-1	95700H05310H000	27-21
68142H40120HT87	32-1-1	95729-053G0-000	27-22
68142H40120HT88	32-1-1	99011H40002H000	38-2
68142H40120HT89	32-1-1		
68165H40120HT87	32-4-1		
68165H40120HT88	32-4-1		
68165H40120HT89	32-4-1		
68167H40120HT87	32-2-1		
68167H40120HT88	32-2-1		
68167H40120HT89	32-2-1		
68170H40110HT87	37-14		
68225H40120HT87	30-5-4		
68225H40120HT88	30-5-4		

Haojue NK150 PARTS CATALOGUE

1st Edition

Published in 2020.12

DACHANGJIANG GROUP CO.,LTD.

No.5, Jiandabei Rd., Jiangmen City, Guangdong Province, P.R.China

Tel: 86-750-3288999 Fax: 86-750-3230989 Code: 529000

DACHANGJIANG GROUP COPYRIGHT POSSESSION.

DACHANGJIANG GROUP CO. , LTD.